

RBC PROPRIETARY AND CONFIDENTIAL INFORMATION
 This document is the property of REGAL-BELOIT CORPORATION ("RBC") including its subsidiaries and divisions and contains proprietary information of RBC. This document is loaned on the express condition that neither it nor the information contained there in shall be disclosed to others without the express written consent of RBC and that the information shall be used by the recipient only as approved expressly by RBC. This document shall be returned to RBC upon its request. This document may be subject to certain restrictions under the U.S. export control laws and regulations.

STOCK
 Uncontrolled Copy

REV. DESCRIPTION

REVISE PER T.E. 95-24/39-63, 10-95
 2 Modified as per CR #05-1777 SN 09/06/2009
 "C" MAX.

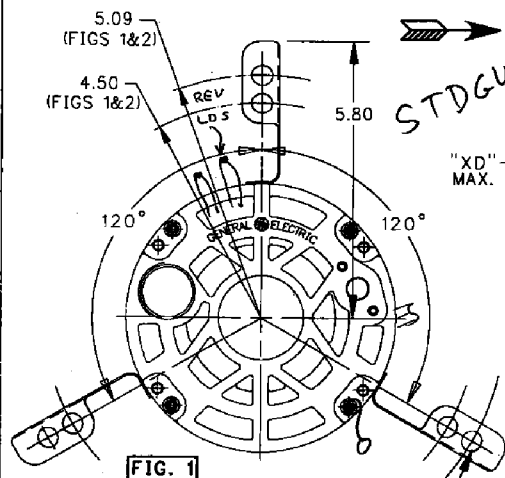


FIG. 1

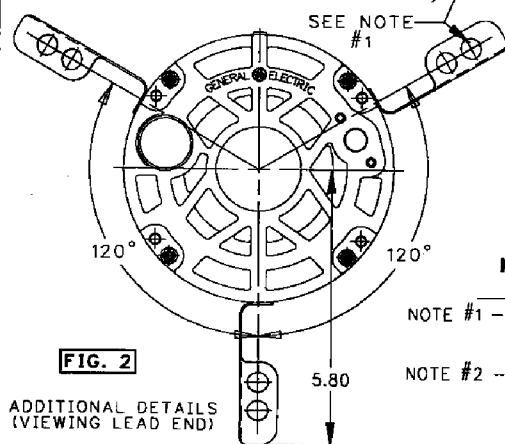
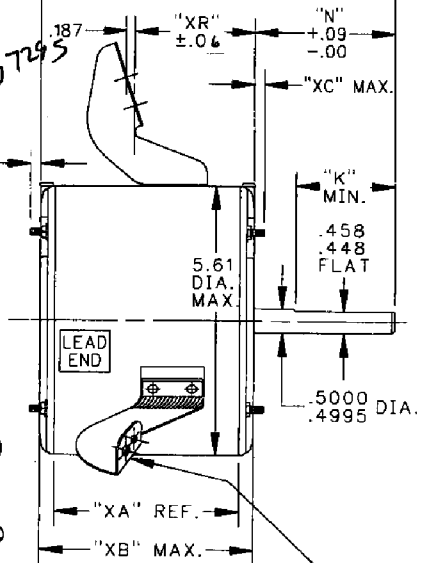


FIG. 2

ADDITIONAL DETAILS
 (VIEWING LEAD END)



LUGS FOR 9/10" BLOWER WHEEL.
 GROMMETS IN 9"

HOLES IN LUGS ARE
 FOR .25 DIA. SCREW.

MAX. VARIATION BETWEEN ALL LUG
 MOUNTING SURFACES IS .040"

NOTE #1 - THE THREE LUGS SHOULD FIT A CONICAL GAGE
 PLATE WITH THREE PINS .25 DIAMETER LOCATED
 ON THE BASIC POSITIONS.

NOTE #2 - ROTATION AND LEAD LOCATION IN DEGREES FROM
 TOP OF MOTOR ARE GIVEN AS VIEWED IN THE
 DIRECTION OF ARROW.

9.80	5.0	4.5	4.07	4.73	.14	-	3.0	1
"C"	"N"	"K"	"XA"	"XB"	"XC"	"XD"	"XR"	LUG FIG.

ROTATION ~~SCW~~VIEWED IN DIRECTION OF ARROW.
 VENTILATION SYSTEM
 SHELL - OPEN
 OPPOSITE LEAD END SHIELD - OPEN
 LEAD END SHIELD - OPEN
 LEADS EXIT THRU SHELL - DEGREES FROM
 TOP OF MOTOR VIEWED IN DIRECTION OF ARROW.



REGAL-BELOIT CORPORATION
 FORT WAYNE, INDIANA

MOTOR OUTLINE

MODEL	ISSUED	SCALE
SKCP39JGP7335	cm 6-19-90	.4

CAD. NO. F39-OLM56