

NON-PROPRIETARY AND CONCEPTUAL INFORMATION
 This document is the property of REGAL-BELOIT CORPORATION ("RBC") including its subsidiaries and divisions and contains proprietary information of RBC. The document is loaned on the express condition that neither it nor the information contained therein shall be disclosed to others without the express written consent of RBC and the information shall be used by the recipient only as approved explicitly in writing. The document shall be returned to RBC upon its request. This document and its contents are under the U.S. export control laws and regulations.

Uncontrolled Copy

REVISIONS

REV	DESCRIPTION
1	JAR 7/29/93 T19329/39 65
2	CSH/MLC FLEC FORMAT

MODIFIED THE FORMAT PER CR#05-1777 RB 09/14/05

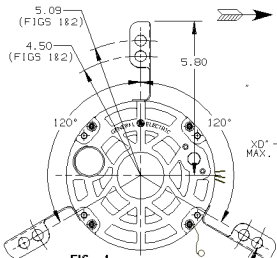


FIG. 1

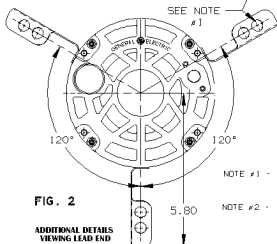
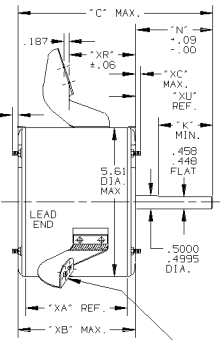


FIG. 2

ADDITIONAL DETAILS
 VIEWING LEAD END



LUGS FOR 9/10" BLOWER WHEEL
 GROMMETS IN 9" HOLES IN LUGS ARE FOR .25 DIA SCREW

MAX VARIATION BETWEEN ALL LUG
 MOUNTING SURFACES IS .040"

- NOTE #1 - THE THREE LUGS SHOULD FIT A CONICAL GAGE PLATE WITH THREE PINS .25 DIAMETER LOCATED ON THE BASIC POSITIONS
- NOTE #2 - ROTATION AND LEAD LOCATION IN DEGREES FROM TOP OF MOTOR ARE GIVEN AS VIEWED IN THE DIRECTION OF ARROW.

9.30	5.00	4.50	3.57	4.23	14		3.00	1
"C"	"N"	"K"	"XA"	"XB"	"XC"	"XD"	"XR"	LUG FIG.

ROTATION CW VIEWED IN DIRECTION OF ARROW.
 VENTILATION SYSTEM
 SHELL - OPEN
 OPPOSITE LEAD END SHIELD - OPEN
 LEAD END SHIELD - OPEN
 LEADS EXIT THRU SHELL 90 DEGREES FROM TOP OF MOTOR VIEWED IN DIRECTION OF ARROW



REGAL-BELOIT CORPORATION
 FORT WAYNE, INDIANA

MOTOR OUTLINE

MODEL	ISSUED	SCALE
5KCP39FGP731S	CAS 6/19/90	4