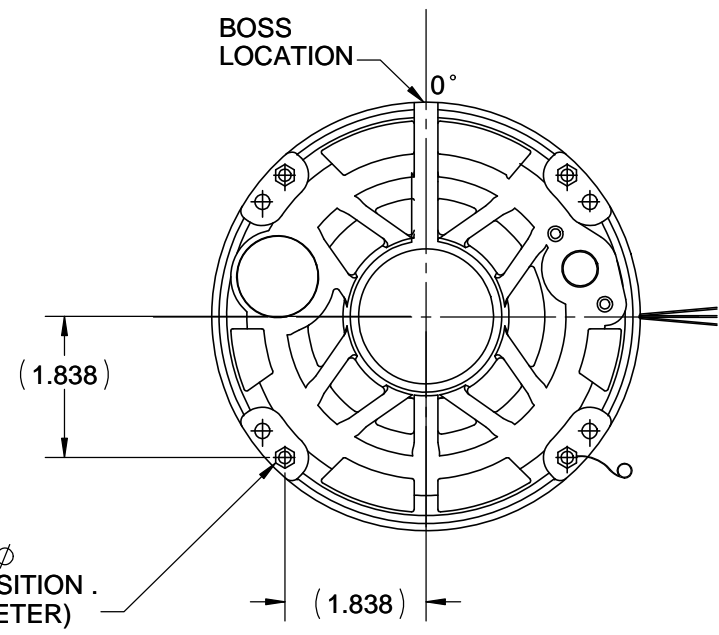
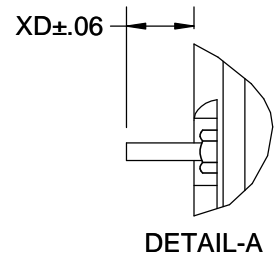
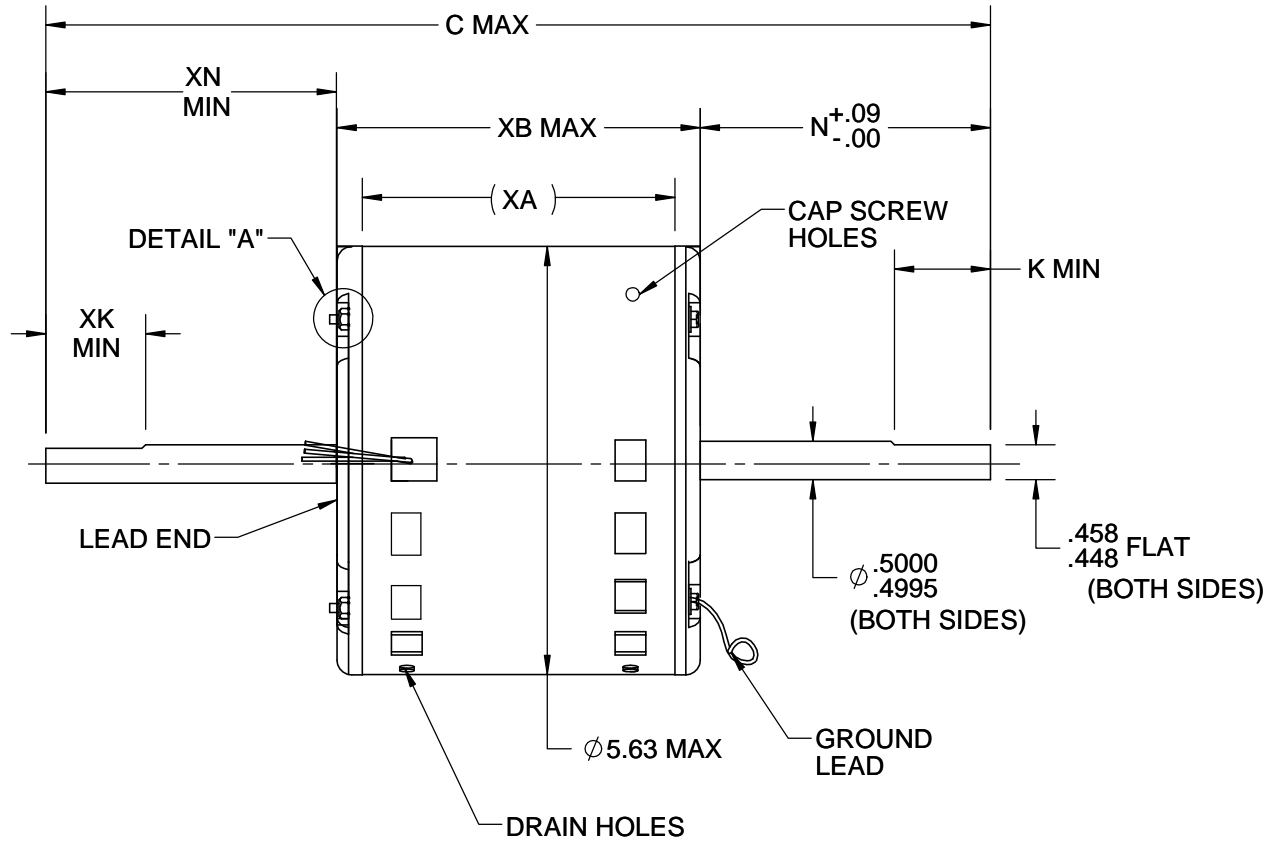


S.NO	CONNECTION	COLOR	EXIT TYPE	EXIT LOC (VIEWING LE)	GAGE	MATERIAL	WALL THK.	LENGTH	TERMINATION
1	COMMON LEAD	YELLOW	SHELL NOTCH	3:00	18	THERMOPLASTIC	4/64	14.00	0.5 BWS
2	CAPACITOR LEAD	BROWN	SHELL NOTCH	3:00	18	THERMOPLASTIC	4/64	14.00	0.5 BWS
3	HIGH SPEED LEAD	BLACK	SHELL NOTCH	3:00	18	THERMOPLASTIC	4/64	14.00	0.5 BWS
4	MED SPEED LEAD	BLUE	SHELL NOTCH	3:00	18	THERMOPLASTIC	4/64	14.00	0.5 BWS
5	LOW SPEED LEAD	RED	SHELL NOTCH	3:00	18	THERMOPLASTIC	4/64	14.00	0.5 BWS
6	GROUND LEAD	GRN/YEL	CLAMP SCREW	7:30 (VIEW PE)	18	THERMOPLASTIC	2/64	12.00	#10 EYELET

NAMEPLATE DATA	
MODEL	5KCP39JGA406ET
CUST. P/N	STOCK NO 3686
HP	1/3
RPM	1075
VOLTS	208-230
HZ	60/50
SPEEDS	3
AMPS	2.50
CAP. REQ'D-D1	5.0 µfd/370 Volts
CAP. REQ'D-D2	N/R
CONN.DRW#	NP251488
ROTATION	CCW (VIEWED FROM LE)



#8-32 THREAD.
THESE SCREWS FIT A
GAGE HAVING (4) HOLES OF ϕ
.1910 LOCATED ON BASIC POSITION.
(5.20 REF BOLT CIRCLE DIAMETER)



NOTE:
1) DIMENSIONS SHOWN ARE NOMINAL UNLESS OTHERWISE SPECIFIED.
2) NAME PLATE LABEL LOCATION : 360° - CENTER - READ FROM LE.

VENTILATION SYSTEM	
SHELL VENTS	OPEN 90-270 DEG (BOT)
ENDSHIELD (OPP.LEAD END)	OPEN
ENDSHIELD (LEAD END)	OPEN

DRAWING REVISION A	REVISION BY KEP	DATE 05/08/2017
ECO ECO-0123179	APPROVED BY ANDREA NELSON	DATE 05/08/2017
ECO DESCRIPTION INITIAL RELEASE TO IDS AS PER ECO		
<small>COPYRIGHT REGAL BELOIT AMERICA, INC. ALL RIGHTS RESERVED. PROPRIETARY AND CONFIDENTIAL INFORMATION - THIS DOCUMENT IS THE PROPERTY OF REGAL BELOIT AMERICA, INC. ("OWNER") AND CONTAINS OWNER'S PROPRIETARY INFORMATION. ANY PERSON, CORPORATION OR OTHER FIRM RECEIVING IT IS DEEMED, BY RECEIVING IT, TO AGREE THAT IT, AND/OR ANY PART OF IT, SHALL NOT BE DISCLOSED TO ANY PERSON, CORPORATION OR OTHER ENTITY, DUPLICATED, AND/OR USED, EXCEPT AS EXPRESSLY APPROVED IN WRITING IN ADVANCE BY OWNER. THIS DOCUMENT SHALL BE RETURNED TO OWNER UPON REQUEST. IT MAY BE SUBJECT TO CERTAIN RESTRICTIONS UNDER APPLICABLE EXPORT CONTROL LAWS AND REGULATIONS.</small>		

TOLERANCES UNLESS OTHERWISE SPECIFIED:			
DEC.	INCH	mm	ANGLE
.X	±0.1	[±2.5]	±7° 30"
.XX	±0.03	[±0.76]	
.XXX	±0.005	[±0.127]	
.XXXX	±0.0005	[±0.0127]	
REMOVE BURRS & BREAK SHARP EDGES: .003/.015 [.076/.381] CORNER FILLETS: .02 [.51] MACHINED SURFACES: 200 INCH / 5.1 mm			
mm SHOWN IN [BRACKETS]			

DRAWN BY KEP
DATE 05/08/2017
APPROVED BY ANDREA NELSON
DATE 05/08/2017
REFERENCE
THIRD ANGLE PROJECTION

REGAL ™ Regal Beloit America, Inc.	
DESCRIPTION OUTLINE (CUST NAME: DEF PUR)	
MATERIAL	PROCESS/FINISH
SIZE B	DRAWING NUMBER 5KCP39JGA406ET
	SHEET 1 OF 1

20.00	7.75	7.35	7.45	7.05	N/R	N/R	1.50
C	N	K	XN	XK	LM	XA	XB
						4.07	4.73
						XC	XD

4

3

Uncontrolled Copy

2

1

B

B

A

A

4

3

2

1