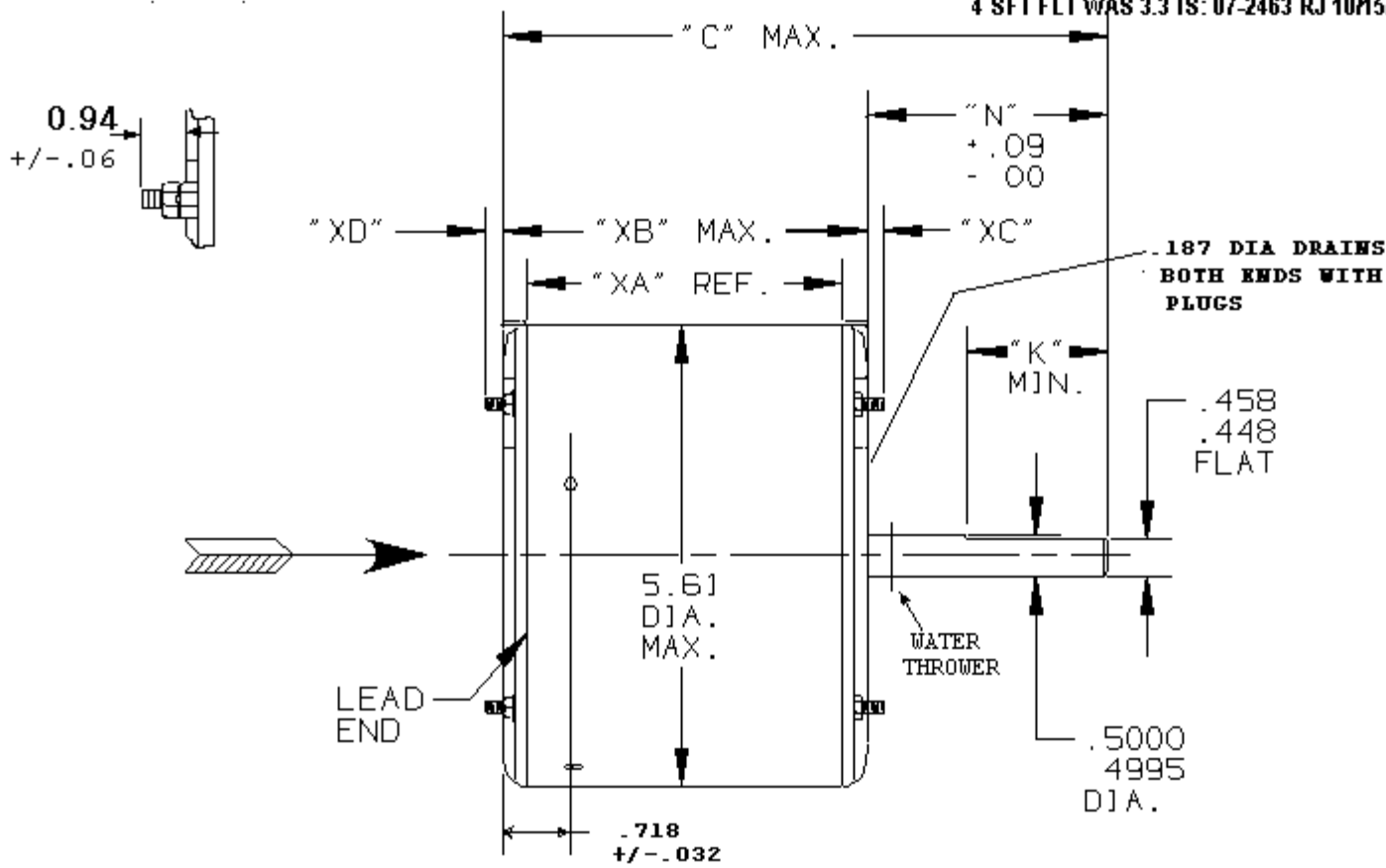


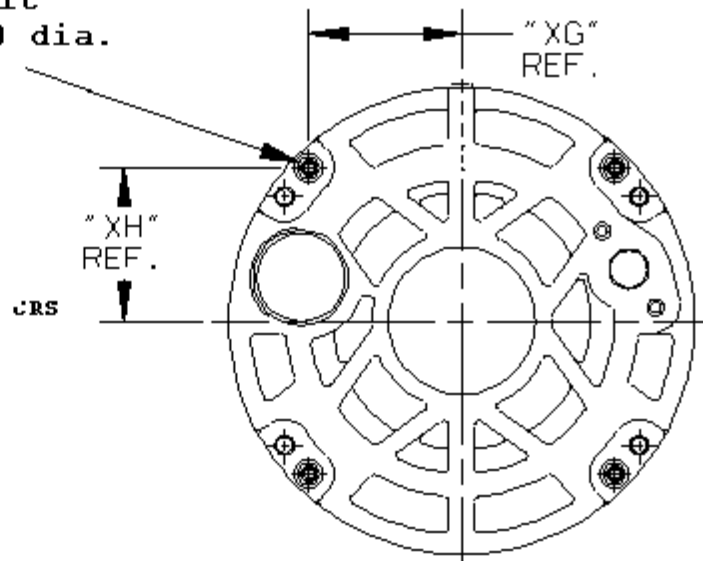
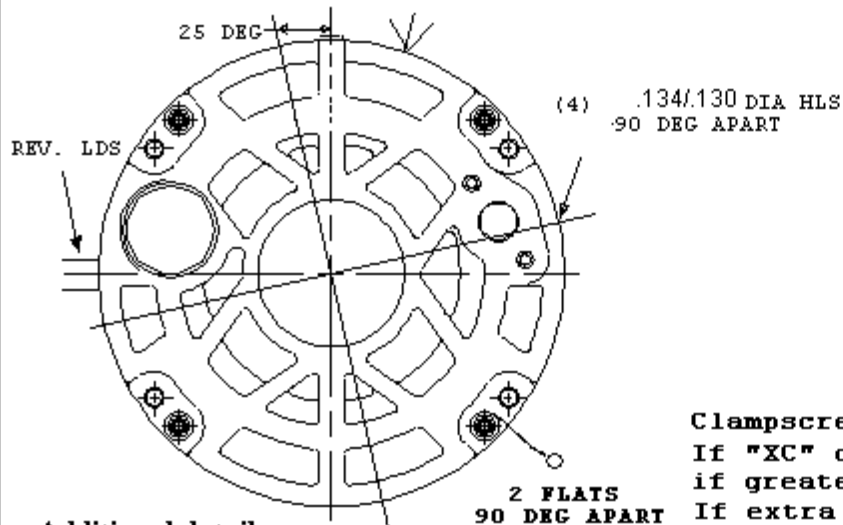
RBC PROPRIETARY AND CONFIDENTIAL INFORMATION
 This document is the property of REGAL-BELOIT CORPORATION ("RBC") including its subsidiaries and divisions and contains proprietary information of RBC. This document is loaned on the express condition that neither it nor the information contained there in shall be disclosed to others without the express written consent of RBC and that the information shall be used by the recipient only as approved expressly by RBC. This document shall be returned to RBC upon its request. This document may be subject to certain restrictions under the U.S. export control laws and regulations.

REVISIONS	
REV	DESCRIPTION
1	SHAFT EXT. TO 5" AND SUFFIX "AS" AS PER IS 04-0974
2	LOGO MODIFIED IS:05-1777
3	AS PER ISAAC 05-0369 RB 12/21/05
4	SFT FLT WAS 3.3 IS: 07-2463 RJ 10M5M7

STOCK



#8-32 thread-These screws fit a gage having (4) holes .1910 dia. located on basic position



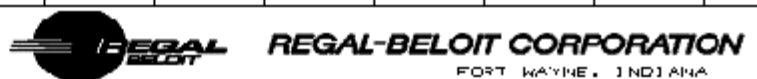
Clampscrew position when "XC" or "XD" exceed .14". If "XC" or "XD" = .14 it is a max. dimension, but if greater than .14, value given is -.00/+.14. If extra nuts are furnished for spacing, dimension is from nut next to endshield.

9.80	5.00	4.50		4.07	4.73	.50 .48	SEE ABOVE	1.838	1.838
"C"	"N"	"K"		"XA"	"XB"	"XC"	"XD"	"XG"	"XH"

Rotation CCW/CW viewed in direction of arrow.

Ventilation System:

- Shell vents - CLOSED
- End shield (opp. lead end) - CLOSED
- End shield (lead end) - CLOSED
- Leads exit thru SHELL 20 degrees CW from top of motor viewed in direction of arrow.



MOTOR OUTLINE

MODEL	ISSUED	SCALE
5KCP39KGU361AS	AM 12/12/01	NO

MODEL

CAD. NO. FF1NR4

CAD. NO. FF1NR4