

RBC PROPRIETARY AND CONFIDENTIAL INFORMATION
 This document is the property of REGAL-BELOIT CORPORATION ("RBC") including its subsidiaries and divisions and contains proprietary information of RBC. This document is loaned on the express condition that neither the information contained there in shall be disclosed to others without the express written consent of RBC and that the information shall be used by the recipient only as approved expressly by RBC. This document shall be returned to RBC upon its request. This document may be subject to certain restrictions under the U.S. export control laws and regulations.

STOCK 3144

REVISIONS	
REV	DESCRIPTION
1	CAS 12/30/97 REISSUED
2	MODIFIED THE FORMAT PER CR#05-1777 RB 09/22/05 "C" MAX.

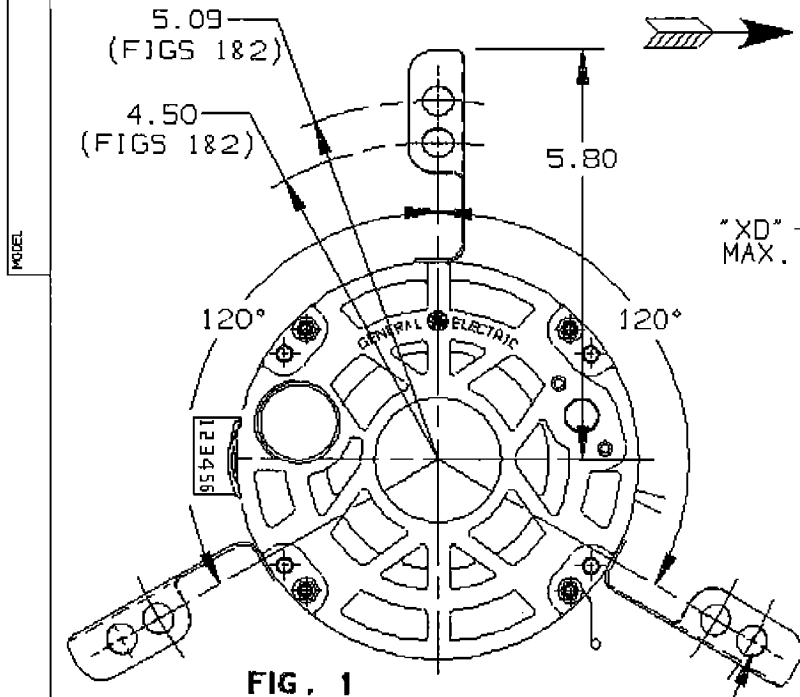


FIG. 1

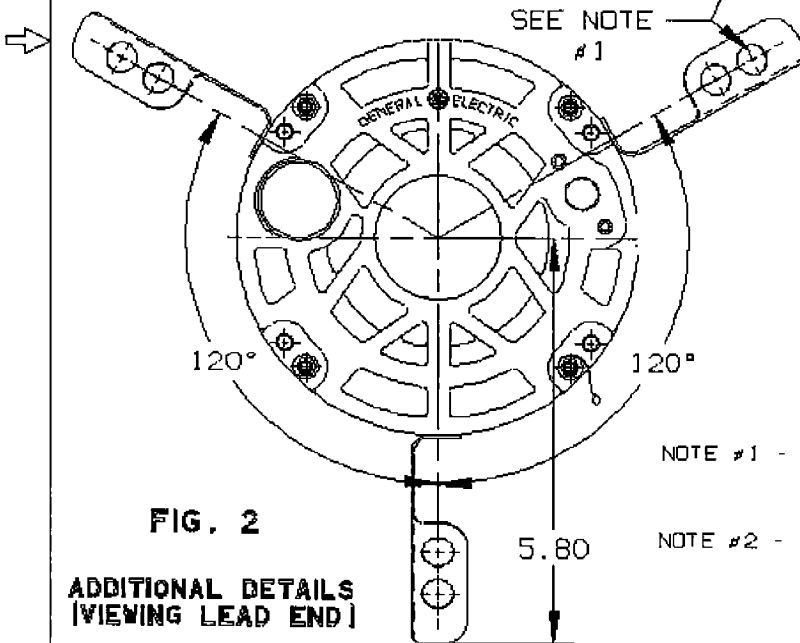
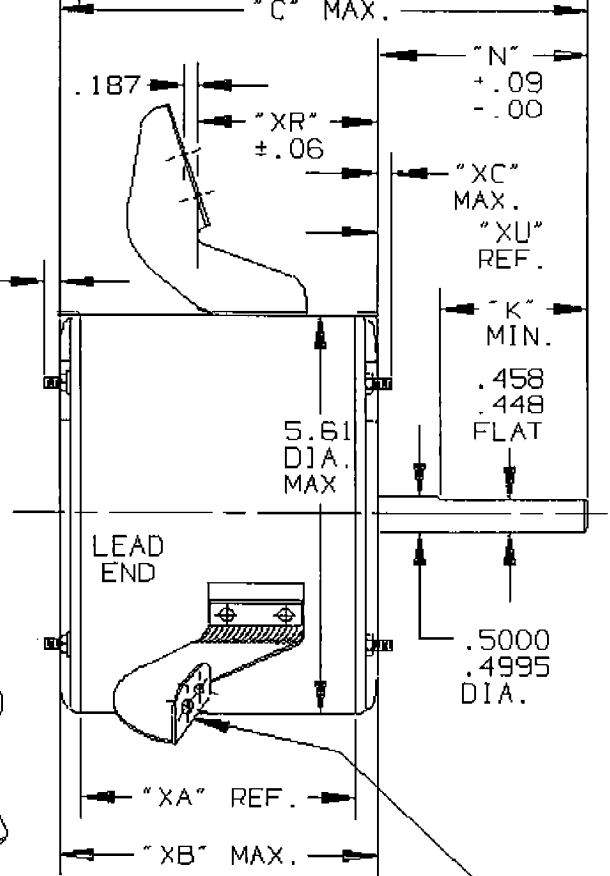


FIG. 2

ADDITIONAL DETAILS
 (VIEWING LEAD END)



LUGS FOR 9/10" BLOWER WHEEL.
 GROM IN 10"
 HOLES IN LUGS ARE FOR .25 DIA. SCREW.

MAX. VARIATION BETWEEN ALL LUG MOUNTING SURFACES IS .040"

NOTE #1 - THE THREE LUGS SHOULD FIT A CONICAL GAGE PLATE WITH THREE PINS .25 DIAMETER LOCATED ON THE BASIC POSITIONS

NOTE #2 - ROTATION AND LEAD LOCATION IN DEGREES FROM TOP OF MOTOR ARE GIVEN AS VIEWED IN THE DIRECTION OF ARROW.

8.30	4.00	3.50		3.57	4.23	.14	-		3.03	1
"C"	"N"	"K"		"XA"	"XB"	"XC"	"XD"		"XR"	LUG FIG.

ROTATION CCW VIEWED IN DIRECTION OF ARROW.
 VENTILATION SYSTEM
 SHELL - OPEN
 OPPOSITE LEAD END SHIELD - OPEN
 LEAD END SHIELD - OPEN
 LEADS EXIT THRU SHELL 270 DEGREES FROM TOP OF MOTOR VIEWED IN DIRECTION OF ARROW

FF1T



REGAL-BELOIT CORPORATION
 FORT WAYNE, INDIANA

MOTOR OUTLINE

MODEL	ISSUED	SCALE
5KCP39HGT584 S	CAS 11/5/97	4