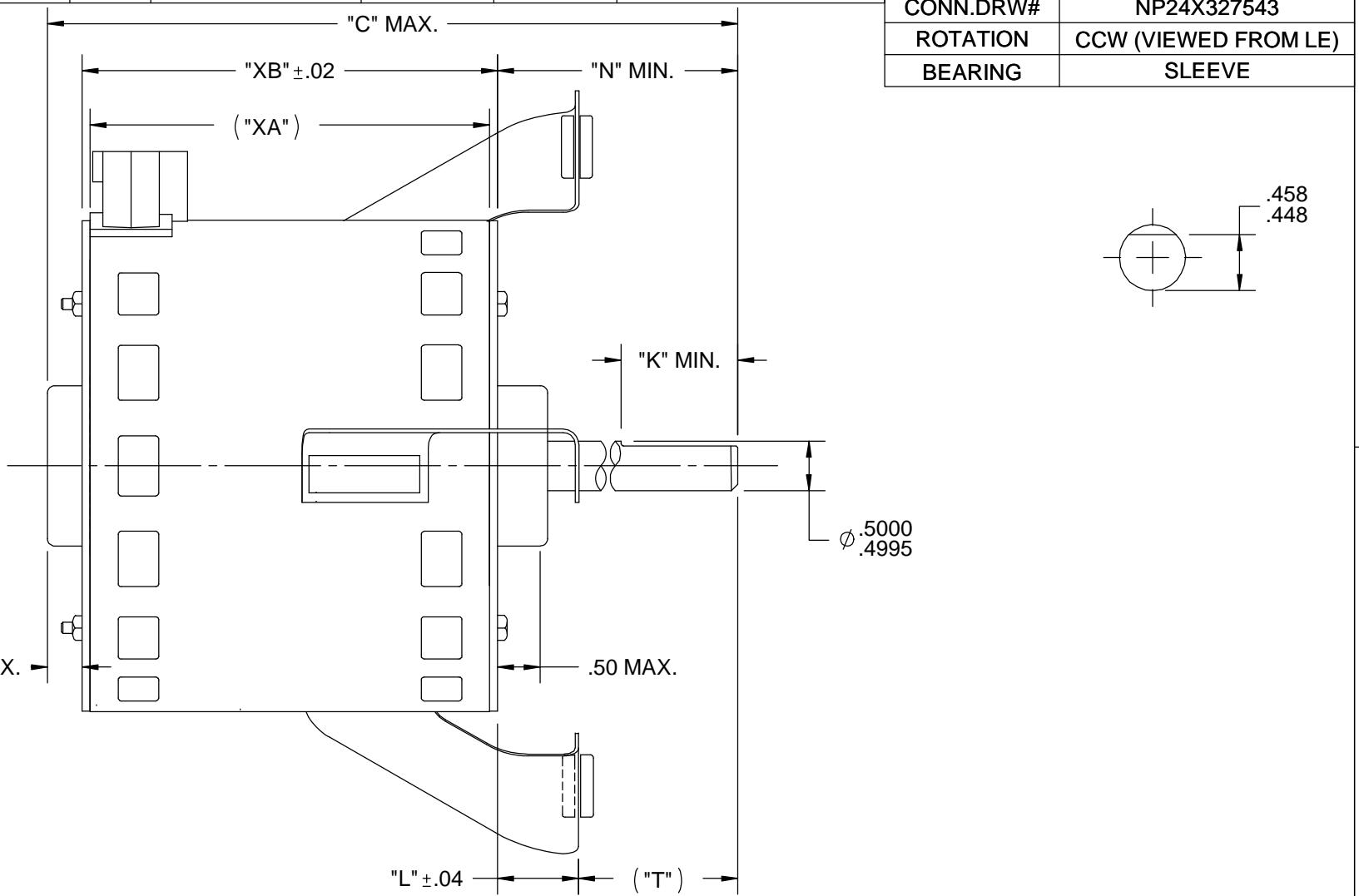
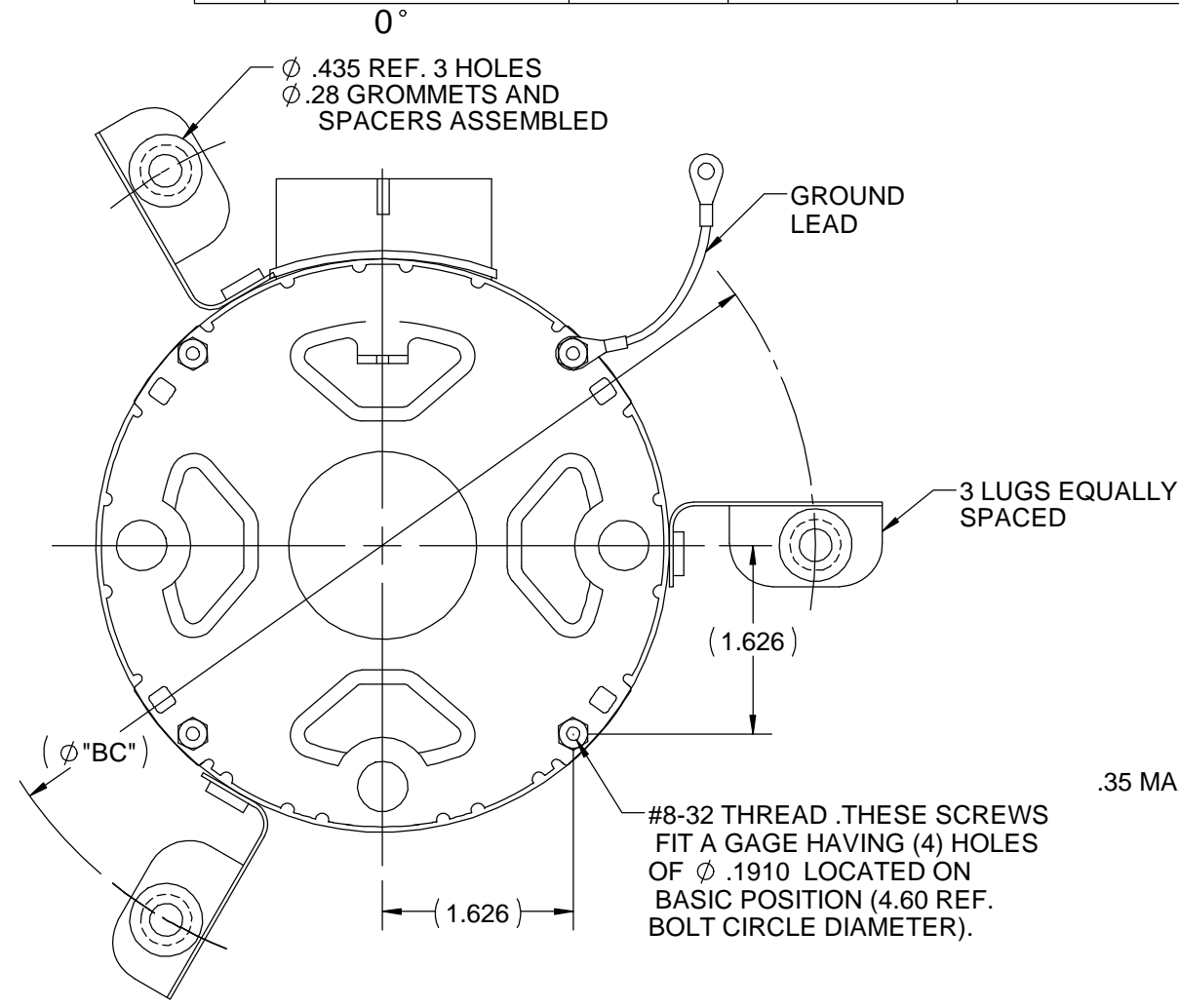


S.NO	CONNECTION	COLOR	EXIT TYPE	EXIT LOC (VIEWING LE)	GAGE	MATERIAL	WALL THK.	LENGTH	TERMINATION
1	COMMON LEAD	YELLOW	TERM BLOCK	12:00	18	EPDM	2/64	N/R	N/R
2	CAPACITOR LEAD	BROWN	TERM BLOCK	12:00	18	EPDM	2/64	N/R	N/R
3	HIGH SPEED LEAD	BLACK	TERM BLOCK	12:00	18	EPDM	2/64	N/R	N/R
4	MED SPEED LEAD	BLUE	TERM BLOCK	12:00	18	EPDM	2/64	N/R	N/R
5	LOW SPEED LEAD	RED	TERM BLOCK	12:00	18	EPDM	2/64	N/R	N/R
6	GROUND LEAD	GRN/YEL	CLAMP SCREW	10:30 (1:30 VIEW OPE)	18	THERMOPLASTIC	2/64	6.00	#10 RING

NAMEPLATE DATA	
MODEL	5KCP29FK8997S
CUST. P/N	2S002
HP	1/20
RPM	1075
VOLTS	115
HZ	60
SPEEDS	3
AMPS	1.25
CAP. REQ'D-D1	5 µfd/370 Volts
CAP. REQ'D-D2	N/R
CONN.DRW#	NP24X327543
ROTATION	CCW (VIEWED FROM LE)
BEARING	SLEEVE



11.04	6.50	3.00	3.405	3.56	1.00	6.00	7.766
"C"	"N"	"K"	"XA"	"XB"	"L"	"T"	"BC"

NOTE:
1) DIMENSIONS SHOWN ARE NOMINAL UNLESS OTHERWISE SPECIFIED.
2) NAME PLATE LABEL LOCATION : 225° - CENTER - READ FROM LE.

VENTILATION SYSTEM	
SHELL VENTS	OPEN
ENDSHIELD (OPP.LEAD END)	OPEN
ENDSHIELD (LEAD END)	OPEN

DRAWING REVISION C	REVISION BY J. RUPERT	DATE 08-10-2018
ECO ECO-0150583	APPROVED BY J. RUPERT	DATE 08-10-2018
ECO DESCRIPTION REDRAWN IN SOLIDWORKS		
<small>COPYRIGHT REGAL BELOIT AMERICA, INC. ALL RIGHTS RESERVED. PROPRIETARY AND CONFIDENTIAL INFORMATION - THIS DOCUMENT IS THE PROPERTY OF REGAL BELOIT AMERICA, INC. ("OWNER") AND CONTAINS OWNER'S PROPRIETARY INFORMATION. ANY PERSON, CORPORATION OR OTHER FIRM RECEIVING IT IS DEEMED, BY RECEIVING IT, TO AGREE THAT IT, AND/OR ANY PART OF IT, SHALL NOT BE DISCLOSED TO ANY PERSON, CORPORATION OR OTHER ENTITY, DUPLICATED, AND/OR USED, EXCEPT AS EXPRESSLY APPROVED IN WRITING IN ADVANCE BY OWNER. THIS DOCUMENT SHALL BE RETURNED TO OWNER UPON REQUEST. IT MAY BE SUBJECT TO CERTAIN RESTRICTIONS UNDER APPLICABLE EXPORT CONTROL LAWS AND REGULATIONS.</small>		

DRAWN BY G. SHONK	REGAL ™ Regal Beloit America, Inc.
DATE 08-11-2008	
APPROVED BY	DESCRIPTION OUTLINE CUSTOMER - DEF PUR
DATE	MATERIAL
REFERENCE	PROCESS/FINISH
THIRD ANGLE PROJECTION	SIZE B
	DRAWING NUMBER 5KCP29FK8997S
	SHEET 1 OF 1