

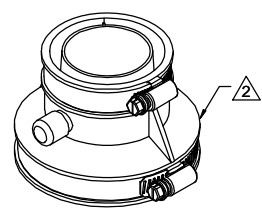
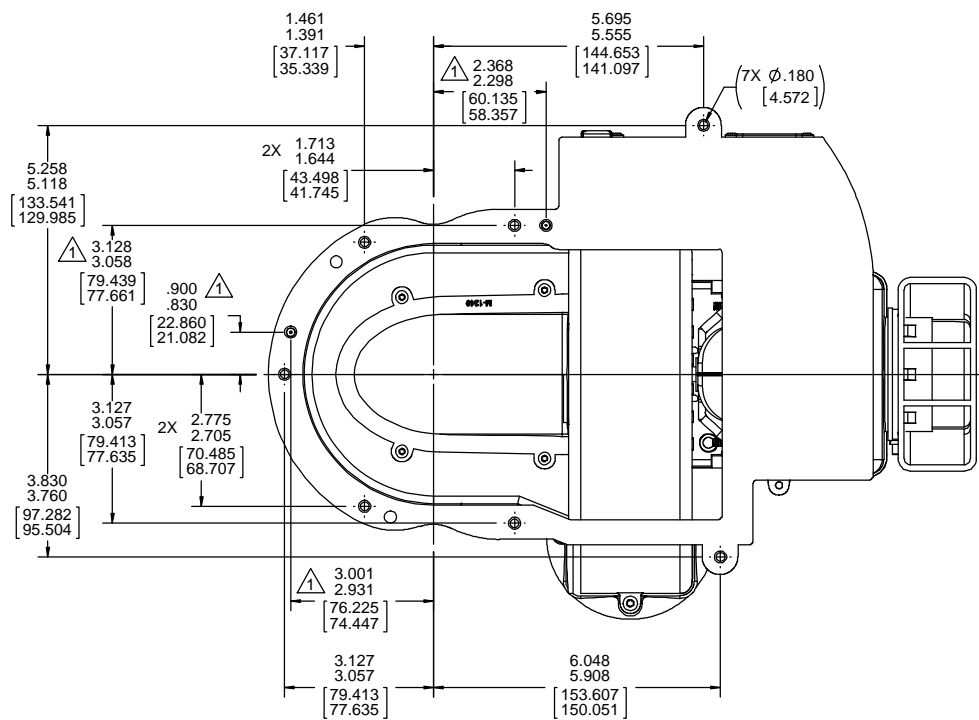
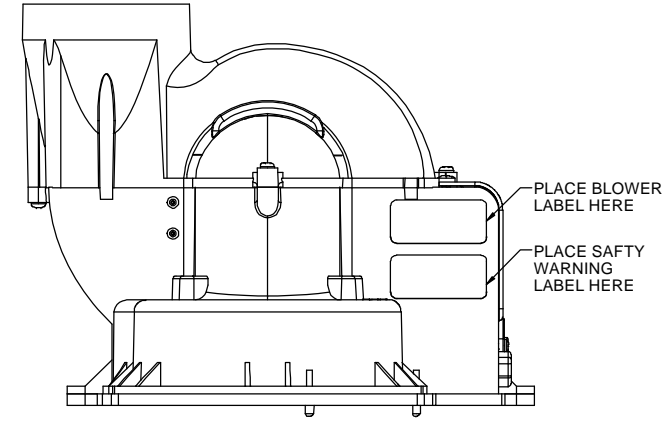
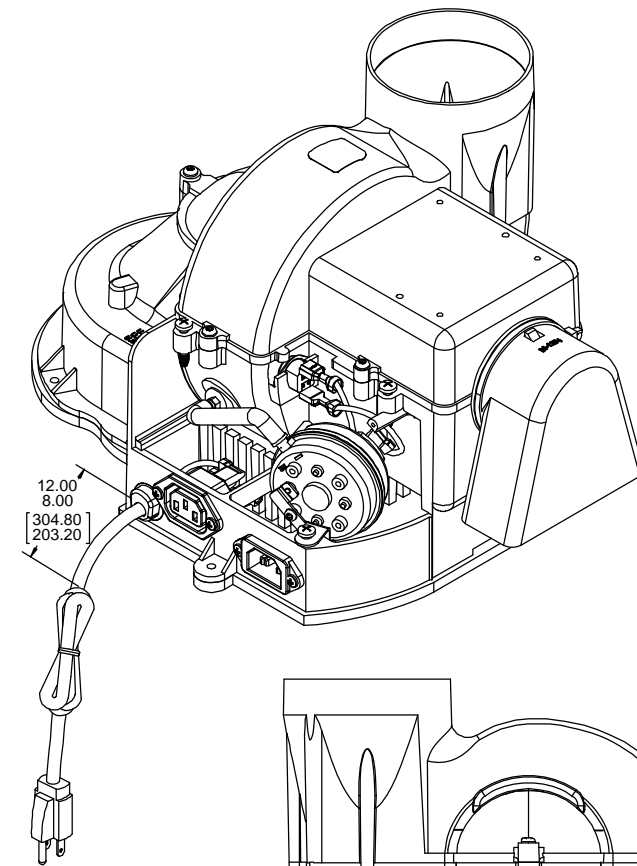
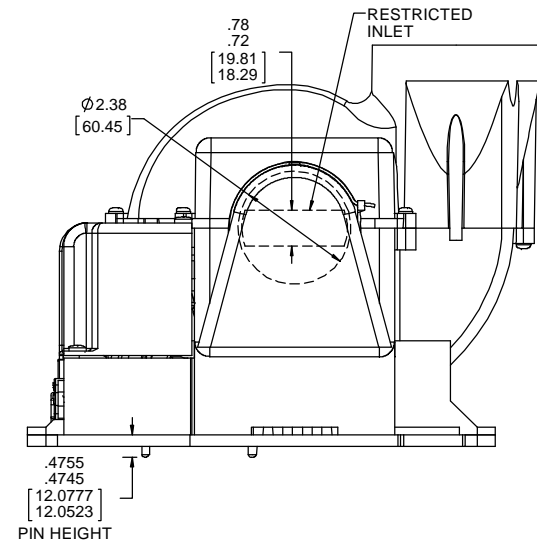
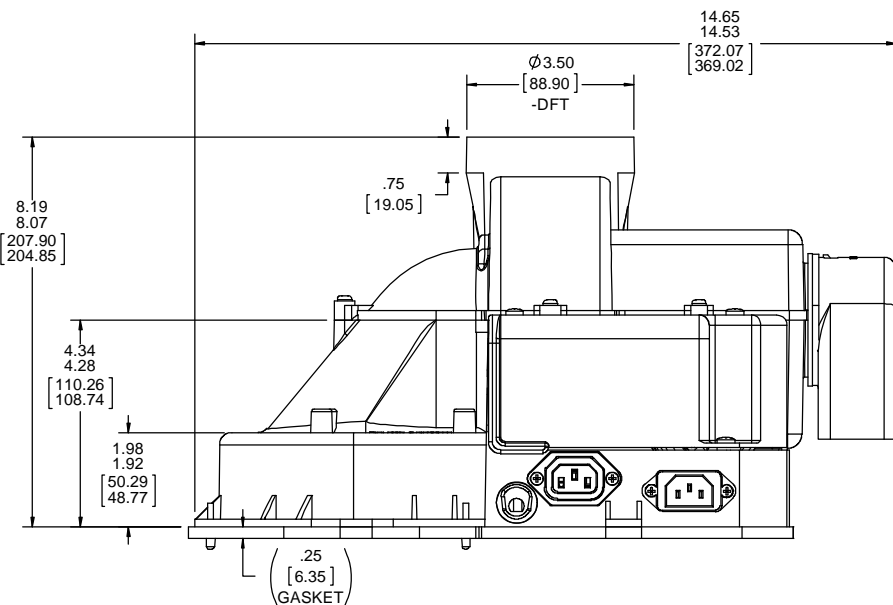
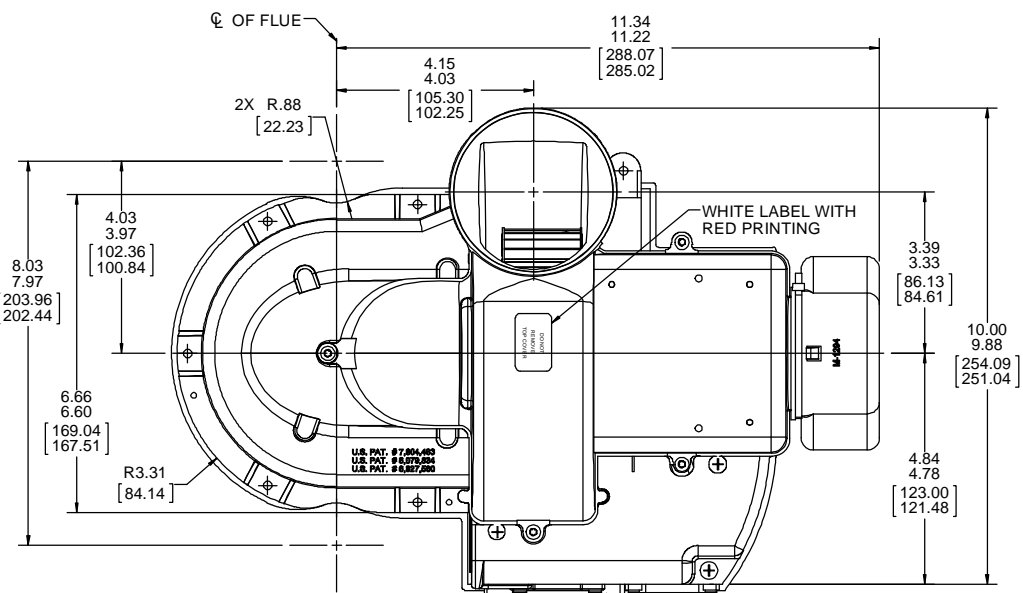
THERMALLY PROTECTED
CLASS "B" INSULATION
SEALED BALL BEARING
416 SS SHAFT

APPLICATION:	DIST.	B	LA	FR	A	S	C	E	B	A
CUSTOMER:	FASCO DIST.	PW	21	01	X	06	AO	5	0	0
CUSTOMER PN:	W11									

- NOTES:
- LOCATING PIN DIMENSION.
 - ADAPTER KIT FOR THIS ASSEMBLY IS 87254052. THIS KIT TO BE PLACED IN CONTAINER WITH BLOWER DURING PACKING.
 - PACK 1 PER CONTAINER, 6 PER LAYER, 2 LAYERS PER PALLET, 12 MAX. PER PALLET, PACKING ASSY. 87855331, PER 88834200.
 - CARTON LABELS MUST ALL FACE ONE DIRECTION TOWARD THE OPEN END OF THE PALLET. SEE 88834408.
 - NO PACKAGING TAPE OVER CARTON LABEL.
 - BLOWER - BLACK, MOTOR - NATURAL

CORDSET MATERIAL
18 GA. 105°C 3-COND.
SJT OR SJTOW. BLACK JACKET
WHITE, BLACK, AND GREEN
OR GRN/YEL
121.00/119.00 [3073.40/3022.60]

MOTOR LEAD MATERIAL
18 GA. 125°C 2/64 INSUL.
BLUE AND WHITE
.34/.28 [8.64/7.11] STRIP
GROUND LEAD MTERIAL
GREEN OR GRN/YEL
.44/.32 [11.18/8.13] STRIP



PERFORMANCE TEST DATA
TEST BLOWER PER F.O.T. 63004444
AT 120 VOLTS 60 Hz

	RPM	WATTS	AMPS
BLOWER WEIGHT			
ENDPLAY			

6.5 LBS. .XX/XX

61305568

SAFETY WARNING
This motor must be grounded in accordance with local or national electrical codes to prevent possible injury due to electrical shock

AVERTISSEMENT DE SECURITE
Ce moteur doit être fondée sur conformément à la réglementation locale ou national électrique codes pour prévenir d'éventuelles blessures en raison de choc électrique

00464316 DATE CODE

702112654 TIME CODE

120 V 60 Hz 3.1 FLA TESTER CODE

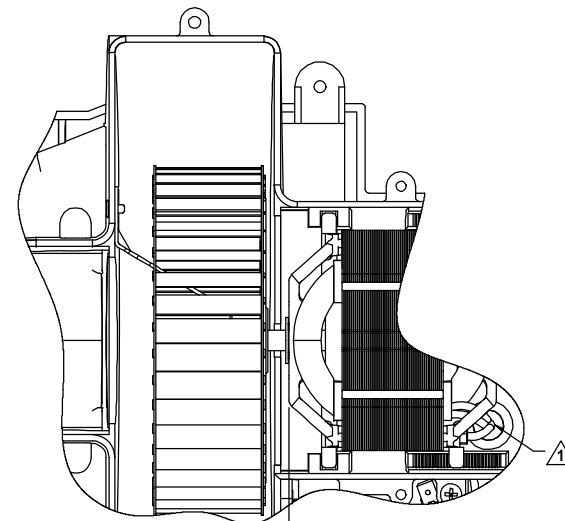
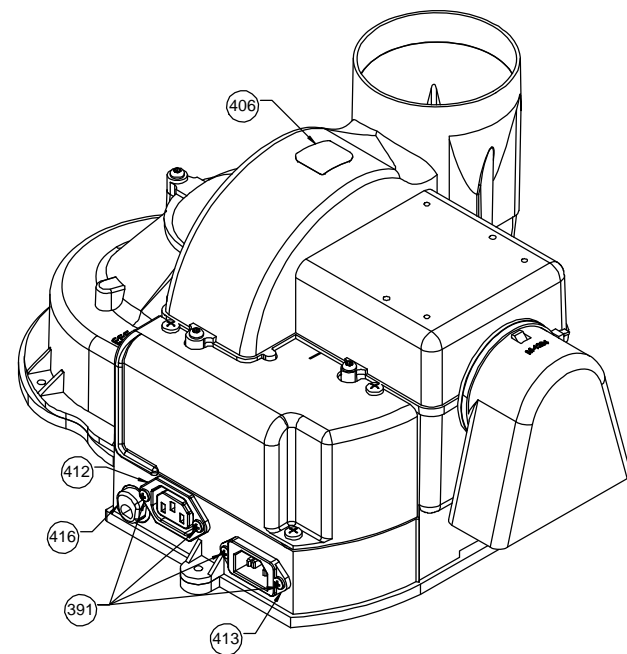
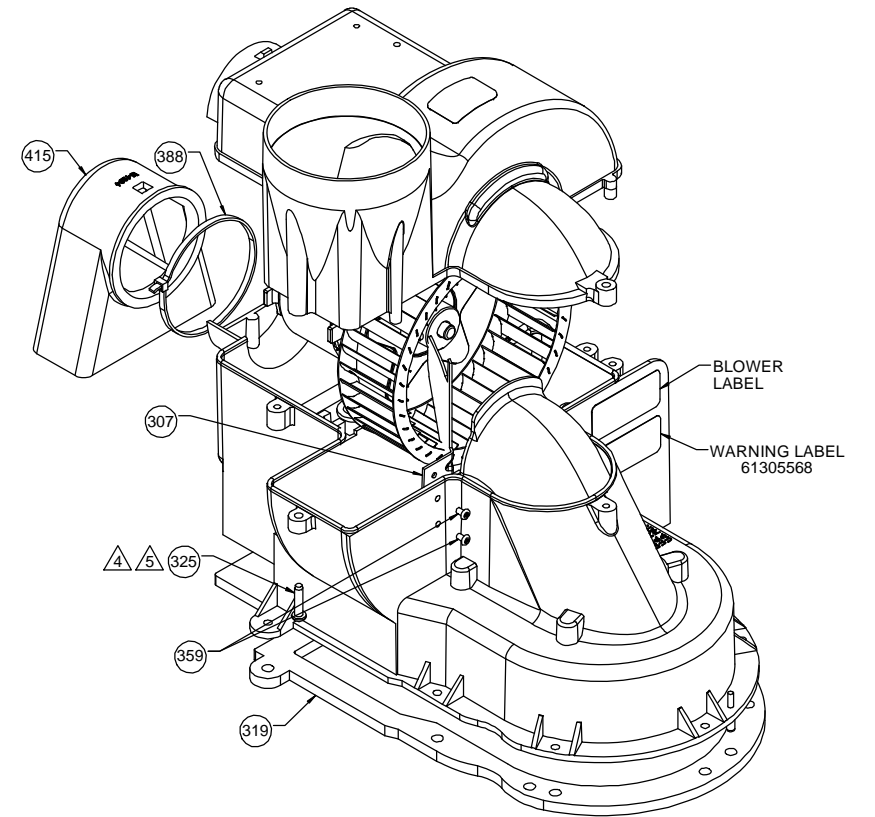
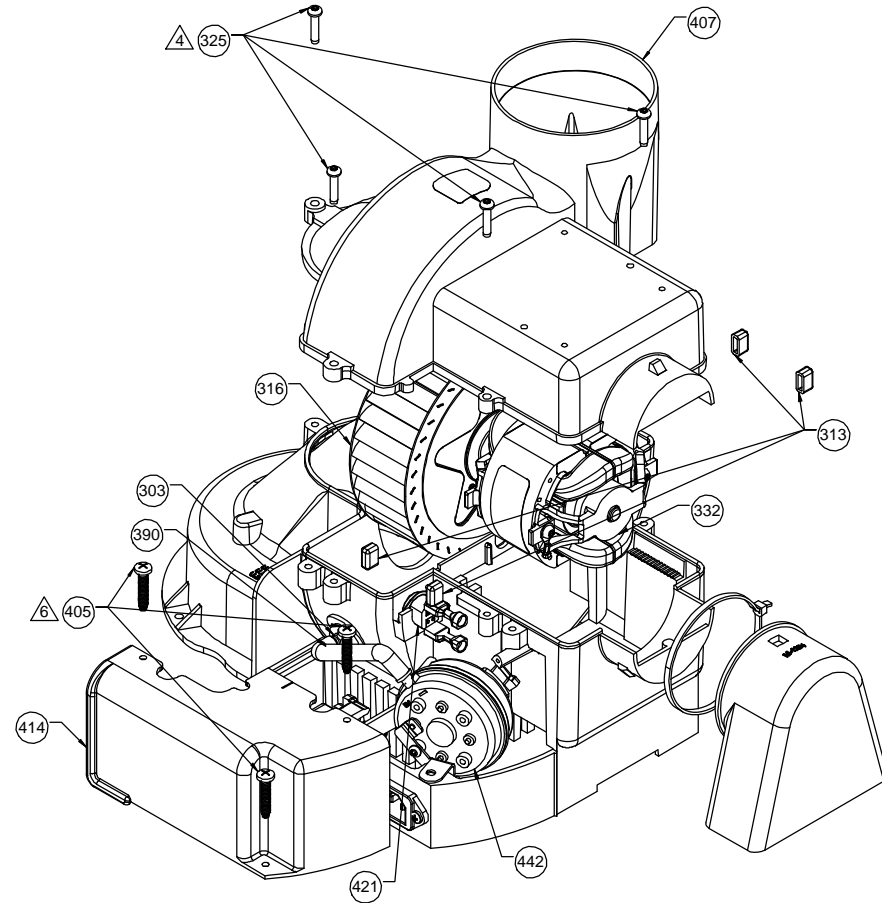
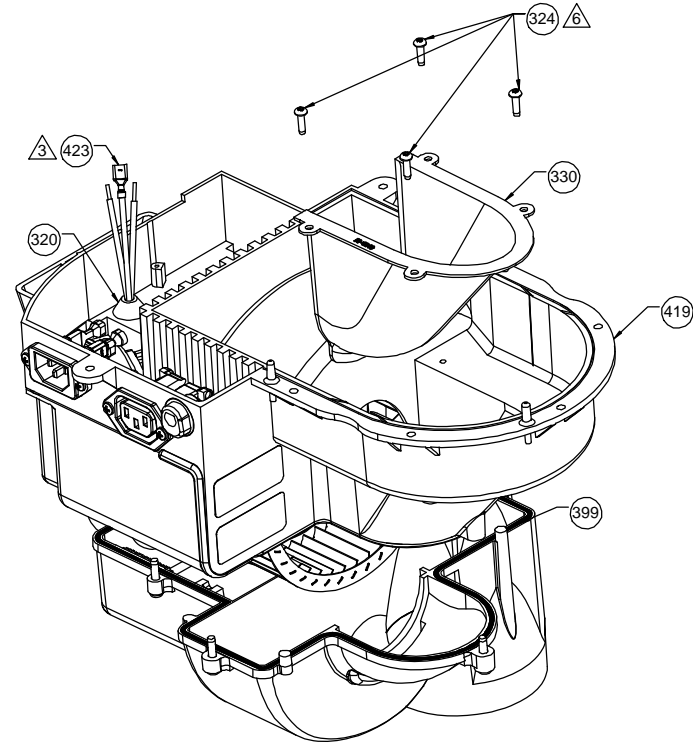
MODEL NO. W11

(WHITE)

DRAWING REVISION	AA	REVISION BY	SDM	DATE	4/5/2018	TOLERANCES UNLESS OTHERWISE SPECIFIED:	DRAWN BY	SDM	DATE	4/5/2018	Regal Beloit America, Inc.
ECO	ECO-0141634	APPROVED BY	MLS	DATE	4/5/2018	DEC. INCH mm ANGLE	DATE	4/5/2018	DESCRIPTION	OUTLINE BLOWER ASSY	PROCESS/FINISH
ECO DESCRIPTION						.XX ±0.1 (#2.5) ±1°	DATE	4/5/2018			SEE NOTE
						.XX ±0.01 (#0.25)	DATE	4/5/2018			
						.XXX ±0.005 (#0.127)	DATE	4/5/2018			
						XXXX ±0.0005 (#0.0127)	DATE	4/5/2018			
						REMOVE BURRS & BREAK SHARP EDGES: .003/.015 [0.076/.381] X 45° CORNER FILLETS: R.02 [51]	DATE	4/5/2018			
						MACHINED SURFACES: 125 INC/INCR 3.2 mm SHOWN IN [BRACKETS]	DATE	4/5/2018			
							THIRD ANGLE PROJECTION				
							SIZE	D	DRAWING NUMBER	702112654	SHEET 1 OF 3

NOTES:

- 1. APPLY SILICONE AROUND LEADS TO SEAL THE GROMMET.
- 2. IMPELLER DIMENSION IS TO BE MEASURED FROM WHEEL HUB TO MOTOR BRACKET.
- 3. ATTACH TERMINAL TO BLUE MOTOR LEAD AFTER LACING LEAD THROUGH THE GROMMET.
- 4. PC 325 SCREW DRIVE TORQUE 16 - 21 IN.LBS.
- 5. PC 325 SCREW ASSEMBLES IN THE OPPOSITE DIRECTION OF THE OTHER SCREWS.
- 6. PC 324 AMD PC 405 SCREW DRIVE TORQUE 5 - 9 IN.LBS.

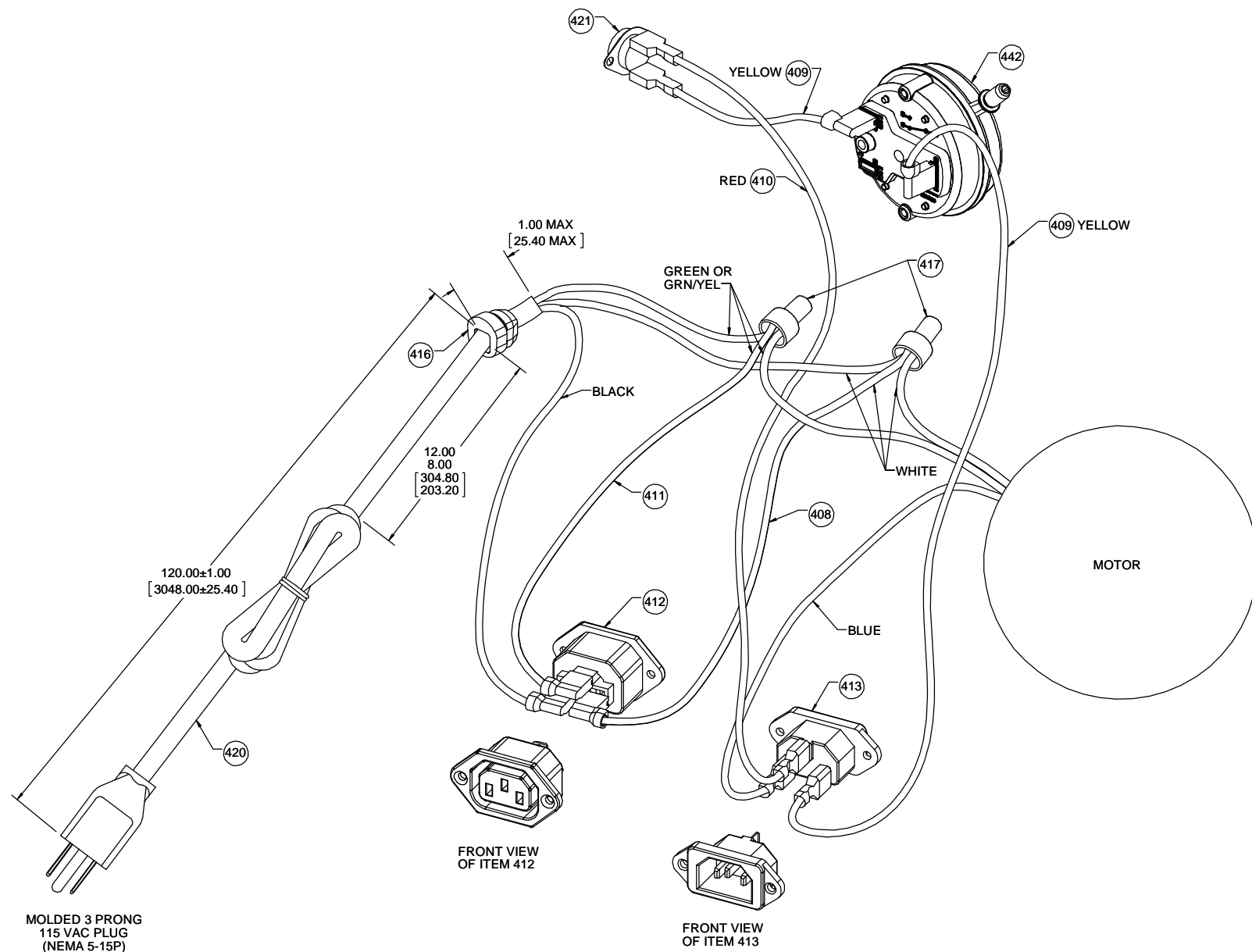
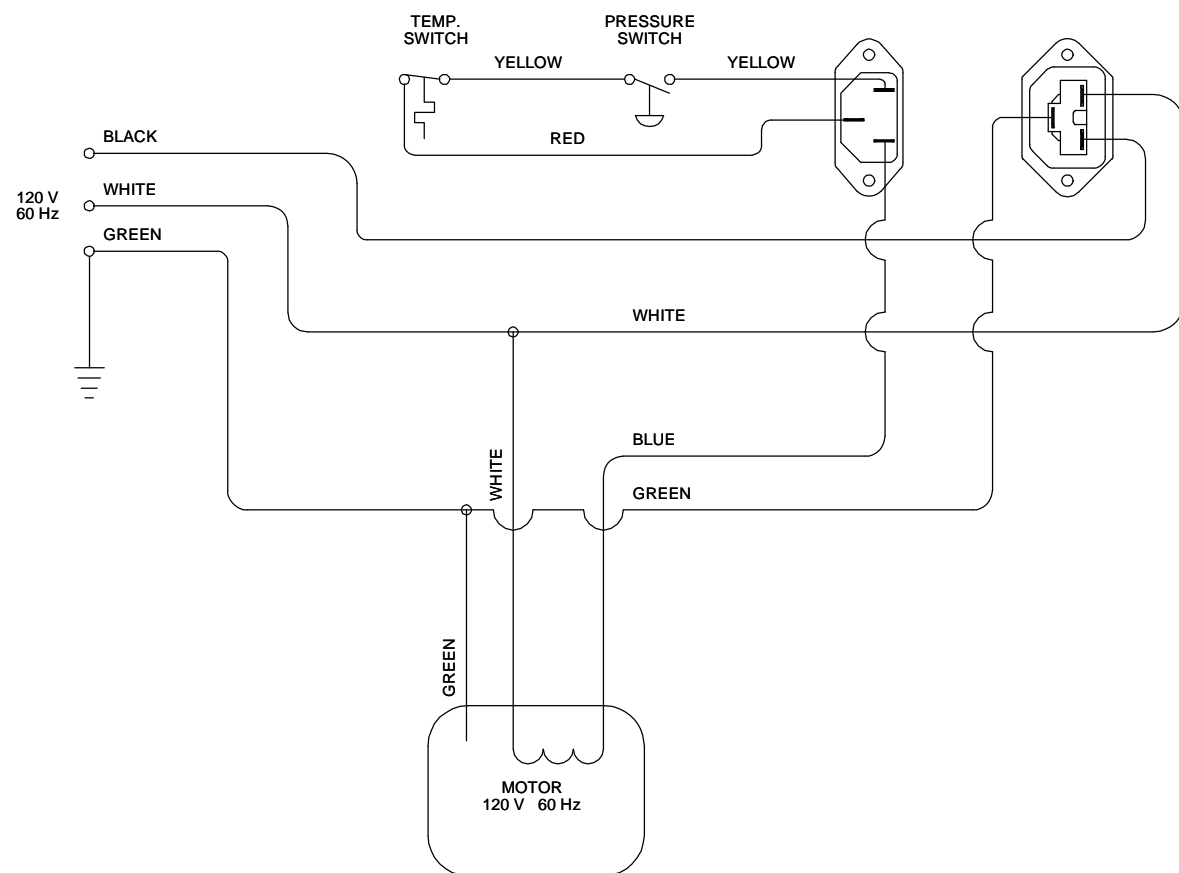


1
2
3
4
5
6
7
8
9
10
11
12
13
14
15
16
17
18
19
20
21
22
23
24
25
26
27
28
29
30
31
32
33
34
35
36
37
38
39
40
41
42
43
44
45
46
47
48
49
50
51
52
53
54
55
56
57
58
59
60
61
62
63
64
65
66
67
68
69
70
71
72
73
74
75
76
77
78
79
80
81
82
83
84
85
86
87
88
89
90
91
92
93
94
95
96
97
98
99
100

DRAWING REVISION		REVISION BY	DATE	TOLERANCES UNLESS OTHERWISE SPECIFIED:		DRAWN BY		SDM		Regal Beloit America, Inc.	
AA		SDM	4/5/2018	DEC.	INCH	mm	ANGLE	DATE	4/5/2018	DESCRIPTION	
ECO-0141634		APPROVED BY	DATE	.XX	±0.1	[±2.5]	±1°	APPROVED BY	MLS	OUTLINE	
ECO DESCRIPTION		DATE	4/5/2018	.XXX	±0.01	[±0.25]		DATE	4/5/2018	MATERIAL	
DRAW ON SOLID WORKS				.XXXX	±0.0005	[±0.0127]		REFERENCE		PROCESS/FINISH	
CORPORATE REGAL BELLOIT AMERICA, INC. ALL RIGHTS RESERVED. PROPRIETARY AND CONFIDENTIAL INFORMATION - THIS DOCUMENT IS THE PROPERTY OF REGAL BELLOIT AMERICA, INC. COMPANY AND CONTAINS OWNERS PROPRIETARY INFORMATION. ANY PERSON, CORPORATION OR OTHER FIRM RECEIVING IT IS DEEMED, BY RECEIVING IT, TO AGREE THAT IT, AND/OR ANY PART OF IT, SHALL NOT BE DISCLOSED TO ANY PERSON, CORPORATION OR OTHER ENTITY, DUPLICATED, AND/OR USED, EXCEPT AS EXPRESSLY APPROVED IN WRITING IN ADVANCE BY OWNER. THIS DOCUMENT SHALL BE RETURNED TO OWNER UPON REQUEST. IT MAY BE SUBJECT TO CERTAIN RESTRICTIONS UNDER APPLICABLE EXPORT CONTROL LAWS AND REGULATIONS.				REMOVE BURRS & BREAK SHARP EDGES: .003/.015 [0.076/.381] X 45°		CORNER FILLETS: R.02 [51]		THIRD ANGLE PROJECTION		SEE NOTE	
				MACHINED SURFACES: 125 INCR/mv		mm SHOWN IN [BRACKETS]		SIZE		DRAWING NUMBER	
								D		702112654	
										SHEET 2 OF 3	

NOTES:

1. CORDSET MATERIAL: TYPE SJT OR SJTOW, 18/3 105°C U.L. AND CSA APPROVED.
2. INTERNAL LEAD WIRE MATERIAL: 18 GA. 105°C PVC U.L. RECOGNIZED STYLE 1015 AND CSA APPROVED.
3. MOTOR LEAD MATERIAL: 18 GA. 125°C 2/64 INSULATION, X-LINKED POLY. U.L. AND CSA APPROVED.
4. THERMAL SWITCH OPEN 165° ± 6° F, CLOSE 145° ± 8° F.
5. PREASURE SWITCH N.O. SETTING -.75 ± .05 IN. W.C. ON PRESSURE FALL.



FRONT VIEW OF ITEM 412

FRONT VIEW OF ITEM 413

DRAWING REVISION AA	REVISION BY SDM	DATE 4/5/2018	TOLERANCES UNLESS OTHERWISE SPECIFIED: DEC. INCH mm ANGLE .X ±0.1 #2.5 ±1° .XX ±0.01 #0.25 .XXX ±0.005 #0.127 XXXX ±0.0005 #0.0127	DRAWN BY SDM	DATE 4/5/2018	DESCRIPTION OUTLINE BLOWER ASSY
ECO-0141634	APPROVED BY MLS	DATE 4/5/2018	REMOVE BURRS & BREAK SHARP EDGES: .003/.015 [0.076/.381] X 45° CORNER FILLETS: R.02 [51] MACHINED SURFACES: 125/3.2 mm SHOWN IN [BRACKETS]	APPROVED BY MLS	DATE 4/5/2018	MATERIAL PROCESS/FINISH SEE NOTE
DRAW ON SOLID WORKS			THIRD ANGLE PROJECTION	SIZE D	DRAWING NUMBER 702112654	SHEET 3 OF 3

Regal Beloit America, Inc.