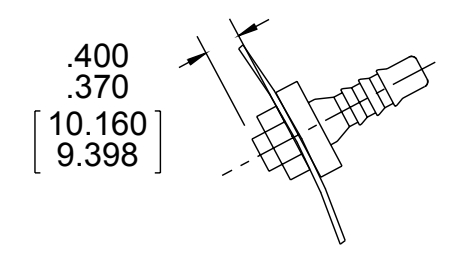


THERMALLY PROTECTED CLASS "B" INSULATION
416 S.S. SHAFT

| | | | | | | | | | | |
|--------------|------------|----|----|----|---|----|----|---|---|---|
| APPLICATION: | | B | LA | FR | A | S | C | E | B | A |
| CUSTOMER: | FASCO DIST | 18 | 21 | 30 | F | 06 | CK | 5 | 3 | 0 |
| CUSTOMER PN: | W10 | | | | | | | | | |

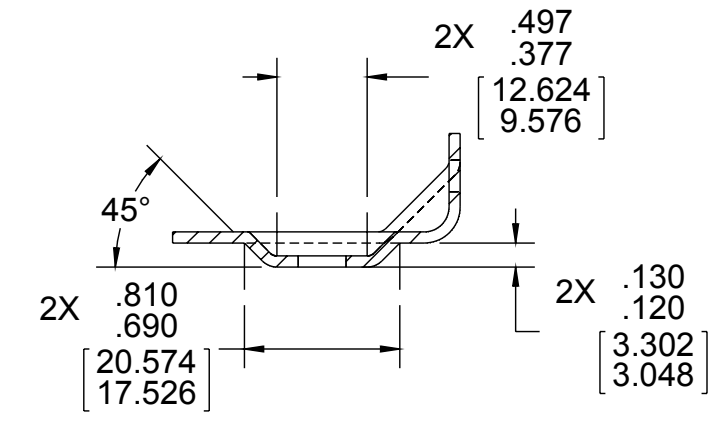
- NOTES:
- ADD PC 394 RTV CLEAR SEALANT AS SHOWN TO PC 304 INLET ADAPTER ASSY.
 - SEAL ALL EDGES OF PC 330 EXHAUST ADAPTER TO PC 306 PTD. HSG. WITH PC 394 RTV CLEAR SEALANT.
 - STATIC TAP READING TO BE .6 MIN. CORRECTED TO STD. AIR (0.075 LB/FT³) WITH A 1.5 [38.1] IN. [mm] EXHAUST RESTRICTOR.
 - PC 330 EXHAUST ADAPTER MUST BE MADE FROM BLACK ABS MATERIAL.
 - INSPECTION TEST FIXTURE REQUIRED.
 - IMPELLER BACKPLATE TO BE .35/.31 [8.89/ 7.87] FROM INSIDE OF HOUSING ON MOTOR SIDE.
 - STATIC TAP TO BE TIGHT AND SECURELY FASTENED.
 - TAPE BOTTOM OF CARTON. PLACE FOAM IN CARTON. PLACE BLOWER ON FOAM EXHAUST UP (ALLOW FOAM TO EXPAND). PLACE FOAM ON TOP OF BLOWER AND CLOSE LID (ALLOW FOAM TO EXPAND).
 - PACK 1 PER CONTAINER, 4 CONTAINERS PER LAYER, 3 LAYERS PER PALLET, 12 MAX. PER PALLET, PACKING ASSY.: 87854999, PER P.S. 88834200 AND P.S. 88834408.
 - CARTON LABELS MUST ALL FACE ONE DIRECTION TOWARD THE OPEN END OF THE PALLET. SEE P.S. 88834408.
 - NO PACKAGING TAPE OVER CARTON LABEL.



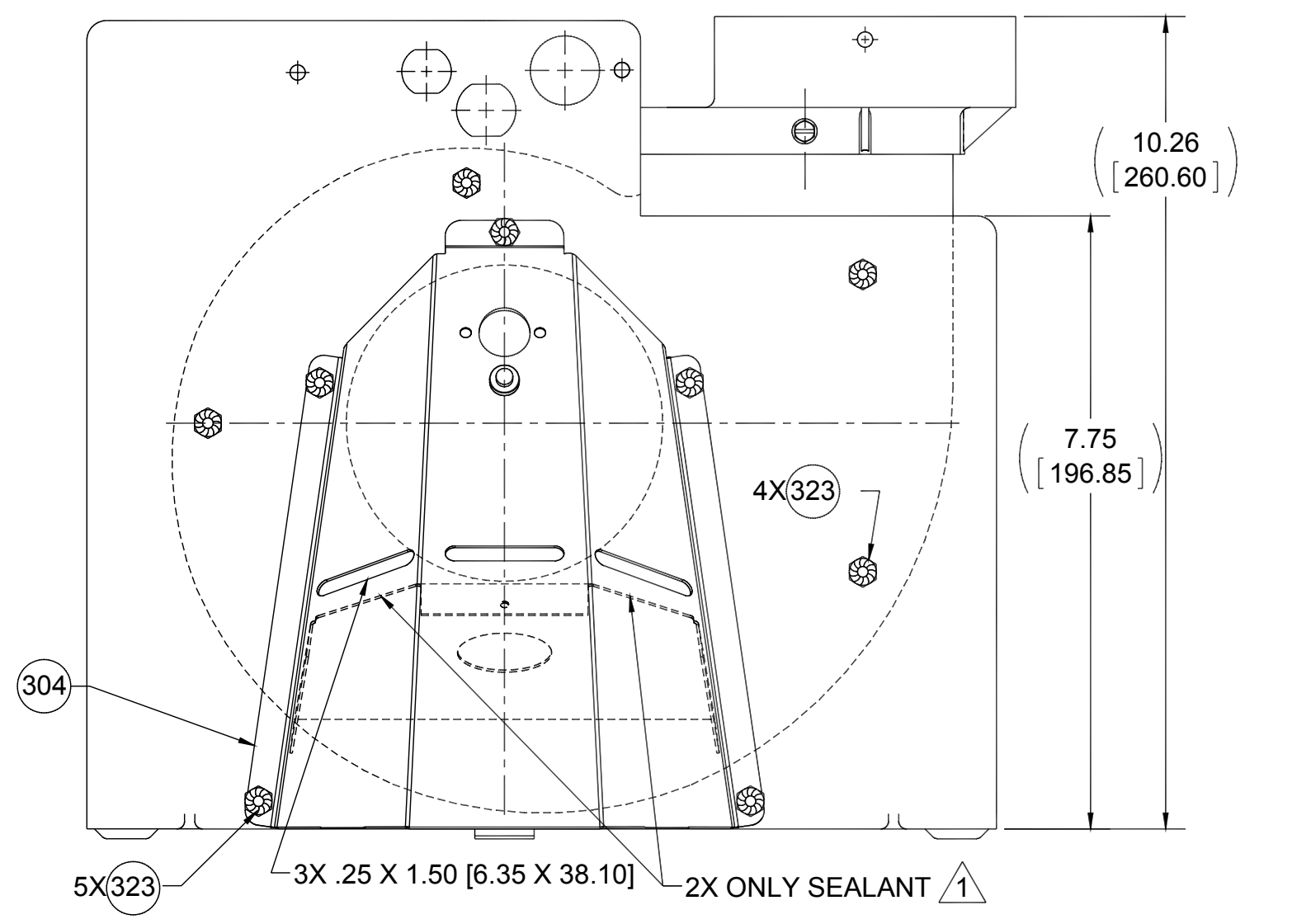
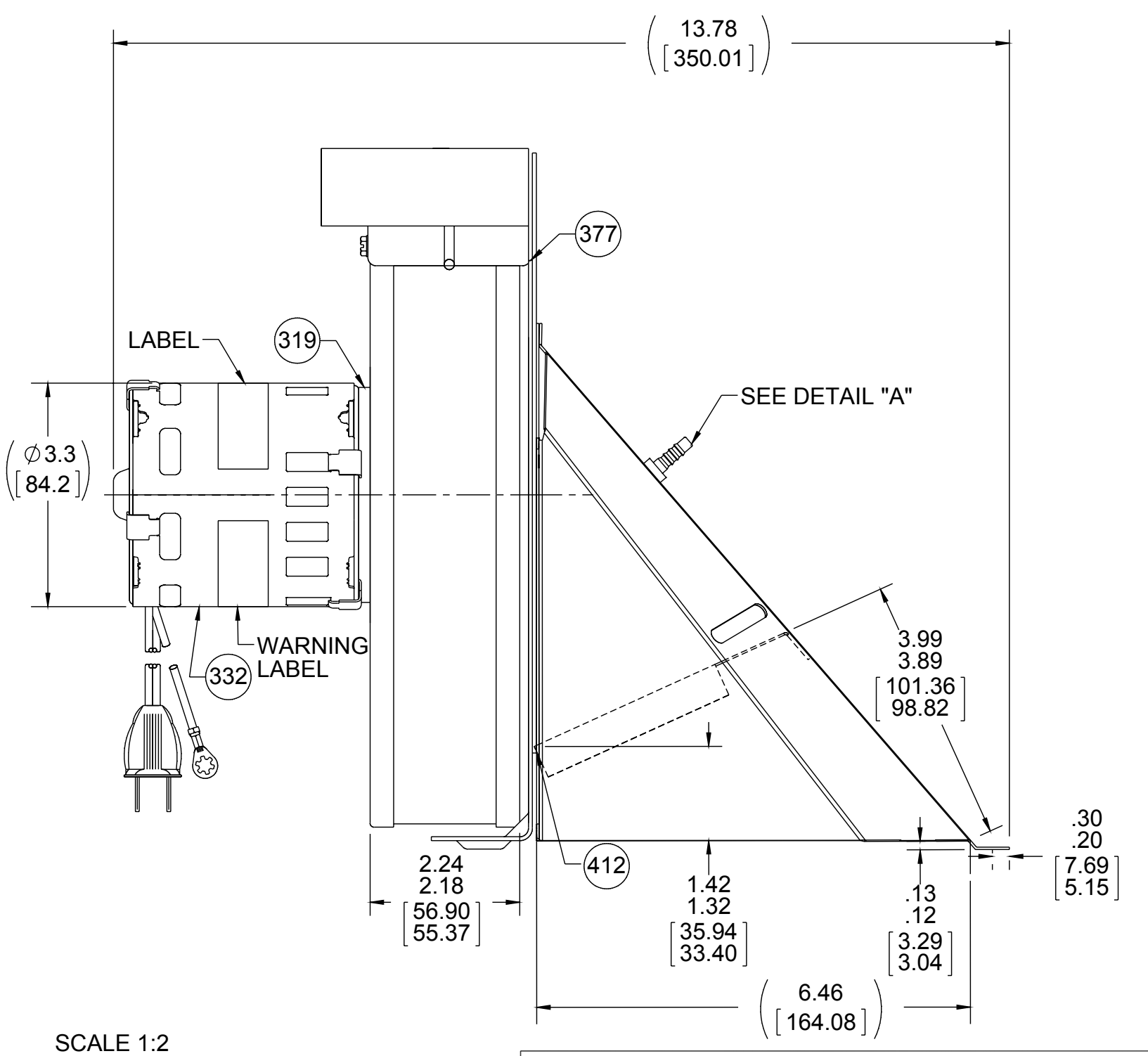
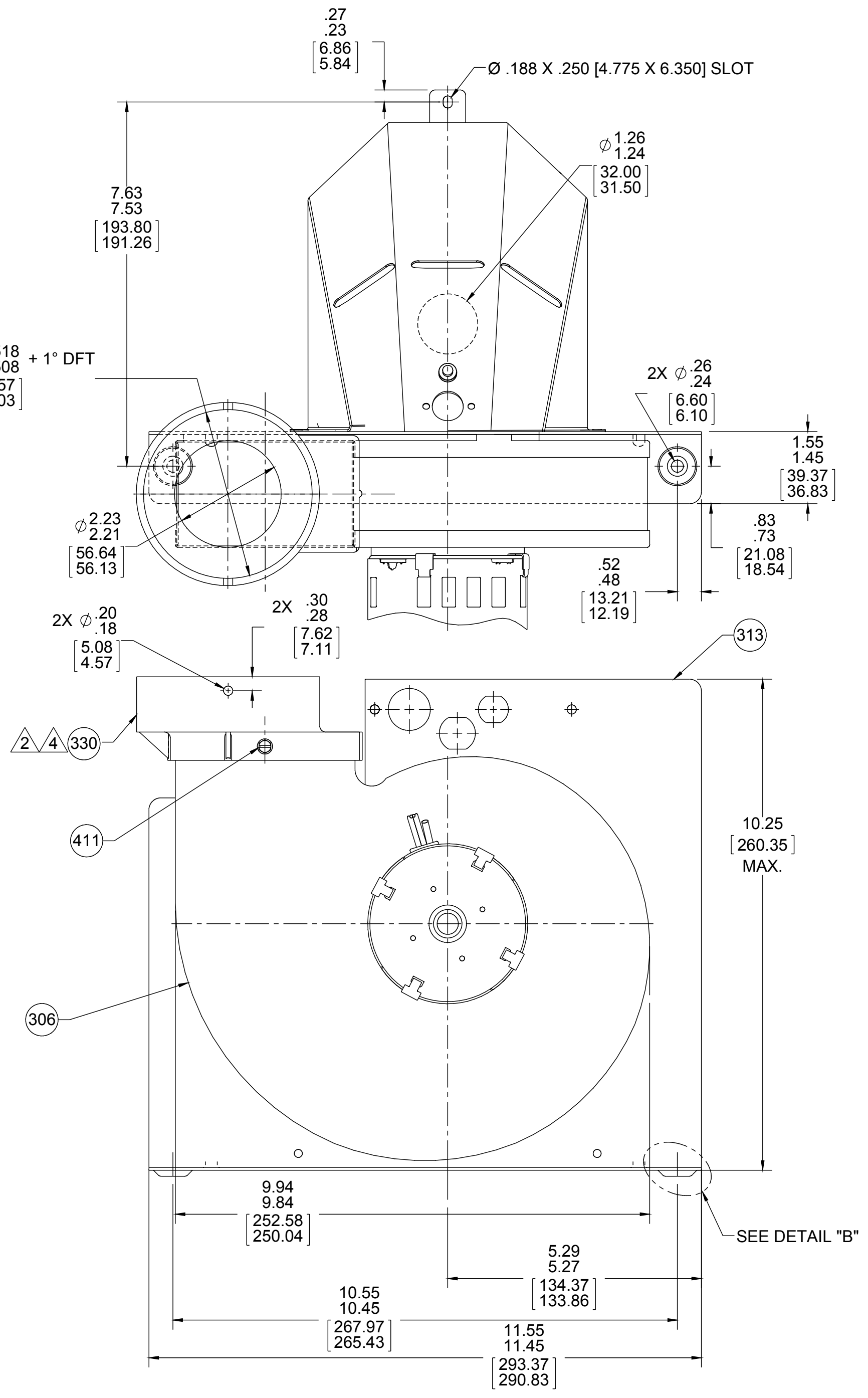
DETAIL "A"
SCALE: 1:2

LEAD MATERIAL
18 GA., 105°C, 3/64 INSUL.
SPT-2, BLK
17.00/15.00 [431.80/381.00] IN. [mm] LONG

GROUND LEAD
18 GA., 125°C, 2/64 INSUL.
X-LINKED POLY., GRN/YEL
17.00/15.00 [431.80/381.00] IN. [mm] LONG
W/RING TERM. 89020156
AMP 61794-1



DETAIL "B"
SCALE: 1:2



TYPICAL PERFORMANCE TEST DATA WITH 1.5" EXHAUST ADAPTER
AT 115 VOLTS 60 Hz

| | RPM | WATTS | AMPS |
|--|------|-------|------|
| | 3316 | 140 | 1.92 |

BLOWER WEIGHT LBS. ENDPLAY .030/.010 [762/0.254]

| | | | | | | |
|-----------------------|--------------------|-------------------|--|--------------------|-----------------------------|------------------------------|
| DRAWING REVISION E | REVISION BY BGP | DATE 7/13/2015 | TOLERANCES UNLESS OTHERWISE SPECIFIED: DEC. INCH. mm ANGLE .XX +0.01 [-0.25] [1-2.5] .XXX +0.005 [-0.127] [1-0.127] XXXX +0.0005 [-0.0127] [1-0.0127] | DRAWN BY BGP | DATE 7/13/2015 | DESCRIPTION BLOWER ASSY |
| ECO-0071876 | APPROVED BY SDM | DATE 7/13/2015 | CONVERTED TO SOLIDWORKS PROPRIETARY AND CONFIDENTIAL INFORMATION - THIS DOCUMENT IS THE PROPERTY OF REGAL BELLOIT AMERICA, INC. OWNERSHIP AND CONTENTS OWNERS PROPRIETARY INFORMATION. ANY PERSON, CORPORATION OR OTHER FIRM RECEIVING IT IS DEEMED TO HAVE AGREED TO ACCEPT THAT IT AND/OR ANY PART OF IT SHALL NOT BE DISCLOSED TO ANY PERSON, CORPORATION OR OTHER ENTITY, DUPLICATED, AND/OR USED, EXCEPT AS EXPRESSLY APPROVED IN WRITING BY OWNER. THIS DOCUMENT SHALL BE RETURNED TO OWNER UPON REQUEST. IT MAY BE SUBJECT TO CERTAIN RESTRICTIONS UNDER APPLICABLE EXPORT CONTROL LAWS AND REGULATIONS. | APPROVED BY SDM | DATE 7/13/2015 | MATERIAL FLAT BLACK |
| BLOWER ASSY | | | THIRD ANGLE PROJECTION | SIZE D | DRAWING NUMBER 702112067 | PROCESS/FINISH FLAT BLACK |
| | | | | | | SHEET 1 OF 1 |