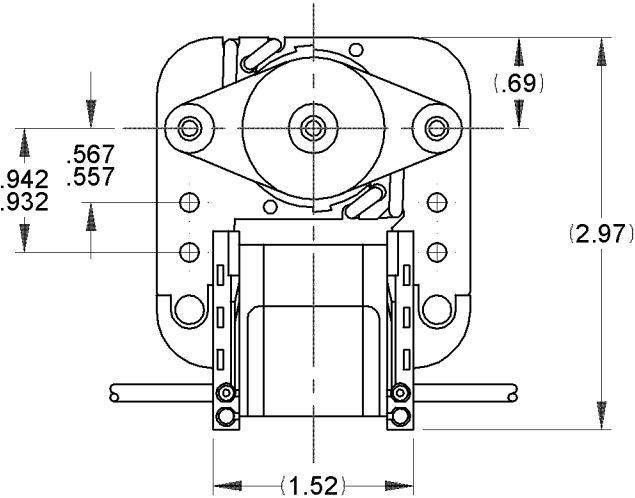
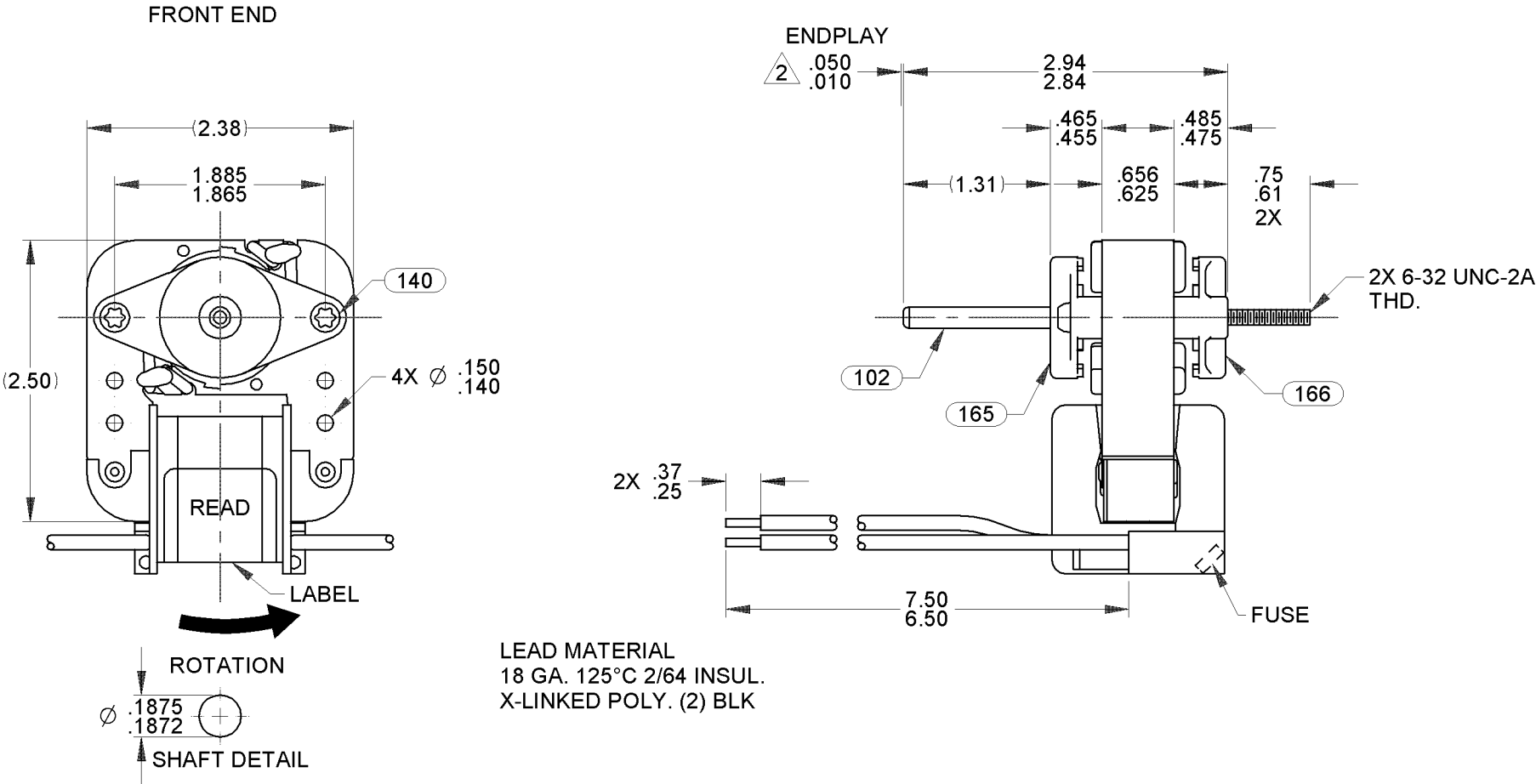


00	RELEASE FOR PRODUCTION.	SDM 11/10/08	01	REVISED NOTES AND ADDED CARTON LABEL NOTES	4005236 MLM 4/12/12	02	UPDATED ROTOR AND SHAFT PRINT.	4012658 MLS 6/12/2014	STANDARD TOLERANCES: ANGULAR +/- 1 DEGREE 2 PLACE DECIMAL +/- .01 3 PLACE DECIMAL +/- .005
----	-------------------------	--------------	----	--	------------------------	----	--------------------------------	--------------------------	---



- NOTES:
1. MOTOR HAS 130°C ONE SHOT FUSE.
 2. SHAFT EXTENSION TO BE MEASURED WITH END PLAY PUSHED IN.
 3. SHIM FRONT END WITH (1) PC 246 SPACER. SHIM BACK END WITH (1) PC 246 SPACER AND (1) PC 247 WASHER.
 4. ADD PC 247 WASHER ON FRONT ONLY AS REQUIRED TO MAINTAIN SPECIFIED ENDPLAY.
 5. STATOR CORE, STATOR BAR, AND ROTOR CORE ASSEMBLIES ARE COATED WITH TWIN EMULSION.
 6. MOTOR MUST START AT 140 VOLTS.
 7. MOUNTING ACCESSORIES: PC 235 HUB, PC 233 SPACER, PC 234 SPACER, PC 227 SCREW, PC 228 SCREW, PC 229 SCREW, PC 230 NUT, PC 231 NUT, PC 232 SPLICE, AND PC 236 MOUNTING BRACKET.
 8. PLACE MOUNTING ACCESSORIES IN PC 157 PLASTIC BAG AND STAPLE CLOSED.
 9. PACK 1 PER CONTAINER, 175 MAX. PER PALLET, 35 CONTAINERS PER LAYER, 5 LAYERS PER PALLET, PACKING ASSY. 87854699, P.S. 88834200 AND P.S. 88834408.
 10. PLACE (1) BAG OF MOUNTING ACCESSORIES, PC 121 FAN, AND PC 122 FAN IN CONTAINER WITH MOTOR.
 11. CARTON LABELS MUST ALL FACE ONE DIRECTION TOWARD THE OPEN END OF THE PALLET. SEE P.S. 88834408.
 12. NO PACKAGING TAPE OVER CARTON LABEL.

61299553 99581235 00464282

FASCO

Model: K672

71581235
J238-062
240 V 60 Hz
1/150 HP .34 LRA
.29 FLA 3000 RPM
Max. Amb: 40°C AO
E64080 E48562
Class B
T.P. C
Assembled in Mexico

SAFETY WARNING
This Motor Must Be
Grounded in
According to Local
Or National Electrical
Codes To Prevent
Possible Injury Due To
Electrical Shock

FRONT SHAFT POSITION		TYPICAL PERFORMANCE AT 240 VOLTS 60 Hz												CUSTOMER:		FASCO DIST		<div><div>FASCO</div><div>FASCO MOTORS GROUP AC MOTOR/BLOWER DIVISION</div></div>																
<div>HORIZONTAL<div><div>UP</div><div>DOWN</div></div></div>	MOTOR SPEED	IDLE			LOADED				LOCKED			BREAK	PART NUMBER:		K672		CONFIDENTIAL: DO NOT DUPLICATE OR DISCLOSE TO THIRD PARTIES WITHOUT WRITTEN PERMISSION OF FASCO MOTORS GROUP, AC MOTOR/BLOWER DIVISION.																	
		R.P.M.	AMP.	WATT	IN.OZ.	R.P.M.	AMP.	WATT	IN.OZ.	AMP.	WATT	IN.OZ.																						
		3391	.27	26	2.44	3000	.29	31	2.63	.34	40	3.89	APPLICATION:		MOTOR WEIGHT:					1.5 LBS					MOTOR TYPE					DRAWING NUMBER				
													ENVIRONMENT:		DRY		MOTOR, C - FRAME					7158 1235												
													FINISH COLOR:		NATURAL		B	LA	FR	A	S	C	E	B	A	REV.								
	CUSTOMER APPROVAL:												DRAWN BY:		SDM		00	58	52	X	01	OR	5	J	0	02								
SIGNED:												DATE DRAWN:		11/10/2008																				
DATE:																																		