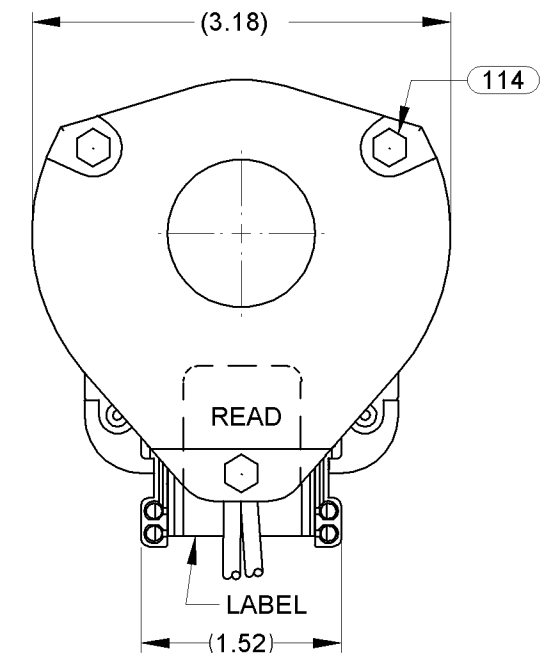
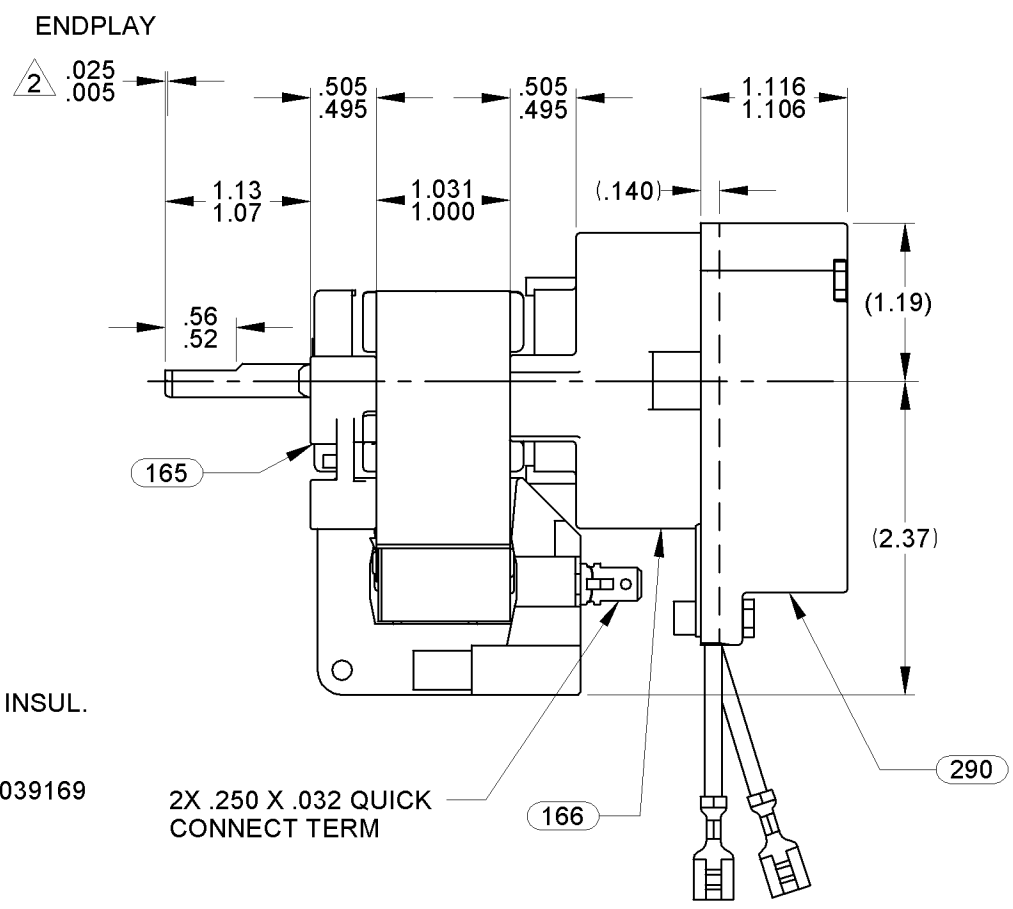
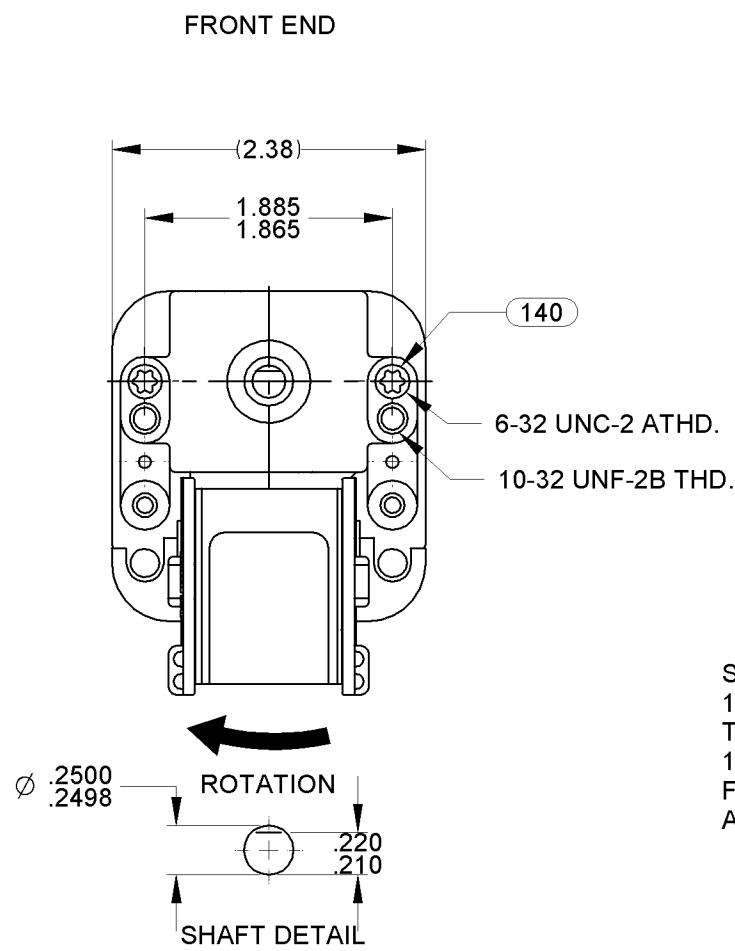


01	REVISED NOTE #3 AND ADDED HI POT NOTE.	4000193 RPT 11/09/10	02	ADDED CARTON LABEL NOTES AND UPDATE TO STANDARD	4003806 MLM 11/21/11	03	UPDATED NOTES TO STANDARD.	4012283 MLS 4/22/2014	STANDARD TOLERANCES: ANGULAR +/- 1 DEGREE 2 PLACE DECIMAL +/- .01 3 PLACE DECIMAL +/- .005		
----	--	-------------------------	----	---	-------------------------	----	----------------------------	--------------------------	---	--	--



SWITCH LEADS
18 GA. 105°C 4/64 INSUL.
THERMO., BLU
19.00/17.00 LONG
FSPADE TERM 89039169
AMP 2-520263-2

- NOTES:
- MOTOR HAS 416 SS SHAFT.
 - SHAFT EXTENSION MEASURED WITH ENDPLAY PULLED OUT.
 - SWITCH MUST MAKE CONTACT BEFORE 2500 RPM AND BREAK CONTACT ABOVE 800 RPM.
 - SWITCH MECHANISM MUST GIVE QUIET OPERATION ABOVE 2500 R.P.M.
 - SWITCH ACTUATOR ASSEMBLY COMPONENTS MUST BE 316 SS.
 - PRESS ACTUATOR ASSEMBLY AND THIMBLE SO THAT TOP OF METAL ACTUATOR PLATE IS .568/.548 FROM END OF SHAFT.
 - ASSEMBLE SWITCH ASSEMBLY AND ACTUATOR PER P.S. 88834261.
 - SWITCH MUST BE ADJUSTED TO OBTAIN .035/.025 AIR GAP BETWEEN THIMBLE AND SWITCH IN FULL OPERATING POSITION.
 - ADD ONE DROP OF PC 230 GLYPTAL TO PC 201 SCREW HEAD AFTER ASSEMBLING SWITCH.
 - MOTOR MUST START AT 70 VOLTS.
 - HI POT PER P.S. 88834420.
 - SHIM BOTH ENDS WITH (1) PC 246 SPACER AND (1) PC 247 WASHER. ADD PC 247 WASHER ON BACK END AS REQUIRED TO MAINTAIN SPECIFIED ENDPLAY.
 - TORQUE ALL FASTENERS PER P.S. 88834377.
 - PACK 1 PER CONTAINER, 200 MAX. AMT. PER PALLET, 40 CONTAINERS PER LAYER, 5 LAYERS PER PALLET, PACKING ASSY: 87854563 PER P.S. 88834200 AND P.S. 88834408.
 - CARTON LABELS MUST ALL FACE ONE DIRECTION TOWARD THE OPEN END OF THE PALLET. SEE P.S. 88834408.
 - NO PACKAGING TAPE OVER CARTON LABEL.

61299553 99581217 00469103

FRONT SHAFT POSITION		TYPICAL PERFORMANCE AT 120 VOLTS 60 Hz											CUSTOMER: FASCO DIST.		FASCO MOTORS GROUP AC MOTOR/BLOWER DIVISION CONFIDENTIAL: DO NOT DUPLICATE OR DISCLOSE TO THIRD PARTIES WITHOUT WRITTEN PERMISSION OF FASCO MOTORS GROUP, AC MOTOR/BLOWER DIVISION.										
HORIZONTAL		MOTOR SPEED	IDLE			LOADED			LOCKED			BREAK	PART NUMBER: K629	APPLICATION: MOBILE HOME FURNACE											MOTOR TYPE
			R.P.M.	AMP.	WATT	IN.OZ.	R.P.M.	AMP.	WATT	IN.OZ.	AMP.	WATT	IN.OZ.	MOTOR WEIGHT: 2.5 LBS.	MOTOR, C - FRAME					7158 1217					
CUSTOMER APPROVAL:														ENVIRONMENT: DRY	FINISH COLOR: NATURAL	B	LA	FR	A	S	C	E	B	A	REV. 03
SIGNED:														FINISH COLOR: NATURAL	DRAWN BY: RON TAYLOR	00	58	41	X	04	OX	0	1	0	
DATE:														DATE DRAWN: FEBRUARY 25, 2009											