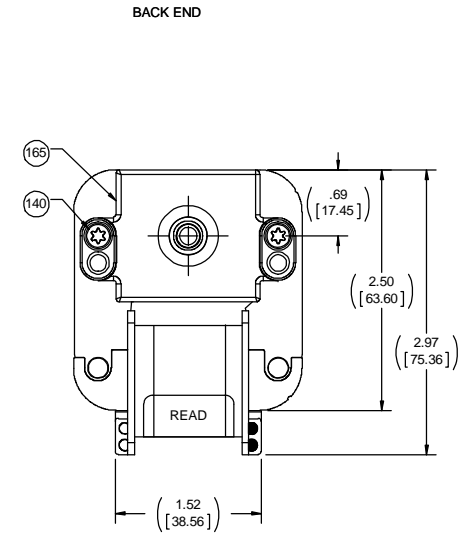
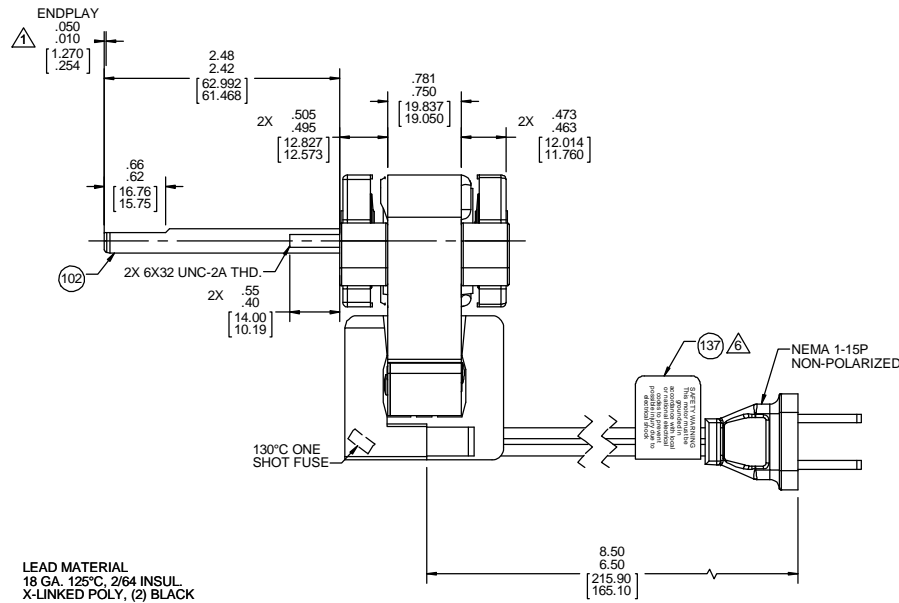
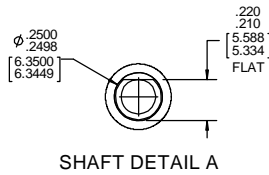


ROTATION



- NOTES:
- SHAFT EXTENSION MEASURED WITH END PLAY PUSHED IN.
  - SHIM BOTH ENDS WITH (1) PC 246 WASHER AND (1) PC 247 WASHER. ADD PC 247 WASHER ON BACK END AS REQUIRED TO MAINTAIN SPECIFIED ENDPLAY.
  - MOTOR MUST START AT 70 VOLTS.
  - HIPOT PER 88834420.
  - ROTOR CORE, STATOR CORE AND STATOR BAR ASSEMBLIES ARE COATED WITH TWIN EMULSION.
  - FOLD PC 137 IN HALF AROUND CORD.
  - PACK 6 PER CONTAINER, 12 CONTAINERS PER LAYER, 9 LAYERS PER PALLET, 648 MAX. AMOUNT PER PALLET. PACKING ASSEMBLY 87854178, PER 88834200 AND 88834408.
  - CARTON LABELS MUST ALL FACE ONE DIRECTION TOWARD THE OPEN END OF THE PALLET. SEE 88834408.
  - NO PACKAGING TAPE OVER CARTON LABEL.

61305568

**SAFETY WARNING**  
This motor must be grounded in accordance with local or national electrical codes to prevent possible injury due to electrical shock.

**AVERTISSEMENT DE SÉCURITÉ**  
Ce moteur doit être fondée sur conformément à la réglementation locale ou national électrique codes pour prévenir d'éventuelles blessures en raison de choc électrique.

61299553

99581214

**FASCO**  
Model: K611  
71581214  
J238-075  
120 V 60 Hz  
1/100 HP .78 LRA  
63 FLA 3000 RPM  
Max Amb 40°C AO  
E64080 E48562  
Class B  
T.P.  
Assembled in Mexico

CUSTOMER:	FASCO DIST.	APPLICATION:									
CUSTOMER PN:	K611	MOTOR WEIGHT:	1.75 LBS								
	UP	ENVIRONMENT:	DRY								
HORIZONTAL	MOTOR TYPE				REFERENCE SAMPLE						
	B	LA	FR	A	S	C	E	B	A		
	00	58	52	X	12	OF	5	1	0		
TYPICAL PERFORMANCE AT 120 VOLTS 60 HZ											
	IDLE			LOADED			LOCKED		BREAK		
MOTOR SPEED	RPM	AMP	WATT	IN OZ	RPM	AMP	WATT	IN OZ	AMP	WATT	IN OZ
	3441	.56	28	3.88	3000	.63	36	2.96	.78	43	4.99

DRAWING REVISION	AA	REVISION BY	JMG	DATE	05/04/2018	TOLERANCES UNLESS OTHERWISE SPECIFIED:	DEC.	INCH	mm	ANGLE	\$1"	
ECO	ECO-0142224	APPROVED BY	PLA	DATE	05/04/2018	.X	±0.1	[±2.5]				
ECO DESCRIPTION	REDRAWN TO SW. REVISED WARNING LABEL	APPROVED BY	PLA	DATE	05/04/2018	.XX	±0.01	[±0.25]				
COPYRIGHT REGAL BELTO AMERICA, INC. ALL RIGHTS RESERVED.						.XXX	±0.005	[±0.127]				
PROPRIETARY AND CONFIDENTIAL INFORMATION. THIS DOCUMENT IS THE PROPERTY OF REGAL BELTO AMERICA, INC. FORMERLY AND CONTAINS OWNERS PROPRIETARY INFORMATION. ANY PERSON, CORPORATION OR OTHER FIRM RECEIVING IT IS DEEMED BY RECEIVING IT, TO AGREE THAT IT, AND/OR ANY PART OF IT, SHALL NOT BE DISCLOSED TO ANY PERSON, CORPORATION OR OTHER ENTITY. DUPLICATED, AND/OR USED, EXCEPT AS EXPRESSLY APPROVED IN WRITING IN ADVANCE BY OWNER. THIS DOCUMENT SHALL BE RETURNED TO OWNER UPON REQUEST. IT MAY BE SUBJECT TO CERTAIN RESTRICTIONS UNDER APPLICABLE EXPORT CONTROL LAWS AND REGULATIONS.						.XXXX	±0.0005	[±0.0127]				
REMOVE BURRS & BREAK SHARP EDGES. .0031 [0.15] [0.76] / 351] X 45° CORNER FILLETS: R. 02 [51] MACHINED SURFACES: .125 / 3.2 INCH / mm SHOWN IN [BRACKETS]						DRAWN BY	JMG	REGAL™	Regal Beloit America, Inc.	DESCRIPTION	OUTLINE MOTOR ASSY	
						THIRD ANGLE PROJECTION	SIZE	C	DRAWING NUMBER	71581214	PROCESS/FINISH	NATURAL
										SHEET	1 OF 1	