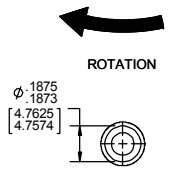
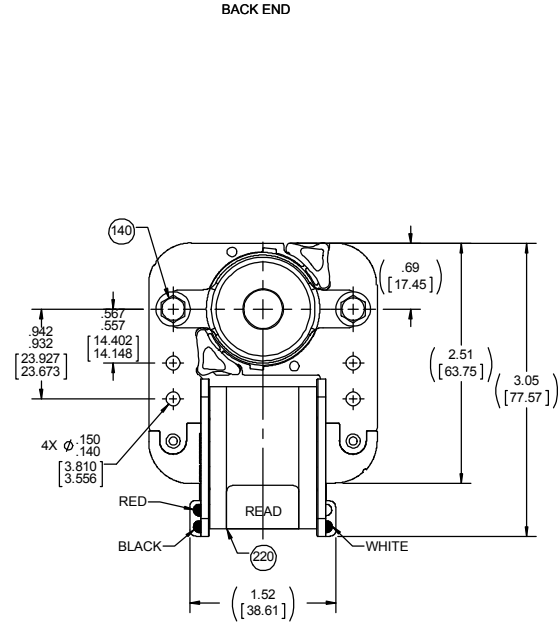
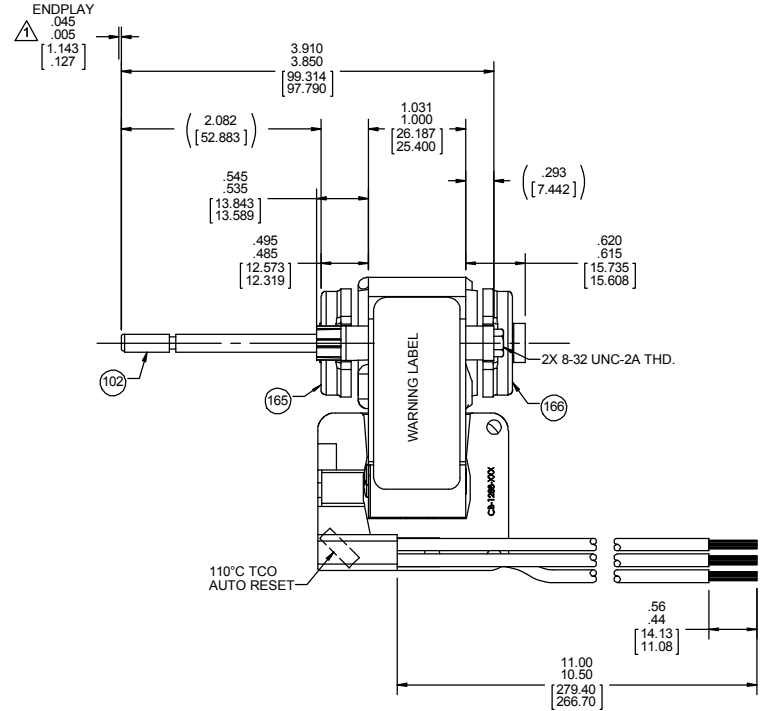
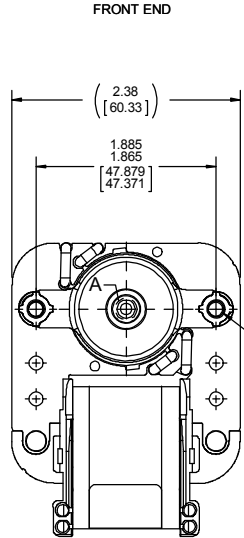


4

3

2

1



LEAD MATERIAL
18 GA, 125°C, 2/64 INSUL
X-LINKED POLY, (1) RED,
(1) WHITE AND (1) BLACK

- NOTES:
- SHAFT EXTENSION MEASURED WITH END PLAY PUSHED IN
 - NO SHIMS REQUIRED ON BACK END, SHIM FRONT END WITH (1) PC245, (1) MINIMUM TO (4) MAXIMUM OF PC 246 AND (1) MINIMUM TO (2) MAXIMUM OF PC 247.
 - APPLY (1) DROP OF LUBRICANT TO AID START UP.
 - STATOR ASSEMBLY COMPLETE IS VARNISHED. ROTOR CORE ASSEMBLY IS COATED WITH TWIN EMULSION.
 - MOTOR MUST START AT 140 VOLTS.
 - HIPOT PER 88834420.
 - PACK 1 UNIT PER CONTAINER, 42 CONTAINERS PER LAYER, 6 LAYERS PER PALLET, 252 MAX. AMOUNT PER PALLET. PLACE 1 KIT AND 1 FAN IN EACH CONTAINER, PLACE PLAT PAD ON PALLET, BETWEEN EACH LAY AND ON TOP OF PALLET.
 - CARTON LABELS MUST ALL FACE ONE DIRECTION TOWARD THE OPEN END OF THE PALLET PER 88834408.
 - NO PACKING TAPE OVER CARTON LABELS.

61305568

SAFETY WARNING
This motor must be grounded in accordance with local or national electrical codes to prevent possible injury due to electrical shock.

AVERTISSEMENT DE SECURITE
Ce moteur doit être fondée sur conformément à la réglementation locale ou nationale électrique codes pour prévenir d'éventuelles blessures en raison de choc électrique.

61299553 99583126 00470509

FASCO
Model: K11875

71583126
J238-100
120/240 V 50/60 HZ
Ref. 1/60 H.P.
FLA 72/58/36/29
LRA 92/75/47/37
2500/3000 RPM
Max Amb 40°C AO
E64080 E48562
Class B
T.P.
Assembled in Mexico

REGAL™
CONNECTION DIAGRAM
Whit - Common
Blk - 120V
Red - 240V

CUSTOMER:	FASCO DIST.	APPLICATION:	COUNTER SALES
CUSTOMER PN:	K1675	MOTOR WEIGHT:	1.8 LBS
UP		ENVIRONMENT:	
MOTOR TYPE		REFERENCE SAMPLE	
MOTOR, C-FRAME			
B	LA	FR	A
00	58	52	X
			04
C	E	B	A
AY	9	J	0
TYPICAL PERFORMANCE AT 120/240 VOLTS 50/60 HZ			
IDLE		LOADED	
LOCKED		BREAK	
MOTOR SPEED	RPM	AMP	WATT
120/60	3530	.46	27
120/50	2970	.30	32
240/60	3535	.23	25
240/50	2930	.31	31
		RPM	AMP
		3000	.58
		2500	.71
		3000	.28
		2500	.36
		IN OZ	AMP
		3.0	.73
		3.7	.91
		3.0	.37
		4.2	.46
		WATT	IN OZ
		40	47
		46	58
		38	44
		54	7.8

DRAWING REVISION	AA	REVISION BY	FDP	DATE	2/21/2019	TOLERANCES UNLESS OTHERWISE SPECIFIED:	DRAWN BY	FDP	REGAL™ Regal Beloit America, Inc.
ECO DESCRIPTION	ECO-0161693	APPROVED BY	SED	DATE	2/21/2019	DEC. INCH mm ANGLE	DATE	FDP	DESCRIPTION
RELEASED FOR PRODUCTION						.X ±0.1 [2.5] \$1°	2/21/2019	SED	OUTLINE MOTOR ASSY
COPYRIGHT REGAL BELOIT AMERICA, INC. ALL RIGHTS RESERVED. PROPRIETARY AND CONFIDENTIAL INFORMATION. THIS DOCUMENT IS THE PROPERTY OF REGAL BELOIT AMERICA, INC. OWNERS AND CONTAINS OWNERS PROPRIETARY INFORMATION. ANY PERSON, CORPORATION OR OTHER FIRM RECEIVING IT IS DEEMED BY RECEIVING IT TO AGREE THAT IT, AND/OR ANY PART OF IT, SHALL NOT BE DISCLOSED TO ANY PERSON, CORPORATION OR OTHER ENTITY, DUPLICATED, AND/OR USED, EXCEPT AS EXPRESSLY APPROVED IN WRITING IN ADVANCE BY OWNER. THIS DOCUMENT SHALL BE RETURNED TO OWNER UPON REQUEST. IT MAY BE SUBJECT TO CERTAIN RESTRICTIONS UNDER APPLICABLE EXPORT CONTROL LAWS AND REGULATIONS.						.XX ±0.01 [0.25]	2/21/2019	SED	MATERIAL
						.XXX ±0.005 [0.127]	2/21/2019	SED	PROCESS/FINISH
						.XXXX ±0.0005 [±0.0127]	2/21/2019	SED	NATURAL
						REMOVE BURRS & BREAK SHARP EDGES: .0031015 [0.078351] X 45° CORNER FILLETS: R.02 [.51]	2/21/2019	SED	THIRD ANGLE PROJECTION
						MACHINED SURFACES: .125 / 3.2 INCH/ mm SHOWN IN [BRACKETS]	2/21/2019	SED	SIZE [DRAWING NUMBER]
							2/21/2019	SED	71583126
							2/21/2019	SED	SHEET 1 OF 1