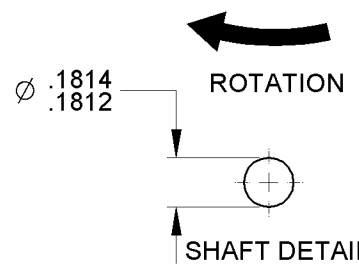
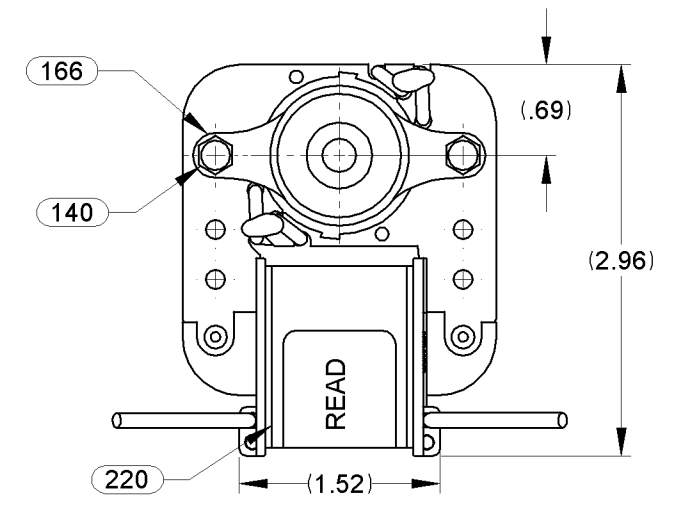
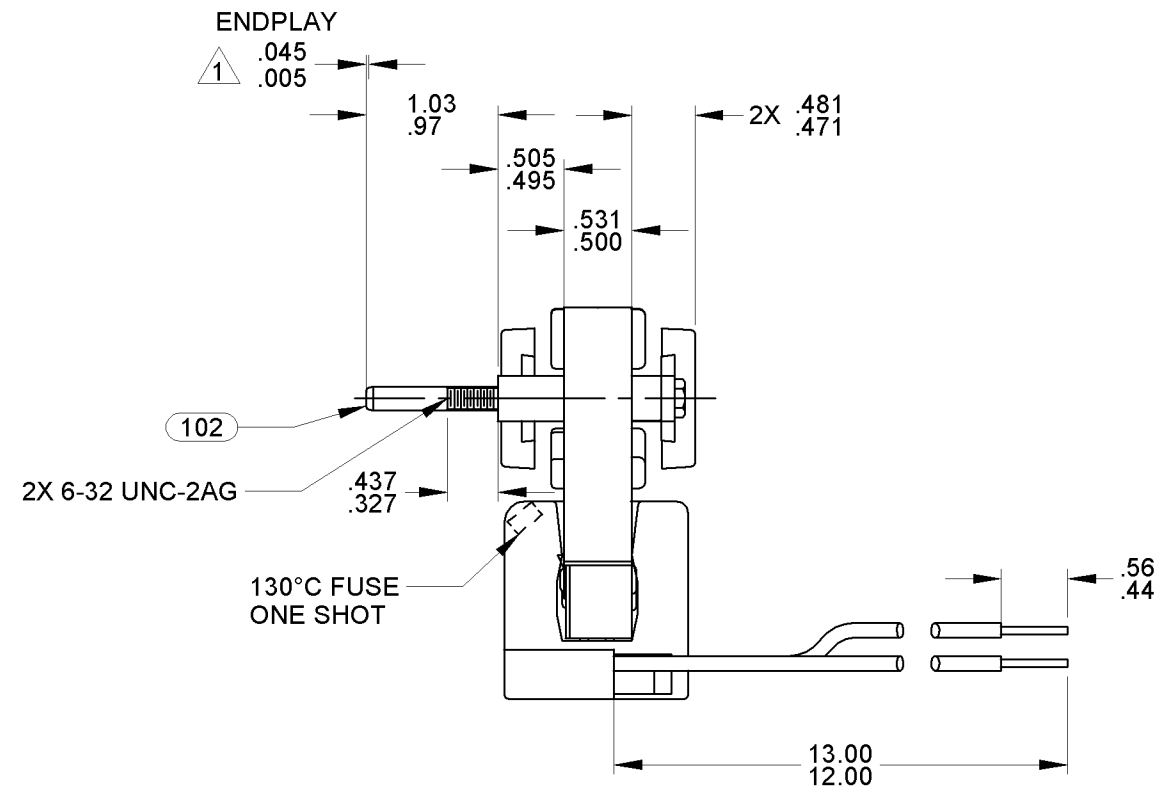
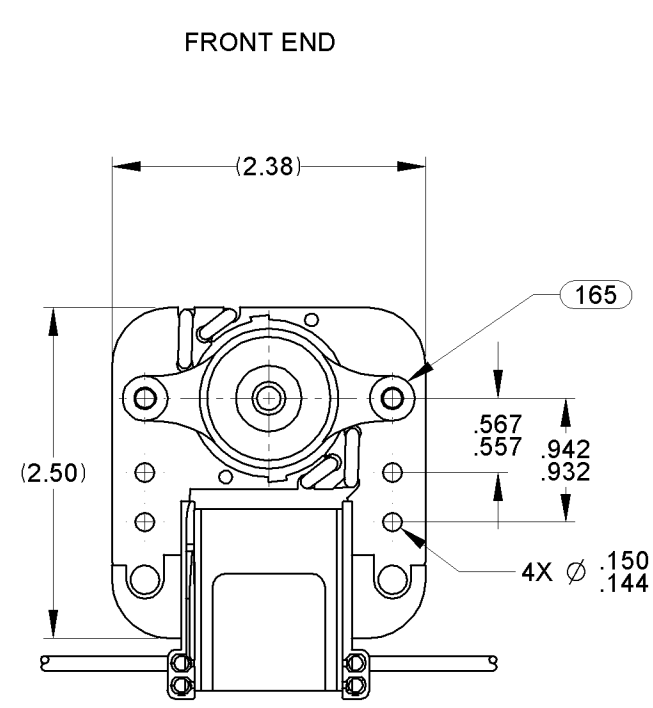


02	REVISED NOTES, REMOVED @ FROM LABEL, AND CORRECTED SCREWS PICTORIALLY.	4004493 RPT 2/9/12	03	ADDED CARTON LABEL NOTE	4005461 MLM 05/09/12	04	ADDED ENDPLAY NOTE MARKER.	4012476 MLS 5/15/2014	STANDARD TOLERANCES: ANGULAR +/- 1 DEGREE 2 PLACE DECIMAL +/- .01 3 PLACE DECIMAL +/- .005		
----	--	-----------------------	----	-------------------------	-------------------------	----	----------------------------	--------------------------	---	--	--



LEAD MATERIAL
18 GA. 105°C 2/64 INSUL.
PVC, (2) WHT

- NOTES:
- SHAFT EXTENSION TO BE MEASURED WITH ENDPLAY PULLED OUT.
 - SHIM BOTH ENDS WITH (1) PC 246 SPACER, (1) PC 247 WASHER, AND (1) PC 248 WASHER. A MINIMUM OF (1) PC 248 WASHER AGAINST BEARING FACE ON EACH END. ADJUST BACK END WITH PC 248 WASHER AS REQUIRED TO MAINTAIN SPECIFIED ENDPLAY.
 - MOTOR MUST START AT 70 VOLTS.
 - HI POT PER P.S. 88834420.
 - STATOR CORE, STATOR BAR, AND ROTOR CORE ASSEMBLIES ARE COATED WITH TWIN EMULSION.
 - PACK 6 PER CONTAINER, 648 MAX. AMOUNT PER PALLET, 12 CONTAINERS PER LAYER, 9 LAYERS PER PALLET, PACKING ASSY. 87854178 PER P.S. 88834200 AND P.S. 88834408.
 - CARTON LABELS MUST ALL FACE ONE DIRECTION TOWARD THE OPEN END OF THE PALLET. SEE P.S. 88834408.
 - NO PACKAGING TAPE OVER CARTON LABEL.

99581393 61299553

FASCO Model: K145
71581393 Assembled In Mexico

115 V 60 Hz 1/250 HP
J238-050 E64080 E48562

Max. Amb 40°C

.59 LRA T.P. B
.53 FLA 3000 RPM

UL US

FRONT SHAFT POSITION		TYPICAL PERFORMANCE AT 115 VOLTS 60 Hz											CUSTOMER: FASCO DIST.		FASCO FASCO MOTORS GROUP AC MOTOR/BLOWER DIVISION									
HORIZONTAL	UP DOWN	MOTOR SPEED	IDLE			LOADED			LOCKED			BREAK	PART NUMBER: K145	APPLICATION:	MOTOR TYPE		DRAWING NUMBER							
			R.P.M.	AMP.	WATT	IN.OZ.	R.P.M.	AMP.	WATT	IN.OZ.	AMP.				WATT	IN.OZ.		MOTOR, C - FRAME	7158 1393					
			3339	.52	23	1.04	3000	.53	25	1.80	.59	31	2.25	MOTOR WEIGHT: 1 LB 4 oz.	ENVIRONMENT: DRY									
CUSTOMER APPROVAL:														FINISH COLOR: NATURAL										
SIGNED:														DRAWN BY: M. MASON										
DATE:														DATE DRAWN: 1/30/09	B	LA	FR	A	S	C	E	B	A	REV. 04
															00	58	52	X	16	OH	5	B	0	

If Printed, this is an Uncontrolled Document.