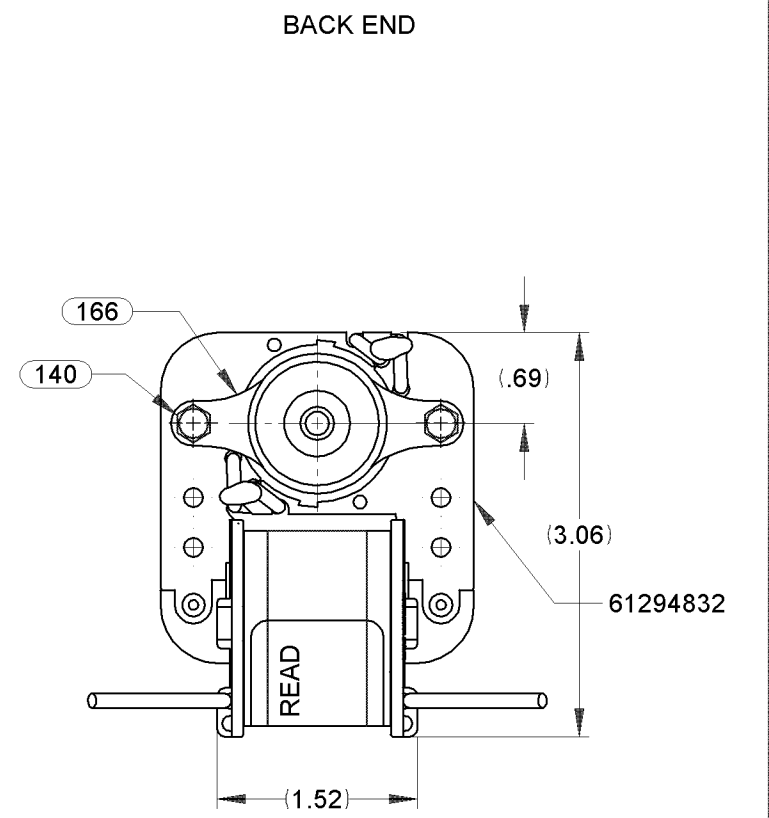
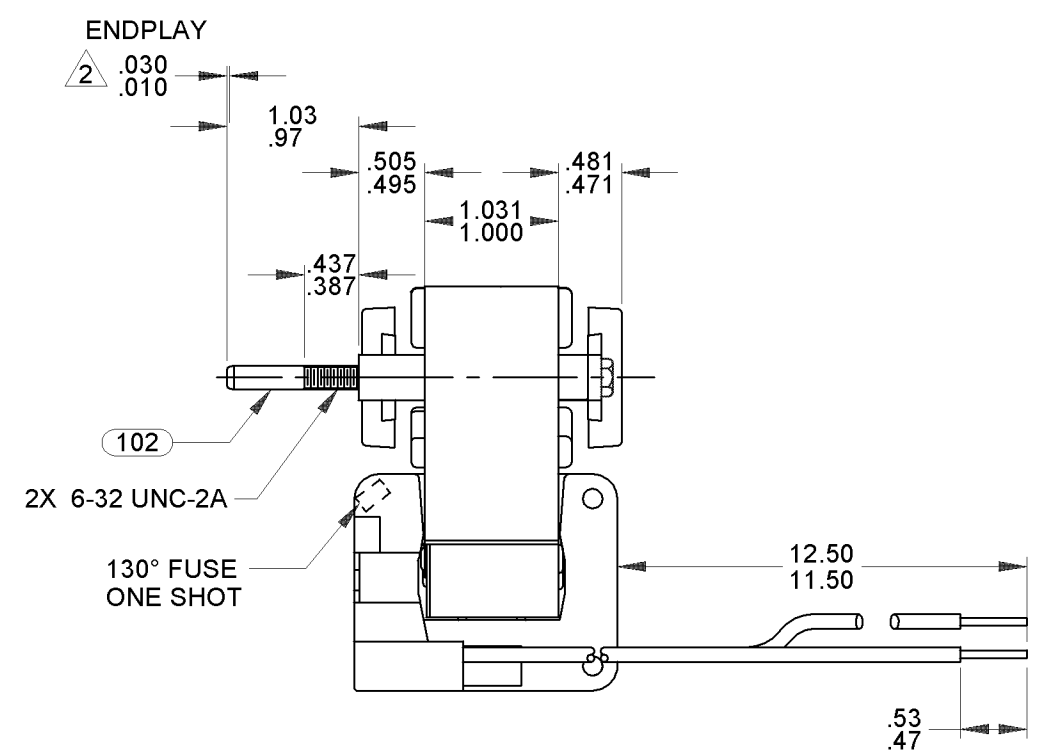
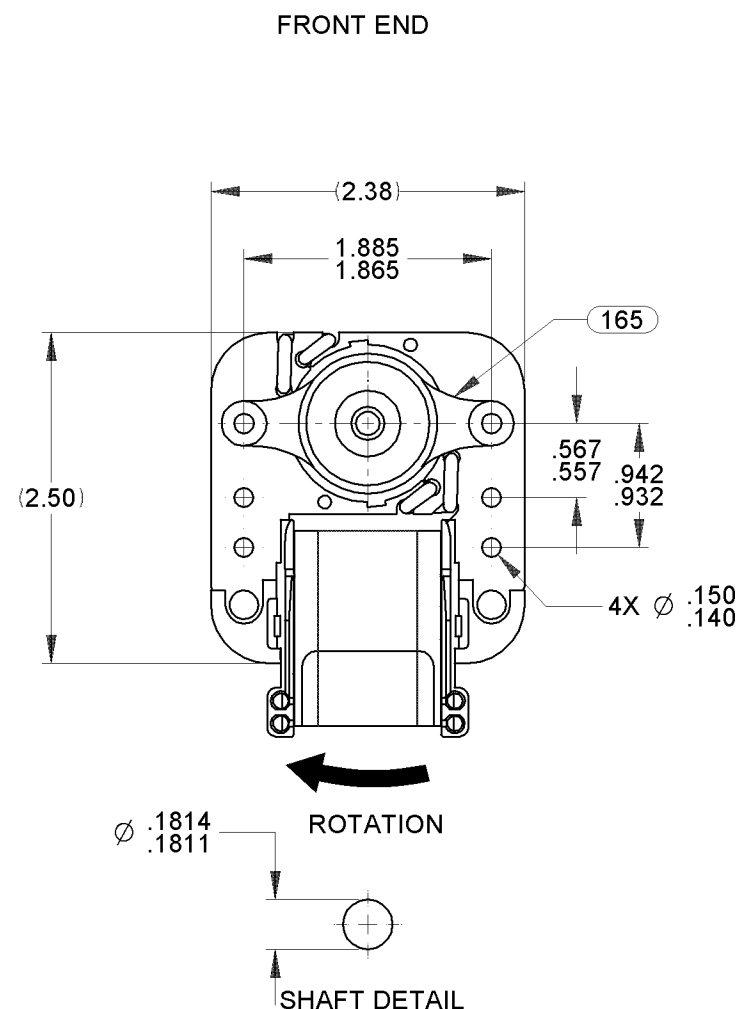


| | | | | | | | | | | | |
|----|-------------------------|--------------|----|-----------------------------------|------------------------|----|----------------------------|--------------------------|---|--|--|
| 00 | RELEASE FOR PRODUCTION. | RPT 08/27/08 | 01 | ADDED STD. AND CARTON LABEL NOTES | 4005056 MLM 3/26/12 | 02 | UPDATED NOTES TO STANDARD. | 4012634 MLS 6/10/2014 | STANDARD TOLERANCES: ANGULAR +/- 1 DEGREE 2 PLACE DECIMAL +/- .01 3 PLACE DECIMAL +/- .005 | | |
|----|-------------------------|--------------|----|-----------------------------------|------------------------|----|----------------------------|--------------------------|---|--|--|



LEAD MATERIAL
18 GA. 105°C 2/64 INSUL.
THERMO, TINNED
(2) BLK

NOTES:

- MOTOR MUST START AT 70 VOLTS.
- SHAFT EXTENSION TO BE MEASURED WITH ENDPLAY PULLED OUT.
- SHIM FRONT END WITH (1) PC 246 SPACER AND (1) PC 247 WASHER. SHIM BACK END WITH (1) PC 246 SPACER AND ADD PC 247 WASHER AS REQUIRED TO MAINTAIN REQUIRED ENDPLAY.
- PACK 6 PER CONTAINER, 648 MAX. PER PALLET, 12 CONTAINERS PER LAYER, 9 LAYERS PER PALLET. PACKING ASSY; 87854178.
- HIPOT PER P.S. 88834420.
- STATOR CORE AND STATOR BAR ASSEMBLIES ARE COATED WITH TWIN EMULSION.
- CARTON LABELS MUST ALL FACE ONE DIRECTION TOWARD THE OPEN END OF THE PALLET. SEE P.S. 88834408.
- NO PACKAGING TAPE OVER CARTON LABEL.

61294832

SAFETY WARNING
This Motor Must Be Grounded In Accordance With Local Or National Electrical Codes To Prevent Possible Injury Due To Electrical Shock

99581091 61299553

FASCO Model: K142
71581091 Assembled In Mexico

120 V 60 Hz 1/70 HP
J238-100 E64080 E48562

Max. Amb 40°C

.81 LRA T.P. CL B
.63 FLA 3000 RPM

UL US

| FRONT SHAFT POSITION | | TYPICAL PERFORMANCE AT 120 VOLTS 60 Hz | | | | | | | | | | | CUSTOMER: FASCO DIST. | | FASCO FASCO MOTORS GROUP AC MOTOR/BLOWER DIVISION | | | | | | | | | |
|----------------------|------------|--|--------|------|------|--------|--------|------|--------|--------|------|-------|-----------------------|-----------------------------|---|----|----|----|----|----------------|---|---|---|------|
| HORIZONTAL | UP DOWN | MOTOR SPEED | IDLE | | | LOADED | | | LOCKED | | | BREAK | PART NUMBER: K142 | APPLICATION: DISTRIBUTION | MOTOR TYPE | | | | | DRAWING NUMBER | | | | |
| | | | R.P.M. | AMP. | WATT | IN.OZ. | R.P.M. | AMP. | WATT | IN.OZ. | AMP. | WATT | | | IN.OZ. | B | LA | FR | A | S | C | E | B | A |
| | | | 3490 | .54 | 30 | 4.80 | 3000 | .63 | 40 | 3.66 | .81 | 49 | 6.12 | MOTOR WEIGHT: 2 LBS. | MOTOR, C - FRAME | | | | | 7158 1091 | | | | |
| CUSTOMER APPROVAL: | | | | | | | | | | | | | | ENVIRONMENT: DAMP | | | | | | | | | | |
| SIGNED: | | | | | | | | | | | | | | FINISH COLOR: NATURAL | | | | | | | | | | |
| DATE: | | | | | | | | | | | | | | DRAWN BY: RON TAYLOR | B | LA | FR | A | S | C | E | B | A | REV. |
| | | | | | | | | | | | | | | DATE DRAWN: AUGUST 27, 2008 | 00 | 58 | 52 | X | 04 | OJ | 5 | B | 0 | 02 |

If Printed, this is an Uncontrolled Document.