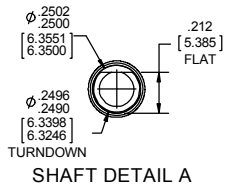
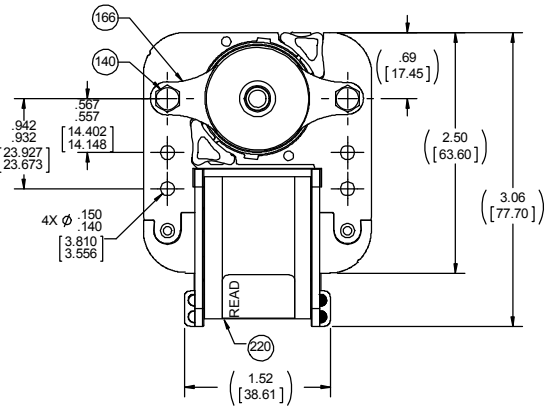
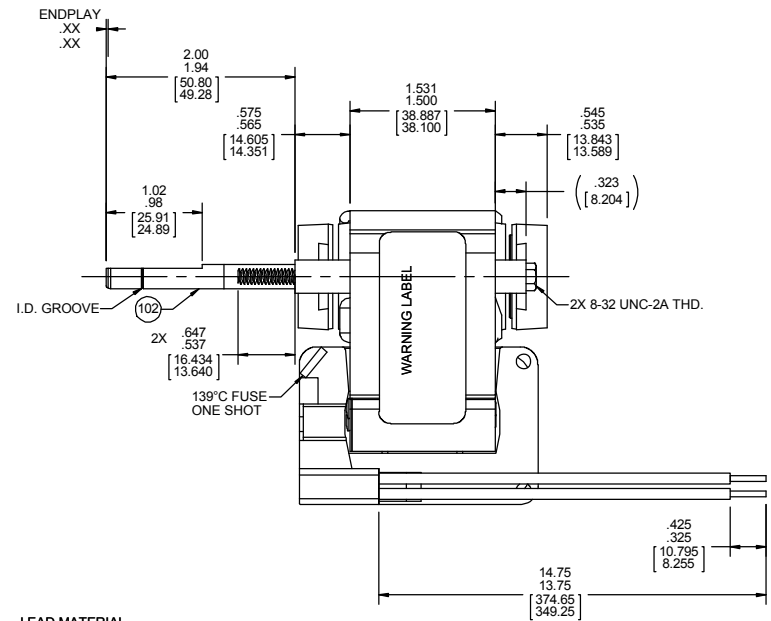
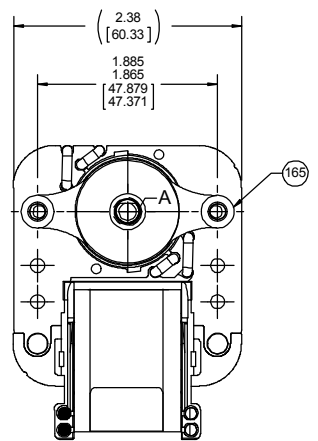


FRONT END

BACK END



LEAD MATERIAL
18 GA., 125°C, 2/64 INSUL.,
X-LINKED POLY,
(2) BLACK

- NOTES:
- SHAFT EXTENSION TO BE MEASURED WITH THE ROTOR IN A RELAXED POSITION.
 - PRESS (1) PC 452 BALL BEARING ONTO BOTH ENDS OF THE SHAFT USING THE SPI-1000 SET UP. ON THE FRONT END PLACE (1) PC 180 BEARING CUSHION BETWEEN THE BEARING AND BEARING STRAP. ON THE BACK END PLACE (1) PC 179 WAVE SPRING NEXT TO BEARING. PLACE (1) PC 287 STEEL WASHER BETWEEN WAVE SPRING AND BEARING CUSHION. PLACE (1) PC 180 BEARING CUSHION BETWEEN STEEL WASHER AND BEARING STRAP. NOTE PC 179 WAVE SPRING IS ON THE BACK END.
 - STATOR ASSEMBLY COMPLETE IS VARNISHED. ROTOR CORE ASSEMBLY IS COATED WITH TWIN EMULSION.
 - MOTOR MUST START AT 70 VOLTS.
 - HI POT PER 88834420
 - PACK 1 UNIT PER CONTAINER, 91 CONTAINERS PER LAYER, 6 LAYERS PER PALLET, 546 MAX. AMOUNT PER PALLET. PLACE FLAT PAD ON PALLET, BETWEEN EACH LAYER AND ON TOP OF PALLET LOAD.
 - CARTON LABELS MUST ALL FACE ONE DIRECTION TOWARD THE OPEN END OF THE PALLET. SEE 88834408
 - NO PACKAGING TAPE OVER CARTON LABEL.

61305568

99583117

61299553

SAFETY WARNING
This motor must be grounded in accordance with local or national electrical codes to prevent possible injury due to electrical shock.

AVERTISSEMENT DE SECURITE
Ce moteur doit être fondée sur conformément à la réglementation locale ou national électrique codes pour prévenir d'éventuelles blessures en raison de choc électrique.

FASCO Model: K1322
71583117

Assembled in Mexico

J238-150 E64080 E48562
115 V 60 Hz 1.25 LRA .98 FLA
Max Amb: 40°C Ref. 1/40 HP

T.P. B 3000 RPM AO

CUSTOMER:	FASCO DIST.	APPLICATION:	VENT, DISTRIBUTOR
CUSTOMER PN:	K1322	MOTOR WEIGHT:	2.6 LBS
	UP	ENVIRONMENT:	
		MOTOR TYPE	REFERENCE SAMPLE
		MOTOR, C-FRAME	
		B LA FR A S C E B A	
		00 58 52 X 06 CP 5 0 0	
		TYPICAL PERFORMANCE AT 115 VOLTS 60 HZ	
		IDLE	LOADED
			LOCKED
			BREAK
MOTOR SPEED	RPM	AMP	WATT
	3520	.74	43
		8.5	3000
		.98	63
		3.8	1.25
		67	8.9

DRAWING REVISION	AA	REVISION BY	JMG	DATE	02/13/2019	TOLERANCES UNLESS OTHERWISE SPECIFIED:	DRAWN BY	JMG
ECO	ECO-0161685	APPROVED BY	PLA	DATE	02/13/2019	DEC. INCH mm ANGLE		
ECO DESCRIPTION	RELEASED FOR PRODUCTION					.X ±0.1 [2.5] ±1°		
						.XX ±0.01 [0.25]		
						.XXX ±0.005 [0.127]		
						.XXXX ±0.0005 [±0.0127]		
						REMOVE BURRS & BREAK SHARP EDGES: .0031 [0.078] X 45° CORNER FILLETS: R.02 [.51]		
						MACHINED SURFACES: .125 / 3.2 INCH/ mm SHOWN IN [BRACKETS]		
						THIRD ANGLE PROJECTION		
						SIZE [DRAWING NUMBER]		
						C 71583117		
						PROCESS/FINISH NATURAL		
						SHEET 1 OF 1		