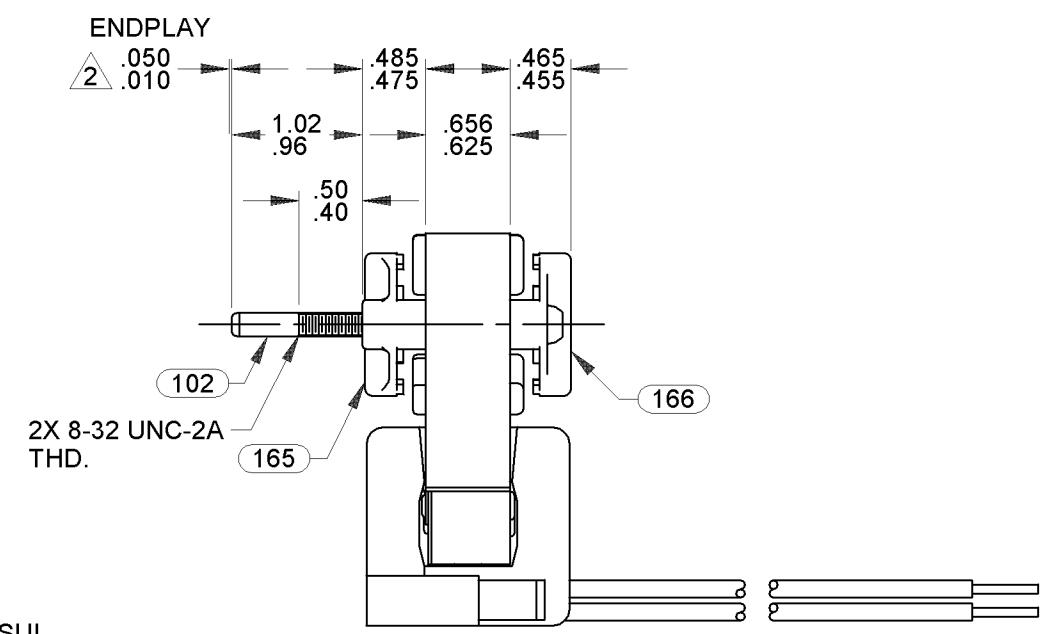
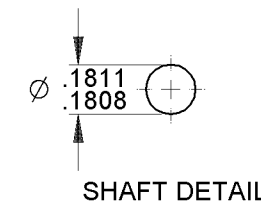
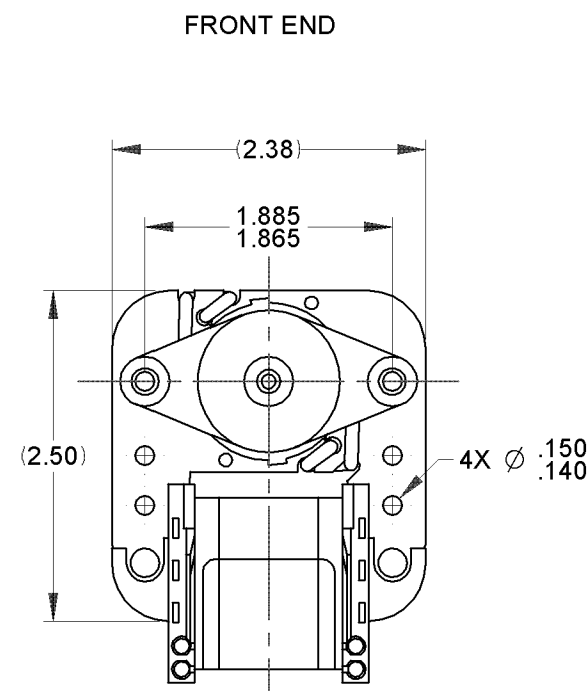
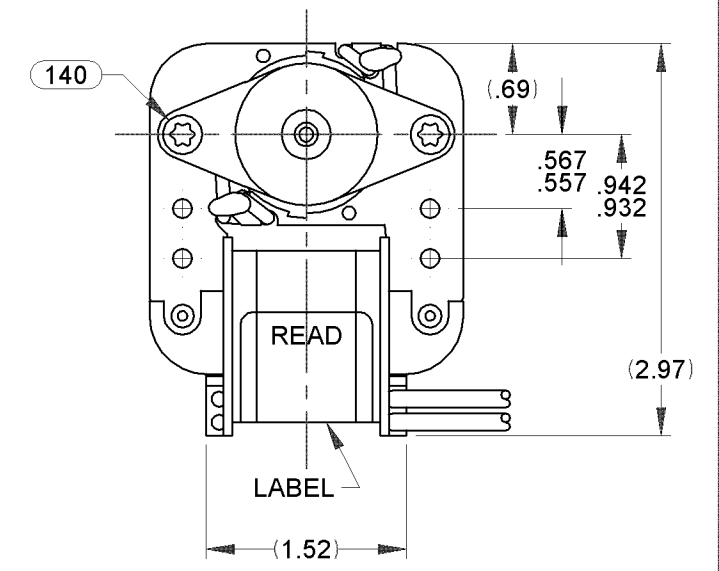


00	RELEASE FOR PRODUCTION.	SDM 10/07/08	01	REVISED WINDING AND ADDED CARTON LABEL NOTES	4004849 MLM 03/09/12	03	ADDED ENDPLAY NOTE MARKER.	4012833 MLS 7/21/2014	STANDARD TOLERANCES: ANGULAR +/- 1 DEGREE 2 PLACE DECIMAL +/- .01 3 PLACE DECIMAL +/- .005		
----	-------------------------	--------------	----	--	-------------------------	----	----------------------------	--------------------------	---	--	--



LEAD MATERIAL  
18 GA. 125°C 2/64 INSUL.  
X-LINKED POLY. (2) BLK  
14.00/12.00 IN. LONG  
.56/.44 IN. STRIP



- NOTES:
- MOTOR HAS 130°C ONE SHOT FUSE.
  - SHAFT EXTENSION TO BE MEASURED WITH ENDPLAY PUSHED IN.
  - SHIM FRONT END WITH PC 246 SPACER. SHIM BACK END WITH PC 246 SPACER AND PC 247 WASHER.
  - ADD PC 247 WASHER TO FRONT END ONLY IF REQUIRED TO MAINTAIN SPECIFIED ENDPLAY.
  - MOTOR MUST START AT 70 VOLTS.
  - PACK 6 PER CONTAINER, 576 MAX PER PALLET, 12 CONTAINERS PER LAYER, 8 LAYERS PER PALLET.
  - CARTON LABELS MUST ALL FACE ONE DIRECTION TOWARD THE OPEN END OF THE PALLET. SEE P.S. 88834408.
  - NO PACKAGING TAPE OVER CARTON LABEL.

61299553      99581194      00464282

FRONT SHAFT POSITION		TYPICAL PERFORMANCE AT 115 VOLTS 60 Hz											CUSTOMER: FASCO DIST.		FASCO MOTORS GROUP AC MOTOR/BLOWER DIVISION						
HORIZONTAL	MOTOR SPEED	IDLE			LOADED			LOCKED			BREAK	APPLICATION:	CONFIDENTIAL: DO NOT DUPLICATE OR DISCLOSE TO THIRD PARTIES WITHOUT WRITTEN PERMISSION OF FASCO MOTORS GROUP, AC MOTOR/BLOWER DIVISION.								
		R.P.M.	AMP.	WATT	IN.OZ.	R.P.M.	AMP.	WATT	IN.OZ.	AMP.	WATT		IN.OZ.	MOTOR TYPE	DRAWING NUMBER						
UP	3490	.42	20	3.11	3000	.47	27	1.88	.51	31	3.62	MOTOR WEIGHT: 1.5 LBS	MOTOR, C - FRAME	7158 1194							
DOWN												ENVIRONMENT: DRY	REV. 02								
CUSTOMER APPROVAL:												FINISH COLOR: NATURAL	B	LA	FR	A	S	C	E	B	A
SIGNED:												DRAWN BY: SDM	00	58	52	X	01	ON	5	B	0
DATE:												DATE DRAWN: 10/07/2008									

If Printed, this is an Uncontrolled Document.