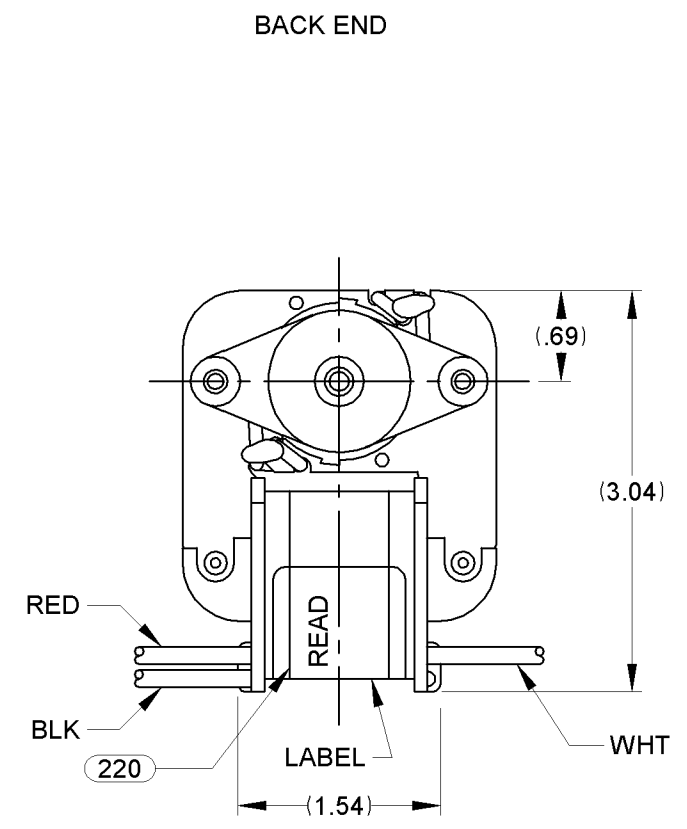
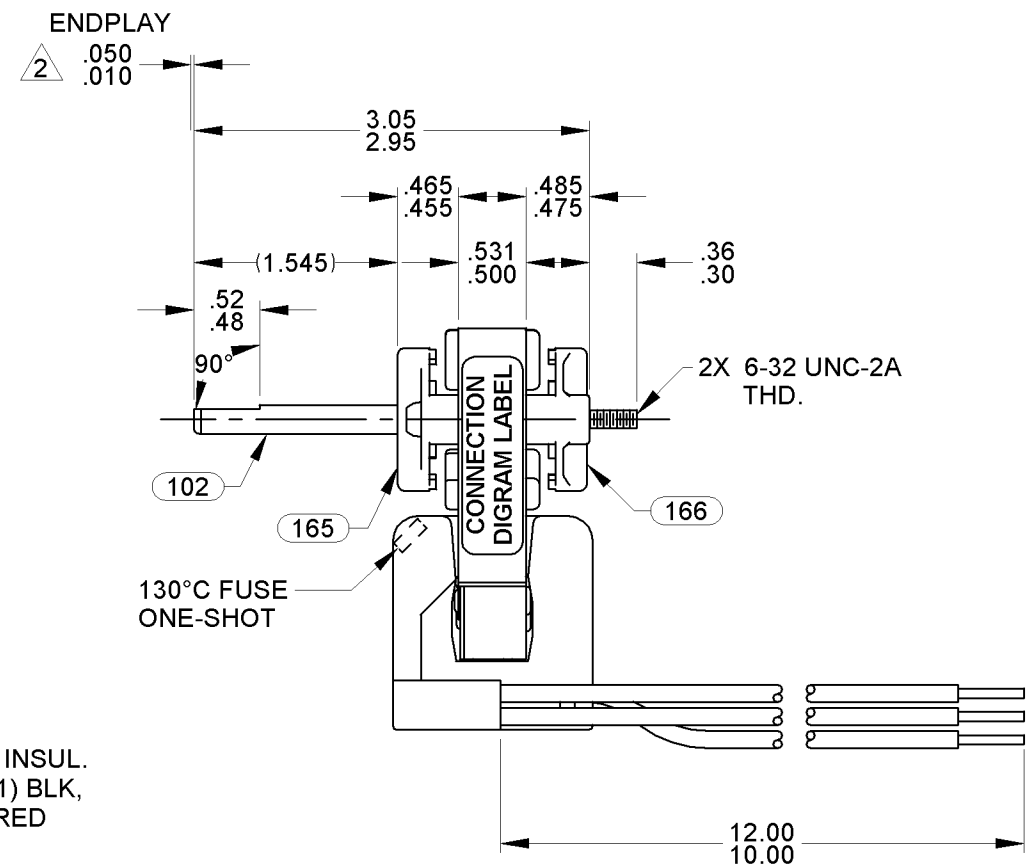
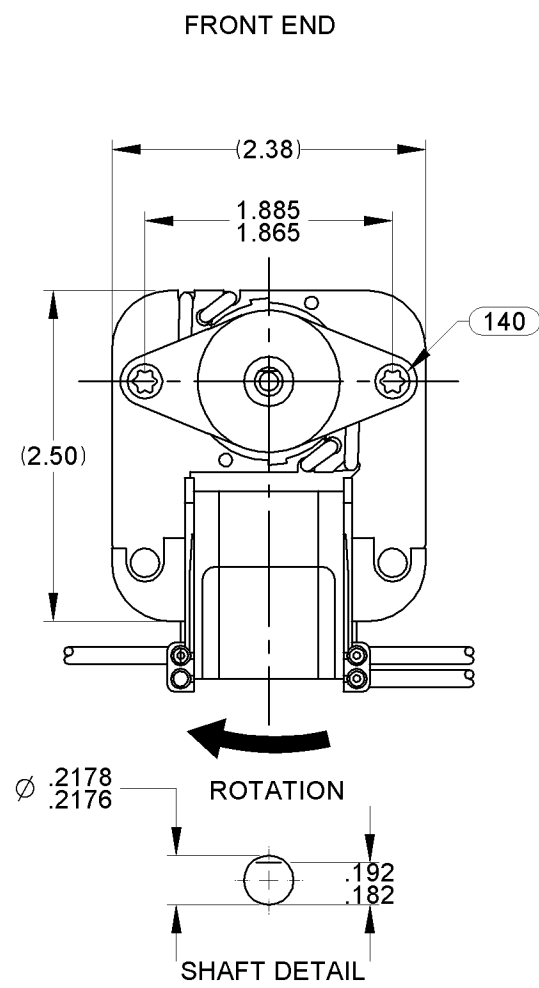


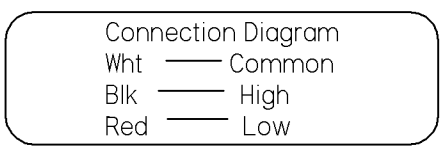
01	REVISED N/P LABEL, WHITE LEAD LOCATION, AND REVISED DRAWING TO CLARIFY.	RPT 04/06/10	02	ADDED CARTON LABEL NOTES	4004962 MLM 3/19/12	03	UPDATED ROTOR AND SHAFT PRINT.	4012448 MLS 5/12/2014	STANDARD TOLERANCES: ANGULAR +/- 1 DEGREE 2 PLACE DECIMAL +/- .01 3 PLACE DECIMAL +/- .005		
----	---	--------------	----	--------------------------	------------------------	----	--------------------------------	--------------------------	---	--	--



LEAD MATERIAL
18 GA. 125°C 2/64 INSUL.
X-LINKED POLY. (1) BLK,
(1) WHT, AND (1) RED
.56/.44 IN. STRIP

- NOTES:
- MOTOR HAS A 130°C ONE SHOT FUSE.
 - SHAFT EXTENSION TO BE MEASURED WITH ENDPLAY PUSHED IN.
 - SHIM FRONT END WITH (1) PC 246 SPACER. SHIM BACK END WITH (1) PC 246 SPACER AND (1) PC 247 WASHER.
 - ADD PC 247 WASHER TO FRONT END ONLY IF REQUIRED TO MAINTAIN SPECIFIED ENDPLAY.
 - MOTOR MUST START AT 70 VOLTS.
 - HI POT PER P.S. 88834420.
 - STATOR CORE AND STATOR BAR ASSEMBLIES ARE VARNISHED.
 - ROTOR CORE ASSEMBLY IS COATED WITH TWIN EMULSION.
 - PACK 6 PER CONTAINER, 648 MAX PER PALLET, PACKING ASSY. 87854408, 12 CONTAINERS PER LAYER, 9 LAYERS PER PALLET, PER P.S. 88834200.
 - CARTON LABELS MUST ALL FACE ONE DIRECTION TOWARD THE OPEN END OF THE PALLET. SEE P.S. 88834408.
 - NO PACKAGING TAPE OVER CARTON LABEL.

61304338



99581233 61299553

FASCO Model: K120
71581233 Assembled In Mexico

120 V 60 Hz 1/260 HP AO
J238-050 E64080 E48562
HIGH .58 LRA .50 FLA 3000 RPM
LOW .36 LRA .29 FLA
Max. Amb 40°C T.P. B

FRONT SHAFT POSITION		TYPICAL PERFORMANCE AT 120 VOLTS 60 Hz											CUSTOMER: FASCO DIST.		<p>CONFIDENTIAL: DO NOT DUPLICATE OR DISCLOSE TO THIRD PARTIES WITHOUT WRITTEN PERMISSION OF FASCO MOTORS GROUP, AC MOTOR/BLOWER DIVISION.</p> <p>MOTOR TYPE: MOTOR, C - FRAME DRAWING NUMBER: 7158 1233</p>									
HORIZONTAL		MOTOR SPEED	IDLE			LOADED			LOCKED			BREAK	APPLICATION:	MOTOR WEIGHT: 1.5 LBS										
			R.P.M.	AMP.	WATT	IN.OZ.	R.P.M.	AMP.	WATT	IN.OZ.	AMP.	WATT			IN.OZ.									
CUSTOMER APPROVAL:		HIGH	3294	.48	24	1.34	3000	.50	27	2.22	.58	34	2.87	MOTOR WEIGHT: 1.5 LBS		ENVIRONMENT: DRY		FINISH COLOR: NATURAL		DRAWN BY: SDM		DATE DRAWN: 10/03/2008		
SIGNED:		LOW	3255	.28	15	0.85	3000	.29	17	1.45	.36	22	1.91	MOTOR WEIGHT: 1.5 LBS		ENVIRONMENT: DRY		FINISH COLOR: NATURAL		DRAWN BY: SDM		DATE DRAWN: 10/03/2008		
DATE:														MOTOR WEIGHT: 1.5 LBS		ENVIRONMENT: DRY		FINISH COLOR: NATURAL		DRAWN BY: SDM		DATE DRAWN: 10/03/2008		
														B	LA	FR	A	S	C	E	B	A	REV.	
														00	58	52	X	16	OD	5	A	0	03	

If Printed, this is an Uncontrolled Document.