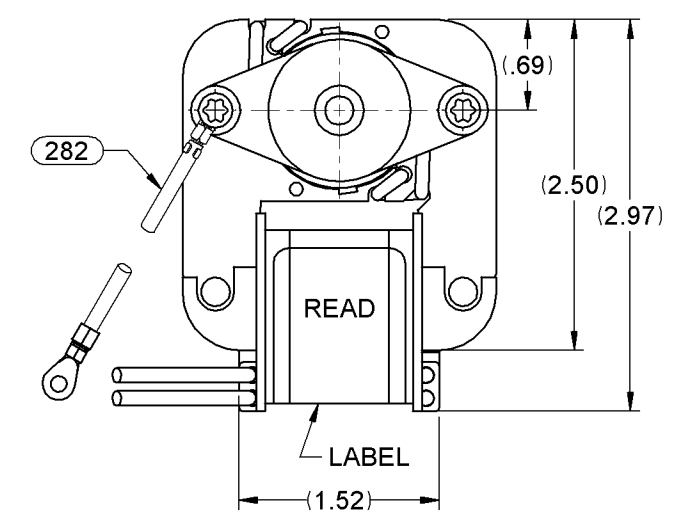
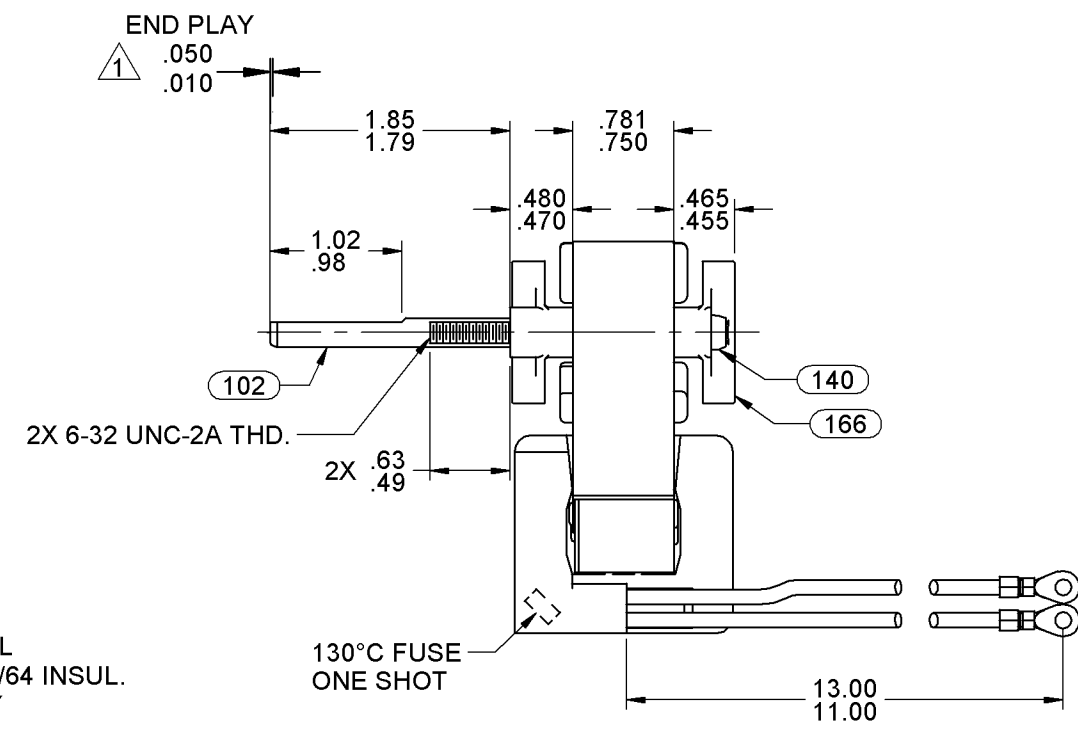
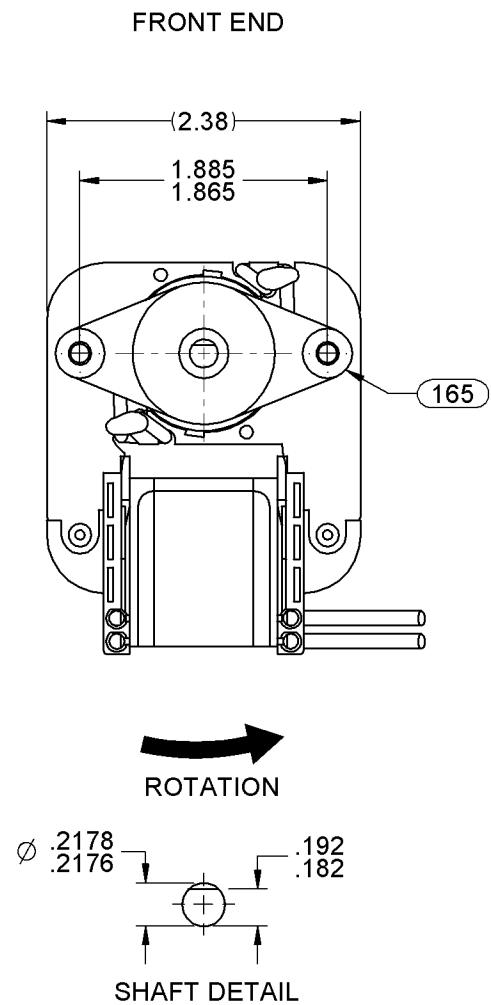


01	ADDED CARTON LABEL NOTES AND STD. NOTES	4005087 MLM 3/27/12	02	UPDATED TO CURRENT STANDARDS.	4009853 JMC 07/26/13	03	PICTORIALLY CORRECTED ENDPLAY.	4012278 MLS 4/22/2014	STANDARD TOLERANCES: ANGULAR +/- 1 DEGREE 2 PLACE DECIMAL +/- .01 3 PLACE DECIMAL +/- .005	
----	-----------------------------------------	------------------------	----	-------------------------------	-------------------------	----	--------------------------------	--------------------------	-----------------------------------------------------------------------------------------------	--



LEAD MATERIAL
18 GA. 125°C. 2/64 INSUL.
X-LINKED POLY
(2) BLK,
W/RING TERM. 89039009
AMP 40955

GROUND LEAD
18 GA. 105°C. 2/64 INSUL.
THERMO, (1) GRN/YEL
6.00/5.00 IN. LONG
W/RING TERM. 89039009
AMP 40955

- NOTES:
- SHAFT EXTENSION MEASURED WITH END PLAY PULLED OUT.
 - SHIM FRONT END WITH (1) PC 246 SPACER AND (1) PC 247 WASHER, SHIM BACK END WITH (1) PC 246 SPACER AND ADD PC 247 WASHER TO BACK END ONLY IF REQUIRED TO MAINTAIN SPECIFIED END PLAY.
 - ROTOR CORE, STATOR CORE AND STATOR BAR ASSEMBLIES ARE COATED WITH TWIN EMULSION.
 - MOTOR MUST START AT 70 VOLTS.
 - HIPOT PER P.S. 88834420.
 - PACK 6 PER CONTAINER, 12 CONTAINERS PER LAYER, 9 LAYERS PER PALLET, 648 MAX. PER PALLET. PACKING ASSY. 87854178 PER P.S. 88834408.
 - CARTON LABELS MUST ALL FACE ONE DIRECTION TOWARD THE OPEN END OF THE PALLET. SEE P.S. 88834408.
 - NO PACKAGING TAPE OVER CARTON LABEL.

61299553 99581213

FASCO Model: K115

7158 1213 J238-075

115 V 60 Hz
1/100 HP 0.73 LRA
0.57 FLA 3000 RPM
Max Amb 40° C AO
E64080 E48562
Class B TP

Assembled in Mexico

SAFETY WARNING
This Motor Must Be Grounded in Accordance With Local Or National Electrical Codes to Prevent Possible Injury Due To Electrical Shock

FRONT SHAFT POSITION		TYPICAL PERFORMANCE AT 115 VOLTS 60 Hz											CUSTOMER: FASCO DIST.		FASCO MOTORS GROUP AC MOTOR/BLOWER DIVISION									
HORIZONTAL	UP DOWN	MOTOR SPEED	IDLE			LOADED			LOCKED			BREAK	APPLICATION: ELECTRIC HEAT	MOTOR WEIGHT: 1.50 LBS.	MOTOR TYPE					DRAWING NUMBER				
			R.P.M.	AMP.	WATT	IN.OZ.	R.P.M.	AMP.	WATT	IN.OZ.	AMP.	WATT			IN.OZ.	MOTOR, C - FRAME					7158 1213			
			3454	.50	25	3.76	3000	.57	32	2.81	.73	39	4.90	MOTOR WEIGHT: 1.50 LBS.										
CUSTOMER APPROVAL:														ENVIRONMENT: DAMP										
SIGNED:														FINISH COLOR: NATURAL										
DATE:														DRAWN BY: S. DALTON										
														DATE DRAWN: 9-30-08	B	LA	FR	A	S	C	E	B	A	REV. 03

If Printed, this is an Uncontrolled Document.