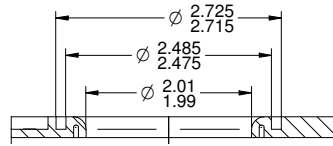
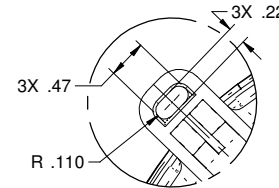


NOTES:

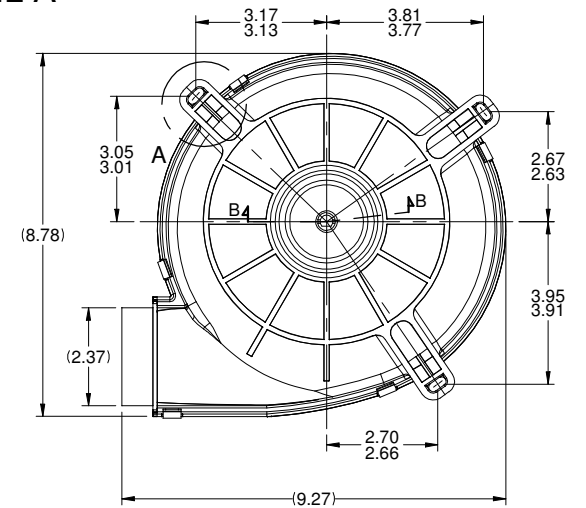
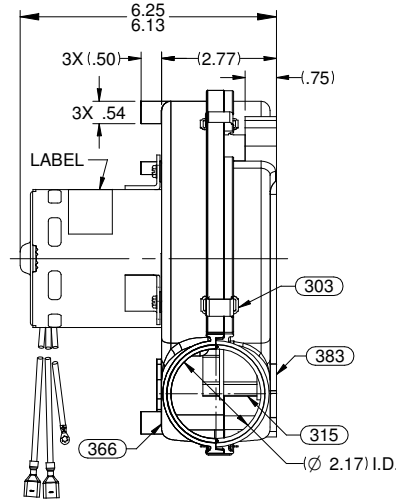
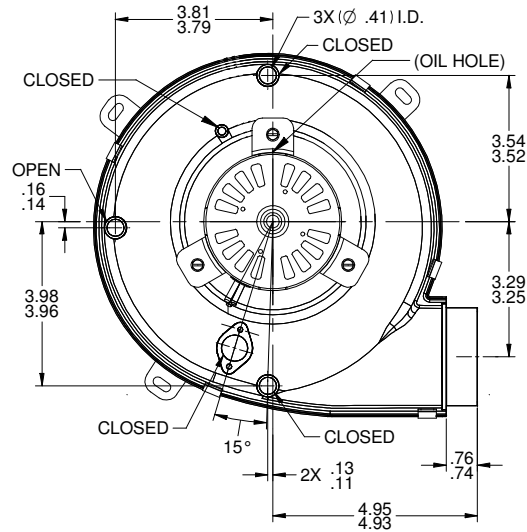
1. ALL UNITS TO BE CHECKED 100% FOR VIBRATION.
2. VIBRATION IS TO BE CHECKED WITH MOTOR DOWN, MOTOR SIDE OF HOUSING RESTING ON FOAM PAD PRIOR TO ASSEMBLY.
3. CHECK VIBRATION AT THE CENTER OF EXHAUST 3/4" FROM END OF EXHAUST WITH HAND HELD ACCELEROMETER.
4. VIBRATION IS NOT TO EXCEED 1.8 MILS ON THE 10X SCALE.
5. PACK 1 PER CONTAINER, 12 CONTAINERS PER LAYER, 3 LAYERS PER PALLET, 36 MAX. AMT. PER PALLET. PACKING ASSY; 87854866. PER P.S. 88834408 AND 88834200
6. CARTON LABELS MUST ALL FACE ONE DIRECTION TOWARD THE OPEN END OF THE PALLET. SEE P.S. 88834408.
7. NO PACKAGING TAPE OVER CARTON LABEL.



SECTION B-B
2:1



DETAIL A



APPLICATION	GAS FURNACE									
	B	LA	FR	A	S	C	E	B	A	
	PK	21	33	F	05	DK	5	3	0	
	THERMALLY PROTECTED CLASS "B" INSULATION 416 SS SHAFT									
CUSTOMER	FDC									
CUSTOMER PART NO.	D9620									

LEAD MATERIAL
18 GA. 125°C 4/64 INSUL.
EPDM, BLK, WHT,
20.00/18.00 IN. LONG
W/ FSPADE TERMS.
89034025
AMP 2-520263-2

GROUND LEAD
18 GA. 125°C 2/64 INSUL.
X-LINKED POLY, GRN/YEL
16.00/14.00 IN LONG.
W/ RING TERM. 89020157
AMP 350436-2

TYPICAL PERFORMANCE TEST DATA
WITH 1.25" INLET RESTRICTOR

ECO. NO.	REV.	DATE	APPROVAL	AT 115 VOLTS 60 HZ.			APPROVALS		DATE
				R.P.M.	WATTS	AMPS	DRAWN		
4010847	00	11/25/2013	MLM/JMC	3280	113	1.55	MLM	11/25/2013	
0060010	01	9/25/2014	KSA/MLM				JMC	11/25/2013	
0063514	02	10/27/2014	MLS/PLA						
BLOWER WEIGHT LBS.				END PLAY .050/010			FINISH COLOR BLOWER-NATURAL MOTOR-BLACK		

UNLESS OTHERWISE SPECIFIED DIMENSIONS ARE IN INCHES TOLERANCES ARE:
FRACTIONS ± 1/16 DECIMALS .01 ANGLES ± 1°
XX ± .01
XXX ± .005

FASCO FASCO MOTORS GROUP
AC MOTOR/BLOWER DIVISION

CONFIDENTIAL: DO NOT DUPLICATE OR DISCLOSE TO THIRD PARTIES WITHOUT WRITTEN PERMISSION OF FASCO MOTORS GROUP, AC MOTOR/BLOWER DIVISION.

TITLE: **BLOWER ASSEMBLY**

SIZE: **B** DWG. NO.: 7021 12758 REV.: 02

DO NOT SCALE DRAWING SHEET 1 OF 2