

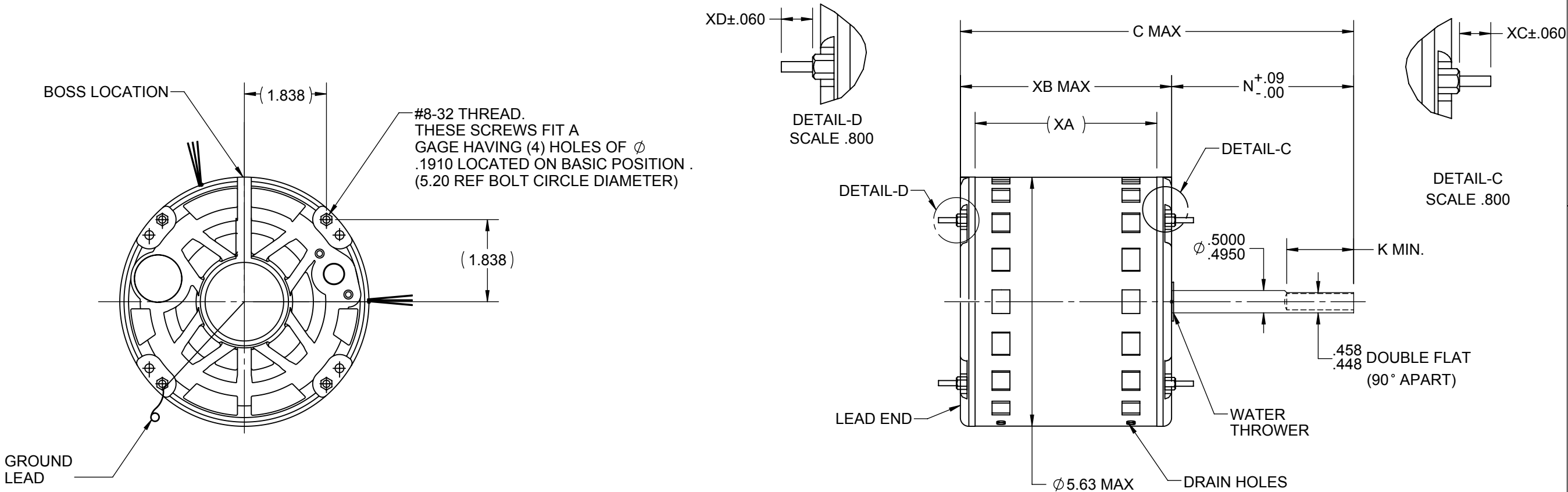
4

3

2

1

S.NO	CONNECTION	COLOR	EXIT TYPE	EXIT LOC. (VIEWING LE)	GAGE	MATERIAL	WALL THK.	LENGTH	TERMINATION	NAMEPLATE DATA	
										MODEL	5KCP39LFBB33S
1	COMMON LEAD	WHITE	12 CU IN CBOX HOLE	3:00	18	THERMOPLASTIC	4/64	37.00	.50 BWS	CUST. P/N	D960
2	REV LEAD	YELLOW	SHELL NOTCH	11:20	18	EPDM	2/64	4.00	.25 MALE ISQC	HP	1/3
3	CAPACITOR LEAD	BROWN	12 CU IN CBOX HOLE	3:00	18	THERMOPLASTIC	4/64	37.00	.25 FQC	RPM	825
4	REV LEAD	ORNAGE	SHELL NOTCH	11:20	18	EPDM	2/64	4.00	.25 MALE ISQC	VOLTS	460
5	CAPACITOR LEAD	BRN/WHT	12 CU IN CBOX HOLE	3:00	18	THERMOPLASTIC	4/64	37.00	.25 FQC	HZ	60
6	REV LEAD	BROWN	SHELL NOTCH	11:20	18	EPDM	2/64	4.00	.25 FISQC LO INS FOR	SPEEDS	1
7	HIGH SPEED LEAD	BLACK	12 CU IN CBOX HOLE	3:00	18	THERMOPLASTIC	4/64	37.00	.50 BWS	AMPS	1.30
8	REV LEAD	PURPLE	SHELL NOTCH	11:20	18	EPDM	2/64	4.00	.25 FISQC LO INS FOR	CAP. REQ'D-D1	5.0 µfd/370 Volts
9	GROUND LEAD	GRN-YEL	CLAMP SCREW	7:30	18	THERMOPLASTIC	2/64	12.00	# 10 SERR EYELET	CAP. REQ'D-D2	N/R
										CONN.DRW#	NP24X327691
										ROTATION	CCW (VIEWED FROM LE)



NOTE:

- 1) DIMENSIONS SHOWN ARE NOMINAL UNLESS OTHERWISE SPECIFIED.
- 2) NAME PLATE LABEL LOCATION :360° - **SHELL CENTER** - **READ FROM LE.**

VENTILATION SYSTEM	
SHELL VENTS	OPEN
ENDSHIELD (OPP.LEAD END)	CLOSED
ENDSHIELD (LEAD END)	OPEN

DRAWING REVISION A	REVISION BY MVG	DATE 05/12/2014
ECO ECO-0051160	APPROVED BY BN	DATE 05/12/2014
ECO DESCRIPTION GROUND LEAD CHANGED TO 7:30		
COPYRIGHT REGAL BELOIT AMERICA, INC. ALL RIGHTS RESERVED PROPRIETARY AND CONFIDENTIAL INFORMATION - THIS DOCUMENT IS THE PROPERTY OF REGAL BELOIT AMERICA, INC. ("OWNER") AND CONTAINS OWNER'S PROPRIETARY INFORMATION. ANY PERSON, CORPORATION OR OTHER FIRM RECEIVING IT IS DEEMED, BY RECEIVING IT, TO AGREE THAT IT, AND/OR ANY PART OF IT, SHALL NOT BE DISCLOSED TO ANY PERSON, CORPORATION OR OTHER ENTITY, DUPLICATED, AND/OR USED, EXCEPT AS EXPRESSLY APPROVED IN WRITING IN ADVANCE BY OWNER. THIS DOCUMENT SHALL BE RETURNED TO OWNER UPON REQUEST. IT MAY BE SUBJECT TO CERTAIN RESTRICTIONS UNDER APPLICABLE EXPORT CONTROL LAWS AND REGULATIONS.		

TOLERANCES UNLESS OTHERWISE SPECIFIED:			
DEC.	INCH	mm	ANGLE
.X	\pm 0.1	[\pm 2.5]	\pm 7° 30"
.XX	\pm 0.03	[\pm 0.76]	
.XXX	\pm 0.005	[\pm 0.127]	
.XXXX	\pm 0.0005	[\pm 0.0127]	
REMOVE BURRS & BREAK SHARP			
EDGES: .003/.015 [.076/.381]			
CORNER FILLETS: .02 [.51]			
MACHINED SURFACES: 200 INCH 5.1/mm			
mm SHOWN IN [BRACKETS]			

DRAWN BY MVG	DATE 05/12/2014
APPROVED BY BN	DATE 05/12/2014
REFERENCE	
THIRD ANGLE PROJECTION	

REGAL ™ Regal Beloit America, Inc.			
DESCRIPTION OUTLINE (CUSTOMER NAME: FASCO IND.)			
MATERIAL		PROCESS/FINISH	
SIZE B	DRAWING NUMBER 5KCP39LFBB33S	SHEET 1 OF 1	