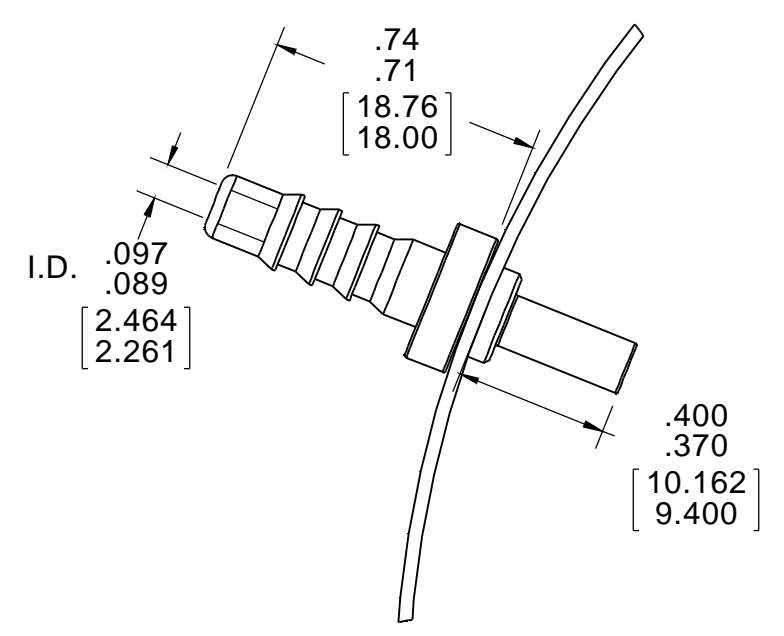


- NOTES:
1. STATIC TAP TO BE TIGHT AND SECURELY FASTENED.
  2. INSPECTION TEST FIXTURE ID REQUIRED.
  3. STATIC TAP READING IS TO BE -1.44 MINIMUM CORRECTED TO STANDARD AIR (0.075 LB/FT<sup>3</sup>) WITH A 1 5/16" INLET RESTRICTOR.
  4. PACK 1 PER CONTAINER, 64 MAX. PER PALLET, PACKING ASSY. 87854335, 16 CONTAINERS PER LAYER, 4 LAYERS PER PALLET P.S. 88834200.
  5. NO PACKING TAPE OVER CARTON LABEL.
  6. CARTON LABELS MUST ALL FACE ONE DIRECTION TOWARD THE OPEN END OF THE PALLET, SEE P.S. 88834408.
  7. PLACE FILLER PAD ON PALLET, 1 BETWEEN EACH LAYER AND 1 ON TOP OF PALLET LOAD BEFORE STRETCH WRAPPING.

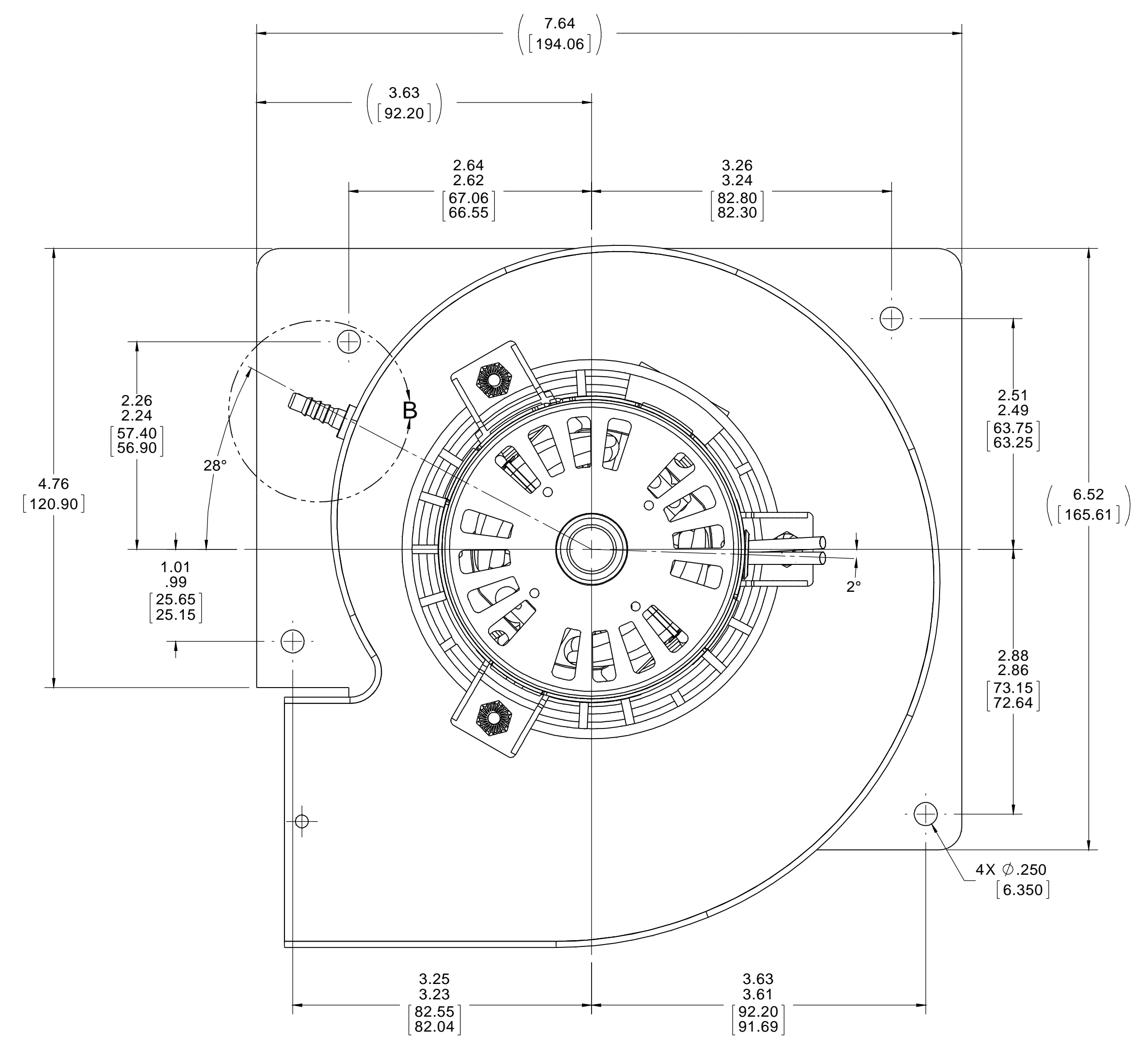
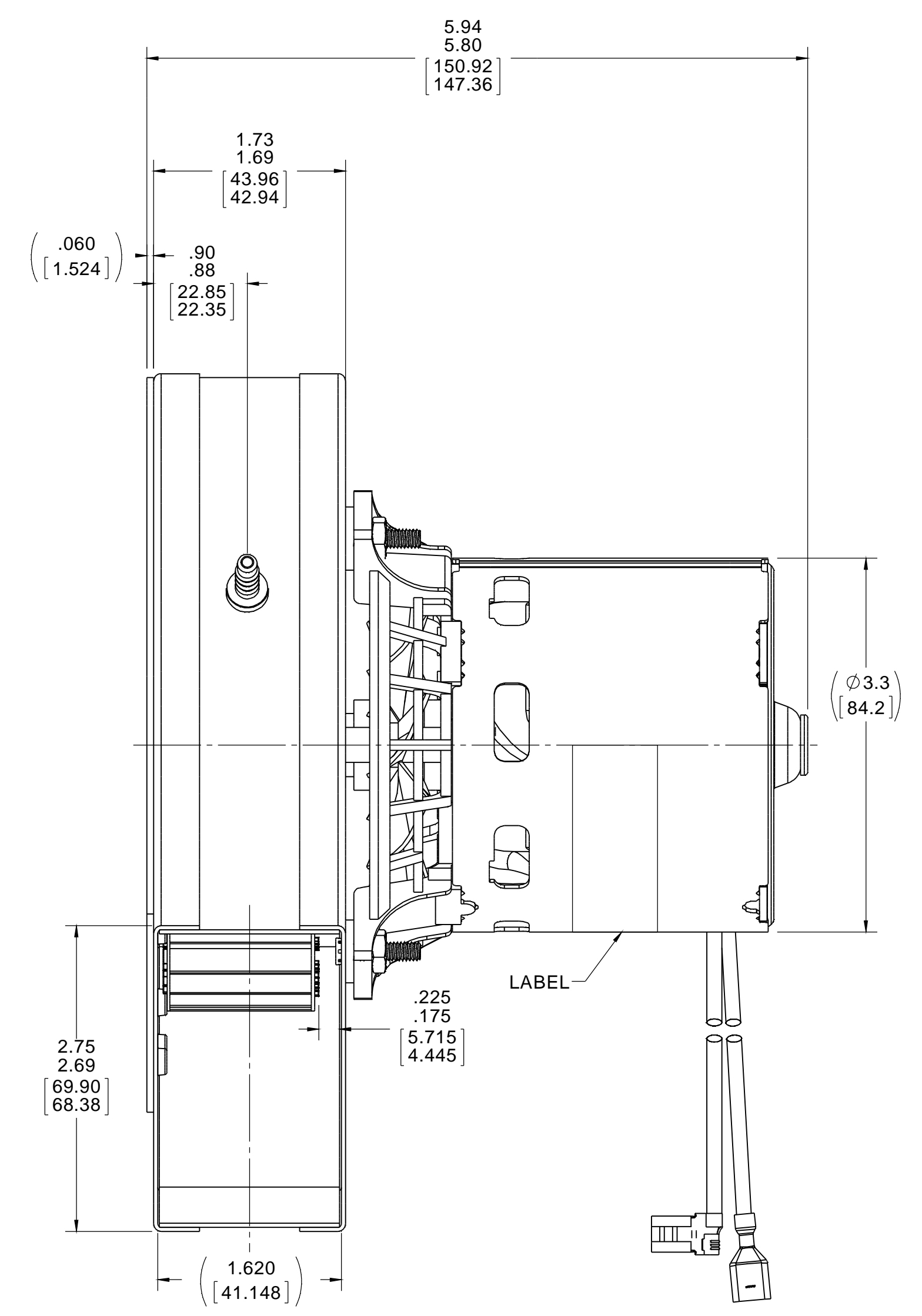
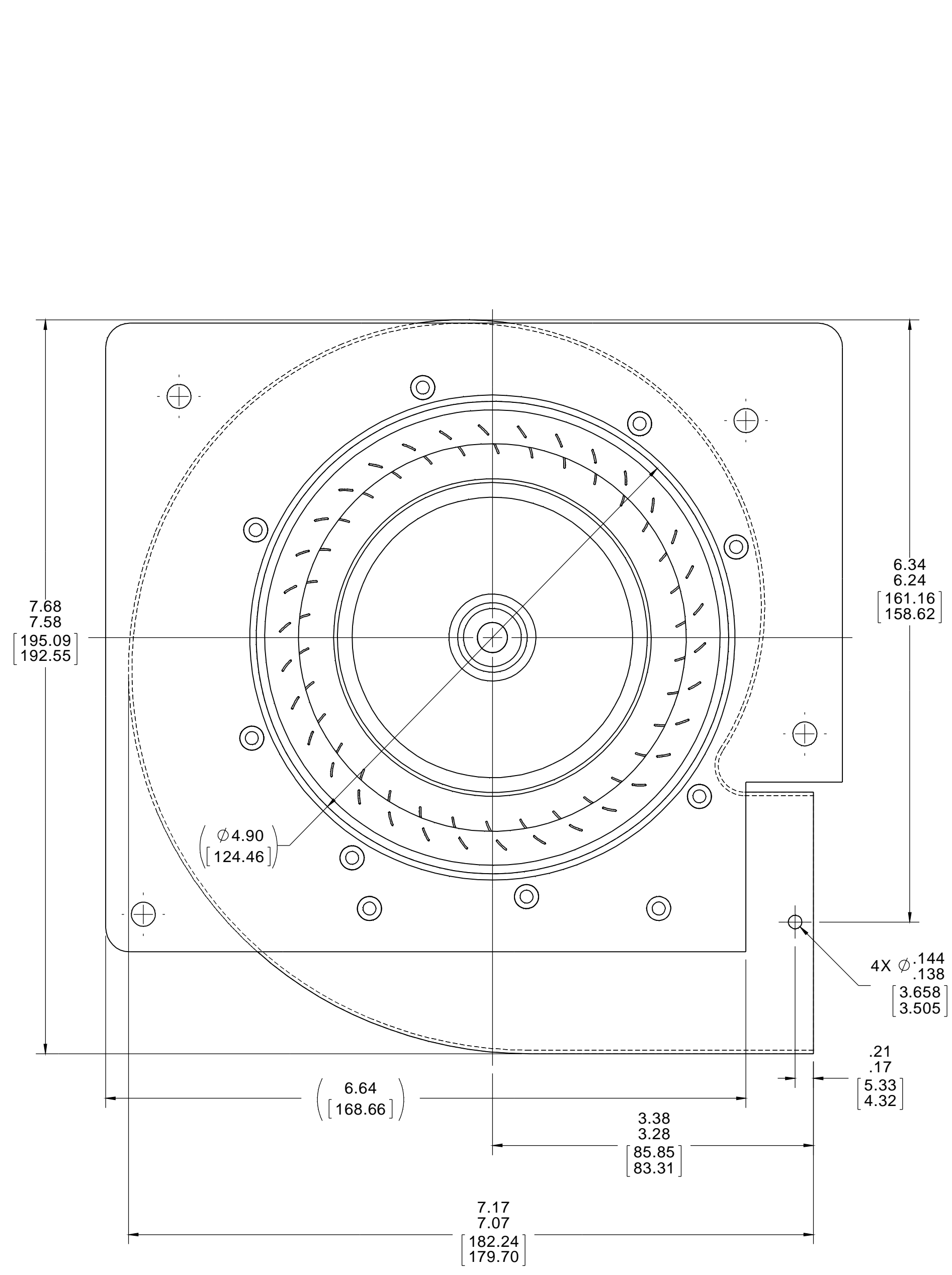
THERMALLY PROTECTED CLASS "B" INSULATION SEALED BALL BEARING 416 SS SHAFT

APPLICATION:	DIST.	B	LA	FR	A	S	C	E	B	A
CUSTOMER:	FASCO DIST.	12	21	47	V	04	AX	5	0	0
CUSTOMER PN:	D9430									

LEAD MATERIAL  
 18 GA. 125 PC 2/64 INSUL.  
 X-LINKED POLY, (1) BLACK  
 21.00/19.00 [533.40/482.60] IN. [mm] LONG  
 WITH FSPADE TERM. 89034011  
 AMP 2-520183-2  
 AND (1) BLACK  
 31.00/29.00 [787.40/736.60] IN. [mm] LONG  
 WITH FLAG TERM. 89034045  
 AMP 42742-2



DETAIL B  
SCALE 2 : 1



TYPICAL PERFORMANCE TEST DATA  
WITH 1 5/16" INLET RESTRICTOR  
AT 208-230 VOLTS 60 Hz

VOLTS	RPM	WATTS	AMPS
230 V	3364	82.4	.61
208 V	3330	62	.48

BLOWER WEIGHT 4.875 LBS.      ENDDPLAY .XX/.XX

DRAWING REVISION A	REVISION BY MLS	DATE 5/19/2015	TOLERANCES UNLESS OTHERWISE SPECIFIED: DEC. INCH ±0.1 [±2.5] .XX ±0.01 [±0.25] XXX ±0.005 [±0.127] XXXX ±0.0005 [±0.0127]	DRAWN BY MLS	DATE 5/19/2015
ECO-0077602	APPROVED BY MLM	DATE 5/19/2015	RELEASE FOR PRODUCTION	APPROVED BY MLM	DATE 5/19/2015
<small>COPYRIGHT REGAL BELOIT AMERICA, INC. ALL RIGHTS RESERVED.                  PROPRIETARY AND CONFIDENTIAL INFORMATION - THIS DOCUMENT IS THE PROPERTY OF                  REGAL BELOIT AMERICA, INC. OWNER'S AND CONTAINING OWNER'S PROPRIETARY                  INFORMATION. ANY PERSON, CORPORATION OR OTHER FIRM RECEIVING IT IS DEEMED,                  BY RECEIVING IT, TO AGREE THAT IT AND/OR ANY PART OF IT SHALL NOT BE DISCLOSED                  TO ANY PERSON, CORPORATION OR OTHER ENTITY, DUPLICATED AND/OR USED, EXCEPT                  AS EXPRESSLY APPROVED IN WRITING IN ADVANCE BY OWNER. THIS DOCUMENT SHALL                  BE RETURNED TO OWNER UPON REQUEST. IT MAY BE SUBJECT TO CERTAIN                  RESTRICTIONS UNDER APPLICABLE EXPORT CONTROL LAWS AND REGULATIONS.</small>			REGAL™ Regal Beloit America, Inc. DESCRIPTION <b>BLOWER ASSY</b> MATERIAL PROCESS/FINISH NATURAL THIRD ANGLE PROJECTION SIZE D DRAWING NUMBER 702112993 SHEET 1 OF 1		