

- NOTES:
1. STATOR LOCATION DIMENSION IS FROM SLEEVE EDGE (OPPOSITE LEAD END) TO STATOR STEEL 1.06/1.04.
 2. STATOR STACK 7/8".
 3. PRESS STATOR SO THAT NOTCH LINES UP WITH WELD SEAM OF SLEEVE AND LEADS EXIT APPROX. AS SHOWN.
 4. THRU AIR SPACING BETWEEN WIRE AND METAL .094 MIN.
 5. TIE BOLT TORQUE TOLERANCE 13-17 IN. LBS.
 6. SALES TO SPECIFY ON P.O. WHICH PACK TO USE.

| ECO | REV. | DATE | SPEC/CHECK |
|--------|------|----------|------------|
| 640108 | 9 | 7-11-09 | LDC/LDC |
| 642694 | 10 | 12-20-11 | NJP/NJP |
| 631220 | 7 | 5-20-03 | MKR/MKR |
| 638464 | 8 | 8-1-08 | MKR/MKR |

71xx xxxx,R

A. SEE PACKAGING MANUAL PAGE 4 FOR PACKAGING PROCEDURES.

1 MOTOR/CARTON;
12 MOTORS/LAYER;
4 LAYERS/PALLET;
48 MOTORS/PALLET.

B. SEE DRAWING 8785 6079 SH. 2 FOR PALLET LAYOUT.

C. CENTER LABEL, 6119 6545, ON END OF CARTON.

D. PLACE PAMPHLET, 6122 4579, IN CARTON WITH MOTOR.

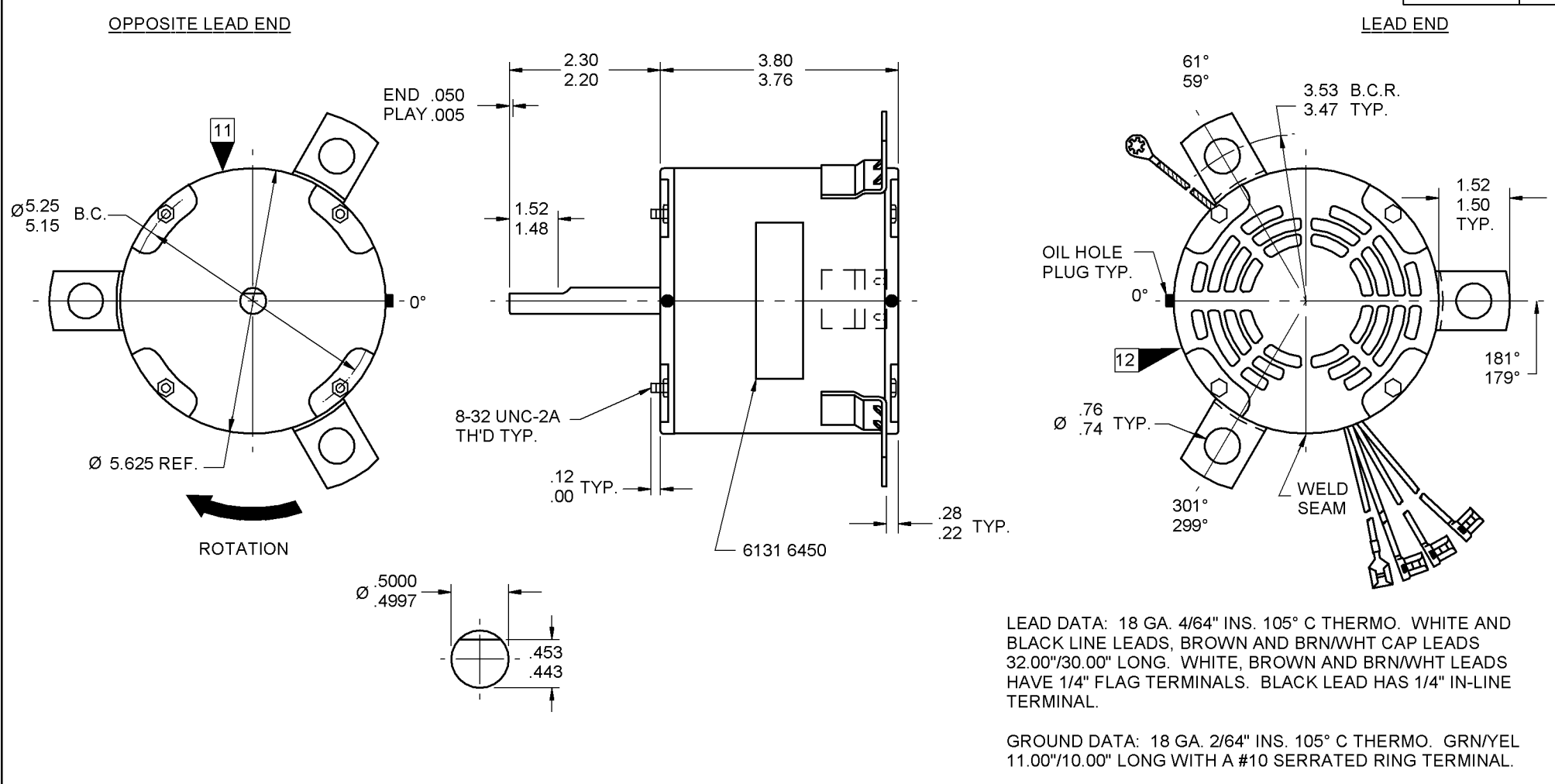
71xx xxxxC

71xx xxxxZ

If Printed, this is an Uncontrolled Document

| PRODUCTION TEST AT IDLE 277 VOLTS 60 HZ | | MOTOR SPEED | PERFORMANCE TEST 277 VOLTS 60 HZ 1 PH 1/6 HP CAP. 5 MFD 370 VAC | | | | | | | | | | |
|--|-------------|-------------|---|-----|------|--------|------|-----|------|--------|-----|------|-------|
| AMP | WATT | | IDLE | | | LOADED | | | | LOCKED | | | BREAK |
| | | | RPM | AMP | WATT | OZ/FT | RPM | AMP | WATT | OZ/FT | AMP | WATT | OZ/FT |
| .44 — .36 | 97.9 — 80.1 | HIGH | 1775 | .4 | 89 | 9.4 | 1650 | .8 | 208 | 5.6 | 1.6 | 431 | 14.6 |
| | | | | | | | | | | | | | |
| | | | | | | | | | | | | | |
| | | | | | | | | | | | | | |
| HI-POT TEST 2000 VOLTS | | | | | | | | | | | | | |
| MAX LEAKAGE CURRENT 5 mA | | | | | | | | | | | | | |

7124 0823 MA



IF MOUNTING MOTOR HORIZONTALLY, 0° MUST BE AT TOP OF MOTOR ±60°.

SPECIAL INSTRUCTIONS: SHAFT IS BONDERIZED. ROTOR IS RUSTPROOFED. ROTATE WELD SEAM 90° CWLSE AS SHOWN. PAMPHLET PACKED WITH MOTOR.

FASCO FASCO INDUSTRIES, INC. MOTOR DIVISION ASSEMBLED IN MEXICO

V. 277 HZ 60 PH 1 A0 ROT HP 1/6 40° C AMB CAP 5 MFD 370 VAC AMP .8 TYPE U24B1 NO. 7124-0823 RPM 1650 INS CL B THERMALLY PROTECTED

CONNECTION DIAGRAM
BRN — CAPACITOR
BRN/WHT —
WHITE — LINE
BLACK — LINE

MODEL D894

SAFETY WARNING
THIS MOTOR MUST BE GROUNDED IN ACCORDANCE WITH LOCAL OR NATIONAL ELECTRICAL CODES TO PREVENT POSSIBLE INJURY DUE TO ELECTRICAL SHOCK

DATE/BAR CODE AREA PER 8882 6003

6131 6450,R REV. 5

LOCATE C OF NAMEPLATE ON C OF SLEEVE TO READ RIGHT FROM LEAD END OF MOTOR CENTER AT 0°.

SIZE 3.50 X 1.00

MOTORS PACKED MAX. PER SKID: PALLET PACK, 48 CARTON PACK, TRAY PACK.

CUSTOMER: FASCO DISTRIBUTING CO.

PART NUMBER: D894

APPLICATION: DIST. SALES FINISH COLOR: GRAY MOTOR WEIGHT: 9.00 LBS. ENVIRONMENT: WET INSULATION CLASS: B

MOTOR TYPE P.S.C.

| | | | | | | | | |
|----|----|----|---|----|----|---|---|---|
| B | LA | FR | A | S | C | E | B | A |
| 00 | 24 | 33 | V | 19 | AC | 5 | E | 0 |

MOTOR NUMBER 7124 0823 REV. 10

8869 6587 2