

NOTES

1. STATOR LOCATION DIMENSION IS FROM SLEEVE EDGE (OPPOSITE LEAD END) TO STATOR STEEL 1.41/1.39.
2. STATOR STACK 2".
3. PRESS STATOR SO THAT STATOR NOTCH LINES UP WITH WELD SEAM OF SLEEVE AND LEADS EXIT APPROX. AS SHOWN.
4. THRU AIR SPACING BETWEEN WIRE AND METAL .094 MIN.
5. TIE BOLT TORQUE TOLERANCE 13 - 17 IN. LBS.
6. SALES TO SPECIFY ON P.O. WHICH PACK TO USE.

ECO	REV.	DATE	SPEC/CHECK
643222	9	8-6-12	NJP/NJP
621674	6	9-19-98	JDY/RWS
631728	7	9-9-03	LDC/LDC
640590	8	10-5-09	LDC/LDC

A. SEE PACKAGING MANUAL PAGE 3 FOR PACKAGING PROCEDURES.

1 MOTOR/CARTON;
21 MOTORS/LAYER;
6 LAYERS/PALLET;
126 MOTORS/PALLET.

- SEE DRAWING 8785 6079 SH. 1 FOR PALLET LAYOUT.
- CENTER LABEL, 6119 6561, ON END OF CARTON.
- PLACE PAMPHLET, 6122 4579, IN CARTON WITH MOTOR.

If Printed, this is an Uncontrolled Document

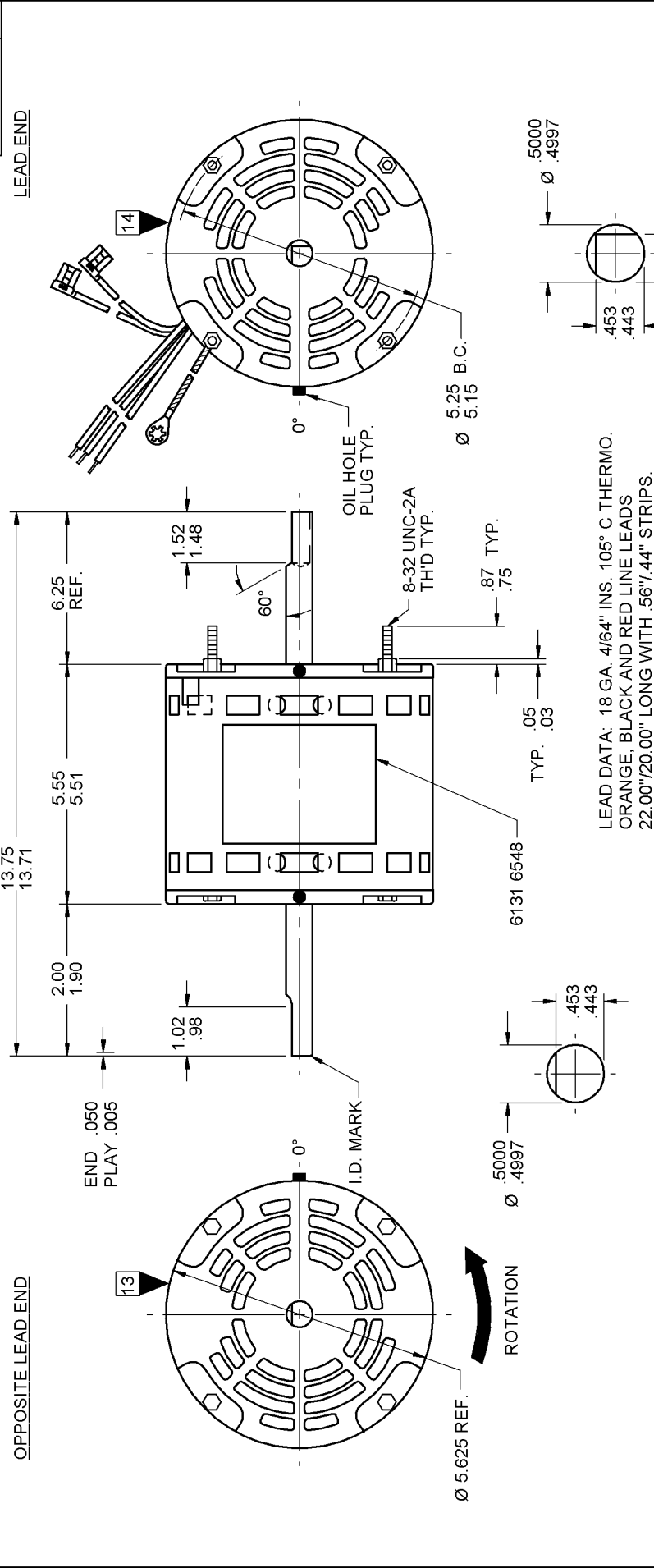
71xx xxxz

71xx xxxc

71xx xxxz

PRODUCTION TEST AT IDLE 230 VOLTS 60 HZ		MOTOR SPEED		PERFORMANCE TEST 230 VOLTS 60 HZ 1 PH 3/4 HP				LOADED				LOCKED				BREAK			
AMP	WATT	RPM	WATT	RPM	WATT	AMP	RPM	WATT	AMP	OZFT	WATT	AMP	OZFT	WATT	AMP	OZFT	WATT		
2.42	— 1.98	289.3	— 236.7	HIGH		1194	2.2	263	63.0	63.0	912	4.3	912	24.1	7.8	1540	74.2		
1.65	— 1.35	221.1	— 180.9	LOW		1194	1.5	201	53.2	53.2	764	3.5	764	19.0	6.8	1296	64.2		
HI-POT TEST 2000 VOLTS																			
MAX LEAKAGE CURRENT 5 mA																			

71xx xxxz																7126 1992		MA	
-----------	--	--	--	--	--	--	--	--	--	--	--	--	--	--	--	-----------	--	----	--



LEAD DATA: 18 GA. 4/64" INS. 105° C THERMO. ORANGE, BLACK AND RED LINE LEADS 22.00"/20.00" LONG WITH .56"/.44" STRIPS. BROWN AND BRN/WHIT CAP. LEADS 15.00"/13.00" LONG WITH 1/4" FLAG TERMINALS.

GROUND DATA: 18 GA. 2/64" INS. 105° C THERMO. GRN/YEL 13.00"/12.00" LONG WITH A # 10 SERRATED RING TERMINAL.

FASCO THERMALLY PROTECTED
MODEL D872

V. 230 HZ 60 PH 1 ROT →
HP 3/4-1/2 A0 CAP 12.5 MFD 370 VAC
AMP 4.3-3.5 INS CL B 40° C AMB
RPM 1075 (2 SPD) TYPE U26B1 NO. 7126-1992

CONNECTION DIAGRAM
BRN — CAPACITOR
BRN — LINE
ORG — LINE
BLK-HI — LINE
RED-LO — LINE

SAFETY WARNING
THIS MOTOR MUST BE GROUNDED IN ACCORDANCE WITH LOCAL OR NATIONAL ELECTRICAL CODES TO PREVENT POSSIBLE INJURY DUE TO ELECTRICAL SHOCK

DATE/BAR CODE AREA PER 8882 6003

6131 6548, R REV. 6

LOCATE Ø OF NAMEPLATE ON Ø OF SLEEVE TO READ RIGHT FROM LEAD END OF MOTOR CENTER AT 0°.

SIZE 3.50 X 2.00

SPECIAL INSTRUCTIONS: SHAFT IS BONDERIZED. ROTOR IS RUSTPROOFED. FLATS TO BE PARALLEL WITHIN ± 20°. PAMPHLET PACKED WITH MOTOR.

MOTORS PACKED MAX. PER SKID: PALLET PACK, 126 CARTON PACK, TRAY PACK.
CUSTOMER: FASCO DISTRIBUTING CO.

PART NUMBER: D872
APPLICATION: DIST. SALES P.S.C.
FINISH COLOR: GRAY
MOTOR WEIGHT: 15.25 LBS.
ENVIRONMENT: WET
INSULATION CLASS: B

MOTOR TYPE		MOTOR NUMBER	
P.S.C.		7126 1992	
B	LA	A	S
C	E	B	A
00	26	30	V
08	CS	6	E
0			0



FASCO INDUSTRIES, INC.
MOTOR DIVISION
ELDON PLANT

IF MOUNTING MOTOR HORIZONTALLY, 0° MUST BE AT TOP OF MOTOR ± 60°.