

NOTES

1. STATOR LOCATION DIMENSION IS FROM SLEEVE EDGE (OPPOSITE LEAD END) TO STATOR STEEL 91/89.
2. STATOR STACK 1 1/2".
3. PRESS STATOR SO THAT STATOR NOTCH LINES UP WITH WELD SEAM OF SLEEVE AND LEADS EXIT APPROX. AS SHOWN.
4. THRU AIR SPACING BETWEEN WIRE AND METAL .094 MIN.
5. TIE BOLT TORQUE TOLERANCE 13 - 17 IN. LBS.
6. SALES TO SPECIFY ON P.O. WHICH PACK TO USE.

ECO	REV.	DATE	SPEC/CHECK
631200	38	5-16-03	LDC/LDC
639377	39	04-03-09	GAE/GAE
642526	40	10-28-11	NJP/NJP
626946	37	11-10-00	LDC/RWS

A. SEE PACKAGING MANUAL PAGE 3 FOR PACKAGING PROCEDURES.

1 MOTOR/CARTON;  
21 MOTORS/LAYER;  
6 LAYERS/PALLET;  
126 MOTORS/PALLET.

- SEE DRAWING 8785 6079 SH. 1 FOR PALLET LAYOUT.
- CENTER LABEL, 6119 6078, ON END OF CARTON.
- PLACE PAMPHLET, 6122 4579, IN CARTON WITH MOTOR.

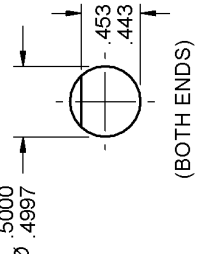
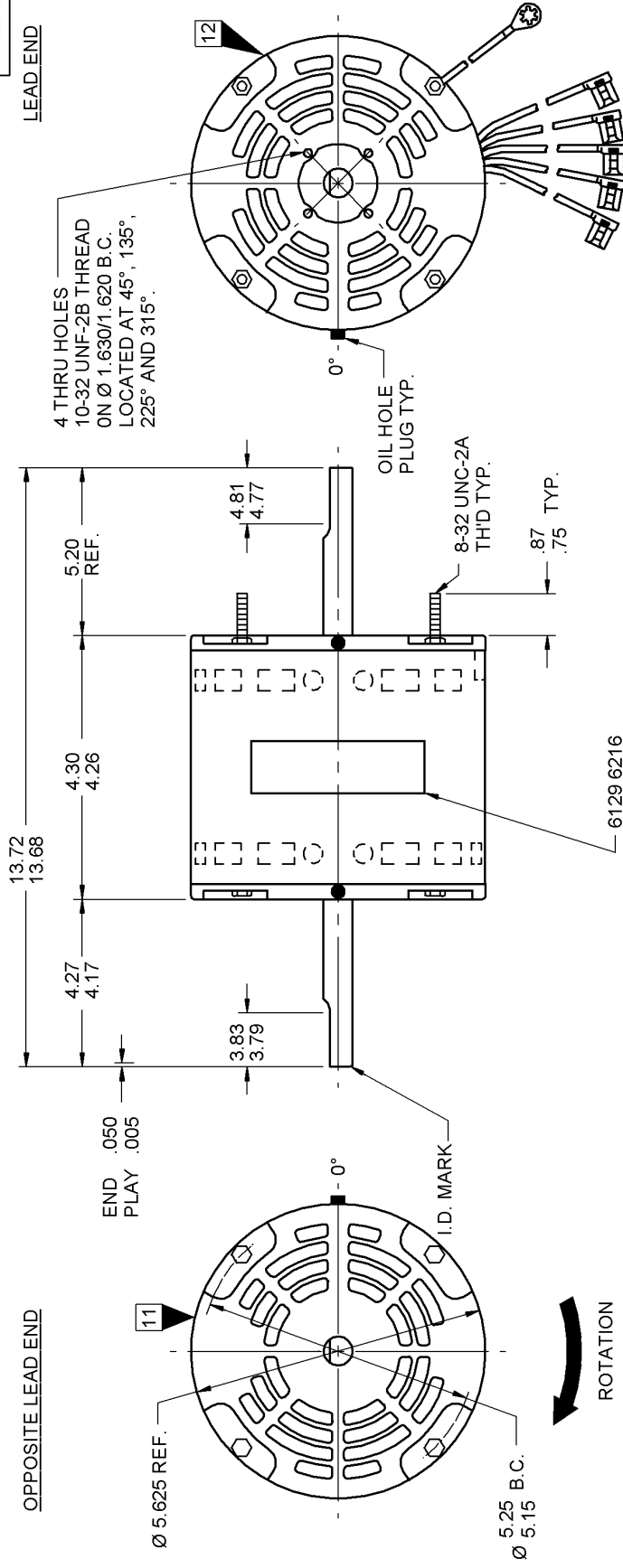
71xx xxxx, R

71xx xxxxC

71xx xxxzZ

PRODUCTION TEST AT IDLE		MOTOR SPEED		PERFORMANCE TEST						CAP. 5 MFD 370 VAC			
230 VOLTS 60 HZ		230 VOLTS 60 HZ		1 PH		1/3 HP		LOADED		LOCKED		BREAK	
AMP	WATT	RPM	AMP	WATT	RPM	AMP	WATT	WATT	AMP	OZ/FT	AMP	WATT	OZ/FT
1.10	— .90	1194	1.0	142	1100	1.8	377	377	3.8	7.0	3.8	757	30.4
.55	— .45	1193	.5	72	950	1.6	324	324	2.2	3.6	2.2	409	17.2
.33	— .27	1192	.3	47	700	1.4	261	261	1.5	2.9	1.5	274	12.4

HI-POT TEST 2000 VOLTS	
MAX LEAKAGE CURRENT 5 mA	
	7126 0280 MA



LEAD DATA: 18 GA. 4/64" INS. 105° C THERMO. WHITE, BLUE, YELLOW AND ORANGE LINE LEADS AND BROWN CAP LEAD. ALL LEADS ARE 42.00"/40.00" LONG WITH 1/4" FLAG TERMINALS.

GROUND DATA: 18 GA. 2/64" INS. 105° C THERMO. GREEN 9.00"/8.00" LONG WITH A # 8 SERRATED RING TERMINAL.

IF MOUNTING MOTOR HORIZONTALLY, 0° MUST BE AT TOP OF MOTOR ± 60°.

SPECIAL INSTRUCTIONS: SHAFT IS BONDERIZED. ROTOR IS RUSTPROOFED. FLATS TO BE PARALLEL WITHIN ± 20°. PAMPHLET PACKED WITH MOTOR.

**FASCO** THERMALLY PROTECTED MOTOR DIVISION MODEL D859

V. 230 HZ 60 PH 1 ROT  
HP 1/3 40° C AMB TYPE U2681  
AMP 1.7 RPM 1100 CAP 5 MFD 370 VAC  
INS CL B AO NO. 7126-0280

CONNECTION DIAGRAM  
BRN — CAPACITOR  
WHITE — LINE  
BLUE-HI — LINE  
YELLOW-MED — LINE  
ORG.-LO — LINE

SAFETY WARNING  
THIS MOTOR MUST BE GROUNDED IN ACCORDANCE WITH LOCAL OR NATIONAL ELECTRICAL CODES TO PREVENT POSSIBLE INJURY DUE TO ELECTRICAL SHOCK

DATE/BAR CODE AREA PER 8882 6003

MOTORS PACKED MAX. PER SKID: PALLET PACK, 126 CARTON PACK, TRAY PACK.  
CUSTOMER: FASCO DISTRIBUTING CO.  
PART NUMBER: D859

APPLICATION: REPLACEMENT FOR WHIRLPOOL INSIDE-OUTSIDE MOTOR

FINISH COLOR: GRAY	MOTOR TYPE	MOTOR NUMBER	REV.
MOTOR WEIGHT: 12.00 LBS.	P.S.C.	7126 0280	40
ENVIRONMENT: WET			
INSULATION CLASS: B			

LOCATE Ø OF NAMEPLATE ON Ø OF SLEEVE TO READ RIGHT FROM LEAD END OF MOTOR CENTER AT 0°.

SIZE 3.50 X 1.00