

- NOTES:
1. STATOR LOCATION DIMENSION IS FROM SLEEVE EDGE (OPPOSITE LEAD END) TO STATOR STEEL 1.06/1.04.
 2. STATOR STACK 3/4".
 3. PRESS STATOR SO THAT STATOR NOTCH LINES UP WITH WELD SEAM OF SLEEVE AND LEADS EXIT APPROX. AS SHOWN.
 4. THRU AIR SPACING BETWEEN WIRE AND METAL .094 MIN.
 5. TIE BOLT TORQUE TOLERANCE 13-17 IN. LBS.
 6. SALES TO SPECIFY ON P.O. WHICH PACK TO USE.

| ECO | REV. | DATE | SPEC/CHECK |
|--------|------|----------|------------|
| 635250 | 21 | 10-26-05 | GAE/GAE |
| 640477 | 22 | 9-19-09 | MKR/MKR |
| 642680 | 23 | 12-16-11 | MKR/MKR |

71x xxx,R

A. SEE PACKAGING MANUAL PAGE 4 FOR PACKAGING PROCEDURE.

1 MOTORS/LAYER;
12 LAYERS/CARTON;
4 CARTONS/PALLET;
48 MOTORS/PALLET.

B. SEE DRAWING 8785 6079 SH. 2 FOR PALLET LAYOUT.

C. CENTER LABEL, 6119 6245, ON END OF CARTON.

D. PLACE PAMPHLET, 6122 4579, IN CARTON WITH MOTOR.

71x xxxC

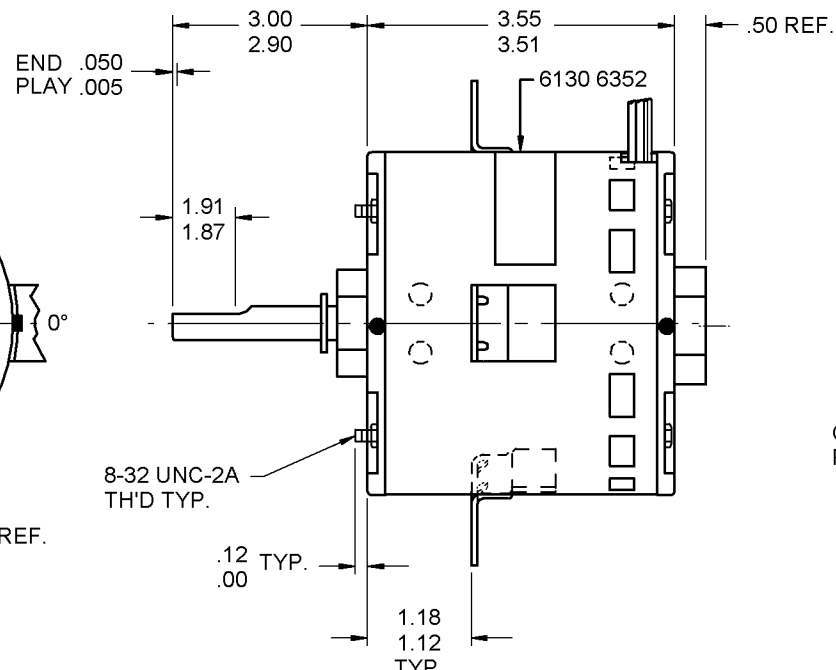
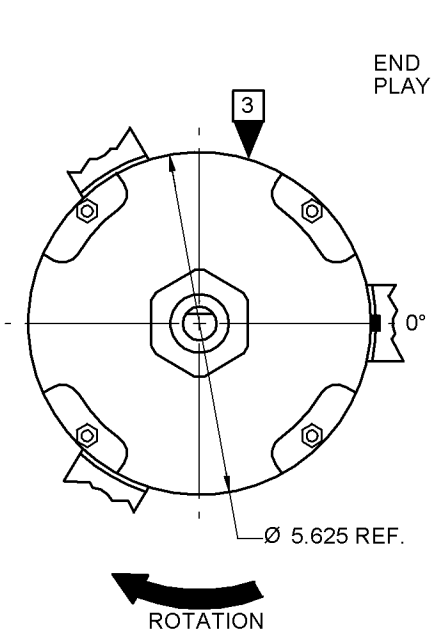
71x xxxZ

If Printed, this is an Uncontrolled Document

| PRODUCTION TEST AT IDLE 230 VOLTS 60 HZ | | MOTOR SPEED | PERFORMANCE TEST 230 VOLTS 60 HZ 1 PH 1/4 HP CAP. 4 MFD 370 VAC | | | | | | | | | | |
|--|---------------|-------------|---|-----|------|--------|------|-----|------|--------|-----|------|-------|
| AMP | WATT | | IDLE | | | LOADED | | | | LOCKED | | | BREAK |
| | | | RPM | AMP | WATT | OZ/FT | RPM | AMP | WATT | OZ/FT | AMP | WATT | OZ/FT |
| .99 — .81 | 138.6 — 113.4 | HIGH | 1784 | .9 | 126 | 12.9 | 1625 | 1.4 | 309 | 5.4 | 3.2 | 626 | 18.0 |

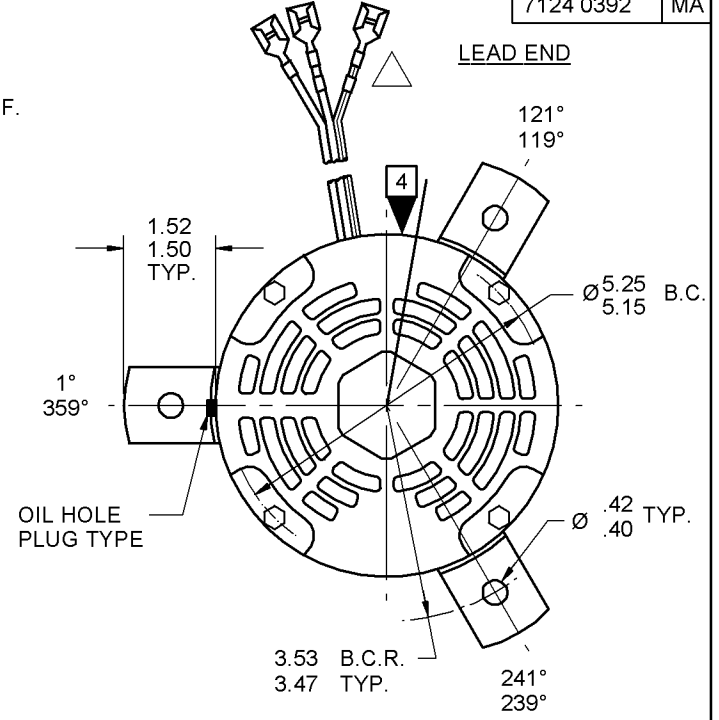
HI-POT TEST 2000 VOLTS
MAX LEAKAGE CURRENT 5 mA

OPPOSITE LEAD END



7124 0392 MA

LEAD END



LEAD DATA: 18 GA. 3/64" INS. 90° C NEO. 3 COND. BLACK. 40.00"/38.00" LONG, 2.50"/2.00" SPLIT. ALL WITH 1/4" IN-LINE Q.C. TERMINALS. TAPE SPLIT END OF LEADS WITH COLORED TAPE AS FOLLOWS: CENTER LEAD - RED RIBBED LEAD - WHITE

IF MOUNTING MOTOR HORIZONTALLY, 0° MUST BE AT TOP OF MOTOR ± 60°.

SPECIAL INSTRUCTIONS: SHAFT IS BONDERIZED. ROTOR IS RUSTPROOFED. RIBBED LEAD TO HAVE WHITE TAPE, CENTER LEAD TO HAVE RED TAPE. PAMPHLET PACKED WITH MOTOR.

MOTORS PACKED MAX. PER SKID: ___ PALLET PACK, 48 CARTON PACK, ___ TRAY PACK.

| | |
|-------------------------------------|---|
| CUSTOMER: FASCO DISTRIBUTING CO. | PROPRIETARY: DO NOT DUPLICATE OR DISCLOSE TO THIRD PARTIES WITHOUT WRITTEN PERMISSION OF FASCO IND. INC., ELDON MO. |
| PART NUMBER: D844 | FASCO INDUSTRIES, INC. MOTOR DIVISION ELDON PLANT |
| APPLICATION: DIST. SALES | MOTOR TYPE P.S.C. |
| FINISH COLOR: GRAY | MOTOR NUMBER 7124 0392 R |
| MOTOR WEIGHT: 8.28 LBS. | REV. 23 |
| ENVIRONMENT: WET | |
| INSULATION CLASS: B | |

FASCO FASCO INDUSTRIES, INC. MOTOR DIVISION ASSEMBLED IN MEXICO

V. 230 HZ 60 PH 1 AO ROT ←
HP 1/4 40° C AMB CAP 4 MFD 370 VAC
AMP 1.5 INS CL B NO. 7124-0392
RPM 1625 TYPE U24B1

MODEL D844

CONNECTION DIAGRAM
RED OR BRN — CAPACITOR
(OR 5 OR 11) — LINE
WHITE — LINE
BLACK OR (2 OR 20) — LINE

SAFETY WARNING
THIS MOTOR MUST BE GROUNDED IN ACCORDANCE WITH LOCAL OR NATIONAL ELECTRICAL CODES TO PREVENT POSSIBLE INJURY DUE TO ELECTRICAL SHOCK

DATE/BAR CODE AREA PER 8882 6003

6130 6352,R REV. 10

LOCATE ϕ OF NAMEPLATE ON ϕ OF SLEEVE TO READ RIGHT FROM LEAD END OF MOTOR CENTER AT 60° CWLE.
SIZE 3.50 X 1.00

8869 6537 2