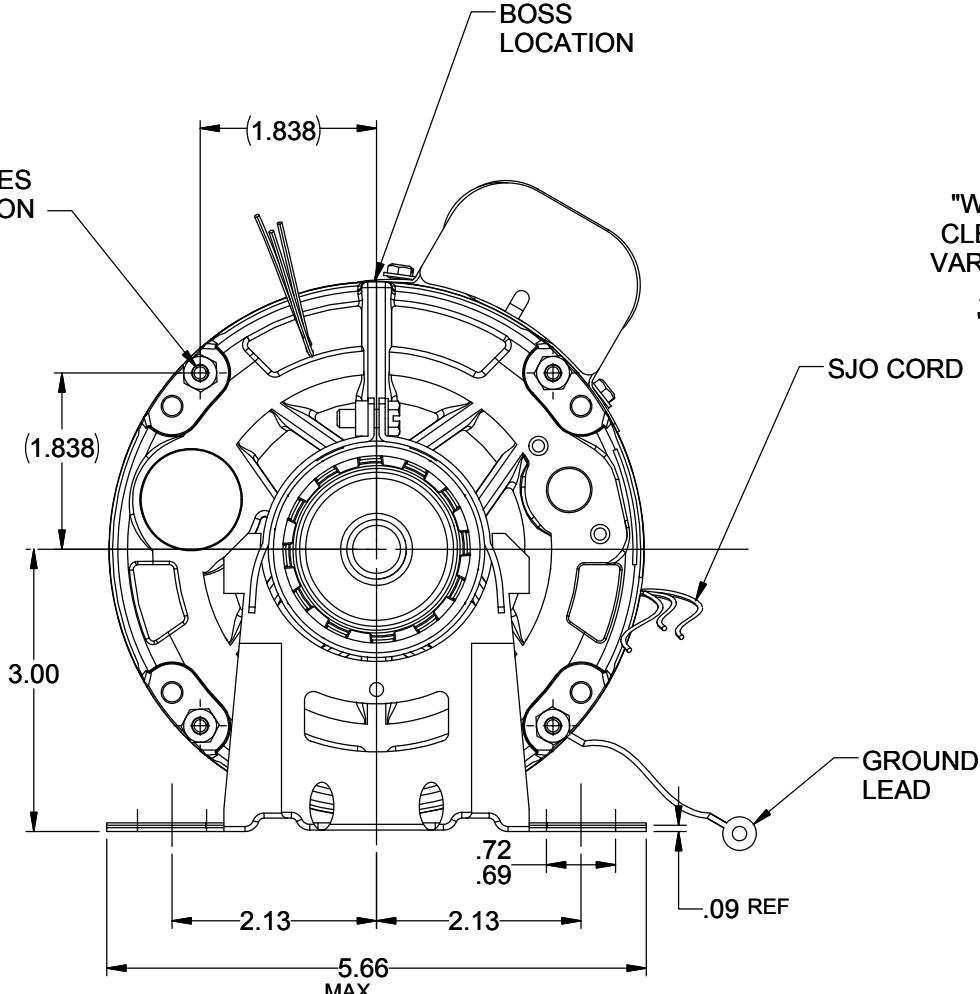


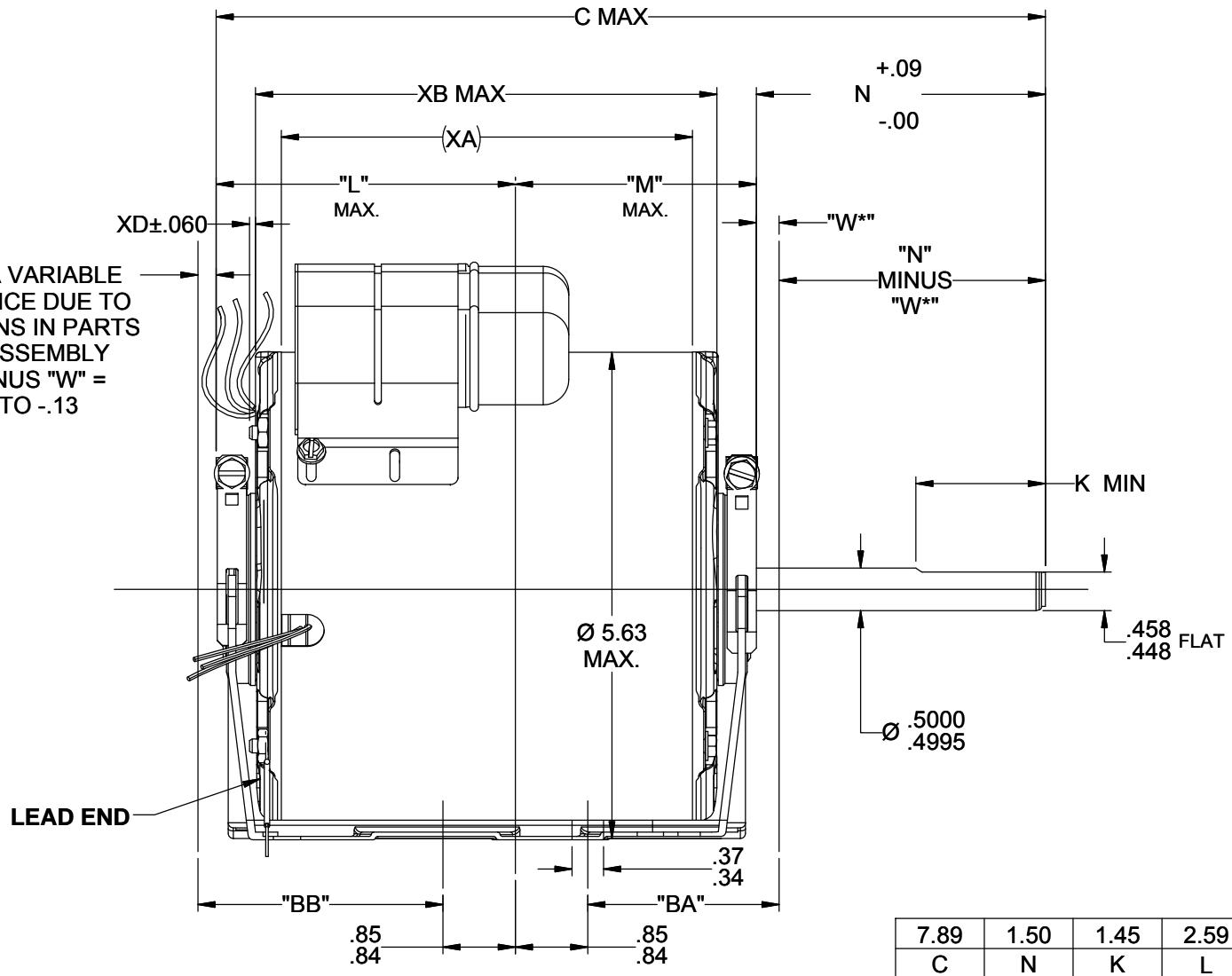
S.NO	CONNECTION	COLOR	EXIT TYPE	EXIT LOC (VIEWED LE)	GAGE	MATERIAL	WALL THK	LENGTH	TERMINATION
1	COMMON LEAD	WHITE	SHELL NOTCH	3:20	18	N/R	N/R	20.00	.50 BWS
2	REV LEAD	YELLOW	E/S VENT	11:20	18	EPDM	2/64	4.00	.25 MALE ISQC
3	HIGH SPEED LEAD	BLACK	SHELL NOTCH	3:20	18	N/R	N/R	20.00	.50 BWS
4	REV LEAD	ORANGE	E/S VENT	11:20	18	EPDM	2/64	4.00	.25 MALE ISQC
5	CAPACITOR LEAD	BRN/WHT	SHELL NOTCH	1:00	18	EPDM	2/64	4.00	.25 FLAG QC
6	REV LEAD	BROWN	E/S VENT	11:20	18	EPDM	2/64	4.00	.25 FISQC LO INS FORCE
7	N/R	RED	SHELL NOTCH	3:20	18	N/R	N/R	20.00	.50 BWS
8	REV LEAD	PURPLE	E/S VENT	11:20	18	EPDM	2/64	4.00	.25 FISQC LO INS FORCE
9	CAPACITOR LEAD	BROWN	SHELL NOTCH	1:00	18	EPDM	2/64	4.00	.25 FLAG QC
10	GROUND	GRN-YEL	CLAMP SCREW	4:30	18	THERMOPLASTIC	2/64	3.50	#10 EYELET

NAMEPLATE DATA	
MODEL	5KCP39EFBB37P
CUST P/N	STOCK NO D829
HP	1/4
RPM	825
VOLTS	115
HZ	60
* SPEDS	1
AMPS	5.04
CAP REQD-1	6.00 μ f d / 370 Volts
CAP REQD-2	N / R
CONN DRW	NP24X350147
ROTATION	CCW/CW (VIEWED FROM LE)

#8-32 THREAD . THESE SCREWS FIT A GAGE HAVING (4) HOLES OF \varnothing .1910 LOCATED ON BASIC POSITION(5.20 REF BOLT CIRCLE DIAMETER).



"W*" IS A VARIABLE CLEARANCE DUE TO VARIATIONS IN PARTS AND ASSEMBLY
"N" MINUS "W*" = +.09 TO -.13



- NOTE:
- 1) DIMENSIONS SHOWN ARE NOMINAL UNLESS OTHERWISE SPECIFIED.
 - 2) ALL CLOCK LOCATIONS ARE WITH RESPECT TO THE WELD AT THE BOTTOM(6 O' CLOCK) AND LOOKING AT THE LEAD END.
 - 3) NAME PLATE LABEL LOCATION : 315° - CENTER - READ FROM LE.

VENTILATION SYSTEM	
SHELL VENTS	CLOSED
ENDSHIELD (OPP.LEAD END)	OPEN
ENDSHIELD (LEAD END)	OPEN

DRAWING REVISION C	REVISION BY KEP	DATE 2/13/2017
ECO ECO-0118093	APPROVED BY A.NELSON	DATE 2/13/2017
ECO DESCRIPTION UPDATED NP AMPS VALUE		
<small>COPYRIGHT REGAL BELOIT AMERICA, INC. ALL RIGHTS RESERVED. PROPRIETARY AND CONFIDENTIAL INFORMATION - THIS DOCUMENT IS THE PROPERTY OF REGAL BELOIT AMERICA, INC. ("OWNER") AND CONTAINS OWNER'S PROPRIETARY INFORMATION. ANY PERSON, CORPORATION OR OTHER FIRM RECEIVING IT IS DEEMED, BY RECEIVING IT, TO AGREE THAT IT, AND/OR ANY PART OF IT, SHALL NOT BE DISCLOSED TO ANY PERSON, CORPORATION OR OTHER ENTITY, DUPLICATED, AND/OR USED, EXCEPT AS EXPRESSLY APPROVED IN WRITING IN ADVANCE BY OWNER. THIS DOCUMENT SHALL BE RETURNED TO OWNER UPON REQUEST. IT MAY BE SUBJECT TO CERTAIN RESTRICTIONS UNDER APPLICABLE EXPORT CONTROL LAWS AND REGULATIONS.</small>		

DRAWN BY RS	DATE 03/10/2011
APPROVED BY BRAMARI	DATE 03/10/2011
REFERENCE	
THIRD ANGLE PROJECTION	

7.89	1.50	1.45	2.59	2.5	N/R	.14
C	N	K	L	BA	XC	XD
				3.87	4.82	5.48
				M	XA	XB

REGAL™ Regal Beloit America, Inc.

DESCRIPTION
OUTLINE
(CUSTOMER NAME: FASCO IND)

MATERIAL PROCESS/FINISH

SIZE **B** DRAWING NUMBER **5KCP39EFBB37P** SHEET 1 OF 1