

- NOTES:
 1. STATOR LOCATION DIMENSION IS FROM SLEEVE EDGE (OPPOSITE LEAD END) TO STATOR STEEL .91/.89.
 2. STATOR STACK 1 3/4".
 3. PRESS STATOR SO THAT NOTCH LINES UP WITH WELD SEAM OF SLEEVE AND LEADS EXIT APPROX. AS SHOWN.
 4. THRU AIR SPACING BETWEEN WIRE AND METAL .094 MIN.
 5. TIE BOLT TORQUE TOLERANCE 13-17 IN. LBS.
 6. CONNECT THE TWO YELLOW REV. LEADS TOGETHER AND THE TWO PURPLE REV. LEADS TOGETHER. THIS WILL GIVE CCWLE ROTATION.
 7. ASSEMBLE SLINGER, 8865 6002, WITH SLICK SIDE AWAY FROM MOTOR.
 8. SALES TO SPECIFY ON P.O. WHICH PACK TO USE.

ECO	REV.	DATE	SPEC/CHECK
635866	29	03-23-06	GAE/GAE
639709	30	5-18-09	LDC/LDC
642528	31	10-28-11	NJP/NJP
631172	28	5-15-03	MKR/MKR

A. SEE PACKAGING MANUAL PAGE 4 FOR PACKAGING PROCEDURE.

- 1 MOTOR/CARTON;
- 12 MOTORS/LAYER;
- 4 LAYERS/PALLET;
- 48 MOTORS/PALLET.

- B. SEE DRAWING 8785 6079 SH. 2 FOR PALLET LAYOUT.
- C. CENTER LABEL, 6119 6169, ON END OF CARTON.
- D. PLACE PAMPHLET, 6122 4579, IN CARTON WITH MOTOR.

71xx xxxx, P

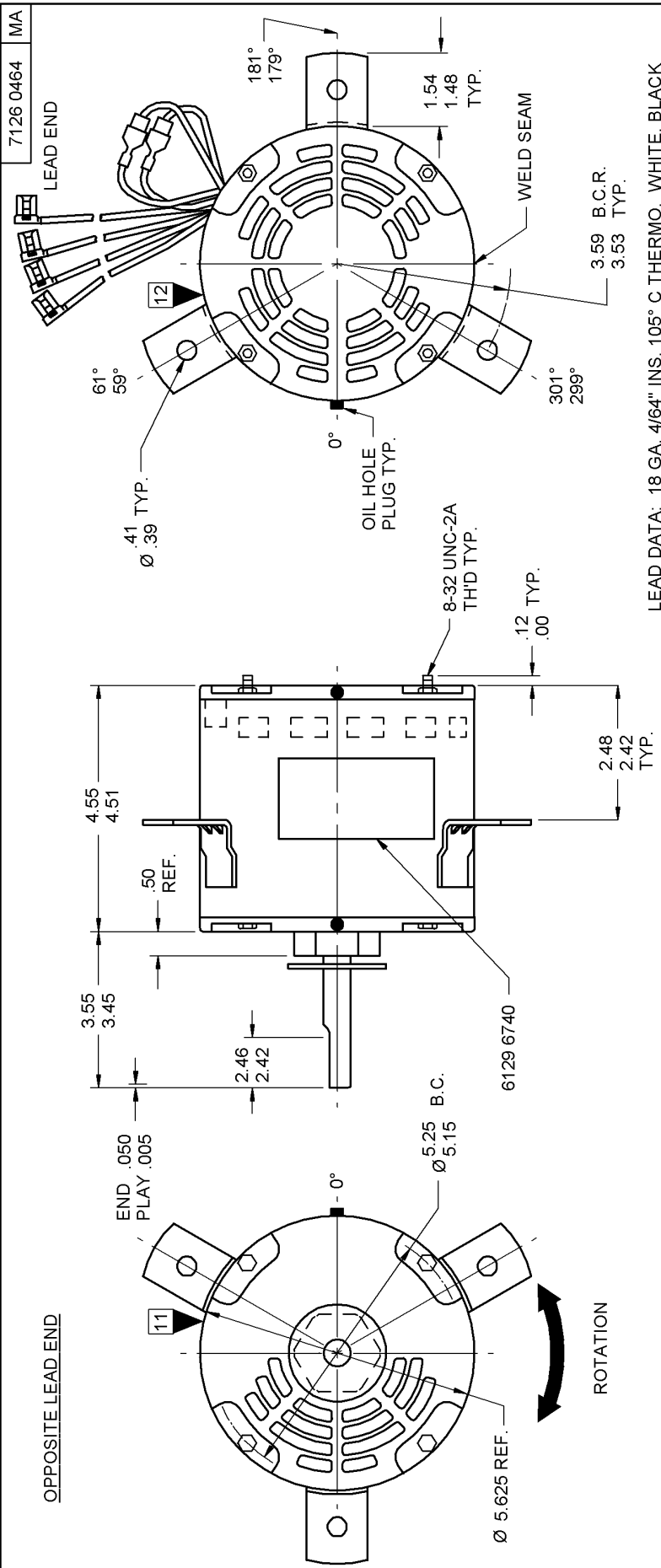
71xx xxxxC

71xx xxxxZ

PERFORMANCE TEST 230 VOLTS 60 HZ 1 PH 1/3 HP CAP. 5 MFD 370 VAC

PRODUCTION TEST AT IDLE 230 VOLTS 60 HZ	MOTOR SPEED		LOADED			LOCKED			BREAK		
	AMP	WATT	RPM	AMP	WATT	OZ/FT	AMP	WATT	OZ/FT		
2.20	1.80	181.5 — 148.5	HIGH	1193	165	37.9	3.2	612	6.5	1017	45.1
.99	.81	91.3 — 74.7	LOW	1190	83	23.5	2.2	423	5.6	617	24.1
HI-POT TEST 2000 VOLTS											
MAX LEAKAGE CURRENT 5 mA											

TYPICAL PERFORMANCE SHOWN ABOVE FOR CCWLE ROTATION.



FASCO THERMALLY PROTECTED
MODEL D803

V. 230 HZ 60 PH 1 ROT CAP 5 MFD 370 VAC
 HP 1/3-1/4 INS CL B NO. 7126-0464
 AMP 2.6 40°C AMB TYPE U26B1
 RPM 1075 (2 SPD) AO

CONNECTION DIAGRAM
 BRN — CAPACITOR LINE
 WHT — LINE
 BLK-HI — LINE
 RED-LO — LINE

ROTATION INSTRUCTIONS
 CW → SHAFT END
 CCW ← SHAFT END
 PURPLE → PURPLE
 PURPLE → PURPLE
 YELLOW → YELLOW
 YELLOW → YELLOW
 PURPLE → PURPLE

SAFETY WARNING
 THIS MOTOR MUST BE GROUNDED IN ACCORDANCE WITH LOCAL OR NATIONAL ELECTRICAL CODES TO PREVENT POSSIBLE INJURY DUE TO ELECTRICAL SHOCK

DATE/BAR CODE AREA PER 8882 6003

6129 6740,R REV. 12

LOCATE Ø OF NAMEPLATE ON SLEEVE APPROX. AS SHOWN TO READ RIGHT FROM LEAD END OF MOTOR CENTER AT 350° CWLE.
 SIZE 3.50 X 2.00

SPECIAL INSTRUCTIONS: SHAFT IS BONDERIZED. ROTOR IS RUSTPROOFED. LOCATE WELD SEAM AT 270° CWLE AS SHOWN. PAMPHLET PACKED WITH MOTOR.

MOTORS PACKED MAX. PER SKID: PALLET PACK, 48 CARTON PACK, TRAY PACK.
 CUSTOMER: FASCO DISTRIBUTING CO. PROPRIETARY: DO NOT DUPLICATE OR DISCLOSE TO THIRD PARTIES WITHOUT WRITTEN PERMISSION OF FASCO IND. INC., ELDON, MO.

PART NUMBER: D803
 APPLICATION: DIST. SALES MOTOR TYPE P.S.C.
 FINISH COLOR: GRAY
 MOTOR WEIGHT: 13.85 LBS.
 ENVIRONMENT: WET
 INSULATION CLASS: B

MOTOR NUMBER		REV.	
7126 0464		31	
B	LA	A	S
C	C	E	B
A	A	A	A
00	26	33	V
07	BC	6	9
0	0	0	0