

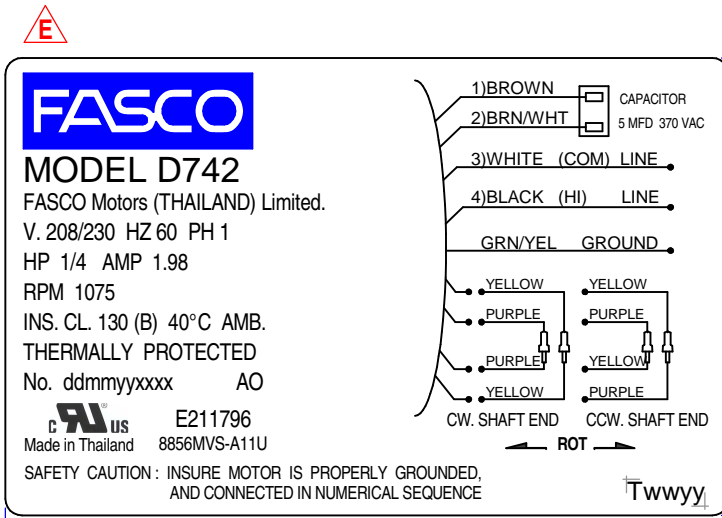
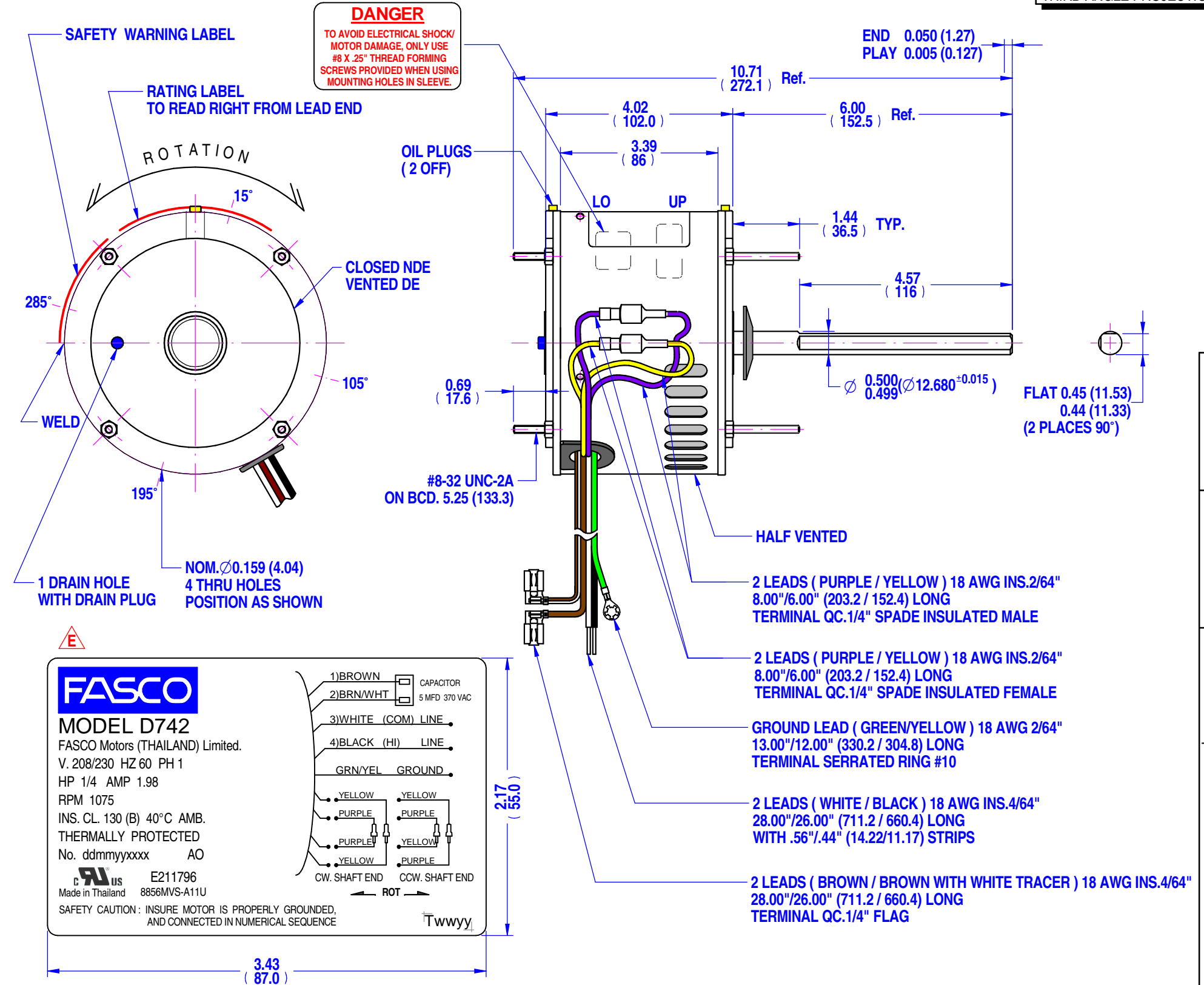
MOTOR SPECIFICATION

8856MVS-A11U

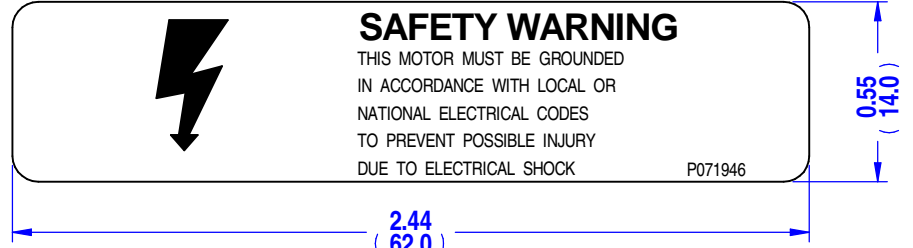
Q.R. No.	Y005164		CUSTOMER NO.	D742		
CUSTOMER	FASCO USA					
MOTOR RATING	VOLTS	208/230	Hz	60	Ph	1
	Duty	S1 AOM		RPM.	1075/3SP	1.98
	AMPS	E		NOM. OUTPUT	262 WATTS (1/4 HP)	
ROTATION	REVERSIBLE					
CAPACITOR	START	-----		μF/V	RUN	5/---
ENCLOSURE	DRIPPROOF					
MOTOR TYPE	PSC	INSULATION CLASS	130 (B)			
THERMAL PROTECTION	AUTO RESET OVERLOAD					
APPLICATION	FAN AXIAL - SHAFT HORIZONTAL					
BEARING D.E.	SLEEVE		LUBRICATION	PERMAWICK OPERA.TEMP		
BEARING N.D.E.	SLEEVE		-15° ~ 90° C			
SUPPLY LEAD	AS SHOWN					
EARTH PROVISION	SUPPLIED					
BASIC BUILD SPECIFICATION	305-881-26	PAINT/ COLOUR	PC GREY PLAIN E/SHIELDS			
PERFORMANCE SPECIFICATION	SP88033-01	RATING LABEL	AS SHOWN			
CONNECTION DIAGRAM	AS SHOWN	RATING LABEL	AS SHOWN			

FINAL INSPECTED MOTORS MUST COMPLY WITH ELECTRIC MOTOR VIBRATION SPECIFICATION (ES049)

THIRD ANGLE PROJECTION



NOTE : DIMENSIONS SHOWN INCH (mm.)
STK - 32



SPECIAL REQUIREMENTS:

- CAPACITOR SUPPLIED BY CUSTOMER.
- DO NOT PACK MOTOR IN PLASTIC BAG.
- PUSH AND PULL SHAFT TO CENTRALIZE WASHER SLINGER.
- STAMP FDC PART NUMBER FDC-D742 ON THE BULK PACK.
- ADD SAFETY BOOK P/N 398-063-02 IN ALL INDIVIDUAL CARTON.
- SCREW (SM13-13 / 4 EA) AND WASHER LOCK (SM19-1 / 4 EA) TO BE PACKED IN PLASTIC BAG AND PUT INTO INDIVIDUAL CARTON WITH MOTOR, IN CASE OF SINGLE PACKING

UNLESS OTHERWISE SPECIFIED : DIMENSIONS ARE IN MM. TOLERANCES		MOTOR WEIGHT	5.4 kg.
DECIMALS	ANGULAR	DRAWN	muntana 22/10/2013
.X ± 1.0	± 30'	CHECKED	Pipat 24/05/2018
.XX ± 0.1		RELEASED	Suksakorn 24/05/2018
THIS DRAWING REMAINS THE PROPERTY OF FASCO MOTORS AND MAY NOT BE USED, COPIED OR ISSUED WITHOUT WRITTEN PERMISSION FROM FASCO MOTORS		SCALE	N.T.S.

 29/7-8 MOO 3, BANGKRUAY - SAINOI Rd., BANGKRANG, MUANG NONTABURI DISTRICT, NONTABURI 11000 THAILAND	FRAME	MOTOR	
	STATUS	S033:8856V-262-MCX:FDC	
	SHEET	DWG. NO.	REVISION
	A3	8856MVS-A11U	E

MIC1805287 By: Muntana Date: 23/05/2018 MIC E: change AMP on name plate and label packing from 2.1 Note: to 1.98 Amp