

NOTES:

1. STATOR LOCATION DIMENSION IS FROM SLEEVE EDGE (OPPOSITE LEAD END) TO STATOR STEEL 91/89.
2. STATOR STACK 1".
3. PRESS STATOR SO THAT NOTCH LINES UP WITH WELD SEAM OF SLEEVE AND LEADS EXIT APPROX. AS SHOWN.
4. THRU AIR SPACING BETWEEN WIRE AND METAL .094 MIN.
5. TIE BOLT TORQUE TOLERANCE 13-17 IN. LBS.
6. CONNECT THE 2 YELLOW REV. LEADS TOGETHER AND CONNECT THE 2 PURPLE REV. LEADS TOGETHER. THIS WILL GIVE CCWLE ROTATION.
7. SALES TO SPECIFY ON P.O. WHICH PACK TO USE.

ECO	REV.	DATE	SPEC/CHECK
635868	34	03-23-06	GAE/GAE
640445	35	09-15-09	GAE/GAE
642962	36	3-16-12	NJP/NJP
632736	33	3-30-04	MKR/MKR

7 1/2 x 4 1/2 x 3 1/2 R

A. SEE PACKAGING MANUAL PAGE 3 FOR PACKAGING PROCEDURE.

1 MOTOR/CARTON;  
21 MOTORS/LAYER;  
6 LAYERS/PALLET;  
126 MOTORS/PALLET.

B. SEE DRAWING, 8785 6079, SHEET 1, FOR PALLET LAYOUT.

C. CENTER LABEL, 6119 6168, ON END OF CARTON.

D. PLACE PAMPHLET, 6122 4579, IN CARTON WITH MOTOR.

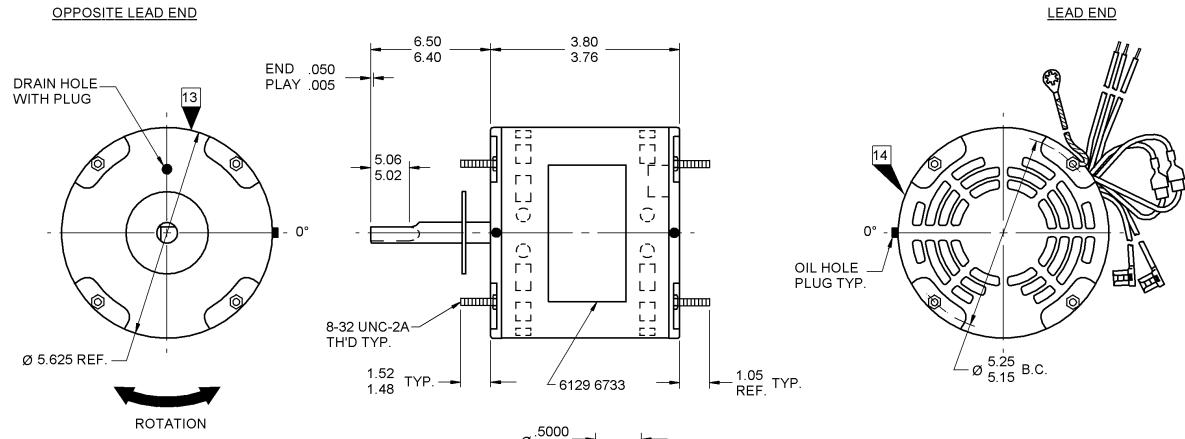
7 1/2 x 4 1/2 x 3 1/2 C

7 1/2 x 4 1/2 x 3 1/2 Z

If Printed, this is an Uncontrolled Document

PRODUCTION TEST AT IDLE 230 VOLTS 60 HZ		MOTOR SPEED	PERFORMANCE TEST 230 VOLTS 60 HZ 1 PH 1/5 HP CAP. 5 MFD 370 VAC												
AMP	WATT		IDLE				LOADED				LOCKED		BREAK		
			RPM	AMP	WATT	OZ/FT	RPM	AMP	WATT	OZ/FT	AMP	WATT	OZ/FT		
.66	— .54	133.1	— 108.9	HIGH	1191	.6	121	18.7	1075	1.3	295	8.0	2.3	484	21.8
.33	— .27	79.2	— 64.8	LOW	1190	.3	72	12.0	1075	.8	191	5.8	1.6	321	14.4
HI-POT TEST 2000 VOLTS															
MAX LEAKAGE CURRENT 5 mA															
TYPICAL PERFORMANCE SHOWN ABOVE FOR CCWLE ROTATION.															

7126 0467 MA



LEAD DATA: 18 GA. 4/64" INS. 105° C THERMO. WHITE, BLACK AND RED LINE LEADS WITH .567".44" STRIPS. BROWN AND BRN/WHIT CAP. LEADS WITH 1/4" FLAG TERMINALS. ALL 28.00"/26.00" LONG.

REV. LEAD DATA: 18 GA. 2/64" INS. 105° C THERMO. 1-PURPLE LEAD 8.50"/6.50" LONG AND 1-PURPLE AND 2-YELLOW LEADS 6.50"/4.50" LONG. ALL WITH 1/4" PRE-INSULATED Q.C. TERMINALS.

GROUND LEAD DATA: 18 GA. 2/64" INS. 105° C THERMO. GRN/YEL 13.00"/12.00" LONG WITH A #10 SERRATED RING TERMINAL.

IF MOUNTING MOTOR HORIZONTALLY, 0° MUST BE AT TOP OF MOTOR ±60°.

**FASCO** FASCO INDUSTRIES, INC. MOTOR DIVISION ASSEMBLED IN MEXICO

THERMALLY PROTECTED MODEL D719

V. 208/230 HZ 60 PH 1 ROT → ←

HP 1/5-1/8 TYPE U26B1 CAP 5 MFD 370 VAC

AMP 1.3-.8 TNS CL B 60° C ANB

RPM 1075 (2 SPD) AD 7126-0467

ROTATION INSTRUCTIONS

CW → CW

SHAFT END → SHAFT END

PURPLE → PURPLE

PURPLE → YELLOW

YELLOW → YELLOW

YELLOW → PURPLE

CONNECTION DIAGRAM

BROWN → CAPACITOR

BRN/WHIT → LINE

WHITE → LINE

BLACK-HI → LINE

RED-LOW → LINE

GRN/YEL → GROUND

**SAFETY WARNING**

THIS MOTOR MUST BE GROUNDING IN ACCORDANCE WITH LOCAL OR NATIONAL ELECTRICAL CODES TO PREVENT POSSIBLE INJURY DUE TO ELECTRICAL SHOCK.

DATE/BAR CODE AREA PER 8882 6003

6129 6733,R REV. 13

LOCATE C OF NAMEPLATE ON C OF SLEEVE TO READ RIGHT FROM LEAD END OF MOTOR CENTER AT 0°.

SIZE 3.50 X 2.00

SPECIAL INSTRUCTIONS: SHAFT IS BONDERIZED. ROTOR IS RUSTPROOFED.

DRAIN HOLE IN O.L.E. END SHIELD TO HAVE A PLUG. PAMPHLET PACKED WITH MOTOR.

MOTORS PACKED MAX. PER SKID: PALLET PACK, 126 CARTON PACK, TRAY PACK.

CUSTOMER: FASCO DISTRIBUTING CO.

PART NUMBER: D719

APPLICATION: DIST SALES

FINISH COLOR: GRAY

MOTOR WEIGHT: 9.40 LBS.

ENVIRONMENT: WET

INSULATION CLASS: B

PROPRIETARY: DO NOT DUPLICATE OR DISCLOSE TO THIRD PARTIES WITHOUT WRITTEN PERMISSION OF FASCO IND. INC., ELDON MO.

FASCO INDUSTRIES, INC. MOTOR DIVISION ELDON PLANT

MOTOR TYPE	MOTOR NUMBER	REV.
P.S.C.	7126 0467 R	36

B	LA	FR	A	S	C	E	B	A
00	26	30	V	04	BU	6	E	0