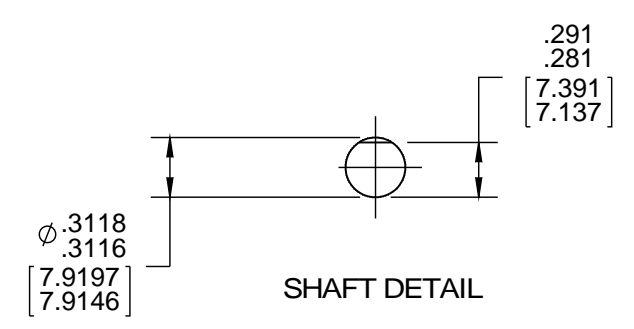
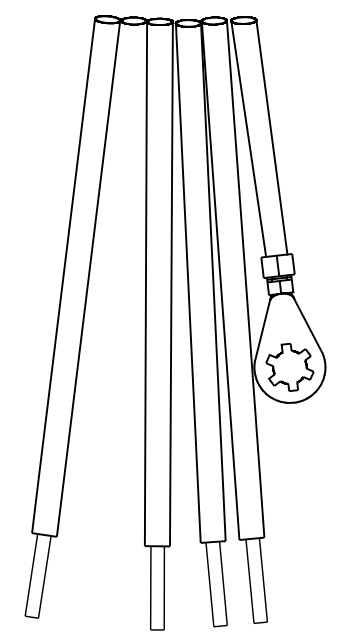


ROTATION



LEAD MATERIAL
 18 GA. 125°C, 2/64 INSUL.
 X-LINKED POLY, (5) BLK/BLU/ORN/RED/YEL
 37.00/35.00[939.80/889.00] LONG
 .56/.44[14.22/11.18] IN. STRIP

GROUND LEAD
 18 GA. 125°C, 2/64 INSUL.
 X-LINKED POLY, GRN/YEL
 13.00/11.00[330.20/279.40] LONG
 RING TERM. 8902-0157
 AMP #350436-2



SAFETY WARNING
 This motor must be grounded in accordance with local or national electrical codes to prevent possible injury due to electrical shock

AVERTISSEMENT DE SÉCURITÉ
 Ce moteur doit être fondée sur conformément à la réglementation locale ou national électrique codes pour prévenir d'éventuelles blessures en raison de choc électrique

00464537

FASCO Fasco Industries, Inc. Motor Division
 Assembled In Mexico
 No. 71732167 TYPE U73B1 T.P. AO
 115/208-230 V 60 Hz Class B

Model D672B E40513
 Sealed Ball Bearing 1/15 HP
 Max Amb 40°C 1550 RPM

00464625

Connection Diagram

115V	208-230V
Orn — Line	Orn — Line
Blk — Ins	Blk — Ins
Red — Ins	Red — Ins
Blu — Line	Blu — Line
Yel — Line	Yel — Line
	Grn/Yel — Grd

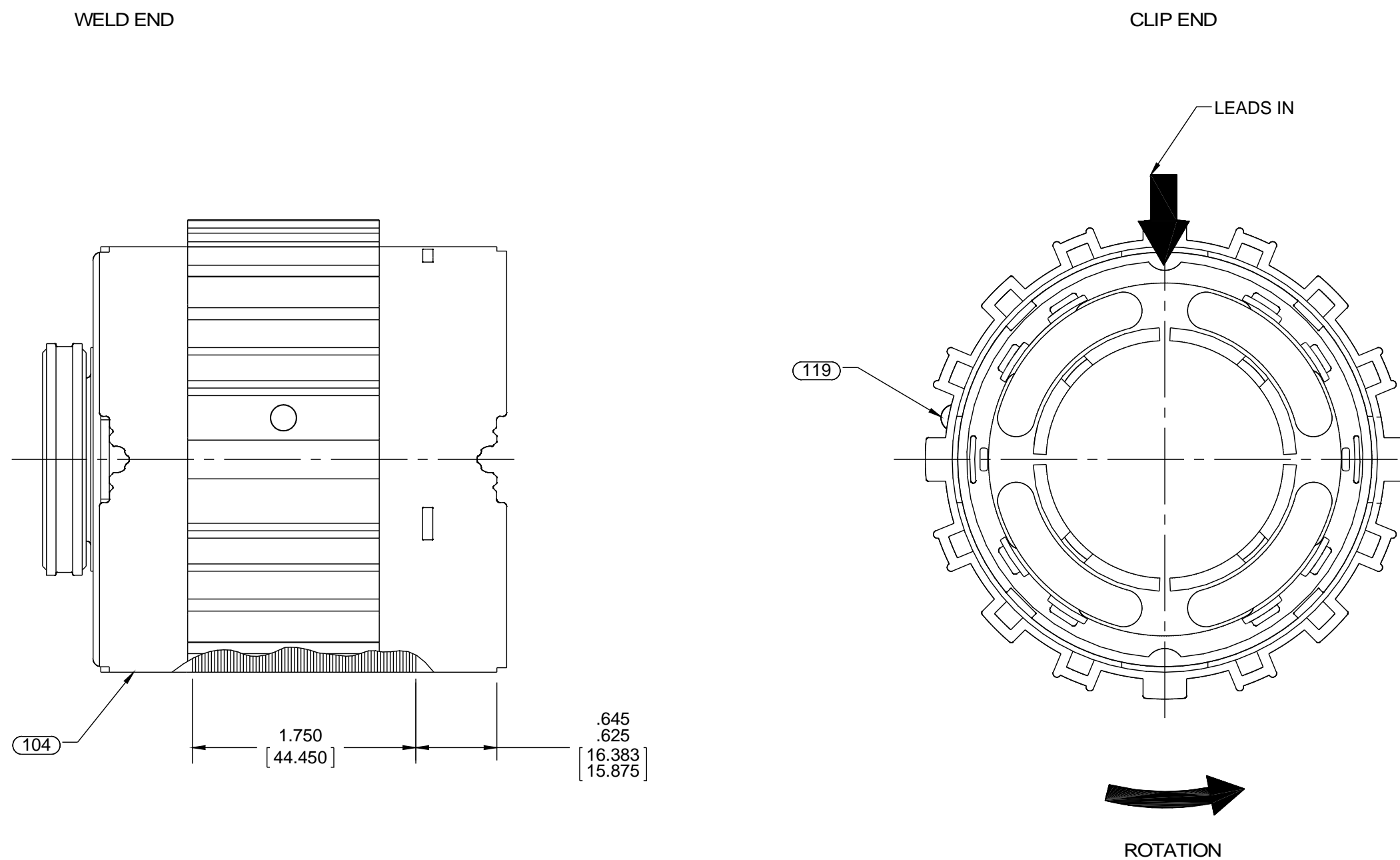
- NOTES:
- MOTOR HAS 416 S.S. SHAFTING.
 - SHIP SEPARATE: 2500376-001(EPC P.N.) BAG ASSY.
 - NO PACKAGING TAPE OVER CARTON LABEL.

CUSTOMER:	FASCO DIST.	APPLICATION:	COUNTER SALES								
CUSTOMER PN:	D672B	MOTOR WEIGHT:									
UP		ENVIRONMENT:	DAMP								
HORIZONTAL	MOTOR TYPE		REFERENCE SAMPLE								
	SHADED POLE		X-0006351-2								
DOWN	B 00	LA 73	FR 28								
	A V	S 07	C PC								
	E 9	B 0	A 0								
TYPICAL PERFORMANCE AT 115/208-230 VOLTS 60 HZ											
MOTOR SPEED	IDLE			LOADED			LOCKED			BREAK	
	RPM	AMP	WATT	IN OZ	RPM	AMP	WATT	IN OZ	AMP	WATT	IN OZ
208V	1789	.67	65	35.4	1550	.84	112	23.6	1.21	153	38.2
230V	1786	.75	81	44.2	1550	.94	141	29.8	1.39	198	48.2
115V	1787	1.51	82	44.2	1550	1.90	142	29.6	2.78	197	48.0

DRAWING REVISION	REVISION BY	DATE	TOLERANCES UNLESS OTHERWISE SPECIFIED:	DRAWN BY	REGAL™ Regal Beloit America, Inc.	
E	M.GU	03/07/2016	DEC. INCH mm ANGLE	M.GU		
ECO-0097887	APPROVED BY	DATE	.X ±0.1 [±2.5]	DATE	03/07/2016	DESCRIPTION
SEE ECO			.XX ±0.01 [±0.25]	APPROVED BY	C.ZHANG	MODEL-SFHP-3.3
COPYRIGHT REGAL BELOIT AMERICA, INC. ALL RIGHTS RESERVED. PROPRIETARY AND CONFIDENTIAL INFORMATION - THIS DOCUMENT IS THE PROPERTY OF REGAL BELOIT AMERICA, INC. (OWNER) AND CONTAINS OWNER'S PROPRIETARY INFORMATION. ANY PERSON, CORPORATION OR OTHER FIRM RECEIVING IT IS DEEMED, BY RECEIVING IT, TO AGREE THAT IT, AND/OR ANY PART OF IT, SHALL NOT BE DISCLOSED TO ANY PERSON, CORPORATION OR OTHER ENTITY, DUPLICATED, AND/OR USED, EXCEPT AS EXPRESSLY APPROVED IN WRITING IN ADVANCE BY OWNER. THIS DOCUMENT SHALL BE RETURNED TO OWNER UPON REQUEST. IT MAY BE SUBJECT TO CERTAIN RESTRICTIONS UNDER APPLICABLE EXPORT CONTROL LAWS AND REGULATIONS.			.XXX ±0.0005 [±0.127]	DATE	03/07/2016	MATERIAL
			.XXXX ±0.0005 [±0.0127]	REFERENCE		PROCESS/FINISH
			REMOVE BURRS & BREAK SHARP EDGES: 003/015 [0.076/381] X 45° CORNER FILLETS: R.02 [51] MACHINED SURFACES: 125 INCH mm 3.2 INCH mm SHOWN IN [BRACKETS]	THIRD ANGLE PROJECTION	SIZE	DRAWING NUMBER
					C	71732167
						SHEET 1 OF 2

NOTES:

- 1. MAXIMUM TORQUE REQUIRED TO TURN MOTOR SHAFT IS 3/8 INCH-OUNCE.
- 2. ASSEMBLE SPRING BETWEEN WASHER AND BEARING ON WELD END, WITH SPRING FINGERS TOWARD BEARING.
- 3. ASSEMBLE BALL BEARINGS TO BEARING RETAINERS PER 88834419.
- 4. DRILL PILOT HOLE WITH A #37 DRILL .300/.275[7.620/6.985] DEEP AT CENTER OF DRILL PIN COOLING BAND SECURELY TO STATOR AND SLEEVE IN ONE PLACE.



BLAST COOLED SPECIFICATIONS

- 1. FAN MUST TRACK WITHIN .035[.889] AND HAVE .10[2.54] MIN. CLEARANCE TO BEARING BOSS AFTER PRESS ON OPERATION.
- 2. ASSEMBLE COOLING CASE PER PROCESS STANDARD.
- 3. DIMENSION OVER ENDPLATES TO BE 3.31/3.27[84.07/83.06].

PACKING SPECIFICATIONS

- 1. PACK PER 88834200. 1 PER CONTAINER, 40 PER LAYER, 6 LAYERS, 240 MAX. PER PALLET.
- 2. PLACE FILLER TUBE OVER SHAFT EXTENSION AND PLACE IN CARTON.
- 3. CARTON LABELS MUST ALL FACE ONE DIRECTION TOWARD THE OPEN OPEN OF THE PALLET. SEE 88834408.
- 4. PLACE (1) FLAT AND ON PALLET, (1) BETWEEN EACH LAYER AND (1) ON TOP.

DRAWING REVISION E	REVISION BY M.GU	DATE 03/07/2016	TOLERANCES UNLESS OTHERWISE SPECIFIED:		DRAWN BY M.GU	Regal Beloit America, Inc.
ECO ECO-0097887	APPROVED BY	DATE	DEC. .X ±0.1 [±2.5]	ANGLE ±0.5°	DATE 03/07/2016	
ECO DESCRIPTION SEE ECO			.XX ±0.01 [±0.25]		APPROVED BY C.ZHANG	DESCRIPTION MODEL-SFHP-3.3
COPYRIGHT REGAL BELOIT AMERICA, INC. ALL RIGHTS RESERVED. PROPRIETARY AND CONFIDENTIAL INFORMATION - THIS DOCUMENT IS THE PROPERTY OF REGAL BELOIT AMERICA, INC. ('OWNER') AND CONTAINS OWNER'S PROPRIETARY INFORMATION. ANY PERSON, CORPORATION OR OTHER FIRM RECEIVING IT IS DEEMED, BY RECEIVING IT, TO AGREE THAT IT, AND/OR ANY PART OF IT, SHALL NOT BE DISCLOSED TO ANY PERSON, CORPORATION OR OTHER ENTITY, DUPLICATED, AND/OR USED, EXCEPT AS EXPRESSLY APPROVED IN WRITING IN ADVANCE BY OWNER. THIS DOCUMENT SHALL BE RETURNED TO OWNER UPON REQUEST. IT MAY BE SUBJECT TO CERTAIN RESTRICTIONS UNDER APPLICABLE EXPORT CONTROL LAWS AND REGULATIONS.			.XXX ±0.0005 [±0.127]		DATE 03/07/2016	
			.XXXX ±0.0005 [±0.0127]		REFERENCE	MATERIAL
			REMOVE BURRS & BREAK SHARP EDGES: .003/.015 [0.076/.381] X 45°		THIRD ANGLE PROJECTION	PROCESS/FINISH BLACK
			CORNER FILLETS: R.02 [51]		SIZE C	DRAWING NUMBER 71732167
			MACHINED SURFACES: 125/3.2			SHEET 2 OF 2
			mm SHOWN IN [BRACKETS]			