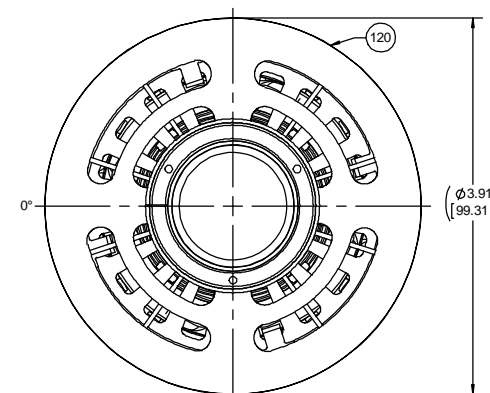
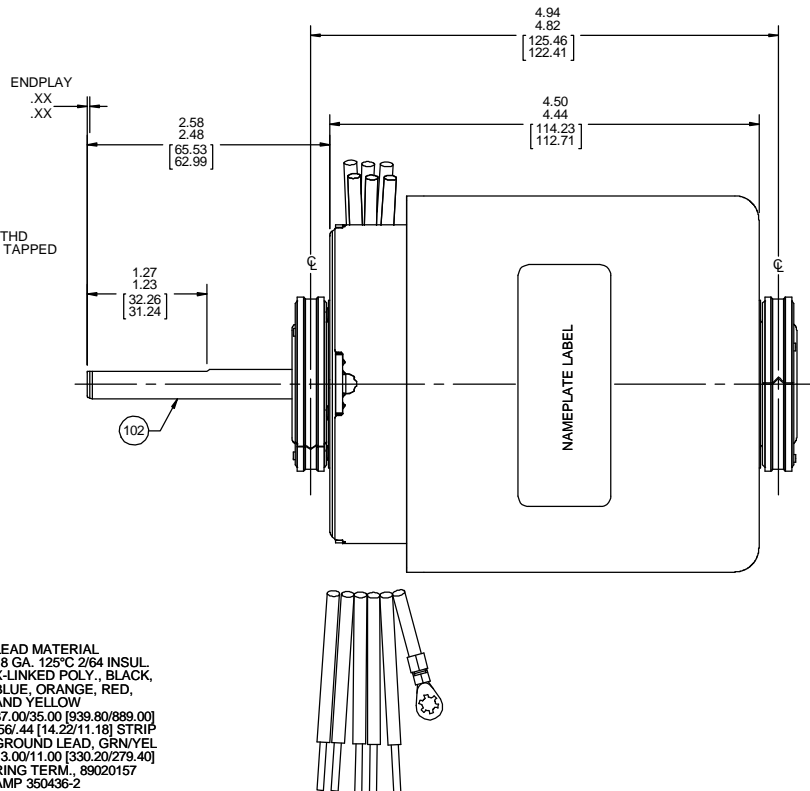
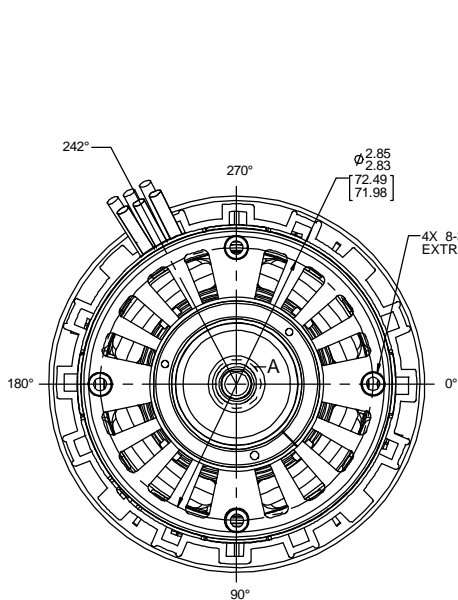
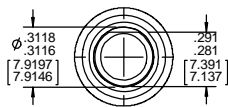


FRONT END

BACK END

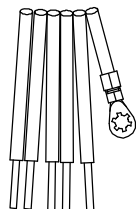


ROTATION



DETAIL A
SHAFT DETAIL

LEAD MATERIAL
18 GA, 125°C/264 INSUL,
X-LINKED POLY., BLACK,
BLUE, ORANGE, RED,
AND YELLOW
37.00/35.00 [939.80/889.00]
.56/.44 [14.22/11.18] STRIP
GROUND LEAD, GRN/YEL
13.00/11.00 [330.20/279.40]
RING TERM. 89020157
AMP 350436-2



- NOTES:
1. MOTOR HAS 416 SS SHAFT.
2. NO PACKAGING TAPE OVER CARTON LABEL

CUSTOMER:		FASCO DIST.		APPLICATION:		COUNTER SALES					
CUSTOMER PN:		D671B		MOTOR WEIGHT:							
UP				ENVIRONMENT:		DAMP					
HORIZONTAL		MOTOR TYPE SHADED POLE				REFERENCE SAMPLE					
DOWN		B	LA	FR	A	S	C	E	B	A	
		00	73	28	V	07	PC	9	0	0	
TYPICAL PERFORMANCE AT 115/208-230 VOLTS 60 HZ											
IDLE					LOADED				LOCKED		BREAK
MOTOR SPEED	RPM	AMP	WATT	IN OZ	RPM	AMP	WATT	IN OZ	AMP	WATT	IN OZ
208V/60	1789	.67	65	35.4	1550	.84	112	23.6	1.21	153	38.2
230V/60	1786	.75	81	44.2	1550	.94	141	29.8	1.39	198	48.2
115V/60	1787	1.51	82	44.2	1550	1.90	142	29.6	2.78	197	48.0

61305568

SAFETY WARNING
This motor must be grounded in accordance with local or national electrical codes to prevent possible injury due to electrical shock

AVERTISSEMENT DE SÉCURITÉ
Ce moteur doit être fondé sur conformément à la réglementation locale ou national électrique codes pour prévenir d'éventuelles blessures en raison de choc électrique

APPLY IN CONVIENT LOCATION
TO READ RIGHT FROM BACK END

00464537

00464625

Assembled in Mexico
No. 71732168 TYPE U73B1 AO E40513
115/208-230 V 60 Hz Class B 1550 RPM 1.9/.84-.94 A
Model D671B Thermally Protected Reference 1/15 HP Max Amb: 40°C
Sealed Ball Brg

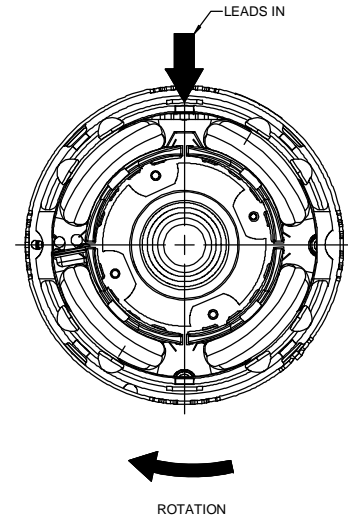
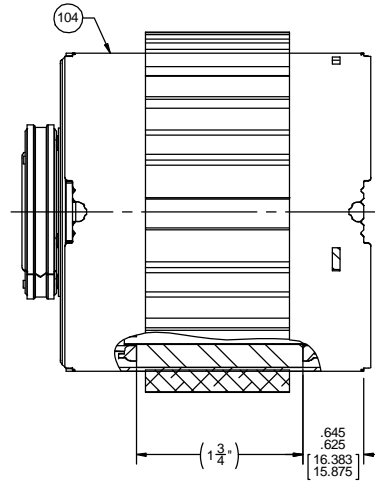
Connection Diagram
115 V 208-230 V
Orn --- Line Orn --- Line
Blk --- Ins Blk --- Ins
Red --- Ins Red --- Ins
Blu --- Line Blu --- Line
Yel --- Line Yel --- Line
Grn/Yel --- Grd

DRAWING REVISION	REVISION BY	DATE	TOLERANCES UNLESS OTHERWISE SPECIFIED:	DRAWN BY	DESCRIPTION
BA	SED	8/14/2017	DEC. INCH mm ANGLE	KSA	REGAL™ Regal Beloit America, Inc.
ECO-0129015	APPROVED BY PLA	8/14/2017	.X ±0.1 [2.5] \$1° .XX ±0.01 [0.25] .XXX ±0.005 [0.127] .XXXX ±0.0005 [0.0127]	4/27/2016	OUTLINE MOTOR ASSY
CORRECTED CARTON P/N AND PACKING QUANTITIES <small>PROPRIETARY AND CONFIDENTIAL INFORMATION. THIS DOCUMENT IS THE PROPERTY OF REGAL BELOIT AMERICA, INC. CONSENT AND CONTAINING OWNERS PROPRIETARY INFORMATION. ANY PERSON, CORPORATION OR OTHER FIRM RECEIVING IT IS DEEMED TO HAVE AGREED TO ACCEPT THAT IT, AND/OR ANY PART OF IT, SHALL NOT BE DISCLOSED TO ANY PERSON, CORPORATION OR OTHER ENTITY. DUPLICATED, AND/OR USED, EXCEPT AS EXPRESSLY APPROVED IN WRITING IN ADVANCE BY OWNER. THIS DOCUMENT SHALL BE RETURNED TO OWNER UPON REQUEST. IT MAY BE SUBJECT TO CERTAIN RESTRICTIONS UNDER APPLICABLE EXPORT CONTROL LAWS AND REGULATIONS.</small>				4/27/2016	
MACHINED SURFACES: 125/3.2 INCH/ m/ty				REFERENCE	MATERIAL
mm SHOWN IN (BRACKETS)			THIRD ANGLE PROJECTION	SIZE	DRAWING NUMBER
C					71732168
					PROCESS/FINISH BLACK PAINT
					SHEET 1 OF 2

- NOTES:
1. STAKE STATOR TO MAIN FRAME PER 88830264.
 2. MAXIMUM TORQUE REQUIRED TO TURN MOTOR SHAFT IS 3/8 INCH-OUNCE.
 3. ASSEMBLE SPRING BETWEEN WASHER AND BEARING ON WELD END, WITH SPRING FINGERS TOWARD BEARING.
 4. ASSEMBLE BALL BEARING TO BEARING RETAINERS PER 88834419.

FRONT END

BACK END



BLAST COOLED SPECIFICATIONS

1. FAN MUST TRACK WITHIN .035 [.889] AND HAVE .10 [2.54] MIN. CLEARANCE TO BEARING BOSS AFTER PRESS ON OPERATION.
2. ASSEMBLE COOLING CASE PER 88834269.
3. DIMENSION OVER END FRAMES TO BE 3.06/3.02 [77.72/76.71].

PACKING SPECIFICATIONS

1. PLACE (1) FILLER PAD ON PALLET, (1) BETWEEN EACH LAYER, AND (1) ON TOP OF PALLET LOAD.
2. PLACE (4) PC 208 STUDS AND (1) PC 218 INSTRUCTION SHEET INTO PC 204 BAG. PLACE (1) BAG IN EACH MOTOR CARTON.
3. PACK 1 UNIT PER CONTAINER, 40 CONTAINERS PER LAYER, 6 LAYERS PER PALLET, 240 MAX. AMT. PER PALLET. PER 88834200 AND 88834408.
4. CARTON LABELS MUST ALL FACE ONE DIRECTION TOWARD THE OPEN END OF THE PALLET. SEE 88834408.

DRAWING REVISION BA	REVISION BY SED	DATE 8/14/2017	TOLERANCES UNLESS OTHERWISE SPECIFIED: DEC. INCH mm ANGLE	DRAWN BY KSA	Regal Beloit America, Inc.
ECO ECO-0129015	APPROVED BY PLA	DATE 8/14/2017	.X ±0.1 [±2.5] ±1° .XX ±0.01 [±0.25] .XXX ±0.005 [±0.127] .XXXX ±0.0005 [±0.0127]	DATE 4/27/2016	
ECO DESCRIPTION CORRECTED CARTON P/N AND PACKING QUANTITIES COPYRIGHT REGAL BELOIT AMERICA, INC. ALL RIGHTS RESERVED. PROPRIETARY AND CONFIDENTIAL INFORMATION. THIS DOCUMENT IS THE PROPERTY OF REGAL BELOIT AMERICA, INC. FORMERLY AND CONTAINS OWNERS PROPRIETARY INFORMATION. ANY PERSON, CORPORATION OR OTHER FIRM RECEIVING IT IS DEEMED BY RECEIVING IT, TO AGREE THAT IT, AND/OR ANY PART OF IT, SHALL NOT BE DISCLOSED TO ANY PERSON, CORPORATION OR OTHER ENTITY, DUPLICATED, AND/OR USED, EXCEPT AS EXPRESSLY APPROVED IN WRITING IN ADVANCE BY OWNER. THIS DOCUMENT SHALL BE RETURNED TO OWNER UPON REQUEST. IT MAY BE SUBJECT TO CERTAIN RESTRICTIONS UNDER APPLICABLE EXPORT CONTROL LAWS AND REGULATIONS.			APPROVED BY MLS	DESCRIPTION OUTLINE MOTOR ASSY	
			REMOVE BURRS & BREAK SHARP EDGES. .003/.015 [0.076/.381] X 45° CORNER FILLETS: R.02 [.51]	DATE 4/27/2016	MATERIAL
			MACHINED SURFACES: .125/3.2 INCH/mmv	REFERENCE	PROCESS/FINISH BLACK PAINT
			mm SHOWN IN [BRACKETS]	THIRD ANGLE PROJECTION	SIZE DRAWING NUMBER 71732168
					SHEET 2 OF 2