

NOTES

1. THRU AIR SPACING BETWEEN WIRE AND METAL .10 MIN.
2. TIE BOLT TORQUE TOLERANCE 10 - 15 IN. LBS.
3. FOR WASHER SET-UP, SEE CHART C600 0279, DETAIL "H".
4. ASSEMBLE 6129 4832 WARNING LABEL AS SHOWN TO READ RIGHT FROM LEAD END OF MOTOR.

ECO	REV.	DATE	SPEC/CHECK
631216	17	5-19-03	LDC/LDC
638137	18	5-1-08	LDC/LDC
639403	19	4-7-09	MKR/MKR
4008823	20	4/5/2013	NJP/KSA

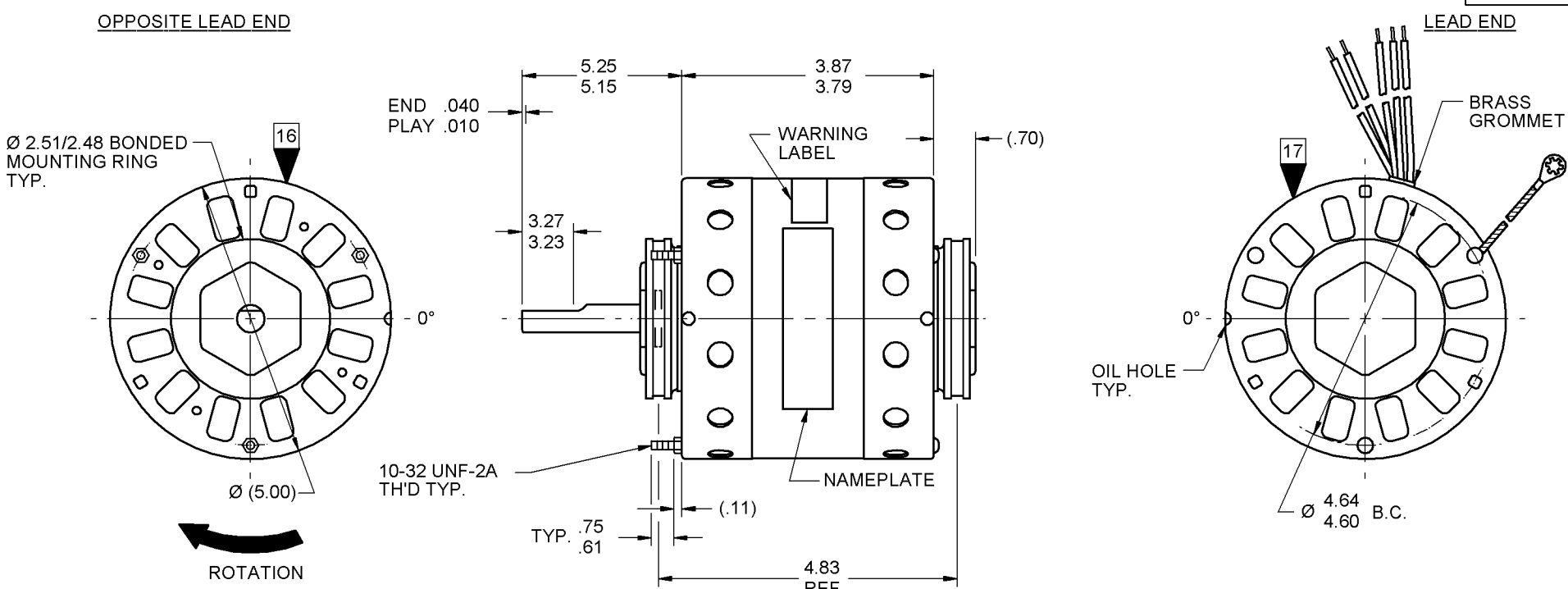
- 71x xxxx
- A. SEE PACKAGING MANUAL PAGE 2 FOR PACKAGING PROCEDURES.
- 1 MOTOR/CARTON;
24 MOTORS/LAYER;
6 LAYERS/PALLET;
144 MOTORS/PALLET.
- B. SEE DRAWING 8785 6079 SH. 1 FOR PALLET LAYOUT.
- C. CENTER LABEL, 6122 9129, ON END OF CARTON.
- D. PLACE PAMPHLET, 6122 4579, IN CARTON WITH MOTOR.
- E. CARTON LABELS MUST ALL FACE ONE DIRECTION TOWARD OPEN END OF THE PALLET. SEE P.S. 8883 4408.
- F. NO PACKING TAPE OVER CARTON LABEL.

71x xxxx C

PRODUCTION TEST AT IDLE 230 VOLTS 60 HZ		MOTOR SPEED	PERFORMANCE TEST 230 VOLTS 60 HZ 1 PH 1/5 HP										
AMP	WATT		IDLE			LOADED				LOCKED			BREAK
			RPM	AMP	WATT	OZ/IN	RPM	AMP	WATT	OZ/IN	AMP	WATT	OZ/IN
3.63 — 2.97	383.9 — 314.1	HIGH	1182	3.3	349	249	1050	3.8	540	93	5.3	693	280
2.97 — 2.43	316.8 — 259.2	M. HIGH	1182	2.7	288	208	1050	3.2	447	78	4.3	553	230
2.64 — 2.16	291.5 — 238.5	M. LOW	1181	2.4	265	190	1050	2.9	405	73	4.0	493	213
2.09 — 1.71	227.7 — 186.3	LOW	1181	1.9	207	161	1050	2.3	325	59	3.1	378	177

HI-POT TEST 2000 VOLTS
MAX LEAKAGE CURRENT 5 mA

7151 2970 MA



LEAD DATA: 18 GA. 2/64" INSUL. 125° C CROSS-LINKED POLY. WHITE, BLACK, BLUE, ORANGE AND RED LEADS 36.00"/34.00" LONG WITH .56"/.44" STRIPS.

GROUND DATA: 18 GA. 2/64" INSUL. 105° C THERMO. GRN/YEL 7.00"/6.00" LONG WITH A # 10 SERRATED RING TERMINAL.

4 6129 4832

SAFETY WARNING

This Motor Must Be Grounded In Accordance With Local Or National Electrical Codes To Prevent Possible Injury Due To Electrical Shock

00464072 00464640

FASCO Fasco Industries, Inc. Motor Division

Assembled In Mexico No. 71512970 TYPE U51 208/230 V 1050 RPM Model D658 Thermally Protected 1/5-1/6-1/7-1/8 HP

AO PH1 (4 SPD)

Connection Diagram

Wht Common
Blk High
Blu Med-High
Orn Med-Low
Red Low

4.0-3.4-3.1-2.4 A

LOCATE Ø OF NAMEPLATE ON Ø OF STATOR TO READ RIGHT FROM LEAD END OF MOTOR CENTER AT 0°.

SPECIAL INSTRUCTIONS: SHAFT IS BONDERIZED. ROTOR IS RUSTPROOFED. PAMPHLET PACKED WITH MOTOR.	
MOTORS PACKED MAX. PER SKID: ___ PALLET PACK, 144 CARTON PACK.	
CUSTOMER: FASCO DISTRIBUTING CO.	PROPRIETARY: DO NOT DUPLICATE OR DISCLOSE TO THIRD PARTIES WITHOUT WRITTEN PERMISSION OF FASCO IND. INC., ELDON MO.
PART NUMBER: D658	FASCO INDUSTRIES, INC. MOTOR DIVISION ELDON PLANT
APPLICATION: DIST. SALES	MOTOR TYPE
FINISH COLOR: GRAY	SHADED POLE
MOTOR WEIGHT: 10.5 LBS.	MOTOR NUMBER
ENVIRONMENT: WET	REV.
INSULATION CLASS: A	7151 2970 20
	B LA FR A S C E B A
	00 51 11 V 08 OA 8 8 0

If Printed, this is an Uncontrolled Document.