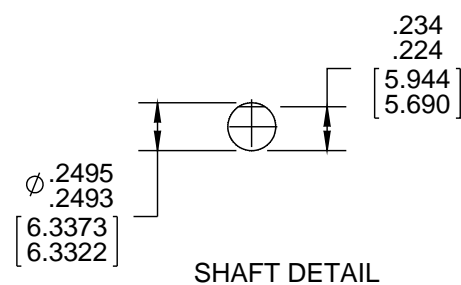


ROTATION



SHAFT DETAIL

LEAD MATERIAL
18 GA. 125°C 2/64 INSUL.
X-LINKED POLY
(1) ORANGE, (1) YELLOW
(1) BLUE, (1) RED (1) BLACK,
10.00/8.00[254.00/203.20] LONG
WITH .56/.44[14.22/11.18] STRIP.

GROUND LEAD MATERIAL
18 GA. 125°C 2/64 INSUL.
X-LINKED POLY, GRN/YEL
13.00/11.00[330.20/279.40] LONG
(2)RING TERM. 8902-0157
AMP 350436-2

SWITCH LEADS
18 GA. 125°C 4/64 INSUL.
X-LINKED POLY, (2) BROWN
16.00/14.00[406.40/355.60] LONG
WITH .56/.44[14.22/11.18] STRIP

SAFETY WARNING
This motor must be grounded in accordance with local or national electrical codes to prevent possible injury due to electrical shock



AVERTISSEMENT DE SECURITE
Ce moteur doit être fondée sur conformément à la réglementation locale ou national électrique codes pour prévenir d'éventuelles blessures en raison de choc électrique

APPLY IN A CONVENIENT LOCATION TO READ FROM BACK END

10002578-001-001

WARNING

WHEN OPERATED ON 460 V, SPECIAL CARE SHOULD BE TAKEN WITH HANDLING, CONNECTIONS AND GROUNDING TO AVOID SHOCK HAZARD.

AVERTISSEMENT

QUAND ON UTILISE DU 460 V, DES PRECAUTIONS SPECIALES DOIVENT ETRE PRISES PENDANT LA MANIPULATION, LE BRANCHEMENT ET LA MISE A LA TERRE PUR PREVENIR LES RISQUES D'ELECTROCUTION.

0046 4537

0046 4179



Fasco Industries, Inc
Motor Division



Connection Diagram

Assembled in Mexico

No. 712112839 TYPE U21B T.P. AO
230/460 V 60 Hz Class B
1.1/.44 A 3000/3430 RPM
Model D653 Sealed Ball Brg
SW125VA-120V SW280-10 E40513
Reference 1/20 HP Max Amb 40°C

230 V 460 V
Orn — Line Orn — Line
Yel — Line Yel — Line
Blu — Line Blu — Ins
Red — Ins Red — Ins
Blk — Ins Blk — Ins
Grn/Yel — Grd
Brn — Switch
Brn — Switch

- NOTES:
- MOTOR LEADS MEASURED FROM TOP OF CONDUIT BOX.
 - MOTOR HAS 416 S.S. SHAFT.
 - NO KNOCKOUTS REMOVED.
 - NO PACKAGING TAPE OVER CARTON LABEL.

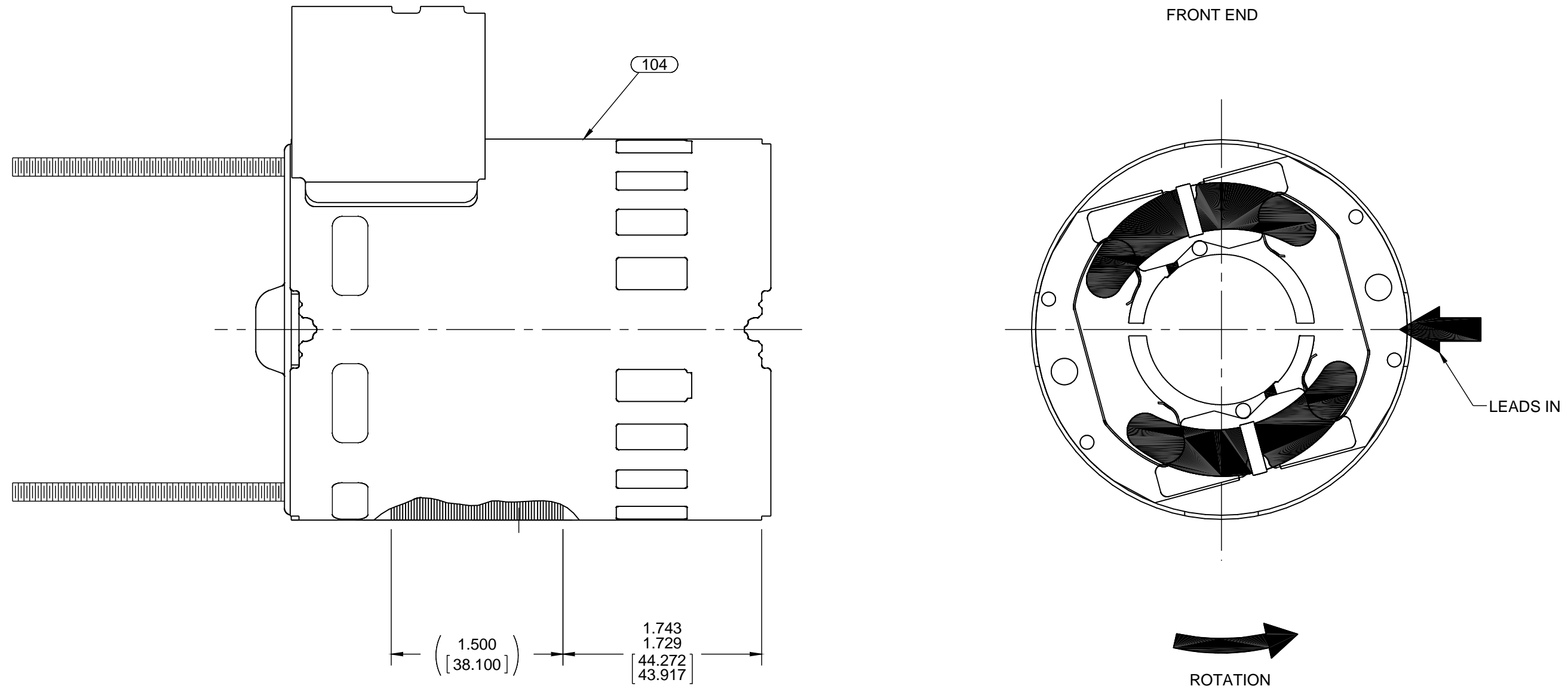
CUSTOMER:	FASCO DIST.	APPLICATION:	COUNTER SALES
CUSTOMER PN:	D653	MOTOR WEIGHT:	-
		ENVIRONMENT:	DAMP

HORIZONTAL	MOTOR TYPE					REFERENCE SAMPLE				
	SHADED POLE					X-0006738-2				
UP	B	LA	FR	A	S	C	E	B	A	
DOWN	00	21	34	F	06	FA	9	0	0	

TYPICAL PERFORMANCE AT 230/460 VOLTS 60 HZ											
MOTOR SPEED	IDLE			LOADED			LOCKED			BREAK	
	RPM	AMP	WATT	IN OZ	RPM	AMP	WATT	IN OZ	AMP	WATT	IN OZ
230 V	3542	.82	98	20.2	3250	.99	148	8.2	1.51	216	27.1
460V	3544	.41	98	20.6	3250	.50	150	8.2	.76	219	27.5

WARNING LABEL TO BE READ RIGHT FROM BACK END

DRAWING REVISION G	REVISION BY J.ZHU	DATE 05-03-2016	TOLERANCES UNLESS OTHERWISE SPECIFIED: DEC. INCH mm ANGLE .X ±0.1 [±2.5] ±1° .XX ±0.01 [±0.25] .XXX ±0.005 [±0.127] .XXXX ±0.0005 [±0.0127]	DRAWN BY M.GU	DATE 07-01-2014	REGAL Regal Beloit America, Inc.
ECO ECO-0101329	APPROVED BY C.ZHANG	DATE 05-03-2016	SEE ECO	DATE 07-01-2014	APPROVED BY A.SUN	DESCRIPTION MODEL-SFHP-3.3
COPYRIGHT REGAL BELOIT AMERICA, INC. ALL RIGHTS RESERVED. PROPRIETARY AND CONFIDENTIAL INFORMATION - THIS DOCUMENT IS THE PROPERTY OF REGAL BELOIT AMERICA, INC. (OWNER) AND CONTAINS OWNER'S PROPRIETARY INFORMATION. ANY PERSON, CORPORATION OR OTHER FIRM RECEIVING IT IS DEEMED, BY RECEIVING IT, TO AGREE THAT IT, AND/OR ANY PART OF IT, SHALL NOT BE DISCLOSED TO ANY PERSON, CORPORATION OR OTHER ENTITY, DUPLICATED, AND/OR USED, EXCEPT AS EXPRESSLY APPROVED IN WRITING IN ADVANCE BY OWNER. THIS DOCUMENT SHALL BE RETURNED TO OWNER UPON REQUEST. IT MAY BE SUBJECT TO CERTAIN RESTRICTIONS UNDER APPLICABLE EXPORT CONTROL LAWS AND REGULATIONS.			REMOVE BURRS & BREAK SHARP EDGES: .003/.015 [0.076/.381] X 45° CORNER FILLETS: R.02 [51] MACHINED SURFACES: 125/3.2 INCH/mm ±1°	DATE 07-01-2014	REFERENCE	MATERIAL
THIRD ANGLE PROJECTION		SIZE C	DRAWING NUMBER 712112839	PROCESS/FINISH BLACK	SHEET 1 OF 2	



SWITCH SPECIFICATIONS

1. PRESS ACTUATOR ASSEMBLY AND THIMBLE SO THAT TOP OF METAL ACTUATOR PLATE IS .568/.548[14.427/13.919] FROM END OF SHAFT.
2. SWITCH MUST BE ADJUSTED TO OBTAIN .035/.025[.889/.635] AIR GAP BETWEEN THIMBLE AND SWITCH IN FULL OPERATING POSITION.
3. ASSEMBLE SWITCH ASSEMBLY AND ACTUATOR PER PROCESS STANDARD.
4. WHEN ASSEMBLING HEYCO, NO SLACK ALLOWED INSIDE SWITCH COVER.
5. SWITCH MUST MAKE CONTACT BETWEEN 1800-2500 RPM AS SPEED INCREASES AND BRAKE 50-500 RPM BELOW ACTUAL MAKE.
6. SWITCH MECHANISM TO GIVE QUIET OPERATION ABOVE 2500 RPM.

PACKING SPECIFICATIONS

NOTES:

1. PACK PER 88834200 AND 88834408. (1) PER CONTAINER, (24) PER LAYER, (6) LAYERS, (144) MOTORS MAX. PER PALLET.
2. PLACE (1) BUSHING IN (1) PLASTIC BAG AND STAPLE CLOSED.
3. PLACE (1) BUSHING AND PLASTIC BAG ASSEMBLY IN EACH CONTAINER MOTOR.
4. CARTON LABELS MUST ALL FACE ONE DIRECTION TOWARD THE OPEN END OF THE PALLET. SEE 88834408.
5. NO PACKING TAPE OVER CARTON LABEL

NOTES:

1. ALL SPACINGS THRU AIR BETWEEN WIRE AND METAL MUST BE AT LEAST: .094[2.388]
2. NO KNOCKOUTS REMOVED.
3. ASSEMBLE LOADING SPRING BETWEEN WASHER AND BEARING ON CLIP END WITH SPRING FINGERS TOWARD BEARING.
4. ASSEMBLE BEARING TO BEARING RETAINER PER WORK CENTER PROCESS.
5. HI POT MOTOR ASSEMBLY AT 2350 VOLTS FOR 1 SECOND.

DRAWING REVISION G	REVISION BY J.ZHU	DATE 05-03-2016	TOLERANCES UNLESS OTHERWISE SPECIFIED:		DRAWN BY M.GU	Regal Beloit America, Inc.
ECO ECO-0101329	APPROVED BY C.ZHANG	DATE 05-03-2016	DEC.	INCH	mm	
ECO DESCRIPTION SEE ECO			.X	±0.1	[±2.5]	±1°
<small>COPYRIGHT REGAL BELOIT AMERICA, INC. ALL RIGHTS RESERVED. PROPRIETARY AND CONFIDENTIAL INFORMATION - THIS DOCUMENT IS THE PROPERTY OF REGAL BELOIT AMERICA, INC. ('OWNER') AND CONTAINS OWNER'S PROPRIETARY INFORMATION. ANY PERSON, CORPORATION OR OTHER FIRM RECEIVING IT IS DEEMED, BY RECEIVING IT, TO AGREE THAT IT, AND/OR ANY PART OF IT, SHALL NOT BE DISCLOSED TO ANY PERSON, CORPORATION OR OTHER ENTITY, DUPLICATED, AND/OR USED, EXCEPT AS EXPRESSLY APPROVED IN WRITING IN ADVANCE BY OWNER. THIS DOCUMENT SHALL BE RETURNED TO OWNER UPON REQUEST. IT MAY BE SUBJECT TO CERTAIN RESTRICTIONS UNDER APPLICABLE EXPORT CONTROL LAWS AND REGULATIONS.</small>			.XX	±0.01	[±0.25]	
			.XXX	±0.005	[±0.127]	
			.XXX	±0.0005	[±0.0127]	
			REMOVE BURRS & BREAK SHARP EDGES: .003/.015 [0.076/.381] X 45°			
			CORNER FILLETS: R.02 [51]			
			MACHINED SURFACES: 125/3.2			
			mm SHOWN IN [BRACKETS]			
DATE 07-01-2014		APPROVED BY A.SUN		DESCRIPTION MODEL-SFHP-3.3		
DATE 07-01-2014		REFERENCE		MATERIAL		PROCESS/FINISH BLACK
THIRD ANGLE PROJECTION		SIZE C		DRAWING NUMBER 712112839		SHEET 2 OF 2