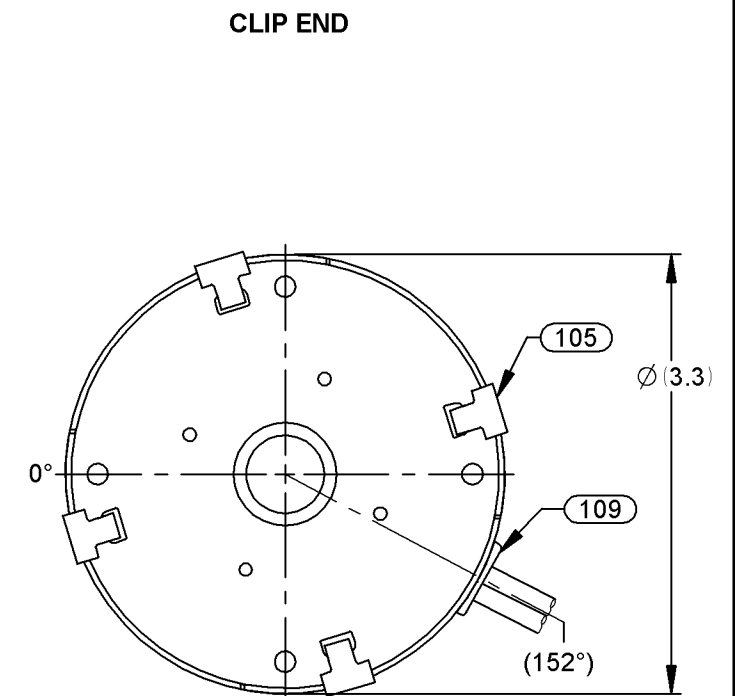
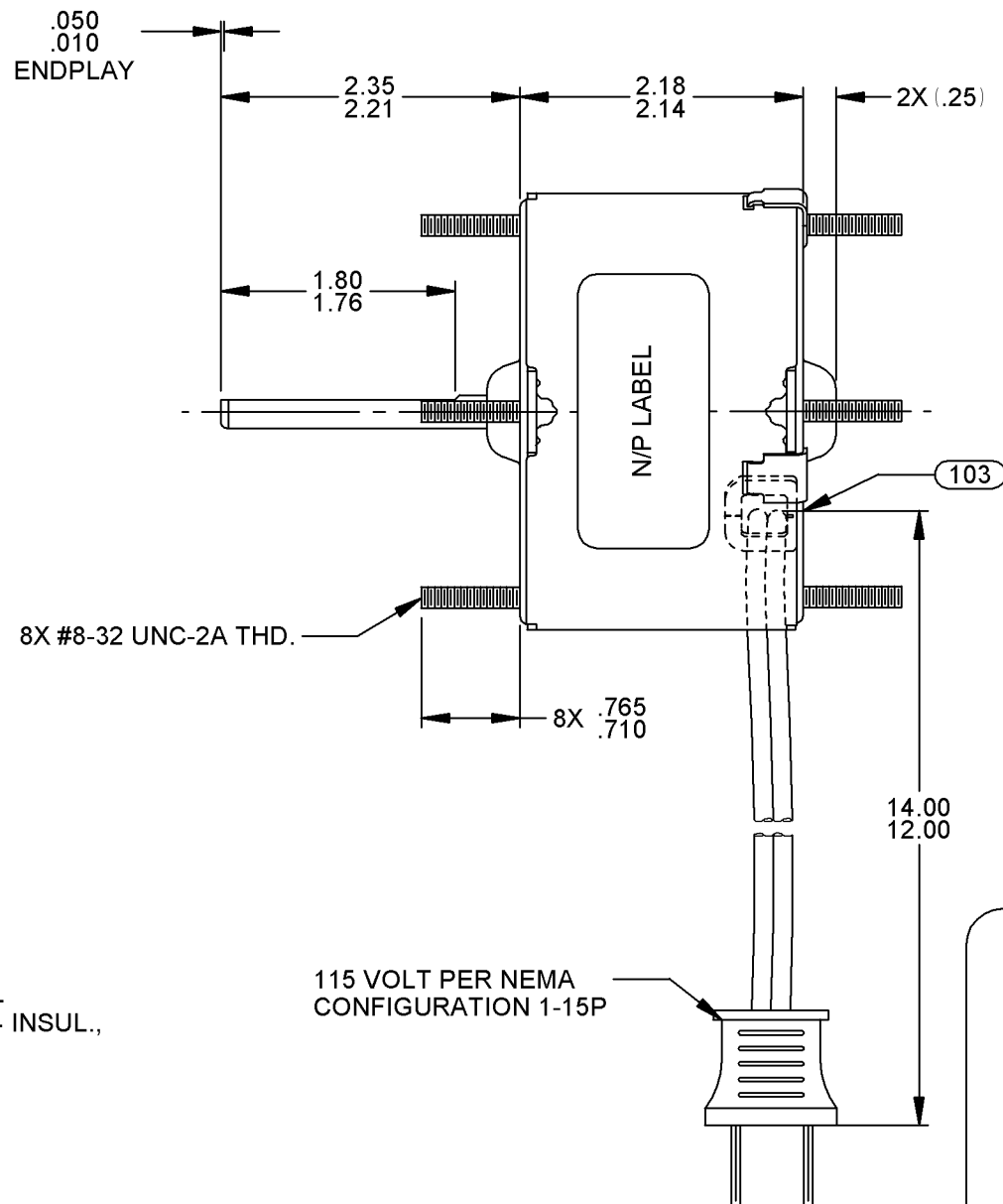
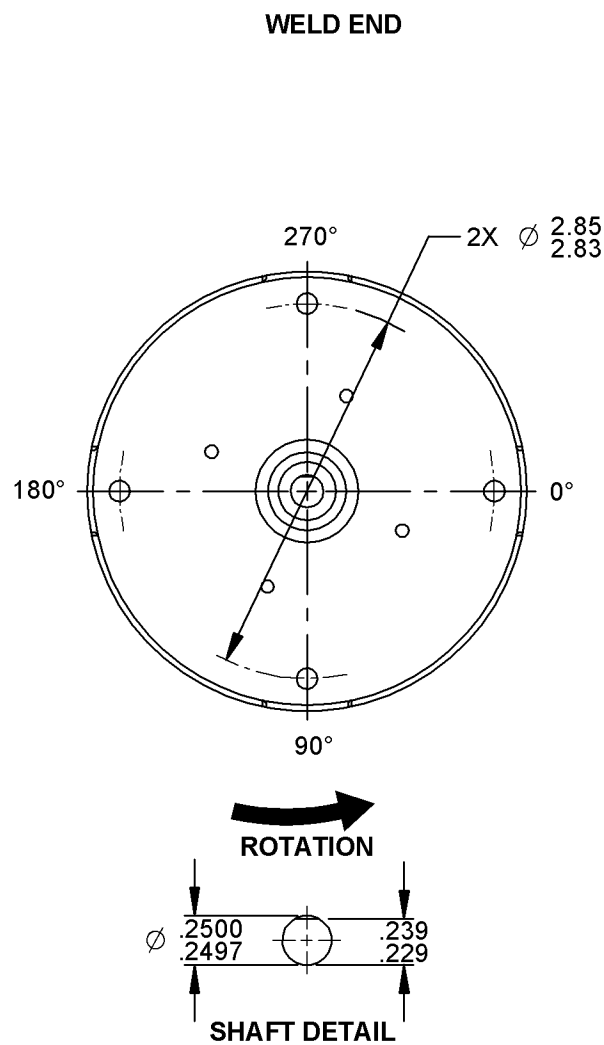


10	REVISED TO POWDER PAINT	SD 7-20-05	11	CHANGED LABEL LAYOUT, AND ADDED PC MARKERS	MLM 11/19/07	12	REMOVED BARCODE FROM AND ADDED CSA NUMBER TO NAMEPLATE	BP 08-10-2010	STANDARD TOLERANCES: ANGULAR +/- 1 DEGREE 2 PLACE DECIMAL +/- .01 3 PLACE DECIMAL +/- .005
----	-------------------------	------------	----	--	--------------	----	--	---------------	---



LEAD MATERIAL
18 GA. 90°C 3/64 INSUL.,
HPN, BLACK

115 VOLT PER NEMA
CONFIGURATION 1-15P

0046-4072

0046-4282



Fasco Industries, Inc.
Motor Division



SAFETY WARNING



This Motor Must Be
Grounded in
Accordance With Local
Or National Electrical
Codes To Prevent
Possible Injury Due To
Electrical Shock

Assembled in Mexico
No. 71638076 TYPE U63B1 T.P. TEAO LR6319
115 V 60 Hz Class B
0.6 A 1550 RPM 1/100 HP
Model D541 Max Amb: 40°C



61299553

NOTES:

1. PACK 270 MOTORS MAX. PER PALLET.
2. NO PACKING TAPE OVER CARTON LABEL.

FRONT SHAFT POSITION		* TYPICAL PERFORMANCE AT 115 VOLTS 60 Hz.										CUSTOMER: FASCO DIST.		FASCO MOTORS GROUP AC MOTOR/BLOWER DIVISION CONFIDENTIAL: DO NOT DUPLICATE OR DISCLOSE TO THIRD PARTIES WITHOUT WRITTEN PERMISSION OF FASCO MOTORS GROUP, AC MOTOR/BLOWER DIVISION.											
HORIZONTAL		MOTOR SPEED	IDLE			LOADED			LOCKED			BREAK	PART NUMBER: D541											APPLICATION: COUNTER SALES	
			R.P.M.	AMP.	WATT	IN.OZ.	R.P.M.	AMP.	WATT	IN.OZ.	AMP.	WATT	IN.OZ.	MOTOR WEIGHT: 2.02 LBS.		MOTOR TYPE					DRAWING NUMBER				
CUSTOMER APPROVAL:			1732	.53	33	9.0	1550	.58	44	4.3	.80	65	11.6	ENVIRONMENT: DRY		SHADED POLE					7163 8076				
SIGNED:														FINISH COLOR: BLACK		REV. 12									
DATE:														DRAWN BY: TAMMY JONES		B	LA	FR	A	S	C	E	B	A	
														DATE DRAWN: MARCH 04, 2002		00	63	30	T	01	OY	5	1	0	