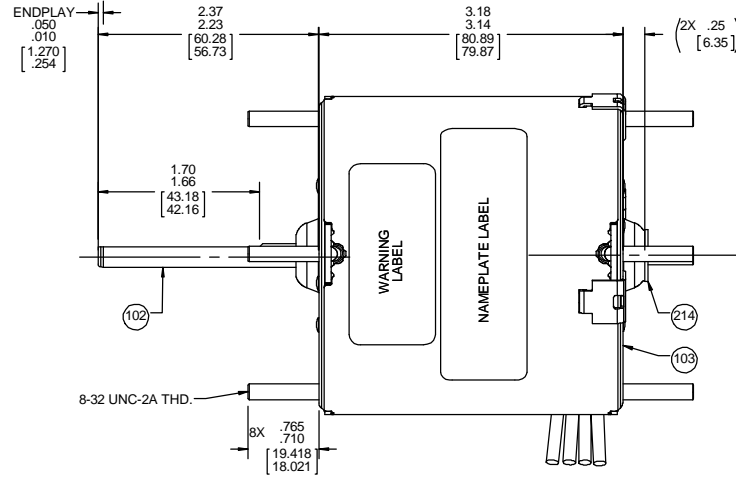
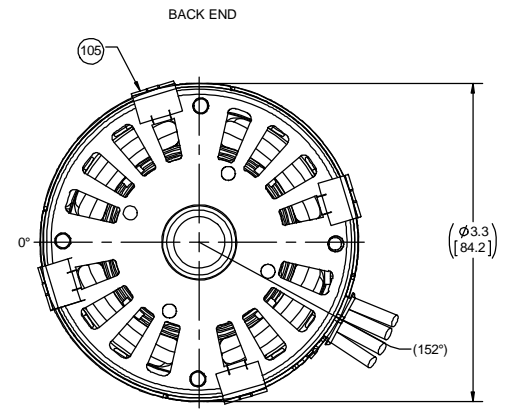


SHAFT DETAIL A



LEAD MATERIAL
18 GA 105° C, 2/64 INSUL.
X-LINKED POLY. (1) WHITE,
(1) BLACK, (1) BLUE,
AND (1) RED.
14.00/12.00 [355 60/304.80] LONG,
.68/.56 [17.27/14.22] STRIP.



61305568

SAFETY WARNING
This motor must be grounded in accordance with local or national electrical codes to prevent possible injury due to electrical shock.

AVERTISSEMENT DE SÉCURITÉ
Ce moteur doit être fondé sur conformément à la réglementation locale ou nationale électrique codes pour prévenir d'éventuelles blessures en raison de choc électrique.

00464072

00469053

- NOTES:
1. MOTOR IS MECHANICALLY REVERSIBLE.
2. PACK 270 MOTORS MAXIMUM PER PALLET.
3. NO PACKING TAPE OVER CARTON LABEL.

FASCO Fasco Industries, Inc. Motor Division

Assembled in Mexico

No. 71639514 TYPE U63B1 T.P. AO LR6319
115 V 60 Hz Class B (3spd)
Mech. Rev. 1500 RPM 2.0/1.0/0.7 A
Model D520 Max Amb:40°C

Connection Diagram
Wht — Common
Blk — High
Blu — Med
Red — Low

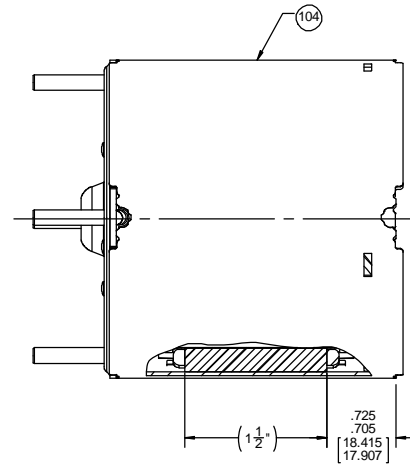
CUSTOMER:	FDC	APPLICATION:										
CUSTOMER PN:	D520	MOTOR WEIGHT:	4.13 LBS									
		ENVIRONMENT:	DRY									
MOTOR TYPE SHADED POLE												
	B	LA	FR									
	00	63	30									
		A	S									
		V	06									
		C	E									
		LB	5									
		B	1									
		A	0									
TYPICAL PERFORMANCE AT 115 VOLTS 60 HZ												
	IDLE			LOADED			LOCKED			BREAK		
MOTOR SPEED	RPM	AMP	WATT	IN OZ	RPM	AMP	WATT	IN OZ	AMP	WATT	IN OZ	
HIGH	1770	1.62	90	42.3	1550	1.95	146	17.4	2.78	202	45.8	
MED.	1756	.77	48	18.2	1550	.92	72	10.9	1.27	95	19.8	
LOW	1755	.48	30	12.3	1550	.58	45	5.9	.79	59	13.6	

DRAWING REVISION	AA	REVISION BY	FDP	DATE	8/31/2017	TOLERANCES UNLESS OTHERWISE SPECIFIED:	DRAWN BY	FDP
ECO	ECO-0130101	APPROVED BY	MLS	DATE	8/31/2017	DEC. INCH mm ANGLE		
ECO DESCRIPTION	CHANGED WARNING LABEL TO 61305568				.X ±0.1 [±2.5] ±1°	DATE	8/31/2017	DESCRIPTION
	COPYRIGHT REGAL BELTOI AMERICA, INC. ALL RIGHTS RESERVED.				.XX ±0.01 [±0.25]	APPROVED BY	MLS	OUTLINE MOTOR ASSY.
	PROPRIETARY AND CONFIDENTIAL INFORMATION. THIS DOCUMENT IS THE PROPERTY OF REGAL BELTOI AMERICA, INC. FORMERLY AND CONTAINING OWNERS PROPRIETARY INFORMATION. ANY PERSON, CORPORATION OR OTHER FIRM RECEIVING IT IS DEEMED BY RECEIVING IT, TO AGREE THAT IT, AND/OR ANY PART OF IT, SHALL NOT BE DISCLOSED TO ANY PERSON, CORPORATION OR OTHER ENTITY, DUPLICATED, AND/OR USED, EXCEPT AS EXPRESSLY APPROVED IN WRITING IN ADVANCE BY OWNER. THIS DOCUMENT SHALL BE RETURNED TO OWNER UPON REQUEST. IT MAY BE SUBJECT TO CERTAIN RESTRICTIONS UNDER APPLICABLE EXPORT CONTROL LAWS AND REGULATIONS.				.XXX ±0.005 [±0.127]	DATE	8/31/2017	MATERIAL
					.XXXX ±0.0005 [±0.0127]	REFERENCE		PROCESS/FINISH
					REMOVE BURRS & BREAK SHARP EDGES: .003/.015 [0.076/.381] X 45° CORNER FILLETS: R.02 [±.51]	THIRD ANGLE PROJECTION		BLACK
					MACHINED SURFACES: .125/3.2 INCH/ mm SHOWN IN [BRACKETS]	SIZE	C	DRAWING NUMBER
								71639514
								SHEET 1 OF 2

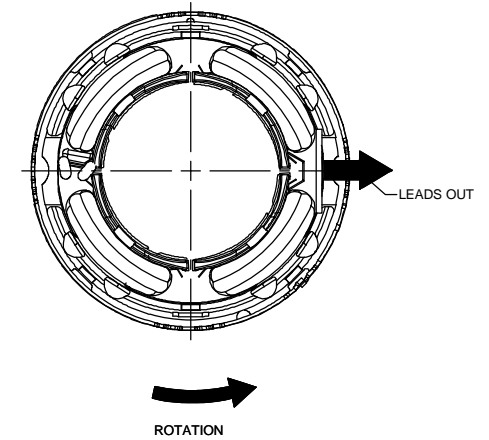
NOTES:

1. STAKE STATOR TO MAIN FRAME PER 88830264.
2. MAXIMUM TORQUE REQUIRED TO TURN MOTOR SHAFT IS 1/4 INCH-OUNCE.
3. MAKE-UP WASHERS ARE TO BE ADDED OR DELETED TO ACHIEVE REQUIRED ENDPLOY.

FRONT END



BACK END



PACKING SPECIFICATIONS

1. PACK PER 88838200. 1 PER CONTAINER. 45 CARTONS PER LAYER, 6 LAYERS PER CONTAINER. 270 MAX. PER PALLET.
2. PLACE FOAM RING ON OPPOSITE SHAFT END STUDS AND PLACE MOTOR IN CELL WITH SHAFT END UP. PLACE FILLER TUBE OVER SHAFT, CLOSE AND TAPE. PLACE LABEL ON SHAFT END.
3. PLACE (1) FLAT PAD ON PALLET, (1) BETWEEN EACH LAYER AND (1) ON TOP. TRIM FLAT PADS SO THEY DO NOT EXTEND PAST OUTER EDGE OF CARTONS. PLACE ALL INSPECTED STICKERS AND WRITING ON TOP FLAT PAD.
4. CARTON LABEL MUST ALL FACE ONE DIRECTION TOWARD THE OPEN END OF PALLET. SEE 88834408.

DRAWING REVISION AA		REVISION BY FDP	DATE 8/31/2017	TOLERANCES UNLESS OTHERWISE SPECIFIED: DEC. INCH mm ANGLE		DRAWN BY FDP		Regal Beloit America, Inc.	
ECO-0130101		APPROVED BY MLS	DATE 8/31/2017	.X ±0.1 [±2.5] ±1°	DATE 8/31/2017		DESCRIPTION OUTLINE MOTOR ASSY.		
ECO DESCRIPTION CHANGED WARNING LABEL TO 61305568				.XX ±0.01 [±0.25]	APPROVED BY MLS		MATERIAL		
<small> COPYRIGHT REGAL BELOIT AMERICA, INC. ALL RIGHTS RESERVED. PROPRIETARY AND CONFIDENTIAL INFORMATION. THIS DOCUMENT IS THE PROPERTY OF REGAL BELOIT AMERICA, INC. FORMERLY AND CONTAINS OWNERS PROPRIETARY INFORMATION. ANY PERSON, CORPORATION OR OTHER FIRM RECEIVING IT IS DEEMED BY RECEIVING IT, TO AGREE THAT IT, AND/OR ANY PART OF IT, SHALL NOT BE DISCLOSED TO ANY PERSON, CORPORATION OR OTHER ENTITY, DUPLICATED, AND/OR USED, EXCEPT AS EXPRESSLY APPROVED IN WRITING IN ADVANCE BY OWNER. THIS DOCUMENT SHALL BE RETURNED TO OWNER UPON REQUEST. IT MAY BE SUBJECT TO CERTAIN RESTRICTIONS UNDER APPLICABLE EXPORT CONTROL LAWS AND REGULATIONS. </small>				.XXX ±0.005 [±0.127]	DATE 8/31/2017		PROCESS/FINISH BLACK		
				.XXXX ±0.0005 [±0.0127]	REFERENCE		SIZE DRAWING NUMBER C 71639514		
				MACHINED SURFACES: .125/ 3/2 INCH/ mm SHOWN IN [BRACKETS]	THIRD ANGLE PROJECTION		SHEET 2 OF 2		