

NOTES

1. THRU AIR SPACING BETWEEN WIRE AND METAL .094 MIN.
2. TIE BOLT TORQUE TOLERANCE 7 - 10 IN. LBS.
3. ROTOR FREENESS TO BE WITHI 3/4 OZ. IN.
4. FOR WASHER SET-UP, SEE CHART C600 0279, DETAIL "Q".
5. MAXIMUM 0.1 Ω RESISTANCE BETWEEN GROUND TERMINAL AND MOTOR FRAME.
6. ASSEMBLE TIE WRAP, 8541 6000, AROUND ALL LEADS, WITH LEADS TAUT, AS CLOSE AS POSSIBLE TO COVER.
7. SALES TO SPECIFY ON P.O. WHICH PACK TO USE.

ECO	REV.	DATE	SPEC/CHECK
620126	14	12-8-97	BMC/RWS
631866	15	10-3-03	LDC/LDC
640598	16	10-06-09	GAE/GAE

- A. SEE PACKAGING MANUAL PAGE 2 FOR PACKAGING PROCEDURES.
- 1 MOTOR/CARTON;
 - 40 MOTORS/LAYER;
 - 6 LAYERS/PALLET;
 - 240 MOTORS/PALLET.
- B. SEE DRAWING 8785 6079 SH. 1 FOR PALLET LAYOUT.
- C. CENTER LABEL, 6119 6359, ON END OF CARTON.
- D. PACK SHAFT BUSHING, 0006 3274, IN CARTON WITH MOTOR.
- E. PLACE PAMPHLET, 6122 4579, IN CARTON WITH MOTOR.

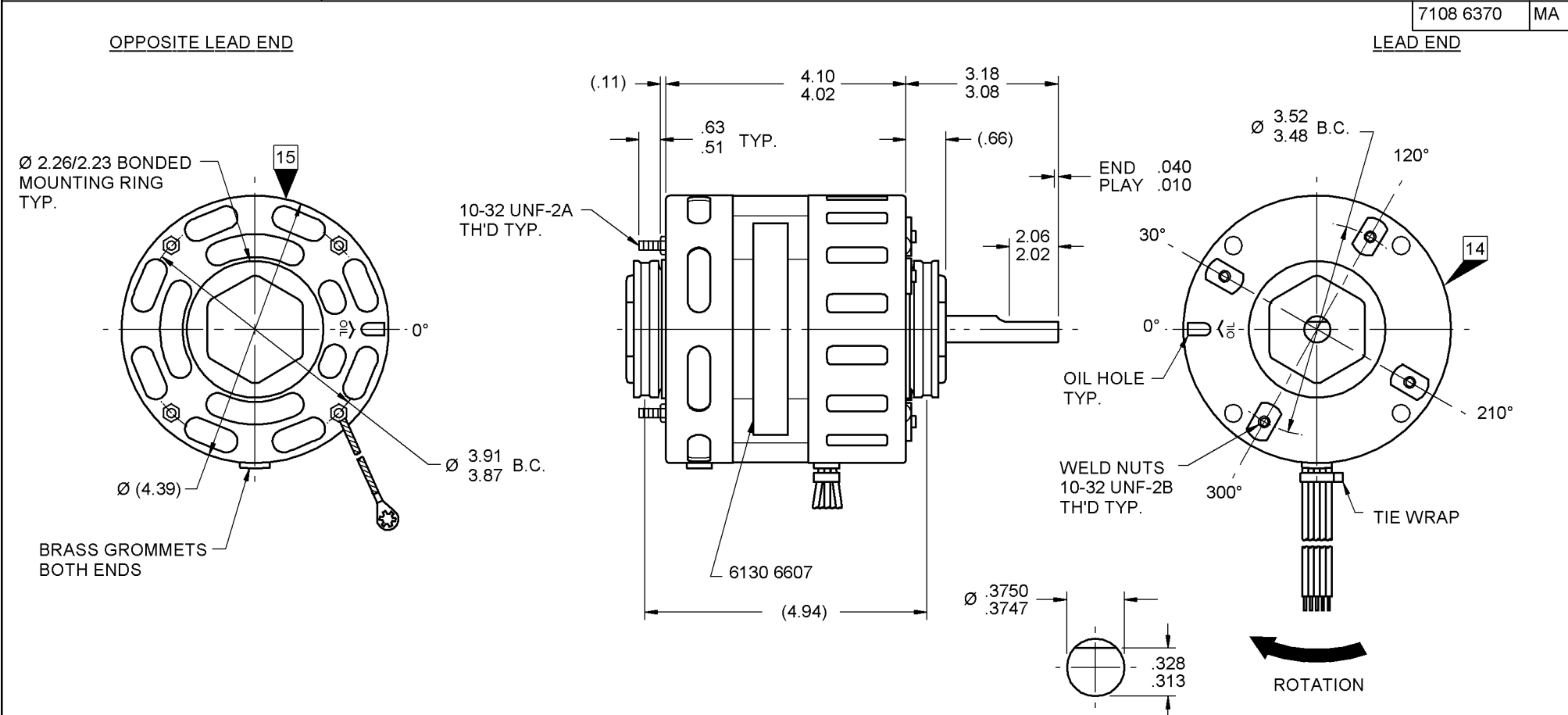
71xx xxxx,M

71xx xxxxC

PRODUCTION TEST AT IDLE 115/230 VOLTS 60 HZ		MOTOR SPEED	PERFORMANCE TEST 115/230 VOLTS 60 HZ 1 PH 1/20 HP											
AMP	WATT		IDLE			LOADED				LOCKED			BREAK	
			RPM	AMP	WATT	OZ/IN	RPM	AMP	WATT	OZ/IN	AMP	WATT	OZ/IN	
1.10 — .90	114.4 — 93.6	HIGH 230 V.	1760	1.0	104	50	1550	1.1	162	22	1.6	223	58	
2.09 — 1.71	114.4 — 93.6	HIGH 115 V.	1760	1.9	104	50	1550	2.2	162	22	3.2	223	58	

HI-POT TEST 2000 VOLTS
MAX LEAKAGE CURRENT 5 mA

MOTORS MUST START WITH 180 VOLTS APPLIED TO LOWEST SPEED.



LEAD DATA: 18 GA. 2/64" INS. 105° C THERMO. WHITE, BLACK, BLUE, RED AND PURPLE LEADS 33.00"/31.00" LONG WITH .56"/.44" STRIPS.

GROUND LEAD DATA: 18 GA. 2/64" INS. 105° C THERMO. GRN/YEL 7.00"/6.00" LONG WITH A # 10 SERRATED RING TERMINAL.

SPECIAL INSTRUCTIONS: MECHANICALLY REVERSIBLE. SHAFT IS BONDERIZED. SHAFT BUSHING PACKED WITH MOTOR. PAMPHLET PACKED WITH MOTOR.

MOTORS PACKED MAX. PER SKID: ___ PALLET PACK, 240 CARTON PACK.

7108 6370 = MADE IN U.S.A.
7108 6370M = ASSEMBLED IN MEXICO

FASCO FASCO INDUSTRIES, INC. MOTOR DIVISION

V. 115/208-230 HZ 50/60 PH 1 ROT HP 1/20 AMP 2.2/1.1 RPM 1550 TYPE U8 NO. 7108-6370 A0 THERMALLY PROTECTED

DATE/BAR CODE AREA PER 8882 6003

MODEL D484

6130 6607,M REV. 7

LOCATE ϕ OF NAMEPLATE ON ϕ OF STATOR TO READ RIGHT FROM LEAD END OF MOTOR CENTER AT 0°.

SIZE 4.00 X .75

CONNECTION DIAGRAM 115 V. 230 V.

WHT — LINE WHT — LINE
PURP — PURP - NOT USED
BLUE — BLUE
RED — RED
BLK — LINE BLK — LINE

SAFETY WARNING
THIS MOTOR MUST BE GROUNDED IN ACCORDANCE WITH LOCAL OR NATIONAL ELECTRICAL CODES TO PREVENT POSSIBLE INJURY DUE TO ELECTRICAL SHOCK

CUSTOMER: FASCO DISTRIBUTING CO.	PROPRIETARY: DO NOT DUPLICATE OR DISCLOSE TO THIRD PARTIES WITHOUT WRITTEN PERMISSION OF FASCO IND. INC., ELDON MO.
PART NUMBER: D484	FASCO INDUSTRIES, INC. MOTOR DIVISION ELDON PLANT
APPLICATION: DIST. SALES	MOTOR TYPE
FINISH COLOR: GRAY	SHADED POLE
MOTOR WEIGHT: LBS.	B LA FR A S C E B A
ENVIRONMENT: DRY	00 08 11 F 03 GF 5 5 0
INSULATION CLASS: A	MOTOR NUMBER 7108 6370 M
	REV. 16