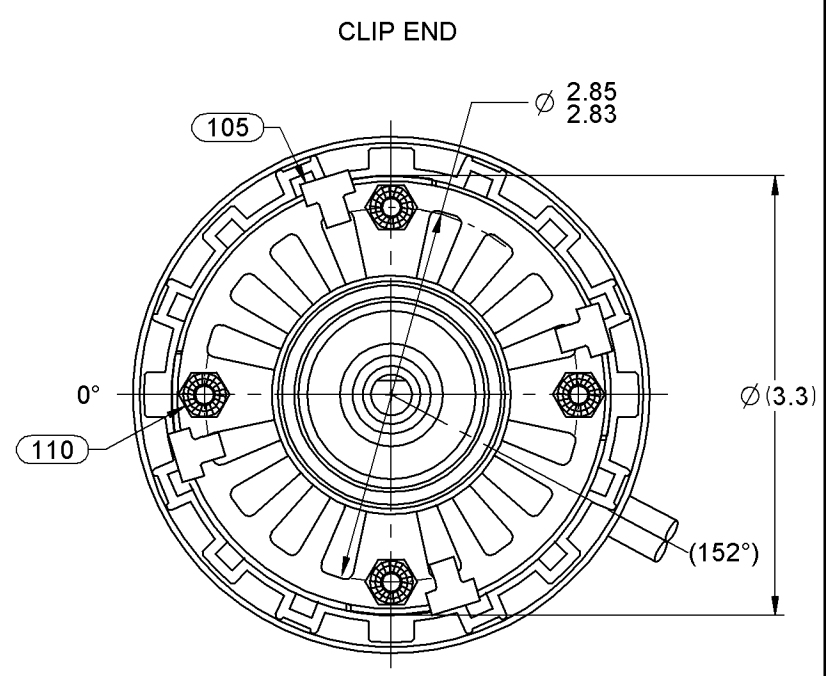
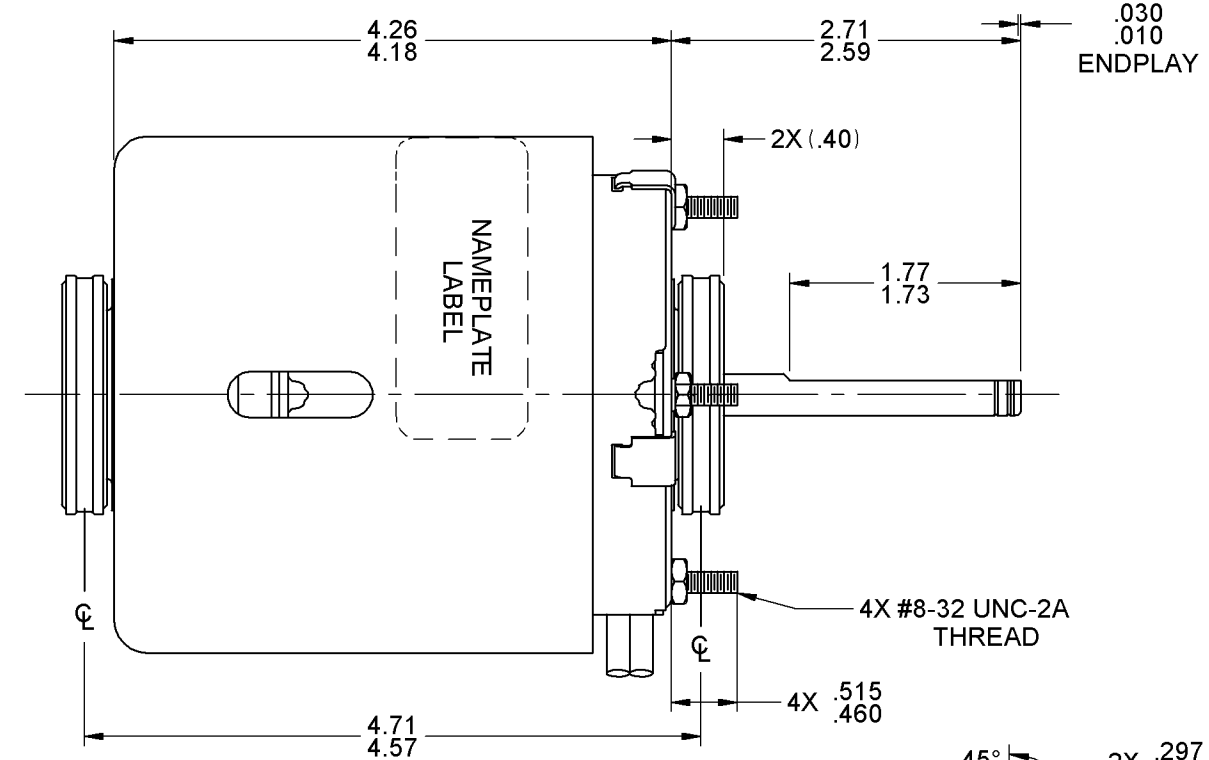
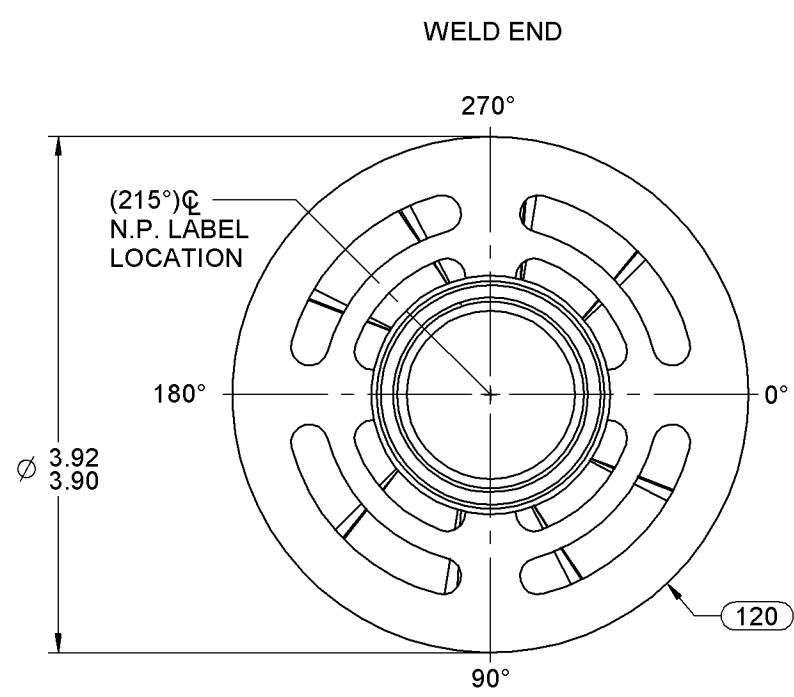
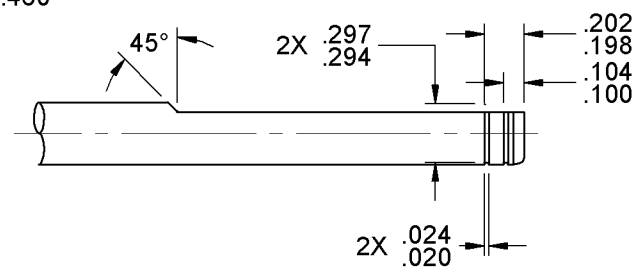
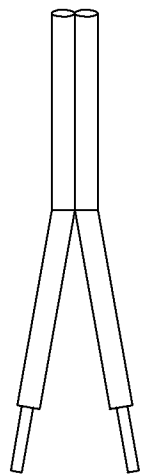


14	MOVED MOUNTING RING TO COOLING CASE	ATM 9-19-06	15	REVISED NAMEPLATE LABEL	SD 5-27-08	13	REMOVE BAR CODE FROM NAMEPLATE.	SDM 08/12/10	STANDARD TOLERANCES: ANGULAR +/- 1 DEGREE 2 PLACE DECIMAL +/- .01 3 PLACE DECIMAL +/- .005
----	-------------------------------------	-------------	----	-------------------------	------------	----	---------------------------------	--------------	---



AIRFLOW

LEAD MATERIAL
18 GA. 4/64 INS. 105°C.
(2) COND. PARALLEL
THERMOPLASTIC
BLACK, 35.00 / 33.00"
W/RIP 3.25 / 2.75" AND
W/STRIP .86 / .74"



SHAFT DETAIL

ROTATION

0046-4072

0046-4282

FASCO Motor Division
Assembled in Mexico
No. 71638153 TYPE U63B1 T.P. AO LR6319
115 V 60 Hz Class B
2.0 A 1550 RPM 1/20 HP
Model D473 Max. Amb: 40°C

SAFETY WARNING
This Motor Must Be Grounded in Accordance With Local Or National Electrical Codes To Prevent Possible Injury Due To Electrical Shock

61299553

- NOTES:
1. PACK 210 MOTORS MAX. PER PALLET.
2. NO PACKING TAPE OVER CARTON LABEL.

FRONT SHAFT POSITION	* TYPICAL PERFORMANCE AT 115 VOLTS 60 Hz.												CUSTOMER: FASCO DIST.	FASCO MOTORS GROUP AC MOTOR/BLOWER DIVISION CONFIDENTIAL: DO NOT DUPLICATE OR DISCLOSE TO THIRD PARTIES WITHOUT WRITTEN PERMISSION OF FASCO MOTORS GROUP, AC MOTOR/BLOWER DIVISION.									
HORIZONTAL 	MOTOR SPEED	IDLE			LOADED			LOCKED			BREAK	PART NUMBER: D473	APPLICATION:										
		R.P.M.	AMP.	WATT	IN.OZ.	R.P.M.	AMP.	WATT	IN.OZ.	AMP.	WATT	IN.OZ.	MOTOR WEIGHT: 4.44 POUNDS	MOTOR TYPE	DRAWING NUMBER								
CUSTOMER APPROVAL:		1754	1.59	85	42.7	1550	1.93	143	11.9	2.78	197	42.0	ENVIRONMENT: DRY	SHADED POLE	7163 8153								
SIGNED:													FINISH COLOR: BLACK	REV. 16									
DATE:													DRAWN BY: RM	B	LA	FR	A	S	C	E	B	A	
													DATE DRAWN: 8-1-01	00	63	28	V	05	JY	5	3	0	

If Printed, this is an Uncontrolled Document.