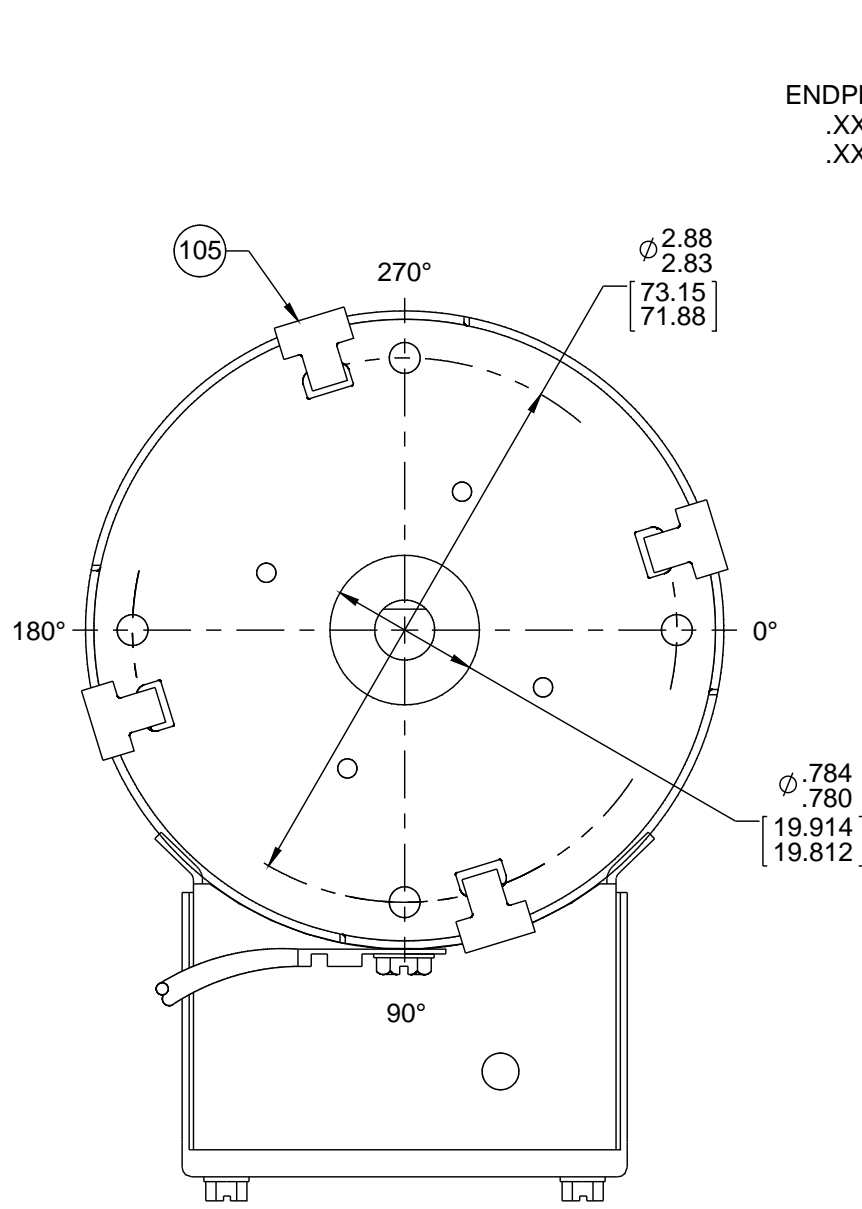
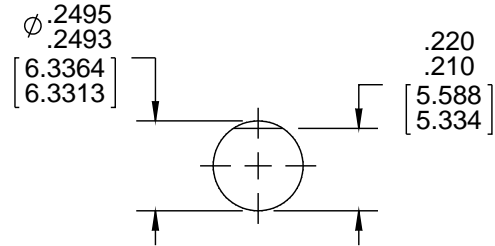


ORACLE PART REV. 015

FRONT END

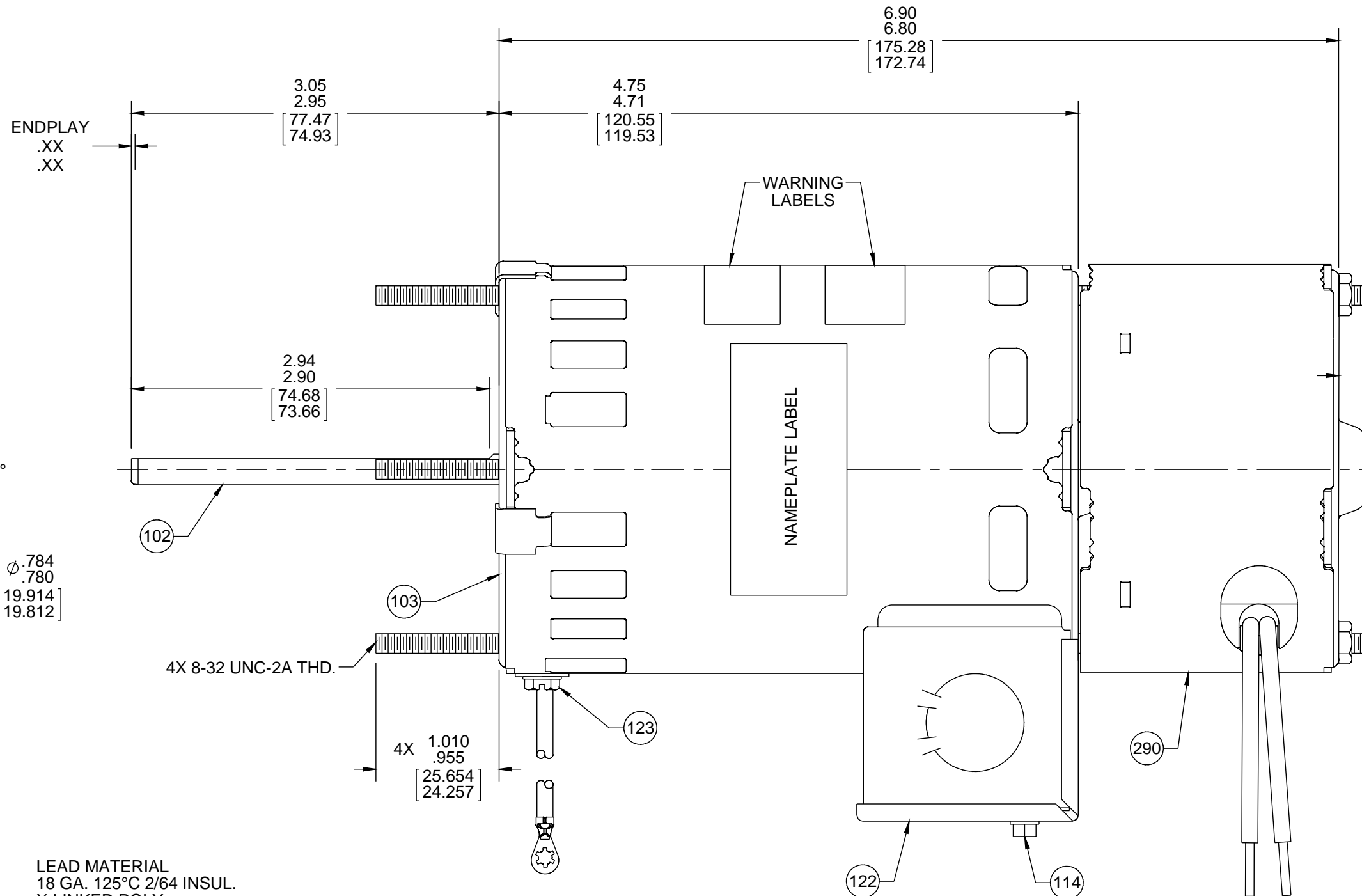


ROTATION



SHAFT DETAIL

NOTES:  
1. NO PACKAGING TAPE OVER CARTON LABEL.



LEAD MATERIAL  
18 GA. 125°C 2/64 INSUL.  
X-LINKED POLY.  
(1) ORANGE, (1) YELLOW,  
(1) BLUE, (1) RED, (1) BLACK  
7.00/5.00 [177.80/127.00]  
.56/.44 [14.22/11.18] STRIP

GROUND LEAD  
18 GA. 105°C 2/64 INSUL.  
THERMO., GRN/YEL  
13.00/11.00 [330.20/279.40]  
TERM. 89020156  
AMP 61794-1

SWITCH LEADS  
18 GA. 105°C 4/64 INSUL.  
THERMO., (2) BROWN  
17.50/15.50 [444.50/393.70]  
.56/.44 [14.22/11.18] STRIP

61294176

**WARNING**

WHEN OPERATED ON 460 V. SPECIAL CARE SHOULD BE TAKEN WITH HANDLING. CONNECTIONS AND GROUNDING TO AVOID SHOCK HAZARD.

WARNING LABEL TO READ RIGHT FROM BACK END

61305568

**SAFETY WARNING**  
This motor must be grounded in accordance with local or national electrical codes to prevent possible injury due to electrical shock

**AVERTISSEMENT DE SECURITE**  
Ce moteur doit être fondée sur conformément à la réglementation locale ou national électrique codes pour prévenir d'éventuelles blessures en raison de choc électrique

WARNING LABEL TO READ RIGHT FROM BACK END

00464072

**FASCO** Fasco Industries, Inc Motor Division

Assembled in Mexico  
No. 71219007 TYPE U21B T.P.  
230/460 V 60 Hz Class B  
1.2/.6 A 3000 RPM  
Model D459 SW280-10  
Sealed Ball Brg

1/15 HP  
Max Amb:40°C  
SW125VA-120V

Connection Diagram  
230 V 460 V

Orn — Line  
Yel — Line  
Blu — Line  
Red — Ins  
Blk — Ins  
Grn/Yel — Grd  
Brn — Switch  
Brn — Switch

00464179

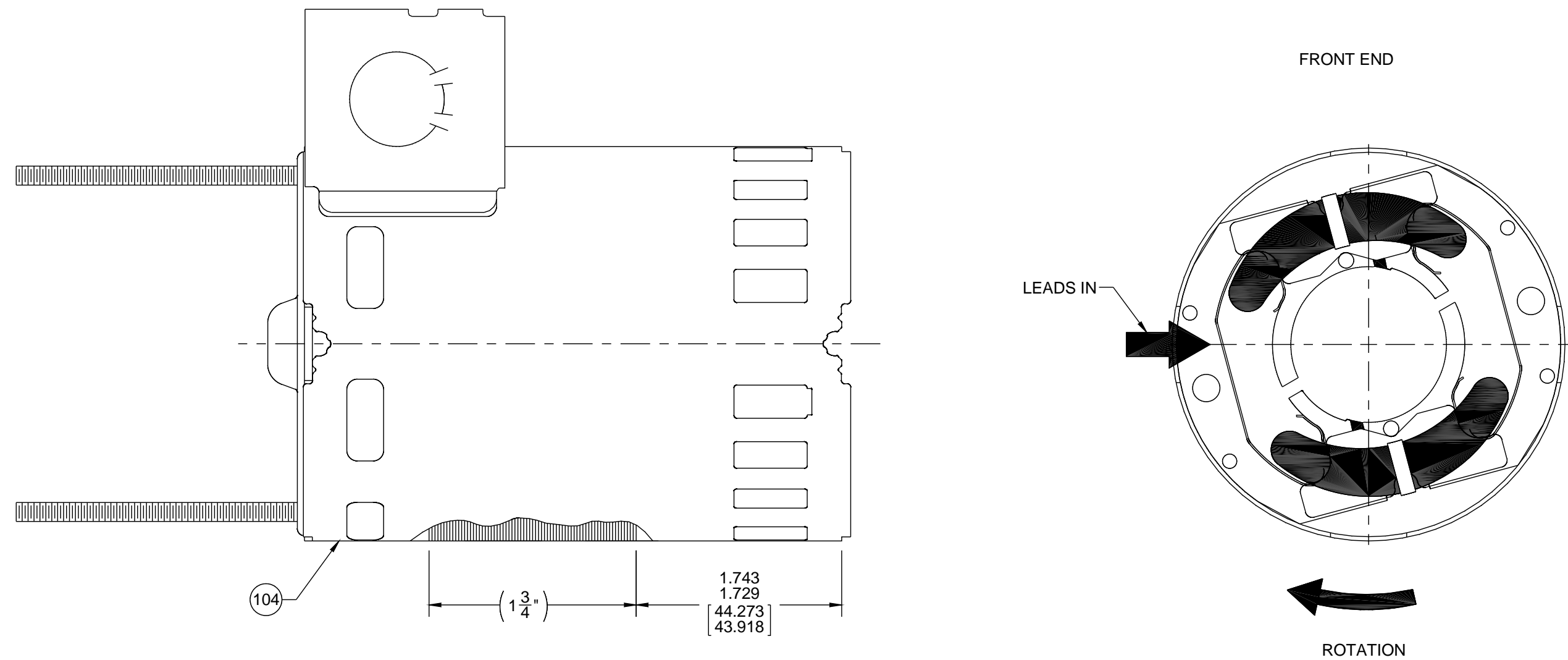
61299553

CUSTOMER:	FASCO DIST.	APPLICATION:	GAS FURNACE								
CUSTOMER PN:	D459	MOTOR WEIGHT:	4 5/8 LBS.								
		ENVIRONMENT:	DRY								
HORIZONTAL UP DOWN	MOTOR TYPE				REFERENCE SAMPLE						
	SHADED POLE										
	B	LA	FR	A	S	C	E	B	A		
	00	21	34	F	07	DG	9	0	0		
TYPICAL PERFORMANCE AT 230/460 VOLTS 60 HZ											
MOTOR SPEED	RPM	IDLE		LOADED				LOCKED		BREAK	
		AMP	WATT	IN OZ	RPM	AMP	WATT	IN OZ	AMP	WATT	IN OZ
460 V	3526	.48	98	23.57	3000	.59	168	6.70	.74	189	23.75

DRAWING REVISION T	REVISION BY PLA	DATE 3/8/2016	TOLERANCES UNLESS OTHERWISE SPECIFIED: DEC. INCH mm ANGLE .X ±0.1 [±2.5] .XX ±0.01 [±0.25] .XXX ±0.005 [±0.127] .XXXX ±0.0005 [±0.0127]	DRAWN BY PLA	DATE 3/8/2016	APPROVED BY MLS	DATE 3/8/2016	DESCRIPTION MOTOR ASSY
ECO-0096613	APPROVED BY MLS	DATE 3/8/2016	CORRECTED N/P AMPS & REDRAWN ON SW.	APPROVED BY MLS	DATE 3/8/2016	DATE 3/8/2016	DESCRIPTION MOTOR ASSY	
<small>COPYRIGHT REGAL BELOIT AMERICA, INC. ALL RIGHTS RESERVED. PROPRIETARY AND CONFIDENTIAL INFORMATION - THIS DOCUMENT IS THE PROPERTY OF REGAL BELOIT AMERICA, INC. ('OWNER') AND CONTAINS OWNER'S PROPRIETARY INFORMATION. ANY PERSON, CORPORATION OR OTHER FIRM RECEIVING IT IS DEEMED, BY RECEIVING IT, TO AGREE THAT IT, AND/OR ANY PART OF IT, SHALL NOT BE DISCLOSED TO ANY PERSON, CORPORATION OR OTHER ENTITY, DUPLICATED, AND/OR USED, EXCEPT AS EXPRESSLY APPROVED IN WRITING IN ADVANCE BY OWNER. THIS DOCUMENT SHALL BE RETURNED TO OWNER UPON REQUEST. IT MAY BE SUBJECT TO CERTAIN RESTRICTIONS UNDER APPLICABLE EXPORT CONTROL LAWS AND REGULATIONS.</small>				THIRD ANGLE PROJECTION	SIZE C	DRAWING NUMBER 71219007	PROCESS/FINISH BLACK	
				SHEET 1 OF 2				

ORACLE PART REV. 015

- NOTES:
1. ALL SPACINGS THRU AIR BETWEEN WIRE AND METAL MUST BE AT LEAST: .094 [2.388].
  2. NO KNOCKOUTS REMOVED.
  3. ASSEMBLE SPRING BETWEEN WASHER AND BEARING ON CLIP END WITH SPRING FINGERSTOWARD BEARING.
  4. ASSEMBLE BALL BEARINGS TO BEARING RETAINER PER 88834419.
  5. HI POT MOTOR ASSEMBLY AT 2350 VOLTS FOR 1 SECOND.
  6. COIL LEADS INSIDE CONDUIT BOX AFTER TESTING AND SECURE COVER WITH PC 114 SCREW.



SWITCH SPECIFICATIONS

1. PRESS ACTUATOR ASSEMBLY AND THIMBLE SO THAT TOP OF METAL ACTUATOR PLATE IS .568/.548 [14.427/13.919] FROM END OF SHAFT.
2. SWITCH MUST BE ADJUSTED TO OBTAIN .035/.025 [.889/.635] AIR GAP BETWEEN THIMBLE AND SWITCH IN FULL OPERATING POSITION.
3. ASSEMBLE SWITCH ASSEMBLY AND ACTUATOR PER PROCESS STANDARD.
4. WHEN ASSEMBLING HEYCO, NO SLACK ALLOWED INSIDE SWITCH COVER.
5. SWITCH MUST MAKE CONTACT BETWEEN 1800-2500 RPM AS SPEED INCREASES AND BREAK 50-500 RPM BELOW ACTUAL MAKE.
6. SWITCH MECHANISM TO GIVE QUIET OPERATION ABOVE 2500 RPM.

PACKING SPECIFICATIONS

1. PACK 1 PER CONTAINER, 140 MAX. PER PALLET, PACKING ASSY.: 87854917, 20 CARTONS MAX. PER LAYER, 7 LAYERS PER PALLET, PER 88834200 AND 88834408.
2. CARTON LABELS MUST ALL FACE ONE DIRECTION TOWARD THE OPEN END OF THE PALLET. SEE 88834408.

DRAWING REVISION T	REVISION BY PLA	DATE 3/8/2016	TOLERANCES UNLESS OTHERWISE SPECIFIED: DEC. INCH mm ANGLE	DRAWN BY PLA	Regal Beloit America, Inc.
ECO-0096613	APPROVED BY MLS	DATE 3/8/2016	.X ±0.1 [±2.5] ±1° .XX ±0.01 [±0.25] .XXX ±0.005 [±0.127] .XXXX ±0.0005 [±0.0127]	DATE 3/8/2016	
ECO DESCRIPTION CORRECTED N/P AMPS & REDRAWN ON SW.			REMOVE BURRS & BREAK SHARP EDGES: .003/.015 [.076/.381] X 45° CORNER FILLETS: R.02 [.51] MACHINED SURFACES: 125/3.2 INCH/mm	APPROVED BY MLS	DESCRIPTION MOTOR ASSY
<small>COPYRIGHT REGAL BELOIT AMERICA, INC. ALL RIGHTS RESERVED. PROPRIETARY AND CONFIDENTIAL INFORMATION - THIS DOCUMENT IS THE PROPERTY OF REGAL BELOIT AMERICA, INC. ('OWNER') AND CONTAINS OWNER'S PROPRIETARY INFORMATION. ANY PERSON, CORPORATION OR OTHER FIRM RECEIVING IT IS DEEMED, BY RECEIVING IT, TO AGREE THAT IT, AND/OR ANY PART OF IT, SHALL NOT BE DISCLOSED TO ANY PERSON, CORPORATION OR OTHER ENTITY, DUPLICATED, AND/OR USED, EXCEPT AS EXPRESSLY APPROVED IN WRITING IN ADVANCE BY OWNER. THIS DOCUMENT SHALL BE RETURNED TO OWNER UPON REQUEST. IT MAY BE SUBJECT TO CERTAIN RESTRICTIONS UNDER APPLICABLE EXPORT CONTROL LAWS AND REGULATIONS.</small>			THIRD ANGLE PROJECTION	REFERENCE	MATERIAL
				SIZE C	PROCESS/FINISH BLACK
				DRAWING NUMBER 71219007	SHEET 2 OF 2