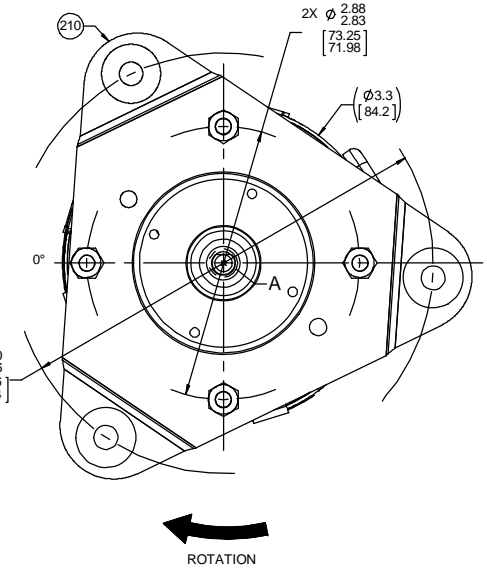
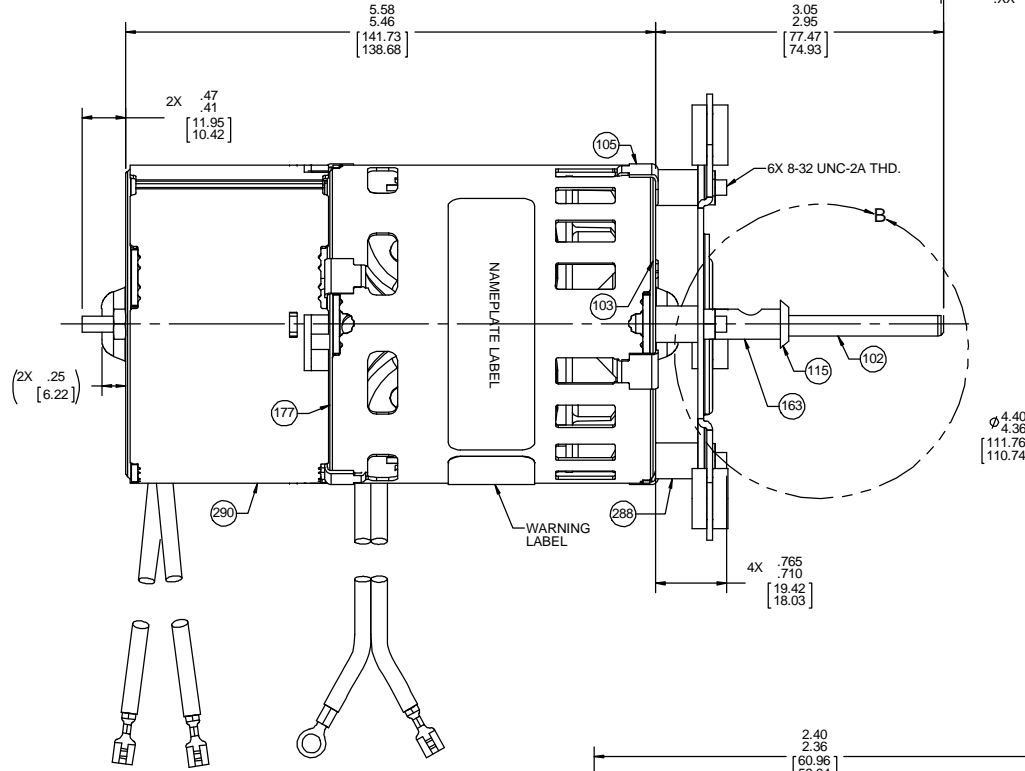
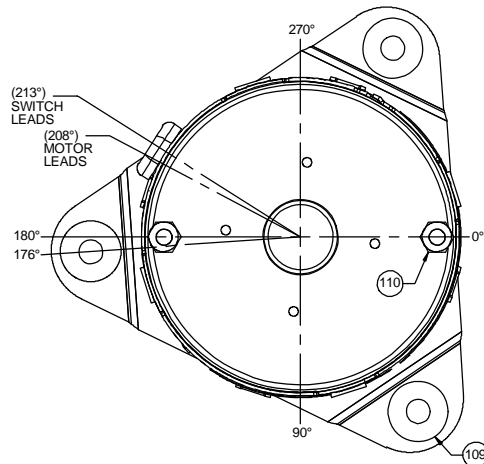


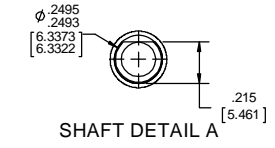
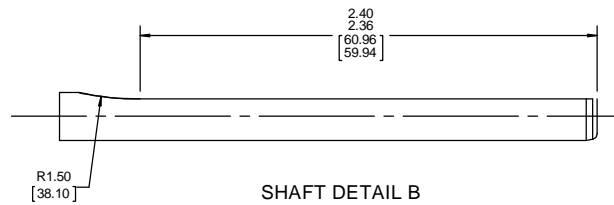
BACK END

FRONT END



**LEAD MATERIAL**  
 14 GA. 105°C 5/64 INSUL.  
 (2) COND. PARALLEL THERMO.  
 BLACK 32.00 / 30.00 [812.80 / 762.00]  
 W/ RIP 4.25 / 3.75 [107.95 / 95.25]  
 (1) W/ SPADE TERM. AMP 41728  
 (1) WIRING TERM. AMP 42110-3

**SWITCH LEADS**  
 18 GA. 105°C 3/64 INSUL.  
 THERMO. (2) RED  
 49.00 / 47.00 [1244.60 / 1193.80]  
 W/ SPADE TERM. AMP 42660-2



- NOTES:**
- MOTOR HAS 416 SS SHAFT.
  - PACK 144 MAX. MOTORS PER PALLET.
  - NO PACKING TAPE OVER CARTON LABEL.

61305568

00464072

00469108

**SAFETY WARNING**  
 This motor must be grounded in accordance with local or national electrical codes to prevent possible injury due to electrical shock.

**AVERTISSEMENT DE SÉCURITÉ**  
 Ce moteur doit être fondée sur conformément à la réglementation locale ou national électrique codes pour prévenir d'éventuelles blessures en raison de choc électrique.

**FASCO** Fasco Industries Inc. Motor Division

Assembled In Mexico  
 No. 71634295 TYPE U63B1 TP AO  
 115 V 60 Hz Class B  
 1.2 A 1500 RPM 1/50 HP  
 Model D418 Max. Amb: 40°C  
 SW280-10 SW125VA-120V

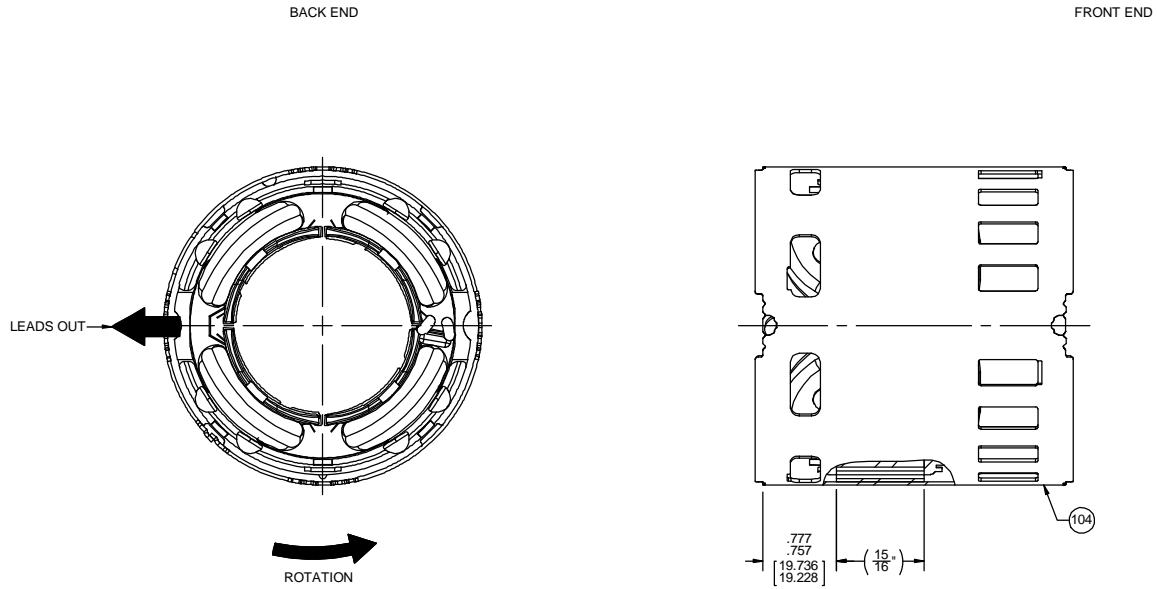
Connection Diagram  
 Blk — Line  
 Blk — Line  
 Red — Line  
 Red — Line

APPLY IN A CONVENIENT LOCATION TO READ RIGHT FROM BACK END

CUSTOMER:	FASCO DIST.	APPLICATION:										
CUSTOMER PN:	D418	MOTOR WEIGHT:	4.18 LBS.									
		ENVIRONMENT:	DRY									
HORIZONTAL	UP	MOTOR TYPE					REFERENCE SAMPLE					
		B	LA	FR	A	S	C	E	B	A		
	DOWN	00	63	34	F	03	OY	5	0	0		
TYPICAL PERFORMANCE AT 115 VOLTS 60 HZ												
MOTOR SPEED	IDLE			LOADED			LOCKED			BREAK		
	RPM	AMP	WATT	IN OZ	RPM	AMP	WATT	IN OZ	AMP	WATT	IN OZ	
	1760	.88	48	21.3	1500	1.05	76	5.6	1.43	102	18.0	

DRAWING REVISION	AA	REVISION BY	SED	DATE	10/11/2017	TOLERANCES UNLESS OTHERWISE SPECIFIED:	DEC.	INCH	mm	ANGLE	DRAWN BY	SED	REGAL™	Regal Beloit America, Inc.
ECO-0131511		APPROVED BY	MLS	DATE	10/11/2017	.X	±0.1	[.2.5]	°11		DATE	10/11/2017	DESCRIPTION	OUTLINE
REVISED SWITCH LEAD EXIT LOCATION						.XX	±0.01	[.0.25]			APPROVED BY	MLS	MATERIAL	MOTOR ASSY
COPYRIGHT REGAL BELOIT AMERICA, INC. ALL RIGHTS RESERVED.						.XXX	±0.005	[.0.127]			DATE	10/11/2017	REFERENCE	PROCESS/FINISH
PROPRIETARY AND CONFIDENTIAL INFORMATION. THIS DOCUMENT IS THE PROPERTY OF REGAL BELOIT AMERICA, INC. FORMERLY AND CONTAINS OWNERS PROPRIETARY INFORMATION. ANY PERSON, CORPORATION OR OTHER FIRM RECEIVING IT IS DEEMED TO HAVE AGREED TO AGREE THAT IT, AND/OR ANY PART OF IT, SHALL NOT BE DISCLOSED TO ANY PERSON, CORPORATION OR OTHER ENTITY, DUPLICATED, AND/OR USED, EXCEPT AS EXPRESSLY APPROVED IN WRITING IN ADVANCE BY OWNER. THIS DOCUMENT SHALL BE RETURNED TO OWNER UPON REQUEST. IT MAY BE SUBJECT TO CERTAIN RESTRICTIONS UNDER APPLICABLE EXPORT CONTROL LAWS AND REGULATIONS.						.XXXX	±0.0005	[.0.0127]			THIRD ANGLE PROJECTION	SIZE	DRAWING NUMBER	BLACK PAINT
REMOVE BURRS & BREAK SHARP EDGES: .0031 [0.0787/381] X 45° CORNER FILLETS: R.02 [51]						.125	±0.005	[.0.127]			C	71634295	SHEET	1 OF 2
MACHINED SURFACES: 125/3.2 INCH/mil						mm SHOWN IN [BRACKETS]								

- NOTES:
1. STAKE STATOR TO MAIN FRAME PER 88830264.
  2. MAXIMUM TORQUE REQUIRED TO TURN MOTOR SHAFT IS 1/4 INCH-OUNCE.
  3. ASSEMBLE SPRING BETWEEN WASHER AND BEARING ON BACK END, WITH SPRING FINGERS TOWARD BEARING.
  4. SWITCH LEADS MUST MEET PULL TEST PER 88834274.
  5. ASSEMBLE BALL BEARINGS TO BEARING RETAINERS PER 88834419.
  6. ASSEMBLE BUSHING TO SHAFT AND SECURE WITH OIL SLINGER.



**SWITCH INSTRUCTIONS**

1. ASSEMBLE SWITCH PER 88834261.
2. PRESS ACTUATOR ASSEMBLY AND THIMBLE ON SHAFT SO THAT TOP OF METAL ACTUATOR PLATE IS .568 / .548 [14.172 / 13.919] FROM END OF SHAFT.
3. SWITCH MUST BE ADJUSTED TO OBTAIN .035 / .025 [.889 / .635] AIR GAP BETWEEN THIMBLE AND SWITCH IN FULL OPERATING POSITION.
4. SWITCH MUST MAKE CONTACT BEFORE 1250 RPM AS SPEED INCREASES AND BREAK ABOVE 400 RPM AS SPEED DECREASES. SWITCH MECHANISM TO GIVE QUIET OPERATION ABOVE 1000 RPM.
5. WHEN ASSEMBLING HEYCO, NO SLACK ALLOWED INSIDE SWITCH COVER.
6. SWITCH LEADS MUST NOT CROSS OVER SWITCH.
7. MOTOR MUST BE FREE TO START AT 90 VOLTS OR LESS.

**PACKING SPECIFICATIONS**

1. PACK PER 88834200. 1 PER CONTAINER, 144 MAX. PER PALLET. 6 LAYERS PER PALLET, 24 CARTONS PER LAYER.
2. PLACE FILLER TUBE OVER SHAFT EXTENSION. PLACE FOAM RING ON BACK END, FOLD PACKING PAPER IN HALF AND WRAP AROUND MOTOR. PLACE IN CARTON, CLOSE FLAPS AND TAPE.
3. PLACE 1 FLAT PAD ON TOP LAYER OF PALLET. PLACE ALL INSPECTION STICKERS AND WRITING ON TOP FLAT PAD.
4. CARTON LABELS MUST ALL FACE ONE DIRECTION TOWARD THE OPEN END OF THE PALLET PER 88834408.

DRAWING REVISION AA	REVISION BY SED	DATE 10/11/2017	TOLERANCES UNLESS OTHERWISE SPECIFIED: DEC. INCH mm ANGLE	DRAWN BY SED	Regal Beloit America, Inc.	
ECO ECO-0131511	APPROVED BY MLS	DATE 10/11/2017	.X ±0.1 [±2.5] ±1° .XX ±0.01 [±0.25] .XXX ±0.005 [±0.127] .XXXX ±0.0005 [±0.0127]	DATE 10/11/2017		
ECO DESCRIPTION REVISED SWITCH LEAD EXIT LOCATION			REMOVE BURRS & BREAK SHARP EDGES: .003/.015 [0.076/.381] X 45° CORNER FILLETS: R.02 [.51]	APPROVED BY MLS	DESCRIPTION <b>OUTLINE MOTOR ASSY</b>	
<small>                 PROPRIETARY AND CONFIDENTIAL INFORMATION. THIS DOCUMENT IS THE PROPERTY OF REGAL BELOIT AMERICA, INC. OWNERS AND CONTAINS OWNERS PROPRIETARY INFORMATION. ANY PERSON, CORPORATION OR OTHER FIRM RECEIVING IT IS DEEMED BY RECEIVING IT, TO AGREE THAT IT, AND/OR ANY PART OF IT, SHALL NOT BE DISCLOSED TO ANY PERSON, CORPORATION OR OTHER ENTITY, DUPLICATED, AND/OR USED, EXCEPT AS EXPRESSLY APPROVED IN WRITING IN ADVANCE BY OWNER. THIS DOCUMENT SHALL BE RETURNED TO OWNER UPON REQUEST. IT MAY BE SUBJECT TO CERTAIN RESTRICTIONS UNDER APPLICABLE EXPORT CONTROL LAWS AND REGULATIONS.             </small>			MACHINED SURFACES: .125 / 3.2 INCH/ mm SHOWN IN [BRACKETS]	DATE 10/11/2017	MATERIAL	PROCESS/FINISH BLACK PAINT
			THIRD ANGLE PROJECTION	REFERENCE	SIZE C	DRAWING NUMBER <b>71634295</b>
						SHEET 2 OF 2