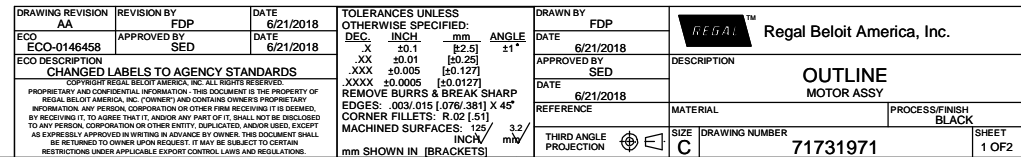
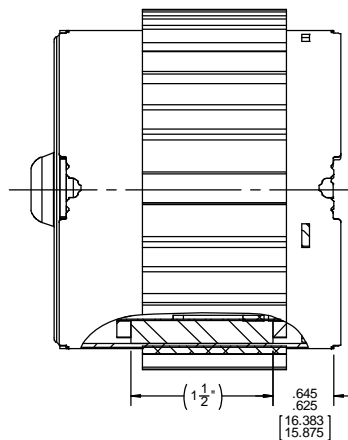

1

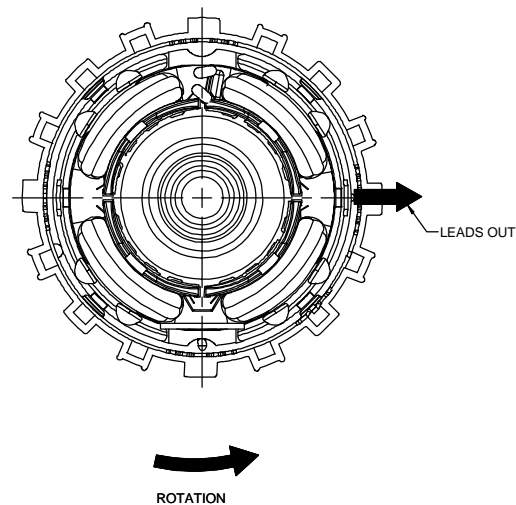
NOTES:

1. MAXIMUM TORQUE REQUIRED TO TURN MOTOR SHAFT IS 3/8 INCH-OUNCE.
2. ASSEMBLE SPRING BETWEEN WASHER AND BEARING ON FRONT END, WITH SPRING FINGERS TOWARD BEARING.
3. ASSEMBLE BALL BEARINGS TO BEARING RETAINERS PER 88834419.

BACK END



FONT END





BLAST COOL SPECIFICATIONS

1. ASSEMBLE COOLING CASE PER 88839269.
2. DIMENSION OVER END FRAMES TO BE 3.06/3.02 [77.72/76.71].
3. ATTACH PM FAN TO SHAFT WITH HUB TOWARD BACK END OF COOLING CASE.

PACKING SPECIFICATIONS

1. PACK 1 PER CONTAINER, 35 CONTAINERS PER LAYER, 6 LAYERS PER PALLET, 210 MAX. PER PALLET, PACKING ASSY.:87854677.
2. PLACE (4) NUTS IN PLASTIC BAG, PLACE IN CARTON WITH MOTOR.
3. CARTON LABELS MUST ALL FACE ONE DIRECTION TOWARD THE OPEN END OF THE PALLET. PER 88834408.

DRAWING REVISION		REVISION BY		DATE		TOLERANCES UNLESS OTHERWISE SPECIFIED:		DRAWN BY		 Regal Beloit America, Inc.	
AA		FDP		6/21/2018		DEC. INCH MM ANGLE		FDP			
ECO-0146458		APPROVED BY SED		DATE 6/21/2018		X ±0.1 0.25 1°		DATE 6/21/2018		 Regal Beloit America, Inc.	
ECO DESCRIPTION		SED		DATE 6/21/2018		XX ±0.01 0.25		APPROVED BY SED			
CHANGED LANCES TO AGENCY STANDARDS COPYRIGHT REGAL BELLOIT AMERICA, INC. ALL RIGHTS RESERVED. PROPRIETARY AND CONFIDENTIAL INFORMATION. THIS DOCUMENT IS THE PROPERTY OF REGAL BELLOIT AMERICA, INC. (OWNER) AND CONTAINS OWNER'S PROPRIETARY INFORMATION. NO REPRODUCTION, COPIATION OR OTHER REUSE OF THIS DOCUMENT BY RECEIVING IT, TO AGREE THAT, AND/OR ANY PART OF IT, SHALL NOT BE DISCLOSED OR REPRODUCED, COPIED OR OTHERWISE USED, IN ANY MANNER, WITHOUT THE EXPRESS WRITTEN APPROVAL OF REGAL BELLOIT AMERICA, INC. (OWNER). THIS DOCUMENT SHALL BE RETURNED TO OWNER UPON WRITING IN ADVANCE BY OWNER. THIS DOCUMENT SHALL BE USED ONLY FOR THE SPECIFIC PROJECT AND SHALL BE SUBJECT TO CERTAIN RESTRICTIONS UNDER APPLICABLE EXPORT CONTROL LAWS AND REGULATIONS.											
OUTLINE MOTOR ASSY											
PROCESS/FINISH BLACK											
71731971											