

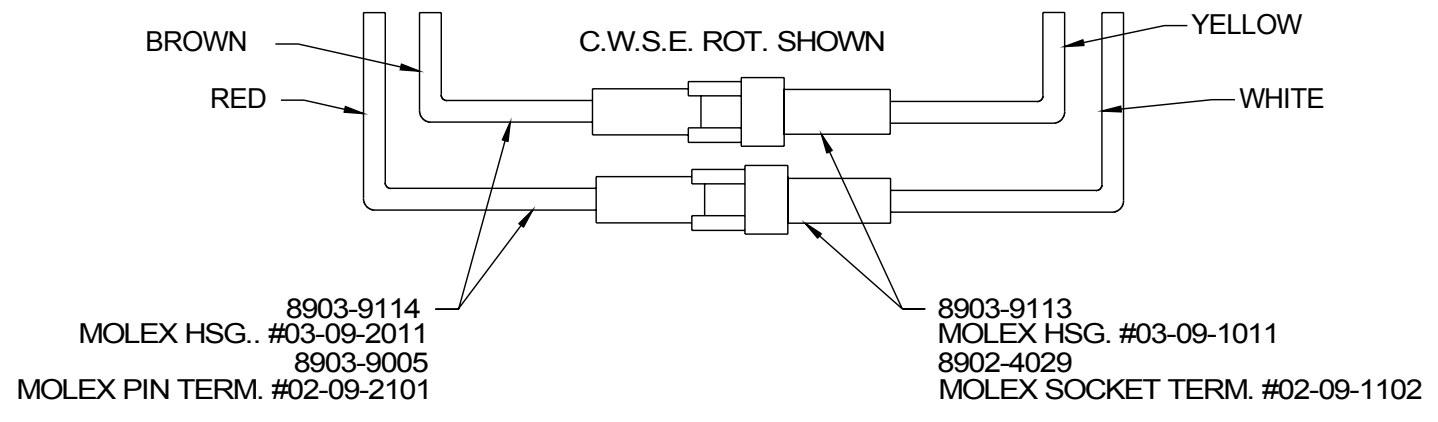
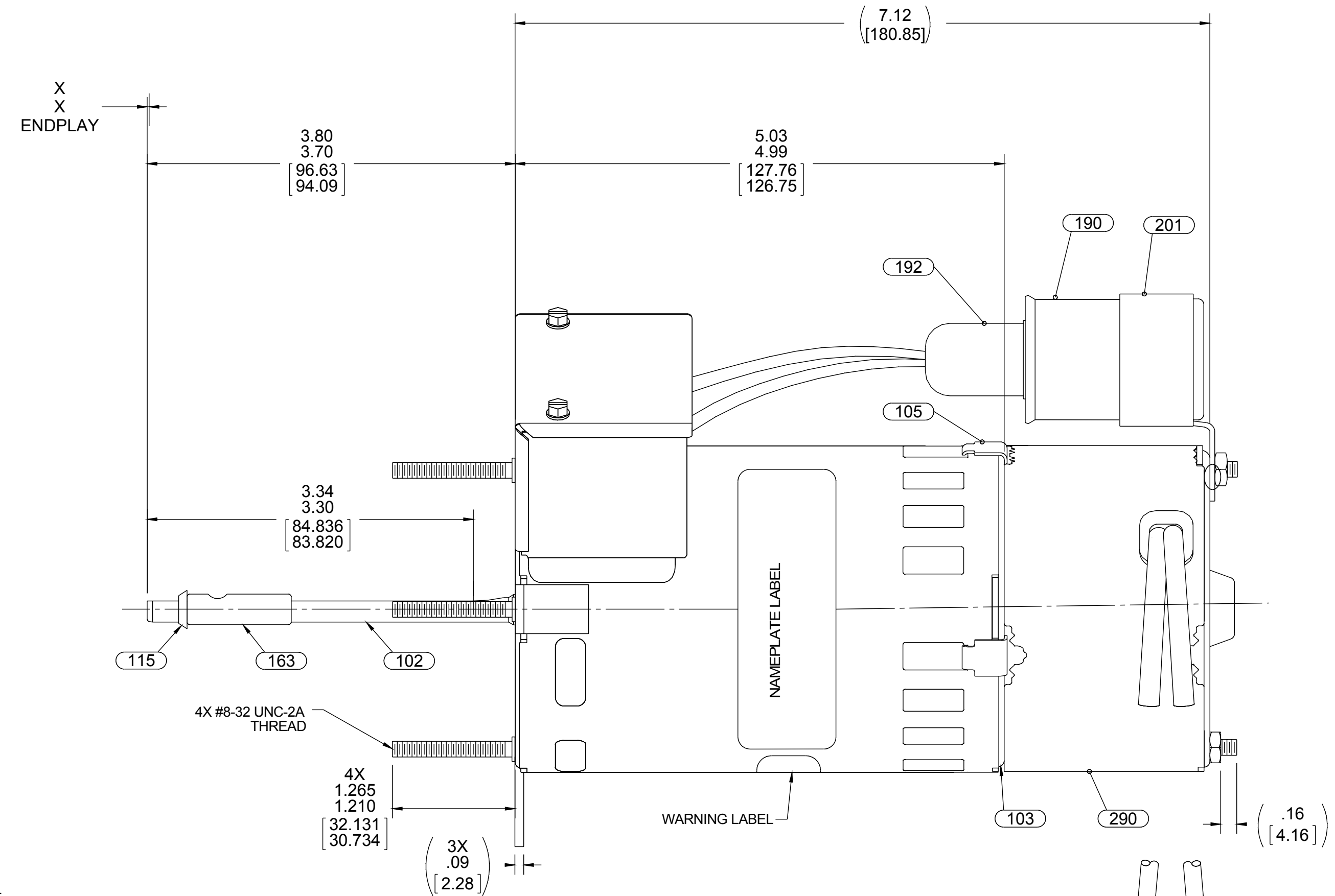
**LEAD MATERIAL**  
18 GA 125° C 2/64 INS.  
X-LINKED POLY, BLACK  
23.00/21.00 [584.20/533.40]. LONG  
W/ STRIP .56/.44[14.22/11.18]

**REVERSING LEAD MATERIAL**  
18 GA 125° C 2/64 INS.  
X-LINKED POLY, YELLOW,  
WHITE, RED, BROWN,  
4.00/3.00 [101.60/76.20]. LONG

**SWITCH LEADS**  
18 GA 125° C 4/64 INS.  
EPDM, WHITE  
23.00/21.00 [584.20/533.40]. LONG  
W/ STRIP .56/.44[14.22/11.18]

**CAPACITOR LEADS**  
18 GA 125° C 2/64 INS.  
X-LINKED POLY, BLUE,  
7.00/5.00 [177.80/127.00] LONG  
W/FLAG TERMS. 8903-4045  
AMP # 42742-2

- NOTES:**
1. COIL LINE & REVERSING LEADS INSIDE CONDUIT BOX COVER AFTER TESTING AND SCORE WITH SCREW.
  2. NO KNOCKOUTS REMOVED.
  3. MOTOR HAS #416 STAINLESS STEEL SHAFT.
  4. ASSEMBLE BUSHING TO SHAFT AND HOLD IN PLACE WITH OIL SLINGER.
  5. NO PACKAGING TAPE OVER CARTON LABEL.



TO REVERSE ROTATION INTERCHANGE RED AND BROWN  
MOTOR MUST HAVE C.W.S.E. CONNECTION WHEN SHIPPING.

**SAFETY WARNING**  
This motor must be grounded in accordance with local or national electrical codes to prevent possible injury due to electrical shock

**AVERTISSEMENT DE SECURITE**  
Ce moteur doit être fondée sur conformément à la réglementation locale ou national électrique codes pour prévenir d'éventuelles blessures en raison de choc électrique

6130 5568

APPLY IN A CONVENIENT LOCATION TO READ FROM CLIP END

00464072

**FASCO** Fasco Industries, Inc. Motor Division

Assembled in Mexico

No. 71621821 TYPE U62B1 T.P. AO

115 V 60 Hz Class B

1.5 A 3000 RPM 1/10 HP

Model D410 Sealed Ball Brg

SW280-1 (1 spd)

00469122

Connection Diagram

C.C.W.S.E. C.W.S.E.

Bk— Line Bk— Line

Bk— Line Bk— Line

Red— Red

Wh— Wh

Wh— Wh

Brn— Brn

Blu— Blu

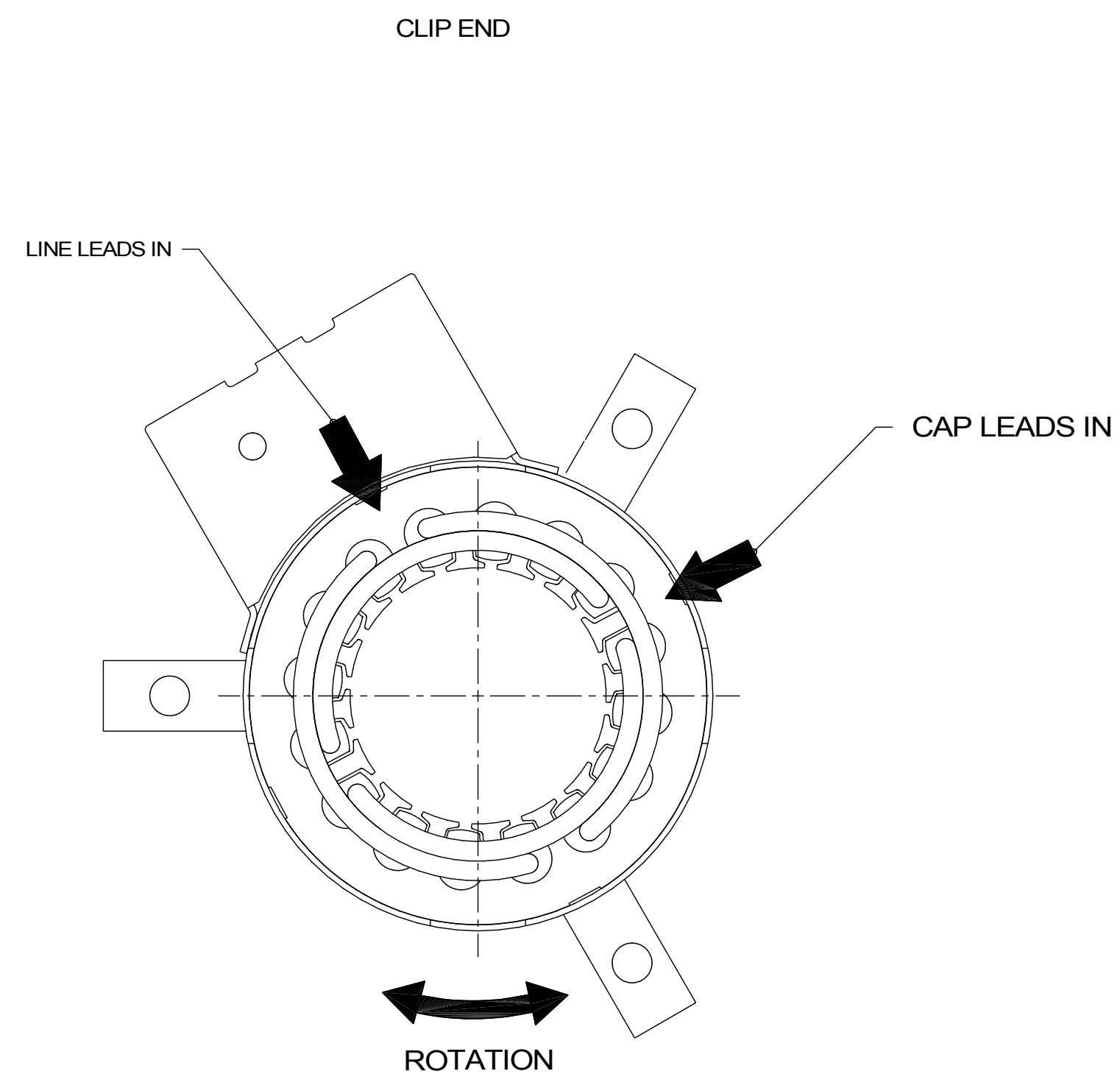
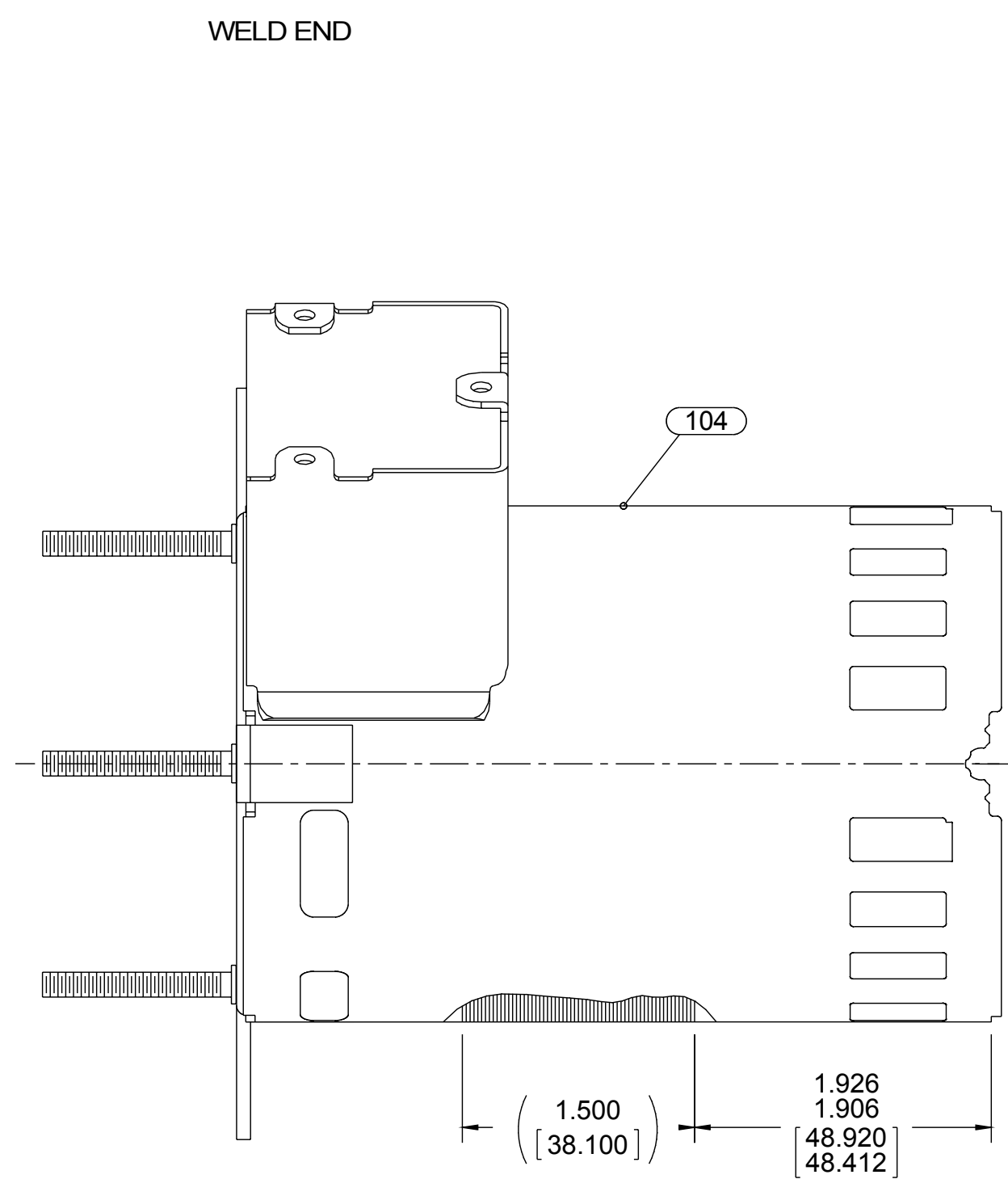
Blu— Blu

7.5 MFD/ 370 VAC

61299553

CUSTOMER PN: D410	ENVIRONMENT: DRY
CUSTOMER: FASCO DIST.	APPLICATION: COUNTER SALES
	MOTOR WEIGHT: 5.75 LBS.
CUSTOMER APPROVAL	FRONT SHAFT POSITION
SIGNED:	HORIZONTAL
DATE:	UP
	DOWN
MOTOR TYPE: P.S.C. REFERENCE SAMPLE NUMBER: 71620941	
TYPICAL PERFORMANCE AT 115 VOLTS 60 HZ	
MOTOR SPEED	3528
RPM	3528
AMP	.64
WATT	73
IN. OZ	38.7
RPM	3000
AMP	1.42
WATT	163
IN. OZ	26.3
AMP	2.30
WATT	246
IN. OZ	45.7

DRAWING REVISION: AH	REVISION BY: G.ZHAO	DATE: 07-16-2015	TOLERANCES UNLESS OTHERWISE SPECIFIED:	DRAWN BY: S.DALTON
ECO: ECO-0081097	APPROVED BY: G.ZHANG	DATE: 07-16-2015	DEC. INCH. mm ANGLE	DATE: 12-13-2001
SEE ECO			.XX +0.01 [-0.25]	APPROVED BY:
COPYRIGHT REGAL BELTO AMERICA, INC. ALL RIGHTS RESERVED. PROPRIETARY AND CONFIDENTIAL INFORMATION - THIS DOCUMENT IS THE PROPERTY OF REGAL BELTO AMERICA, INC. OWNERS AND CONTAINS OWNERS PROPRIETARY INFORMATION. ANY PERSON, CORPORATION OR OTHER FIRM RECEIVING IT IS DEEMED TO HAVE AGREED TO ACCEPT THAT IT, AND/OR ANY PART OF IT, SHALL NOT BE DISCLOSED TO ANY PERSON, CORPORATION OR OTHER ENTITY, DUPLICATED, AND/OR USED, EXCEPT AS EXPRESSLY APPROVED IN WRITING BY OWNER. THIS DOCUMENT SHALL BE RETURNED TO OWNER UPON REQUEST. IT MAY BE SUBJECT TO CERTAIN RESTRICTIONS UNDER APPLICABLE EXPORT CONTROL LAWS AND REGULATIONS.			XXX +0.005 [-0.127]	DATE:
REMOVE BURRS & BREAK SHARP EDGES: .003/015 [076/381] X 45°			XXXX +0.0005 [-0.0127]	REFERENCE:
CORNER FILLETS: R.02 [51]			MACHINED SURFACES: 125/32	THIRD ANGLE PROJECTION
mm SHOWN IN [BRACKETS]			INCH/mm	SIZE: D
DRAWING NUMBER: 71621821			DESCRIPTION: MODEL-SFHP-3.3 OUTLINE	
SHEET 1 OF 2			PROCESS/FINISH: BLACK PAINT	



SWITCH INSTRUCTIONS

1. ASSEMBLE SWITCH AND ACTUATOR PER PROCESS STANDARD.
2. PRESS ACTUATOR ASSEMBLY AND THIMBLE ON SHAFT SO THAT TOP OF METAL ACTUATOR PLATE .568/ .548 FROM END OF SHAFT.
3. SWITCH MUST BE ADJUSTED TO OBTAIN .035/ .025[8.89/6.35] AIR GAP BETWEEN THIMBLE AND SWITCH BUTTON IN FULL OPERATING POSITION.
4. SWITCH MUST MAKE CONTACT BEFORE 1800-2500 RPM AS SPEED INCREASES AND BREAK 50-500 RPM BELOW ACTUAL MAKE.
5. SWITCH MECHANISM TO GIVE QUIET OPERATION ABOVE 2500 RPM.
6. NO SLACK ALLOWED INSIDE SWITCH COVER WHEN ASSEMBLING HEYCO.

PACKING SPECIFICATIONS

1. PACK PER P. S. 8883 4200. 1 PER CARTON, 18 PER LAYER, 108 PER PALLET.
2. PLACE A FOAM RING ON BACK END OF MOTOR, PLACE MOTOR IN CARTON, SHAFT END UP AND CONDUIT BOX TOWARD PRINTED SIDE OF CARTON. PLACE A FOAM RING OVER EVERY BRACKET AND SLIDE INTO CARTON. PLACE TUBE FILLER OVER SHAFT, CLOSE FLAPS AND TAPE.
3. PLACE ONE FLAT PAD BETWEEN EACH LAYER. TRIM FLAT PADS SO THEY DO NOT EXTEND PAST OUTER EDGE OF CARTONS.
4. CARTON LABELS MUST ALL FACE ONE DIRECTION TOWARD THE OPEN END OF THE PALLET. SEE P.S. 8883 4408
5. NO PACKAGING TAPE ALLOWED ON CARTON LABEL.

NOTES:

1. STAKE STATOR TO SLEEVE PER P.S. 8883 0264.
2. MAXIMUM TORQUE REQUIRED TO TURN MOTOR SHAFT IS 3/8 INCH-OUNCE.
3. ASSEMBLE SPRING BETWEEN WASHER AND BEARING ON CLIP END, WITH SPRING FINGERS TOWARD BEARING.
4. ASSEMBLE BALL BEARINGS TO BEARING RETAINERS PER WORK CENTER PROCESS.
5. RECUT BLUE LEADS TO 7.00 / 5.00[177.80/127.00], RESTRIP TO .22 ±.06[5.59 ± 1.52] AND ATTACH FLAG TERMINALS.
6. RECUT RED AND BROWN LEADS TO 4.00 / 3.00[101.60/76.20]", RESTRIP TO .25 ±.06[6.35±1.52] AND ATTACH PIN TERMINALS AND TERMINAL HSG.
7. RECUT WHITE AND YELLOW LEADS TO 4.00 / 3.00[101.60/76.20]", RESTRIP TO .25 ±.06[6.35±1.52] AND ATTACH SOCKET TERMINALS AND TERMINAL HSG.
8. SWITCH LEADS MUST MEET PULL TEST PER PROCESS STANDARD.
9. ATTACHED TERMINALS MUST MEET SPECIFICATIONS ON PROCESS STANDARD.
10. ASSEMBLE LOCKWASHER BETWEEN CAPACITOR BRACKET AND SWITCH COVER.

DRAWING REVISION AH		REVISION BY G.ZHAO	DATE 07-16-2015	TOLERANCES UNLESS OTHERWISE SPECIFIED:		DRAWN BY S.DALTON		REGAL™ Regal Beloit America, Inc.	
ECO-0081097		APPROVED BY G.ZHANG	DATE 07-16-2015	DEC.	INCH	MM	ANGLE	DATE 12-13-2001	
ECO DESCRIPTION SEE ECO				.XX	+0.01	[+0.25]		APPROVED BY	DESCRIPTION MODEL-SFHP-3.3
				XXX	+0.005	[+0.127]		DATE	MATERIAL OUTLINE
				XXXX	+0.0005	[+0.0127]		REFERENCE	PROCESS/FINISH BLACK PAINT
				REMOVE BURRS & BREAK SHARP EDGES: .003/.015 [0.076/381] X 45°		CORNER FILLETS: R.02 [51]		THIRD ANGLE PROJECTION	SIZE D
				MACHINED SURFACES: 125/32		mm SHOWN IN [BRACKETS]		DRAWING NUMBER 71621821	SHEET 2 OF 2