

- NOTES  
 1. THRU AIR SPACING BETWEEN WIRE AND METAL .10 MIN.  
 2. TIE BOLT TORQUE TOLERANCE 7-12 IN. LBS.  
 3. FOR WASHER SET-UP, SEE CHART C600 0279, DETAIL "A".  
 4. SALES TO SPECIFY ON P.O. WHICH PACK TO USE.

ECO	REV.	DATE	SPEC/CHECK
639337	5	4-1-09	MKR/MKR
624077	2	9-3-99	JAK/XXX
631898	3	10-10-03	MKR/MKR
638411	4	7-16-08	LDC/LDC

A. SEE PACKAGING MANUAL PAGE 2 FOR PACKAGING PROCEDURE.

1 MOTOR/CARTON;  
 14 MOTORS/LAYER;  
 6 LAYERS/PALLET;  
 84 MOTORS/PALLET.

B. SEE DRAWING 8785 6079 SH. 6 FOR PALLET LAYOUT.

C. CENTER LABEL, 6119 6769, ON END OF CARTON.

D. PLACE PAMPHLET, 6122 4579, IN CARTON WITH MOTOR.

71xx xxxx,M

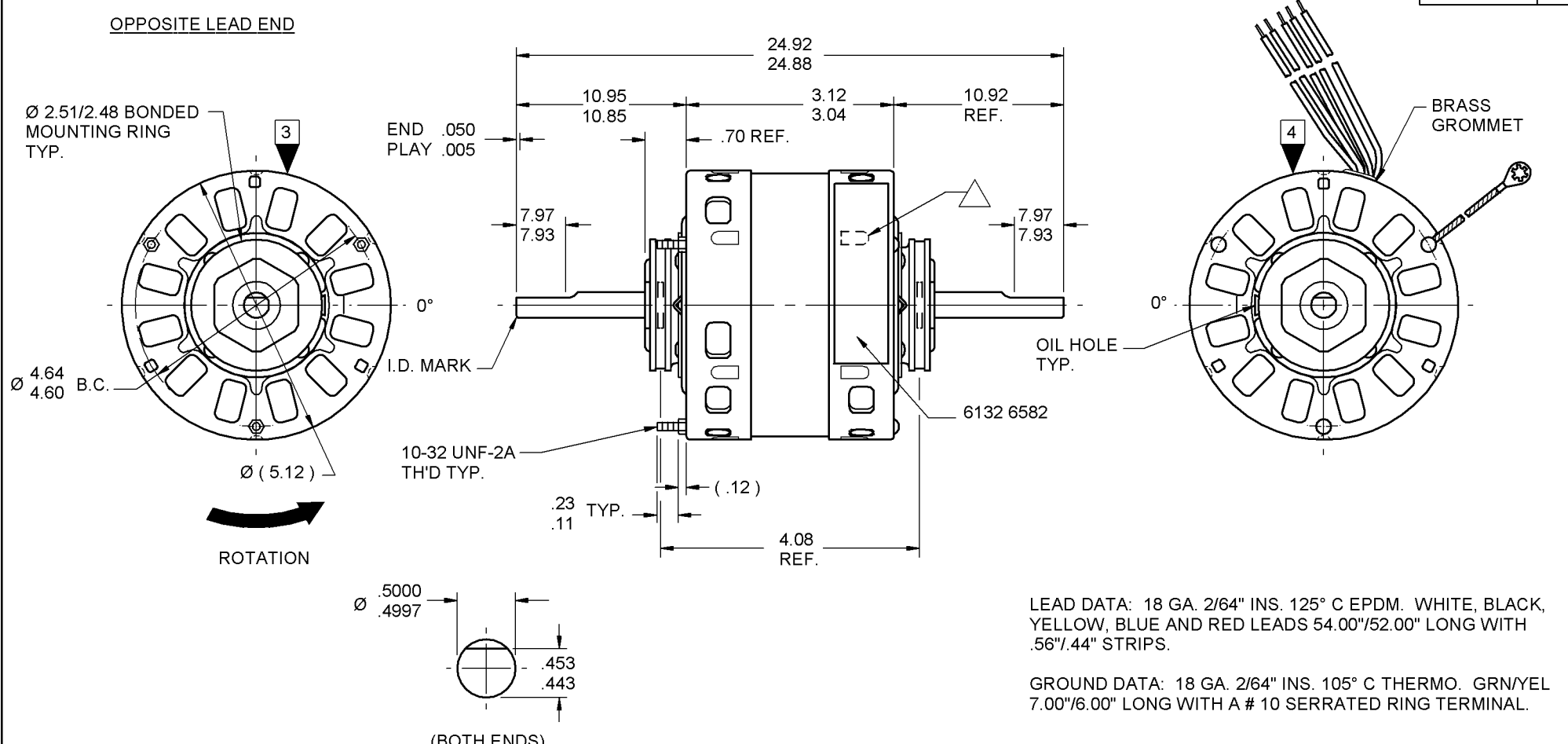
71xx xxxxC

71xx xxxxZ

PRODUCTION TEST AT IDLE 115 VOLTS 60 HZ		MOTOR SPEED	PERFORMANCE TEST 115 VOLTS 60 HZ 1 PH 1/15 HP										
AMP	WATT		IDLE			LOADED				LOCKED			BREAK
			RPM	AMP	WATT	OZ/IN	RPM	AMP	WATT	OZ/IN	AMP	WATT	OZ/IN
2.42 — 1.98	146.3 — 119.7	HIGH	1176	2.20	133	72	1050	2.5	185	29	3.2	234	84
1.88 — 1.54	114.4 — 93.6	MED. HIGH	1174	1.71	104	55	1050	2.0	144	21	2.6	181	63
1.32 — 1.08	78.1 — 63.9	MED. LOW	1165	1.20	71	35	1050	1.4	97	17	1.7	117	39
.88 — .72	51.7 — 42.3	LOW	1156	.80	47	24	1050	.9	63	11	1.2	76	28

HI-POT TEST 2000 VOLTS  
 MAX LEAKAGE CURRENT 5 mA

7151 3715 MA



7151 3715 = MADE IN U.S.A.  
 7151 3715M = ASSEMBLED IN MEXICO

**FASCO** FASCO INDUSTRIES, INC. MOTOR DIVISION

V. 115 HZ 50/60 PH 1 INS CL B  
 HP 1/15-1/20-1/30-1/50 AO NO. 7151-3715  
 AMP 2.4-1.6-1.1-.8 TYPE U51B1 40° C AMB  
 RPM 1050 (4 SPD) THERMALLY PROTECTED

**MODEL D389**

CONNECTION DIAGRAM

WHITE — LINE  
 BLK-HI — LINE  
 YEL-M. HI — LINE  
 BLU-M. LO — LINE  
 RED-LO — LINE

SAFETY WARNING  
 THIS MOTOR MUST BE GROUNDED IN ACCORDANCE WITH LOCAL OR NATIONAL ELECTRICAL CODES TO PREVENT POSSIBLE INJURY DUE TO ELECTRICAL SHOCK

DATE/BAR CODE AREA PER 8882 6003

6132 6582,M REV. 3

SPECIAL INSTRUCTIONS: FLATS TO BE PARALLEL WITHIN ± 20°. SHAFT IS BONDERIZED.

△ LANCE MUST BE COMPLETELY COVERED BY NAMEPLATE. PAMPHLET PACKED WITH MOTOR.

MOTORS PACKED MAX. PER SKID: PALLET PACK, 84 CARTON PACK, TRAY PACK.

CUSTOMER: FASCO DISTRIBUTING CO.

PART NUMBER: D389

APPLICATION: DIST. SALES  
 FINISH COLOR: GRAY/FDC  
 MOTOR WEIGHT: LBS.  
 ENVIRONMENT: DAMP  
 INSULATION CLASS: B

MOTOR TYPE: SHADED POLE

MOTOR NUMBER: 7151 3715 M

REV. 5

B	LA	FR	A	S	C	E	B	A
00	51	11	V	03	JV	8	8	0

LOCATE NAMEPLATE .05 FROM EDGE OF LEAD END COVER TO READ RIGHT FROM LEAD END OF MOTOR CENTER AT 20° CWLE.

SIZE 3.50 X 1.00

If Printed, this is an Uncontrolled Document