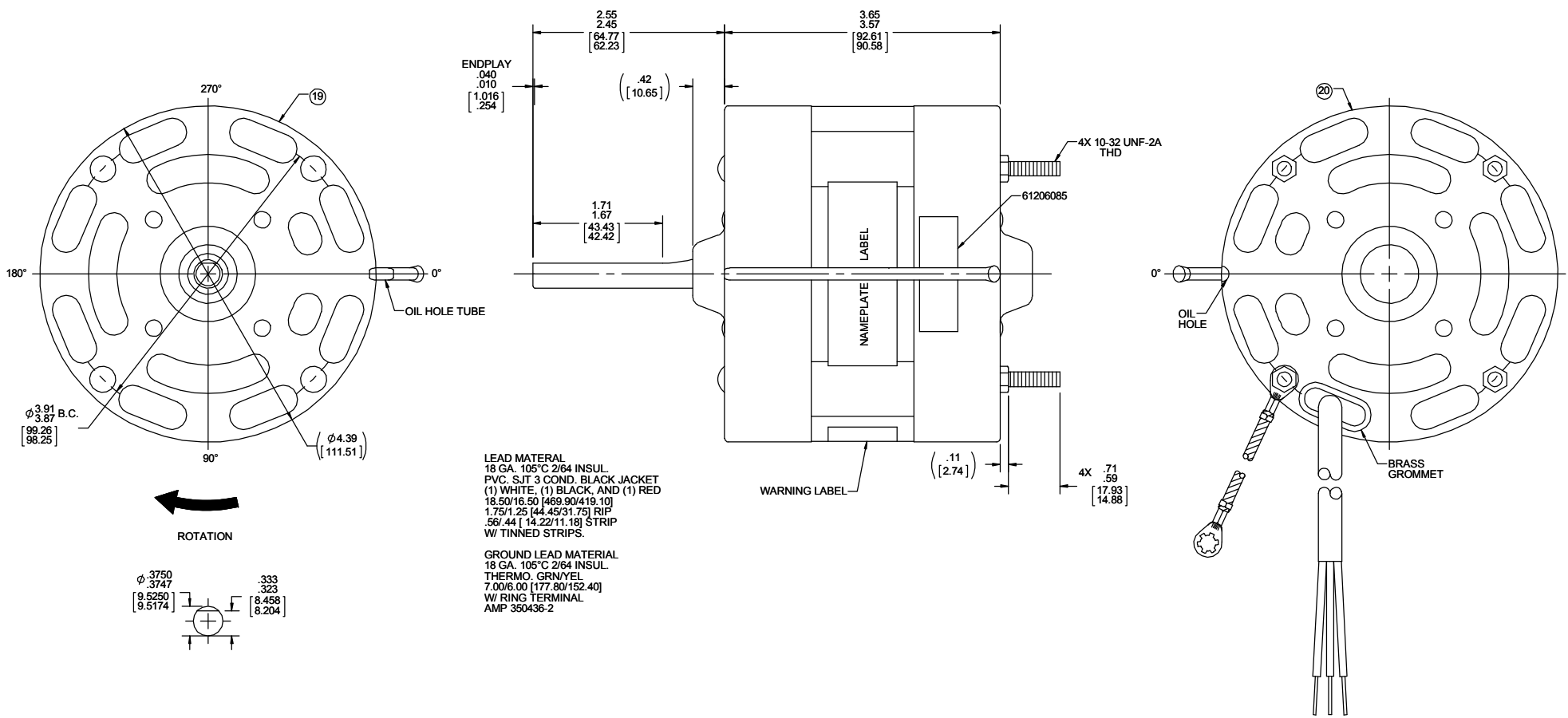


OPPOSIT LEAD END

LEAD END



LEAD MATERIAL
 18 GA. 105°C 2/64 INSUL.
 PVC. SJT 3 COND. BLACK JACKET
 (1) WHITE, (1) BLACK, AND (1) RED
 18.50/16.50 [469.90/419.10]
 1.75/1.25 [44.49/31.75] RIP
 .56/ .44 [14.22/11.18] STRIP
 W/ TINNED STRIPS.

GROUND LEAD MATERIAL
 18 GA. 105°C 2/64 INSUL.
 THERMO. GRN/YEL
 7.00/6.00 [177.80/152.40]
 W/ RING TERMINAL
 AMP 350436-2

NOTES:

1. THRU AIR SPACING BETWEEN WIRE AND METAL .063 [1.600] MIN.
2. SHAFT IS BONDERIZED.
3. TIE BOLT TORQUE TOLERANCE 7 - 10 IN. LBS.
4. ROTOR FREENESS TO BE WITHIN 3/4 OZ. IN.
5. LEADS TO BE TIN DIPPED.
6. FOR WASHER SET-UP, SEE CHART C6000279, DETAIL "H".
7. MAXIMUM 0.1 Ω RESISTANCE BETWEEN GROUND TERMINAL AND MOTOR FRAME.
8. LOCATE TOP LABEL, 61206085, AT 0° AS SHOWN TO READ RIGHT FROM LEAD END OF MOTOR.
9. MOTORS MUST START WITH 90 VOLTS APPLIED TO LOWEST SPEED.
10. SALES TO SPECIFY ON P.O. WHICH P.O. TO USE.
11. SEE PACKAGING MANUAL PAGE 2 FOR PACKAGING PROCEDURES.
12. PACK 1 PER CONTAINER, 40 PER LAYER, 6 LAYERS PER PALLET, 240 MAX. PER PALLET.
13. PLACE PAMPHLET, 61224579, IN CONTAINER WITH MOTOR.
14. SEE DRAWING 87856079 SHEET 1 FOR PALLET LAYOUT.
15. CENTER LABEL, 61225961, ON END OF CARTON.
16. CARTON LABELS MUST ALL FACE ONE DIRECTION TOWARD THE OPEN END OF THE PALLET. PER 88834408.
17. NO PACKING TAPE OVER CARTON LABELS.

SAFETY WARNING
 This motor must be grounded in accordance with local or national electrical codes to prevent possible injury due to electrical shock



AVERTISSEMENT DE SÉCURITÉ
 Ce moteur doit être fondée sur conformément à la réglementation locale ou national électrique codes pour prévenir d'éventuelles blessures en raison de choc électrique

61305568

61206085

TOP

00464072

00464551

FASCO MOTOR DIVISION

Assembled in Mexico
 No. 71080169 TYPE U8 AO PH 1
 115 V 60 Hz 1/8-1/20 HP
 Model D374 LR6319
 4.0-2.5 A
 1500 RPM (2 SPD)
 Thermally Protected OSB
 Max Amb: 40°C

Connection Diagram
 White Line
 Black-HI Line
 Red-LO Line

61299553

CUSTOMER:	FASCO DIST.	APPLICATION:	DIST. SALES	HI-POT TEST 2000 VOLTS MAX. LEAKAGE CURRENT 5mA			
CUSTOMER PN:	D374	MOTOR WEIGHT:	DRY				
		ENVIRONMENT:					
MOTOR TYPE		REFERENCE SAMPLE					
SHADED POLE		A	S	C	E	B	A
B	LA	FR	V	06	GC	6	5
00	08	10					0
TYPICAL PERFORMANCE AT 115 VOLTS 60 HZ 1PH 1/8 HP							
IDLE				LOADED			
MOTOR SPEED	RPM	AMP	WATT	IN OZ	RPM	AMP	WATT
HIGH	1769	3.07	163	88	1500	3.77	274
				IN OZ	AMP	WATT	IN OZ
LOW	1765	1.86	100	56	1500	2.38	170
				IN OZ	AMP	WATT	IN OZ
							57

PRODUCTION TEST AT IDLE		MOTOR SPEED
115 VOLTS 60 Hz		
AMP	WATT	HIGH
3.38 - 2.76	179.3 - 146.7	
2.05 - 1.67	110.0 - 90.0	LOW

DRAWING REVISION AA	REVISION BY SDM	DATE 8/7/2017	TOLERANCES UNLESS OTHERWISE SPECIFIED: DEC. INCH mm ANGLE .X ±0.1 [±2.5] ±1° .XX ±0.01 [±0.25] .XXX ±0.005 [±0.127] .XXXX ±0.0005 [±0.0127]	DRAWN BY SDM	DATE 8/7/2017	DESCRIPTION OUTLINE MOTOR ASSY
ECO-0128663	APPROVED BY SED	DATE 8/7/2017	REMOVE BURRS & BREAK SHARP EDGES: .0031 [0.078] X 45° CORNER FILLETS: R.02 [±.51]	APPROVED BY SED	DATE 8/7/2017	MATERIAL PROCESS/FINISH GRAY
CONVERT TO SOLID WORKS			MACHINED SURFACES: .125/ 3/2 INCH/ mm SHOWN IN [BRACKETS]	THIRD ANGLE PROJECTION	SIZE C	DRAWING NUMBER 71080169
REGAL Regal Beloit America, Inc.						SHEET 1 OF 1