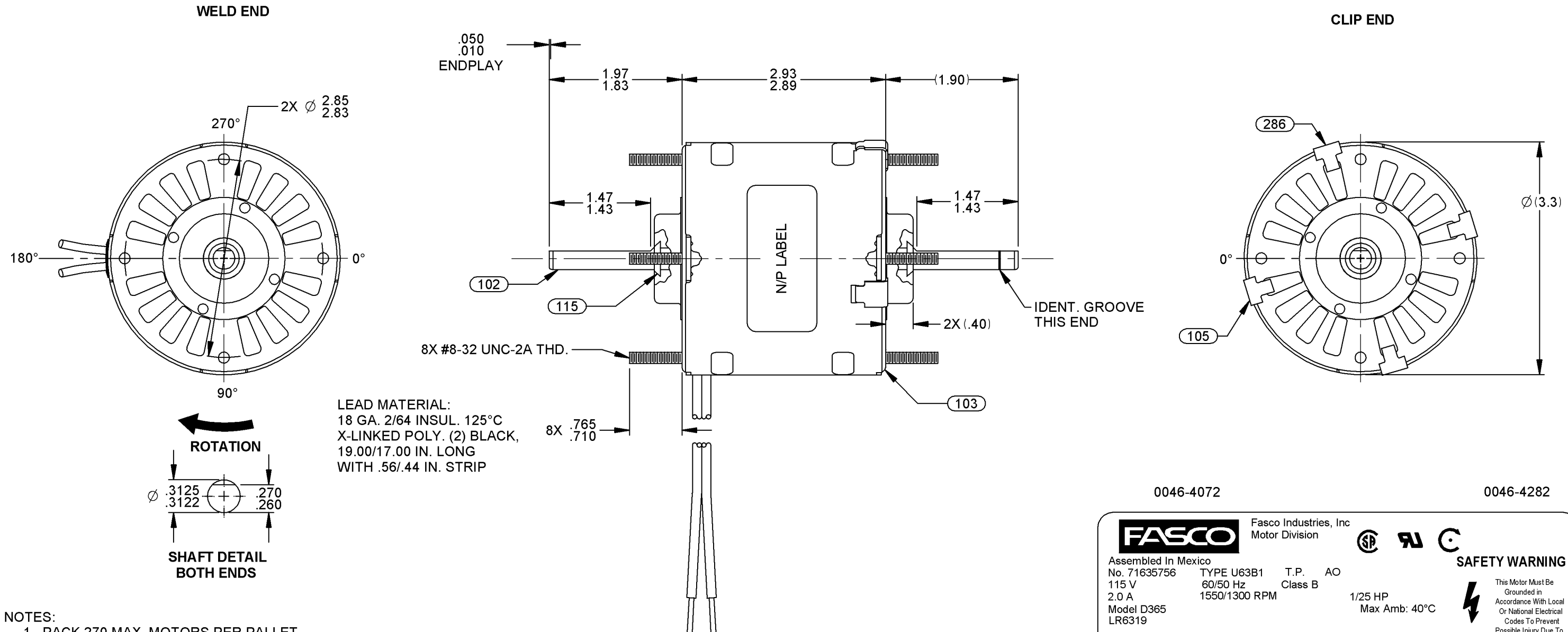


16	REVISED N/P FORMAT & REVISED NOTES & TOLERANCES TO CURRENT STANDARDS. RPT 11/26/07	17	REMOVED BARCODE FROM LABEL, AND ADD CSA NUMBER MLM 1/21/10	18	ADDED CARTON LABEL NOTES 4005678 MLM 6/6/12	STANDARD TOLERANCES: ANGULAR +/- 1 DEGREE 2 PLACE DECIMAL +/- .01 3 PLACE DECIMAL +/- .005	
----	---	----	---	----	---	---	--



- NOTES:  
1. PACK 270 MAX. MOTORS PER PALLET.  
2. NO PACKAGING TAPE OVER CARTON LABEL.

0046-4072 0046-4282

**FASCO** Fasco Industries, Inc Motor Division

Assembled In Mexico  
No. 71635756 TYPE U63B1 T.P. AO  
115 V 60/50 Hz Class B  
2.0 A 1550/1300 RPM  
Model D365 LR6319

**SAFETY WARNING**  
This Motor Must Be Grounded in Accordance With Local Or National Electrical Codes To Prevent Possible Injury Due To Electrical Shock

61299553

FRONT SHAFT POSITION <b>HORIZONTAL</b> UP DOWN	TYPICAL PERFORMANCE AT 115 VOLTS 50/60 Hz.												CUSTOMER: FASCO DIST.	<b>FASCO</b> FASCO MOTORS GROUP AC MOTOR/BLOWER DIVISION
	MOTOR SPEED	IDLE			LOADED			LOCKED			BREAK	PART NUMBER: D365		
		R.P.M.	AMP.	WATT	IN.OZ.	R.P.M.	AMP.	WATT	IN.OZ.	AMP.	WATT	IN.OZ.	APPLICATION:	CONFIDENTIAL: DO NOT DUPLICATE OR DISCLOSE TO THIRD PARTIES WITHOUT WRITTEN PERMISSION OF FASCO MOTORS GROUP, AC MOTOR/BLOWER DIVISION.
	50 Hz	1456	1.95	106	37.2	1300	2.02	145	19.2	2.90	229	51.4	MOTOR WEIGHT: 3.31 LBS.	MOTOR TYPE
	60 Hz	1763	1.46	81	34.8	1550	1.71	127	15.7	2.48	184	41.6	ENVIRONMENT: DRY	SHADED POLE
CUSTOMER APPROVAL: SIGNED: DATE:													FINISH COLOR: BLACK	DRAWING NUMBER
													DRAWN BY: S. DALTON	7163 5756
													DATE DRAWN: 1-3-2001	REV. 18
	B	LA	FR	A	S	C	E	B	A					
	00	63	30	V	05	OH	5	4	0					

If Printed, this is an Uncontrolled Document.