

NOTES:

1. THRU AIR SPACING BETWEEN WIRE AND METAL .094 MIN.
2. TIE BOLT TOLERANCE 7 - 12 IN. LBS.
3. FOR WASHER SET-UP, SEE CHART C600 0279, DETAIL "A".
4. SALES TO SPECIFY ON P.O. WHICH PACK TO USE.

ECO	REV.	DATE	SPEC/CHECK
631865	5	10-3-03	DJK/RWS
638385	6	7-11-08	MKR/MKR
639157	7	3-5-09	MKR/MKR
641681	8	10-19-10	MKR/MKR

A. SEE PACKAGING MANUAL PAGE 2 FOR PACKAGING PROCEDURES.

1 MOTOR/CARTON;
16 MOTORS/LAYER;
6 LAYERS/PALLET;
96 MOTORS/PALLET.

B. SEE DRAWING 8785 6079 SH. 1 FOR PALLET LAYOUT.

C. CENTER LABEL, 6120 6112, ON END OF CARTON.

D. PLACE PAMPHLET, 6122 4579, IN CARTON WITH MOTOR.

71xx xxxxR

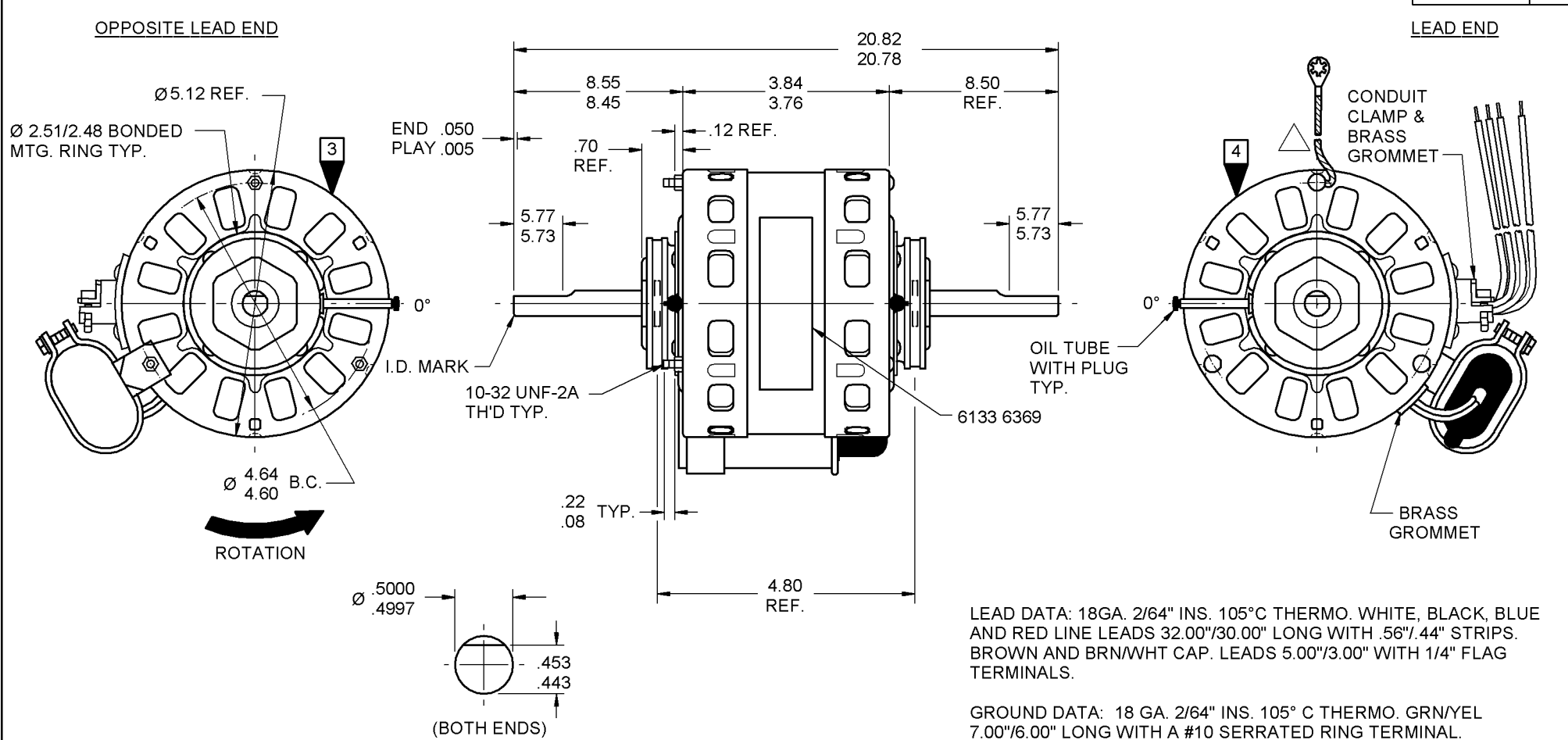
71xx xxxxC

71xx xxxxZ

PRODUCTION TEST AT IDLE 115 VOLTS 60 HZ		MOTOR SPEED	PERFORMANCE TEST 115 VOLTS 60 HZ 1 PH 1/6 HP CAP. 4 MFD 370 VAC											
AMP	WATT		IDLE			LOADED				LOCKED			BREAK	
			RPM	AMP	WATT	OZ/IN	RPM	AMP	WATT	OZ/IN	AMP	WATT	OZ/IN	
1.52 — 1.24	106.7 — 87.3	HIGH	1191	1.38	97	188.0	1050	2.70	282	60.0	4.61	476	210.0	
.84 — .68	68.2 — 55.8	MED.	1185	.76	62	108.0	1050	1.68	170	36.0	2.95	288	117.0	
.41 — .33	36.3 — 29.7	LOW	1184	.37	33	61.0	1050	.87	87	24.0	1.66	151	73.0	

HI-POT TEST 2000 VOLTS
MAX LEAKAGE CURRENT 5 mA

7186 0023 MA



7186 0023 = MADE IN U.S.A.
7186 0023R = ASSEMBLED IN MEXICO

FASCO FASCO INDUSTRIES, INC. MOTOR DIVISION

MODEL D354

V.115 HZ 60 PH 1 ROT →

HP 1/6-1/10-1/20 CAP 4 MFD 370 VAC

AMP 2.8-1.8-1.0 TYPE U186B1 NO. 7186-0023

INS CL B 40°C AMB A0 RPM 1050 (3 SPD)

SAFETY WARNING

THIS MOTOR MUST BE GROUNDED IN ACCORDANCE WITH LOCAL OR NATIONAL ELECTRICAL CODES TO PREVENT POSSIBLE INJURY DUE TO ELECTRICAL SHOCK

DATE/BAR CODE AREA PER 8882 6003

6133 6369,R REV. 3

LOCATE Ⓞ OF NAMEPLATE ON Ⓞ OF STATOR TO READ RIGHT FROM LEAD END OF MOTOR CENTER AT 0°.

SIZE 3.50 X 1.00

SPECIAL INSTRUCTIONS: FLATS TO BE PARALLEL WITHIN ± 20°.	
SHAFT IS BONDERIZED. ASSEMBLE CAPACITOR SO THAT IT WILL NOT INTERFERE WITH CONDUIT CLAMP SCREWS. GROUND STRAP TERMINAL IS NOT TO EXTEND BEYOND MOTOR PERIPHERY. PAMPHLET PACKED WITH MOTOR.	
MOTORS PACKED MAX. PER SKID: ___ PALLET PACK, 96 CARTON PACK, ___ TRAY PACK.	
CUSTOMER: FASCO DISTRIBUTING CO.	PROPRIETARY: DO NOT DUPLICATE OR DISCLOSE TO THIRD PARTIES WITHOUT WRITTEN PERMISSION OF FASCO IND. INC., ELDON MO.
PART NUMBER: D354	FASCO INDUSTRIES, INC. MOTOR DIVISION ELDON PLANT
APPLICATION: DIST. SALES	MOTOR TYPE P.S.C.
FINISH COLOR: GRAY	MOTOR NUMBER 7186 0023
MOTOR WEIGHT: 9.95 LBS.	R
ENVIRONMENT: DRY	REV. 8
INSULATION CLASS: B	

If Printed, this is an Uncontrolled Document.