

NOTES

1. THRU AIR SPACING BETWEEN WIRE AND METATL .063 MIN.
2. TIE BOLT TORQUE TOLERANCE 7 - 10 IN. LBS.
3. ROTOR FREENESS TO BE WITHIN 3/4 OZ. IN.
4. FOR WASHER SET-UP, SEE CHART C600 0279, DETAIL "H".
5. MAXIMUM 0.1 Ω RESISTANCE BETWEEN GROUND TERMINAL AND MOTOR FRAME.
6. SALES TO SPECIFY ON P.O. WHICH PACK TO USE.

ECO	REV.	DATE	SPEC/CHECK
620170	8	12-12-97	LDC/RWS
631508	9	7-24-03	MKR/MKR
640592	10	10-05-09	GAE/GAE

- A. SEE PACKAGING MANUAL PAGE 2 FOR PACKAGING PROCEDURE.
- 1 MOTOR/CARTON;
 - 20 MOTORS/LAYER;
 - 6 LAYERS/PALLET;
 - 120 MOTORS/PALLET.
- B. SEE DRAWING 8785 6079 SH. 1 FOR PALLET LAYOUT.
- C. CENTER LABEL, 6119 6399, ON END OF CARTON.
- D. PLACE PAMPHLET, 6122 4579, IN CARTON WITH MOTOR.

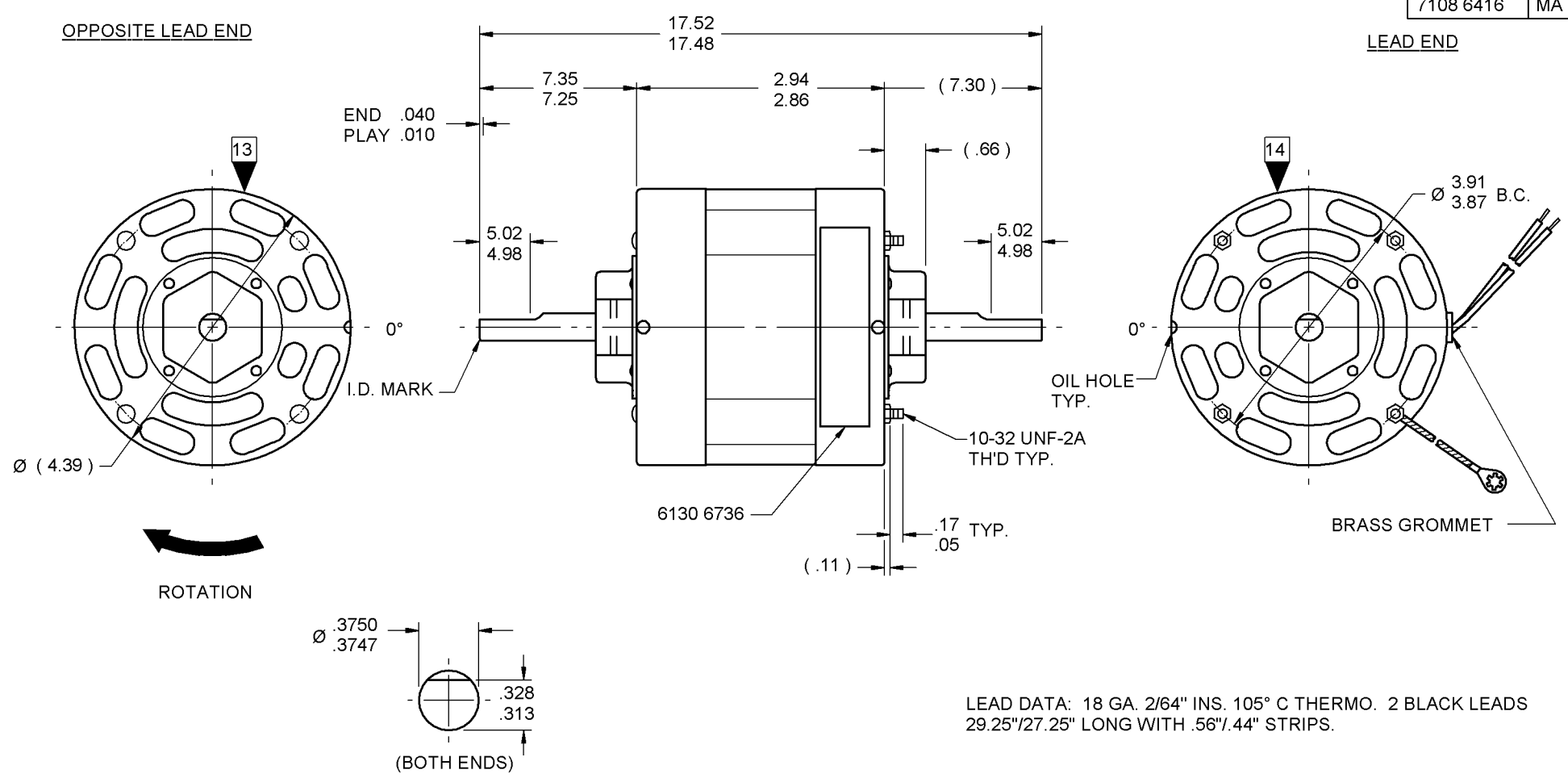


PRODUCTION TEST AT IDLE 115 VOLTS 60 HZ		MOTOR SPEED	PERFORMANCE TEST 115 VOLTS 60 HZ 1 PH 1/25 HP										
AMP	WATT		IDLE			LOADED				LOCKED			BREAK
			RPM	AMP	WATT	OZ/IN	RPM	AMP	WATT	OZ/IN	AMP	WATT	OZ/IN
1.32 — 1.08	79.2 — 64.8	HIGH	1721	1.2	72	22	1550	1.3	96	11	1.8	132	28

HI-POT TEST 2000 VOLTS
MAX LEAKAGE CURRENT 5 mA

MOTORS MUST START WITH 90 VOLTS APPLIED TO LOWEST SPEED.

7108 6416 MA



7108 6416 = MADE IN U.S.A.
7108 6416M = ASSEMBLED IN MEXICO

FASCO FASCO INDUSTRIES, INC. MOTOR DIVISION **MODEL D333**

V. 115 HZ 60 PH 1 ROT
HP 1/25 AMP 1.4 AO NO. 7108-6416
RPM 1550 TYPE U8 THERMALLY PROTECTED

SAFETY WARNING
THIS MOTOR MUST BE GROUNDED IN ACCORDANCE WITH LOCAL OR NATIONAL ELECTRICAL CODES TO PREVENT POSSIBLE INJURY DUE TO ELECTRICAL SHOCK

DATE/BAR CODE AREA PER 8882 6003

6130 6736, M REV. 5

LOCATE NAMEPLATE .03 FROM EDGE OF LEAD END COVER TO READ RIGHT FROM LEAD END OF MOTOR CENTER AT 0°.

SIZE 3.50 X 1.00

SPECIAL INSTRUCTIONS: SHAFT IS BONDERIZED. FLATS TO BE PARALLEL WITHIN ±20° . PAMPHLET PACKED WITH MOTOR.

MOTORS PACKED MAX. PER SKID: ___ PALLET PACK, 120 CARTON PACK.

CUSTOMER: FASCO DISTRIBUTING CO.

PART NUMBER: D333

APPLICATION: DIST. SALES
FINISH COLOR: GRAY
MOTOR WEIGHT: LBS.
ENVIRONMENT: DAMP
INSULATION CLASS: A

MOTOR TYPE: SHADED POLE

B	LA	FR	A	S	C	E	B	A
00	08	10	V	01	BT	5	6	0

MOTOR NUMBER: 7108 6416 M
REV. 10