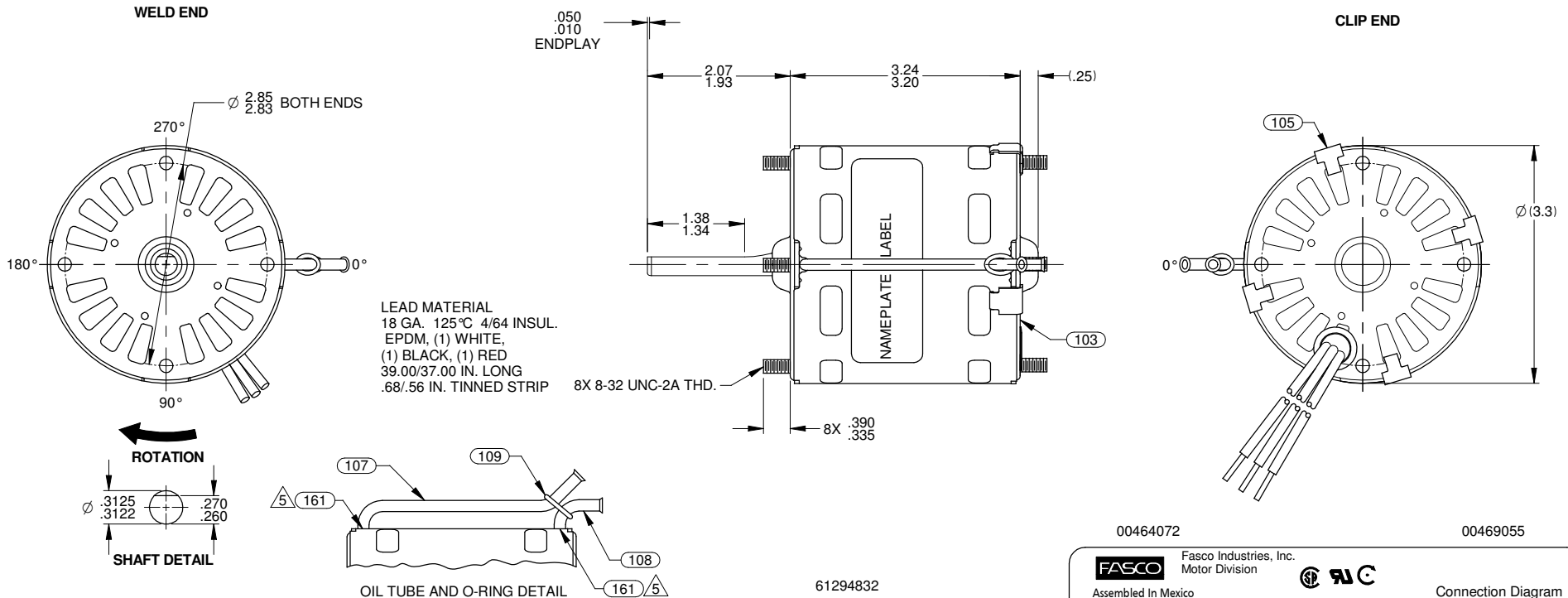


26	CHANGED N/P FORMAT & UPDATED STANDARDS	PLA 02/27/08	27	REMOVED BARCODE FROM NAMEPLATE	BP 08/02/2010	28	ADD LOCTITE TO HOLD OIL TUBES TO BRG. RET.	4012091 BP 3/31/2014	STANDARD TOLERANCES: ANGULAR +/- 1 DEGREE 2 PLACE DECIMAL +/- .01 3 PLACE DECIMAL +/- .005
----	--	--------------	----	--------------------------------	---------------	----	--	-------------------------	---



NOTES:

1. ASSEMBLE OIL TUBES AS CLOSE TO SLEEVE AS POSSIBLE.
2. LEADS TO BE TINNED PER PROCESS STANDARD.
3. 280 MAXIMUM MOTORS PER PALLET.
4. NO PACKING TAPE OVER CARTON LABEL.

FRONT SHAFT POSITION		* TYPICAL PERFORMANCE AT 115 VOLTS 60 Hz.										CUSTOMER: FASCO DIST.		FASCO MOTORS GROUP AC MOTOR/BLOWER DIVISION CONFIDENTIAL : DO NOT DUPLICATE OR DISCLOSE TO THIRD PARTIES WITHOUT WRITTEN PERMISSION OF FASCO MOTORS GROUP, AC MOTOR/BLOWER DIVISION.											
HORIZONTAL		MOTOR SPEED	IDLE			LOADED			LOCKED			BREAK	PART NUMBER: D332							APPLICATION:					
			R.P.M.	AMP.	WATT	IN.OZ.	R.P.M.	AMP.	WATT	IN.OZ.	AMP.	WATT	IN.OZ.	MOTOR WEIGHT: 4.00 LBS.	ENVIRONMENT: DRY										
CUSTOMER APPROVAL:		HIGH	1750	1.27	75	29.4	1550	1.46	107	12.1	2.18	157	31.7	FINISH COLOR: BLACK		SHADED POLE		DRAWING NUMBER							
SIGNED:		LOW	1750	.60	36	11.5	1600	.68	47	5.3	.93	64	13.6	DRAWN BY: SETH JAQUES		7163 1656		REV.							
DATE:														DATE DRAWN: 1-7-2003		B	LA	FR	A	S	C	E	B	A	REV.
														00	63	30	V	06	GM	6	3	0			28