

NOTES

1. THRU AIR SPACING BETWEEN WIRE AND METAL .10 MIN.
2. TIE BOLT TORQUE TOLERANCE 10 - 15 IN. LBS.
3. FOR WASHER SET-UP, SEE CHART C600 0279, DETAIL "H".
4. ROTOR FREENESS TO BE WITHIN 1 OZ. IN.
5. SALES TO SPECIFY ON P.O. WHICH PACK TO USE.

ECO	REV.	DATE	SPEC/CHECK
631924	27	10-14-03	MKR/MKR
636917	28	1-10-07	MDH/RWS
638907	29	12-09-08	GAE/GAE
639288	30	3-24-09	MKR/MKR

- A. SEE PACKAGING MANUAL PAGE 2 FOR PACKAGING PROCEDURE.
- 1 MOTOR/CARTON;
 - 24 MOTORS/LAYER;
 - 6 LAYERS/PALLET;
 - 144 MOTORS/PALLET.
- B. SEE DRAWING 8785 6079 SH. 1 FOR PALLET LAYOUT.
- C. CENTER LABEL, 6119 6121, ON END OF CARTON.
- D. PLACE PAMPHLET, 6122 4579, IN CARTON WITH MOTOR.

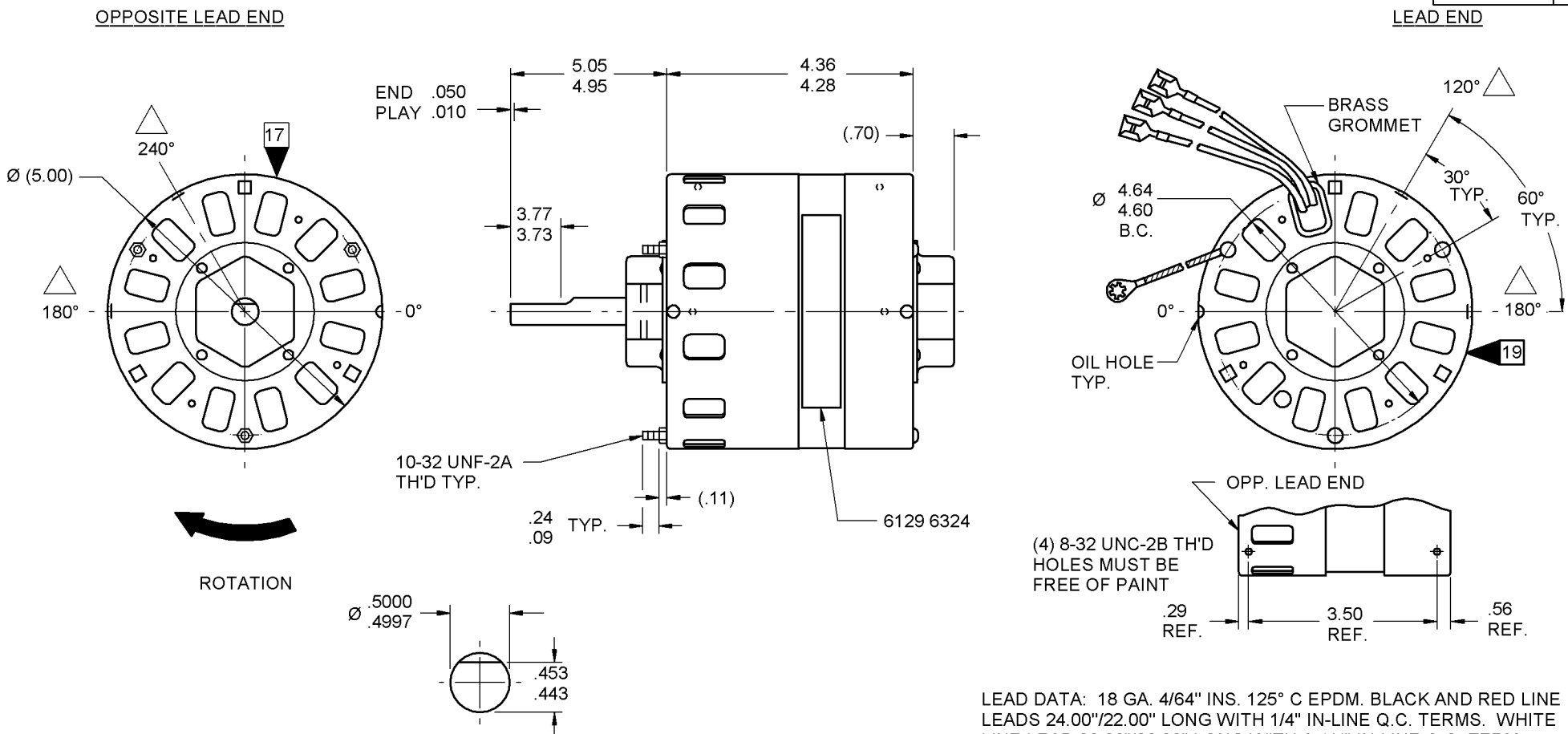
71xx xxxx,M

71xx xxxxC

If Printed, this is an Uncontrolled Document

PRODUCTION TEST AT IDLE 230 VOLTS 60 HZ		MOTOR SPEED	PERFORMANCE TEST 230 VOLTS 60 HZ 1 PH 1/15 HP										
AMP	WATT		IDLE			LOADED				LOCKED			BREAK
			RPM	AMP	WATT	OZ/IN	RPM	AMP	WATT	OZ/IN	AMP	WATT	OZ/IN
1.98 — 1.62	227.7 — 186.3	HIGH	1179	1.8	207	127	1050	2.2	295	46.3	2.8	369	137
1.32 — 1.08	145.2 — 118.8	LOW	1177	1.2	132	84	1050	1.4	188	32.0	1.8	229	90
HI-POT TEST 2000 VOLTS													
MAX LEAKAGE CURRENT 5 mA													

7151 0062 MA



LEAD DATA: 18 GA. 4/64" INS. 125° C EPDM. BLACK AND RED LINE LEADS 24.00"/22.00" LONG WITH 1/4" IN-LINE Q.C. TERMS. WHITE LINE LEAD 22.00"/20.00" LONG WITH A 1/4" IN-LINE Q.C. TERM.

GROUND DATA: 18 GA. 2/64" INS. 105° C THERMO. GRN/YEL 7.00"/6.00" LONG WITH A #10 SERRATED RING TERMINAL.

7151 0062 = MADE IN U.S.A.
7151 0062M = ASSEMBLED IN MEXICO

FASCO FASCO INDUSTRIES, INC. MOTOR DIVISION THERMALLY PROTECTED

V. 230 HZ 50/60 AO PH 1 ROT CONNECTION DIAGRAM
HP 1/8-1/15 TYPE U51 NO. 7151-0062 WHITE — LINE
AMP 2.3-1.5 RPM 1050 (2 SPD) BLACK-HI — — LINE
RED-LO - - - - - LINE

MODEL D314

SAFETY WARNING
THIS MOTOR MUST BE GROUNDED IN ACCORDANCE WITH LOCAL OR NATIONAL ELECTRICAL CODES TO PREVENT POSSIBLE INJURY DUE TO ELECTRICAL SHOCK

DATE/BAR CODE AREA PER 8882 6003

6129 6324,M REV. 10

LOCATE ϕ OF NAMEPLATE ON ϕ OF STATOR TO READ RIGHT FROM LEAD END OF MOTOR CENTER AT 0°.

SIZE 3.50 X 1.00

SPECIAL INSTRUCTIONS: SHAFT IS BONDERIZED. ∇ CENTERLINE OF HOLES TO BE ALIGNED TO WITHIN 1.4" MAX. PAMPHLET PACKED WITH MOTOR.

MOTORS PACKED MAX. PER SKID: PALLET PACK, 144 CARTON PACK.

CUSTOMER: FASCO DISTRIBUTING CO.	PROPRIETARY: DO NOT DUPLICATE OR DISCLOSE TO THIRD PARTIES WITHOUT WRITTEN PERMISSION OF FASCO IND. INC., ELDON MO.
PART NUMBER: D314	FASCO INDUSTRIES, INC. MOTOR DIVISION ELDON PLANT
APPLICATION: COUNTER SALES	MOTOR TYPE
FINISH COLOR: GRAY	SHADED POLE
MOTOR WEIGHT: LBS.	
ENVIRONMENT: DRY	
INSULATION CLASS: A	

MOTOR NUMBER	REV.
7151 0062	30
M	