

- NOTES:
1. THRU AIR SPACING BETWEEN WIRE AND METAL .10 MIN.
 2. TIE BOLT TOLERANCE 7 - 12 LBS.
 3. FOR WASHER SET-UP, SEE CHART C600 0279, DETAIL "A".
 4. SALES TO SPECIFY ON P.O. WHICH PACK TO USE.

ECO	REV.	DATE	SPEC/CHECK
631535	41	7-31-03	BJP/RWS
638403	42	07-16-08	GAE/GAE
639186	43	03-10-09	GAE/GAE
0053056	44	6/20/2014	KSA/SED

71xx xxxx,M

A. SEE PACKAGING MANUAL PAGE 2 FOR PACKAGING PROCEDURE.

1 MOTOR/CARTON;
10 MOTORS/LAYER;
6 LAYERS/PALLET;
60 MOTORS/PALLET.

71xx xxxxC

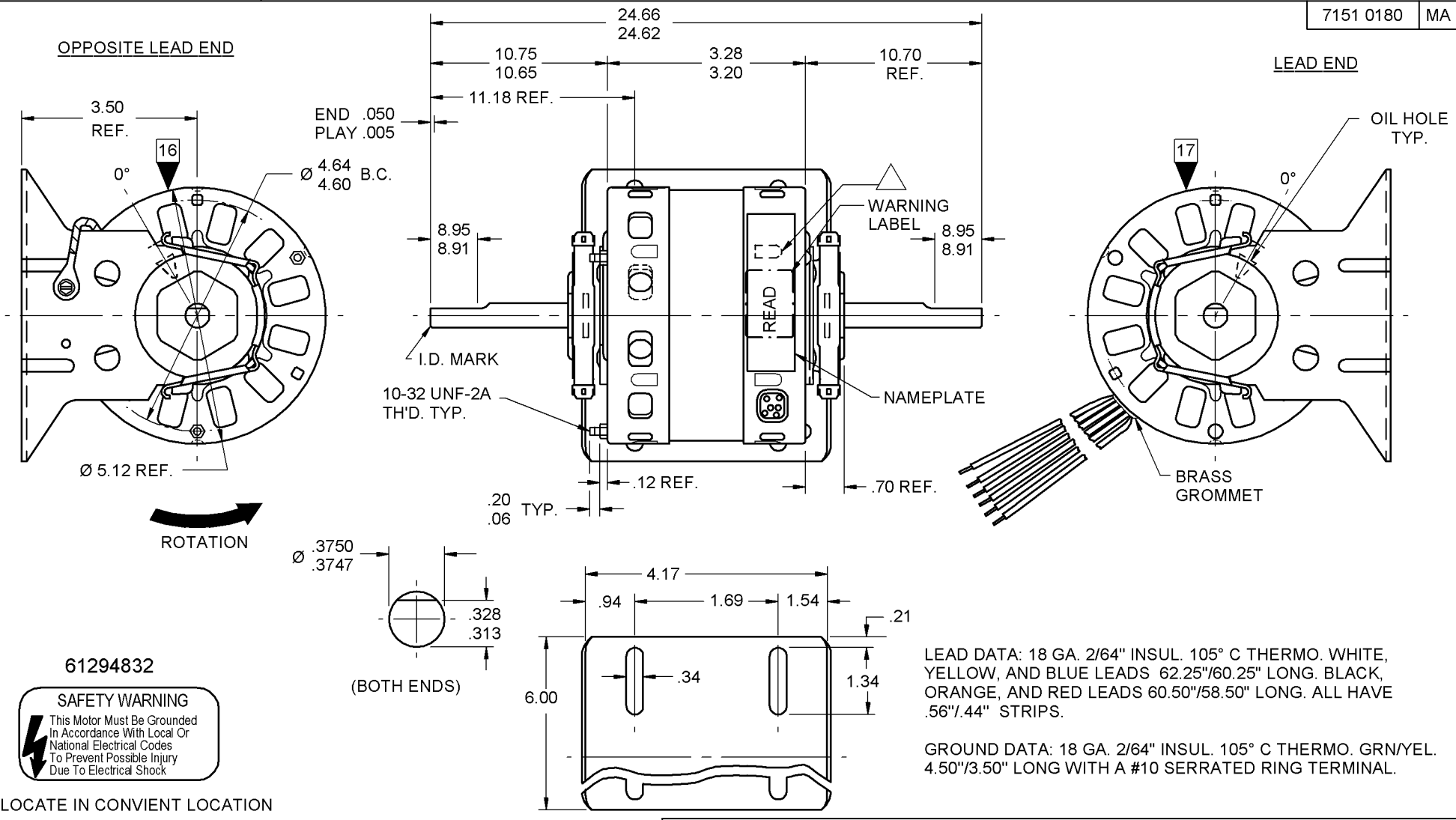
B. SEE DRAWING 8785 6079 SH. 1 FOR PALLET LAYOUT.
C. CENTER LABEL, 6119 0857, ON END OF CARTON.
D. PLACE PAMPHLET, 6122 4579, IN CARTON WITH MOTOR.
E. CARTON LABELS MUST ALL FACE ONE DIRECTION TOWARD THE OPEN END OF THE PALLET. SEE P.S. 88834408.
F. NO PACKAGING TAPE OVER CARTON LABEL.

71xx xxxxZ

If Printed, this is an Uncontrolled Document.

PRODUCTION TEST AT IDLE 115 VOLTS 60 HZ		MOTOR SPEED	PERFORMANCE TEST 115 VOLTS 60 HZ 1 PH 1/10 HP										
AMP	WATT		IDLE				LOADED				LOCKED		BREAK
			RPM	AMP	WATT	OZ/IN	RPM	AMP	WATT	OZ/IN	AMP	WATT	OZ/IN
3.19 — 2.61	191.4 — 156.6	HIGH	1180	2.9	174	94	1050	3.4	259	32	4.4	320	108
1.32 — 1.08	84.7 — 69.3	MED HIGH	1170	1.2	77	30	1050	1.5	109	14	1.8	127	36
.99 — .81	61.6 — 50.4	MED	1170	.9	56	22	1050	1.1	83	11	1.4	95	29
.66 — .54	39.6 — 32.4	MED LOW	1172	.6	36	19	1050	.8	57	8	.9	63	21
.55 — .45	33.0 — 27.0	LOW	1171	.5	30	16	1050	.6	48	7	.8	52	20

HI-POT TEST 2000 VOLTS
MAX LEAKAGE CURRENT 5 mA



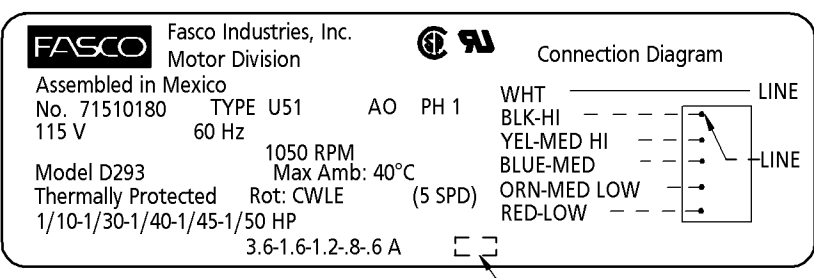
61294832

SAFETY WARNING
This Motor Must Be Grounded In Accordance With Local Or National Electrical Codes To Prevent Possible Injury Due To Electrical Shock

LOCATE IN CONVIENT LOCATION

00464072

00464596



SPECIAL INSTRUCTIONS: SHAFT IS BONDERIZED. FLATS TO BE PARALLEL WITHIN ±20°. ROTATE MOTOR 120° CWLE IN BASE, AS SHOWN. LANCE MUST BE COMPLETELY COVERED BY NAMEPLATE. PAMPHLET PACKED WITH MOTOR.

MOTORS PACKED MAX. PER SKID: _____ PALLET PACK, 60 CARTON PACK, _____ TRAY PACK.	
CUSTOMER: FASCO DISTRIBUTING CO.	PROPRIETARY: DO NOT DUPLICATE OR DISCLOSE TO THIRD PARTIES WITHOUT WRITTEN PERMISSION OF FASCO IND. INC., ELDON MO. FASCO INDUSTRIES, INC. MOTOR DIVISION ELDON PLANT
PART NUMBER: D293	
APPLICATION: DIST. SALES	MOTOR TYPE SHADED POLE
FINISH COLOR: GRAY	MOTOR NUMBER 7151 0180
MOTOR WEIGHT: 7.97 LBS.	REV. 44
ENVIRONMENT: DRY	
INSULATION CLASS: A	

LOCATE NAMEPLATE .05 FROM EDGE OF LEAD END COVER TO READ RIGHT FROM LEAD END OF MOTOR CENTER AT 255° CWLE.

SIZE 3.00 X .90