

NOTES

1. THRU AIR SPACING BETWEEN WIRE AND METAL .094 MIN.
2. TIE BOLT TOLERANCE 7 - 12 IN. LBS.
3. FOR WASHER SET-UP, SEE CHART C600 0279, DETAIL "A".
4. SALES TO SPECIFY ON P.O. WHICH PACK TO USE.

ECO	REV.	DATE	SPEC/CHECK
631882	6	10-7-03	JAK/RWS
638380	7	7-11-08	MKR/MKR
639198	8	3-12-09	MKR/MKR
641549	9	09-13-10	GAE/GAE

A. SEE PACKAGING MANUAL PAGE 2 FOR PACKAGING PROCEDURES.

1 MOTOR/CARTON;
10 MOTORS/LAYER;
5 LAYERS/PALLET;
50 MOTORS/PALLET.

B. SEE DRAWING 8785 6079 SH. 2 FOR PALLET LAYOUT.

C. CENTER LABEL, 6119 6153, ON END OF CARTON.

D. PLACE PAMPHLET, 6122 4579, IN CARTON WITH MOTOR.

71xx xxxx,R

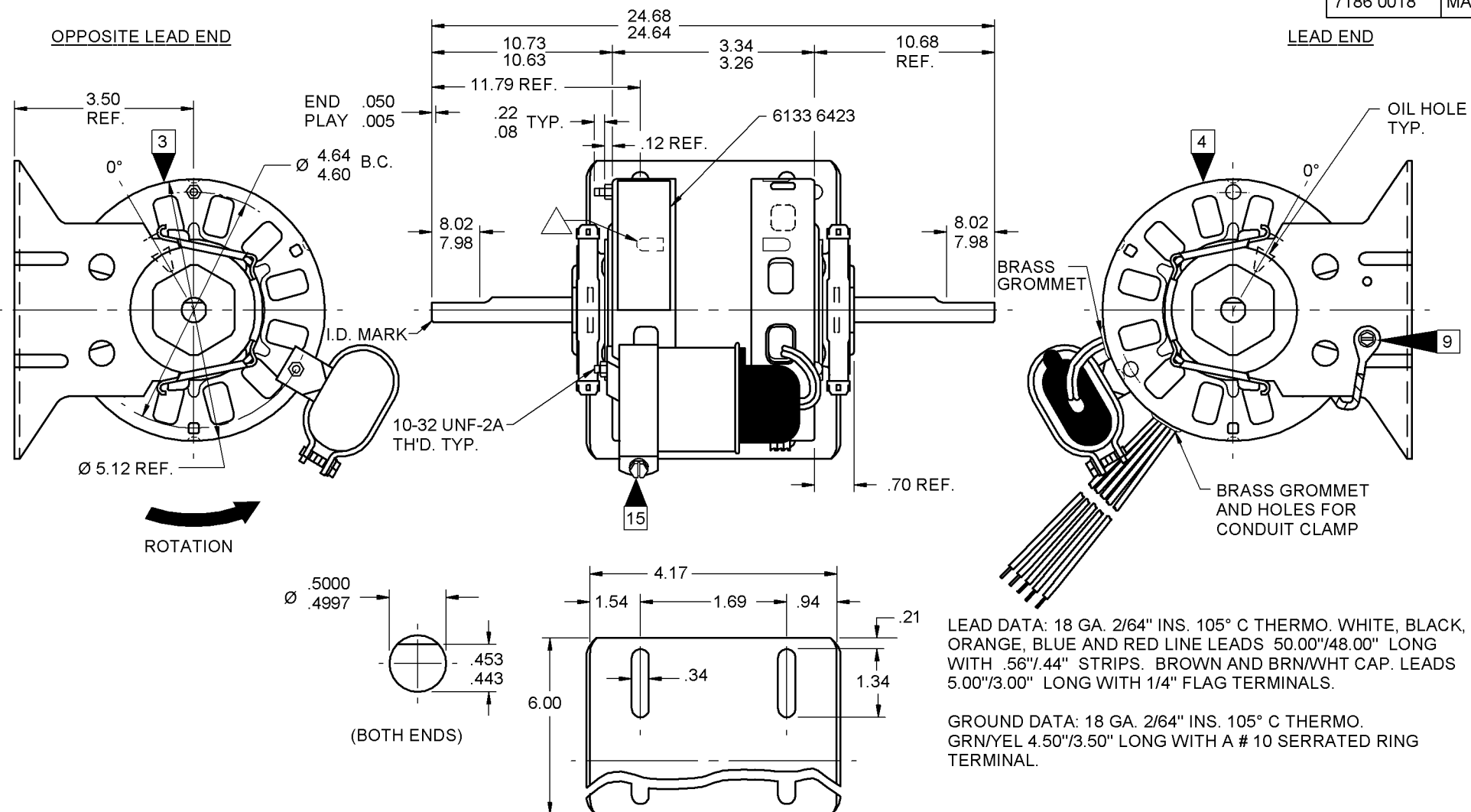
71xx xxxx,C

71xx xxxx,Z

PRODUCTION TEST AT IDLE 230 VOLTS 60 HZ				MOTOR SPEED	PERFORMANCE TEST 230 VOLTS 60 HZ 1 PH 1/10 HP CAP. 4 MFD 370 VAC										
AMP		WATT			IDLE			LOADED				LOCKED			BREAK
				RPM	AMP	WATT	OZ/IN	RPM	AMP	WATT	OZ/IN	AMP	WATT	OZ/IN	
.66	.54	117.7	96.3	HIGH	1193	.60	107	128.0	1050	1.01	228	52.0	1.56	350	154.0
.36	.30	67.1	54.9	MED. HI	1192	.33	61	79.0	1050	.67	147	37.0	1.13	242	107.0
.19	.15	35.2	28.8	MED. LO	1190	.17	32	48.0	1050	.38	79	18.0	.66	127	54.0
.12	.10	23.1	18.9	LO	1185	.11	21	27.0	1050	.25	50	12.0	.45	81	36.0

HI-POT TEST 2000 VOLTS
MAX LEAKAGE CURRENT 5 mA

7186 0018 MA



LEAD DATA: 18 GA. 2/64" INS. 105° C THERMO. WHITE, BLACK, ORANGE, BLUE AND RED LINE LEADS 50.00"/48.00" LONG WITH .56"/.44" STRIPS. BROWN AND BRN/WHT CAP. LEADS 5.00"/3.00" LONG WITH 1/4" FLAG TERMINALS.

GROUND DATA: 18 GA. 2/64" INS. 105° C THERMO. GRN/YEL 4.50"/3.50" LONG WITH A # 10 SERRATED RING TERMINAL.

7186 0018 = MADE IN U.S.A.
7186 0018R = ASSEMBLED IN MEXICO

FASCO FASCO INDUSTRIES, INC. MOTOR DIVISION

V. 208/230 HZ 60 PH 1 INS CL B ROT → MODEL D292
HP 1/10-1/15-1/25-1/35 AO CAP 4 MFD 370 VAC
AMP 1.0-.7-.4-.3 TYPE U186B1 40° C AMB
RPM 1050 (4 SPD) NO. 7186-0018 THERMALLY PROTECTED

SAFETY WARNING
THIS MOTOR MUST BE GROUNDED IN ACCORDANCE WITH LOCAL OR NATIONAL ELECTRICAL CODES TO PREVENT POSSIBLE INJURY DUE TO ELECTRICAL SHOCK

CONNECTION DIAGRAM
BRN — CAPACITOR
BRN/WHT — LINE
WHT-COMM — LINE
BLK-HI — LINE
BLU-M. HI — LINE
ORG-M. LO — LINE
RED-LO — LINE

DATE/BAR CODE AREA PER 8882 6003

SPECIAL INSTRUCTIONS: SHAFT IS BONDERIZED. FLATS TO BE PARALLEL WITHIN ± 20°. ROTATE MOTOR 120° CWLE IN BASE, AS SHOWN. △ LANCE MUST BE COMPLETELY COVERED BY NAMEPLATE. PAMPHLET PACKED WITH MOTOR.

MOTORS PACKED MAX. PER SKID: PALLET PACK, 50 CARTON PACK, TRAY PACK.

CUSTOMER: FASCO DISTRIBUTING CO.

PART NUMBER: D292

APPLICATION: DIST. SALES
FINISH COLOR: GRAY
MOTOR WEIGHT: 9.75 LBS.
ENVIRONMENT: DRY
INSULATION CLASS: B

PROPRIETARY: DO NOT DUPLICATE OR DISCLOSE TO THIRD PARTIES WITHOUT WRITTEN PERMISSION OF FASCO IND. INC., ELDON MO.

FASCO INDUSTRIES, INC. MOTOR DIVISION ELDON PLANT

MOTOR TYPE	MOTOR NUMBER	REV.
P.S.C.	7186 0018	9
B LA FR A S C E B A	R	
00 86 12 V 04 AF 8 8 0		

LOCATE EDGE OF NAMEPLATE .05 FROM EDGE OF OPP. L.E. COVER TO READ RIGHT FROM LEAD END OF MOTOR CENTER AT 280° CWLE.
SIZE 3.50 X 1.00